



Monthly Labour Force Survey Statistics  
May 2018

## CALGARY CMA

<b>Table 282-0135 Labour force survey estimates (LFS), by census metropolitan area based on 2011 census boundaries, 3-month moving average, seasonally adjusted, monthly (persons unless otherwise noted)</b>							
	May2017	April2018	May2018	# Change April 2018 - May2018	% Change April 2018 - May2018	# Change May2017 - May2018	% Change May2017 - May2018
Population (x 1,000)	1,218.1	1,236.6	1,238.9	2.3	0.2%	20.8	1.7%
Labour force (x 1,000)	911.6	915.1	911.5	-3.6	-0.4%	-0.1	0.0%
Employment (x 1,000)	827.0	841.7	841.1	-0.6	-0.1%	14.1	1.7%
Unemployment (x 1,000)	84.6	73.4	70.4	-3.0	-4.1%	-14.2	-16.8%
Unemployment rate (rate)	9.3%	8.0%	7.7%	-0.3%		-1.6%	
Participation rate (rate)	74.8%	74.0%	73.6%	-0.4%		-1.2%	
Employment rate (rate)	67.9%	68.1%	67.9%	-0.2%		0.0%	

## CALGARY CMA

<b>Table 282-0128 Labour force survey estimates (LFS), by census metropolitan area based on 2011 census boundaries, 3-month moving average, unadjusted for seasonality, monthly (persons unless otherwise noted)</b>							
	May2017	April2018	May2018	# Change April 2018 - May 2018	% Change April 2018 - May 2018	# Change May 2017 - May 2018	% Change May 2017 - May 2018
Population (x 1,000)	1,218.1	1,236.6	1,238.9	2.3	0.2%	20.8	1.7%
Labour force (x 1,000)	908.4	905.8	907.4	1.6	0.2%	-1.0	-0.1%
Employment (x 1,000)	823.4	836.3	840.1	3.8	0.5%	16.7	2.0%
Full-time employment (x 1,000)	669.6	684.9	691.0	6.1	0.9%	21.4	3.2%
Part-time employment (x 1,000)	153.8	151.4	149.1	-2.3	-1.5%	-4.7	-3.1%
Unemployment (x 1,000)	85.1	69.5	67.3	-2.2	-3.2%	-17.8	-20.9%
Not in labour force (x 1,000)	309.7	330.8	331.5	0.7	0.2%	21.8	7.0%
Unemployment rate (rate)	9.4%	7.7%	7.4%	-0.3%		-2.0%	
Participation rate (rate)	74.6%	73.2%	73.2%	0.0%		-1.4%	
Employment rate (rate)	67.6%	67.6%	67.8%	0.2%		0.2%	

## CALGARY CMA

**Table 282-0130 Labour force survey estimates (LFS), employment by census metropolitan area based on 2011 census boundaries and North American Industry Classification System (NAICS), 3-month moving average, unadjusted for seasonality, monthly (persons x 1,000)**

	May2017	April 2018	May2018	# Change April 2018 - May2018	% Change April 2018 - May2018	# Change May2017 - May2018	% Change May2017 - May2018
Total Employed - All Industries	823.4	836.3	840.1	3.8	0.5%	16.7	2.0%
Goods-Producing Sector	165.6	185.9	189.4	3.5	1.9%	23.8	14.4%
Agriculture	2.5	3.4	3.7	0.3	8.8%	1.2	48.0%
Forestry, Fishing, Mining, Quarrying, Oil and Gas	43.2	48.4	49.0	0.6	1.2%	5.8	13.4%
Utilities	9.8	9.6	9.8	0.2	2.1%	0.0	0.0%
Construction	70.4	78.4	81.4	3.0	3.8%	11.0	15.6%
Manufacturing	39.7	46.1	45.6	-0.5	-1.1%	5.9	14.9%
Services-Producing Sector	657.8	650.5	650.7	0.2	0.0%	-7.1	-1.1%
Wholesale & Retail Trade	120.5	120.8	119.1	-1.7	-1.4%	-1.4	-1.2%
Transportation and Warehousing	58.8	54.1	54.1	0.0	0.0%	-4.7	-8.0%
Finance, Insurance, Real Estate and Leasing	47.5	43.4	42.7	-0.7	-1.6%	-4.8	-10.1%
Professional, Scientific and Technical Services	91.1	92.0	95.0	3.0	3.3%	3.9	4.3%
Business, Building and Other Support Services	26.8	33.6	32.9	-0.7	-2.1%	6.1	22.8%
Educational Services	54.9	52.5	51.2	-1.3	-2.5%	-3.7	-6.7%
Health Care and Social Assistance	100.4	97.7	97.4	-0.3	-0.3%	-3.0	-3.0%
Information, Culture and Recreation	34.7	33.1	34.3	1.2	3.6%	-0.4	-1.2%
Accommodation and Food Services	55.6	56.1	56.7	0.6	1.1%	1.1	2.0%
Other Services	37.7	38.6	38.6	0.0	0.0%	0.9	2.4%
Public Administration	29.7	28.5	28.8	0.3	1.1%	-0.9	-3.0%

## Province of Alberta

**Table 282-0087 Labour force survey estimates (LFS), by sex and age group, seasonally adjusted, monthly (persons unless otherwise noted)**

	May2017	April 2018	May2018	# Change April 2018 - May2018	% Change April 2018 - May2018	# Change May2017 - May2018	% Change May2017 - May2018
Population (x 1,000)	3,425.5	3,459.1	3,463.4	4.3	0.1%	37.9	1.1%
Labour force (x 1,000)	2,482.5	2,489.2	2,481.1	-8.1	-0.33%	-1.4	-0.1%
Employment (x 1,000)	2,288.9	2,323.3	2,326.2	2.9	0.1%	37.3	1.6%
Employment full-time (x 1,000)	1,880.9	1,915.7	1,918.9	3.2	0.2%	38.0	2.0%
Employment part-time (x 1,000)	408.1	407.6	407.4	-0.2	0.0%	-0.7	-0.2%
Unemployment (x 1,000)	193.5	165.9	154.9	-11.0	-6.6%	-38.6	-19.9%
Unemployment rate (rate)	7.8%	6.7%	6.2%	-0.5%		-1.6%	
Participation rate (rate)	72.5%	72.0%	71.6%	-0.4%		-0.9%	
Employment rate (rate)	66.8%	67.2%	67.2%	0.0%		0.4%	

## Province of Alberta

**Table 282-0088 Labour force survey estimates (LFS), employment by North American Industry Classification System (NAICS), seasonally adjusted, monthly (persons x 1,000)**

	May2017	April 2018	May2018	# Change April 2018 - May2018	% Change April 2018 - May2018	# Change May2017 - May2018	% Change May2017 - May2018
Total Employed - All Industries	2,288.9	2,323.3	2,326.2	2.9	0.1%	37.3	1.6%
Goods-Producing Sector	579.7	607.8	608.0	0.2	0.0%	28.3	4.9%
Agriculture	52.9	54.1	49.3	-4.8	-8.9%	-3.6	-6.8%
Forestry, Fishing, Mining, Quarrying, Oil and Gas	146.3	152.7	155.6	2.9	1.9%	9.3	6.4%
Utilities	21.8	22.7	23.9	1.2	5.3%	2.1	9.6%
Construction	236.6	243.9	248.1	4.2	1.7%	11.5	4.9%
Manufacturing	122.1	134.4	131.3	-3.1	-2.3%	9.2	7.5%
Services-Producing Sector	1,709.3	1,715.5	1,718.2	2.7	0.2%	8.9	0.5%
Wholesale & Retail Trade	332.5	329.7	331.2	1.5	0.5%	-1.3	-0.4%
Transportation and Warehousing	141.0	138.0	138.4	0.4	0.3%	-2.6	-1.8%
Finance, Insurance, Real Estate and Leasing	108.5	108.1	105.0	-3.1	-2.9%	-3.5	-3.2%
Professional, Scientific and Technical Services	176.6	182.0	181.2	-0.8	-0.4%	4.6	2.6%
Business, Building and Other Support Services	78.9	82.1	80.1	-2.0	-2.4%	1.2	1.5%
Educational Services	155.2	159.2	164.5	5.3	3.3%	9.3	6.0%
Health Care and Social Assistance	274.7	275.2	275.0	-0.2	-0.1%	0.3	0.1%
Information, Culture and Recreation	73.8	76.2	79.8	3.6	4.7%	6.0	8.1%
Accommodation and Food Services	149.4	145.9	147.0	1.1	0.8%	-2.4	-1.6%
Other Services	118.4	111.6	107.9	-3.7	-3.3%	-10.5	-8.9%
Public Administration	100.3	107.4	108.3	0.9	0.8%	8.0	8.0%

## CANADA

**Table 282-0087 Labour force survey estimates (LFS), by sex and age group, seasonally adjusted, monthly (persons unless otherwise noted)**

	May2017	April 2018	May2018	# Change April 2018 - May2018	% Change April 2018 - May2018	# Change May2017 - May2018	% Change May2017 - May2018
Population (x 1,000)	29,857.1	30,198.1	30,233.8	35.7	0.1%	376.7	1.3%
Labour force (x 1,000)	19,643.7	19,758.7	19,747.8	-10.9	-0.06%	104.1	0.5%
Employment (x 1,000)	18,358.0	18,603.7	18,596.2	-7.5	-0.040%	238.2	1.3%
Employment full-time (x 1,000)	14,860.8	15,181.5	15,150.5	-31.0	-0.2%	289.7	1.9%
Employment part-time (x 1,000)	3,497.3	3,422.2	3,445.8	23.6	0.7%	-51.5	-1.5%
Unemployment (x 1,000)	1,285.7	1,155.0	1,151.6	-3.4	-0.3%	-134.1	-10.4%
Unemployment rate (rate)	6.5%	5.8%	5.8%	0.0%		-0.7%	
Participation rate (rate)	65.8%	65.4%	65.3%	-0.1%		-0.5%	
Employment rate (rate)	61.5%	61.6%	61.5%	-0.1%		0.0%	

## CANADA

**Table 282-0088 Labour force survey estimates (LFS), employment by North American Industry Classification System (NAICS), seasonally adjusted, monthly (persons x 1,000)**

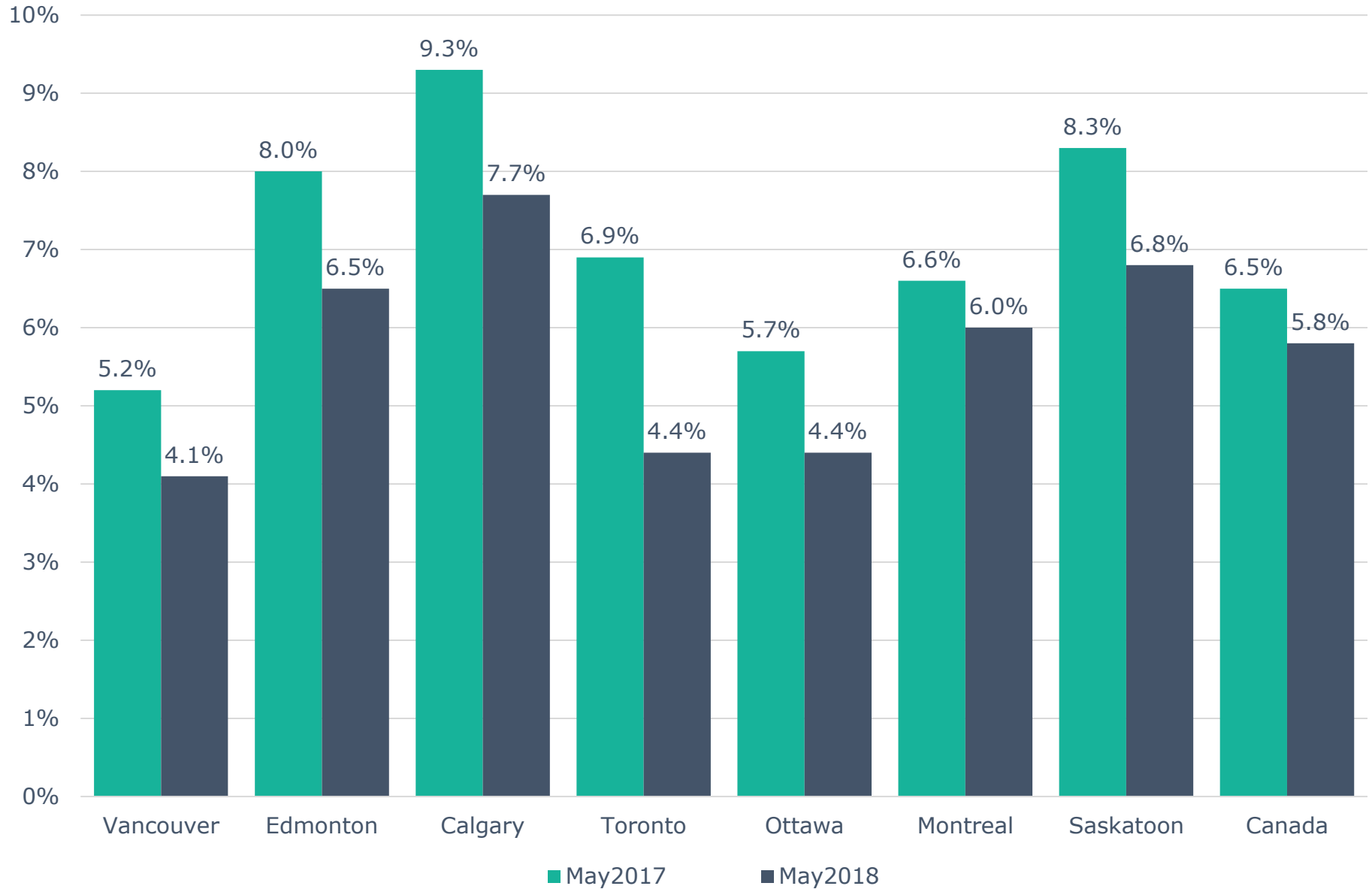
	May2017	April 2018	May2018	# Change April 2018 - May2018	% Change April 2018 - May2018	# Change May2017 - May2018	% Change May2017 - May2018
Total Employed - All Industries	18,358.0	18,603.7	18,596.2	-7.5	0.0%	238.2	1.3%
Goods-Producing Sector	3,860.1	3,938.5	3,909.5	-29.0	-0.7%	49.4	1.3%
Agriculture	277.1	282.6	282.3	-0.3	-0.1%	5.2	1.9%
Forestry, Fishing, Mining, Quarrying, Oil and Gas	329.9	337.5	337.4	-0.1	0.0%	7.5	2.3%
Utilities	131.9	140.5	143.2	2.7	1.9%	11.3	8.6%
Construction	1,396.9	1,433.3	1,420.3	-13.0	-0.9%	23.4	1.7%
Manufacturing	1,724.2	1,744.6	1,726.3	-18.3	-1.0%	2.1	0.1%
Services-Producing Sector	14,498.0	14,665.2	14,686.7	21.5	0.1%	188.7	1.3%
Trade	2,805.8	2,789.9	2,793.0	3.1	0.1%	-12.8	-0.5%
Transportation and Warehousing	944.6	974.3	986.7	12.4	1.3%	42.1	4.5%
Finance, Insurance, Real Estate and Leasing	1,159.8	1,164.3	1,176.2	11.9	1.0%	16.4	1.4%
Professional, Scientific and Technical Services	1,446.2	1,460.0	1,477.0	17.0	1.2%	30.8	2.1%
Business, Building and Other Support Services	758.6	766.8	759.1	-7.7	-1.0%	0.5	0.1%
Educational Services	1,285.3	1,306.2	1,309.0	2.8	0.2%	23.7	1.8%
Health Care and Social Assistance	2,387.6	2,398.3	2,373.9	-24.4	-1.0%	-13.7	-0.6%
Information, Culture and Recreation	772.4	783.5	785.5	2.0	0.3%	13.1	1.7%
Accommodation and Food Services	1,202.8	1,241.4	1,259.0	17.6	1.4%	56.2	4.7%
Other Services	778.8	807.4	795.2	-12.2	-1.5%	16.4	2.1%
Public Administration	956.2	973.0	972.0	-1.0	-0.1%	15.8	1.7%

**Unemployment Rates for Key Markets**

	<b>May2017</b>	<b>April 2018</b>	<b>May2018</b>
<b>Calgary</b>	9.3%	8.0%	7.7%
<b>Alberta</b>	7.8%	6.7%	6.2%
<b>Canada</b>	6.5%	5.8%	5.8%
<b>Montreal</b>	6.6%	6.1%	6.0%
<b>Ottawa</b>	5.7%	4.4%	4.4%
<b>Toronto</b>	6.9%	4.4%	4.4%
<b>Edmonton</b>	8.0%	6.6%	6.5%
<b>Vancouver</b>	5.2%	4.1%	4.1%
<b>Winnipeg</b>	5.8%	6.5%	6.7%
<b>Regina</b>	4.7%	5.7%	6.3%
<b>Saskatoon</b>	8.3%	6.7%	6.8%
<b>Wood Buffalo</b>	8.3%	6.0%	6.4%

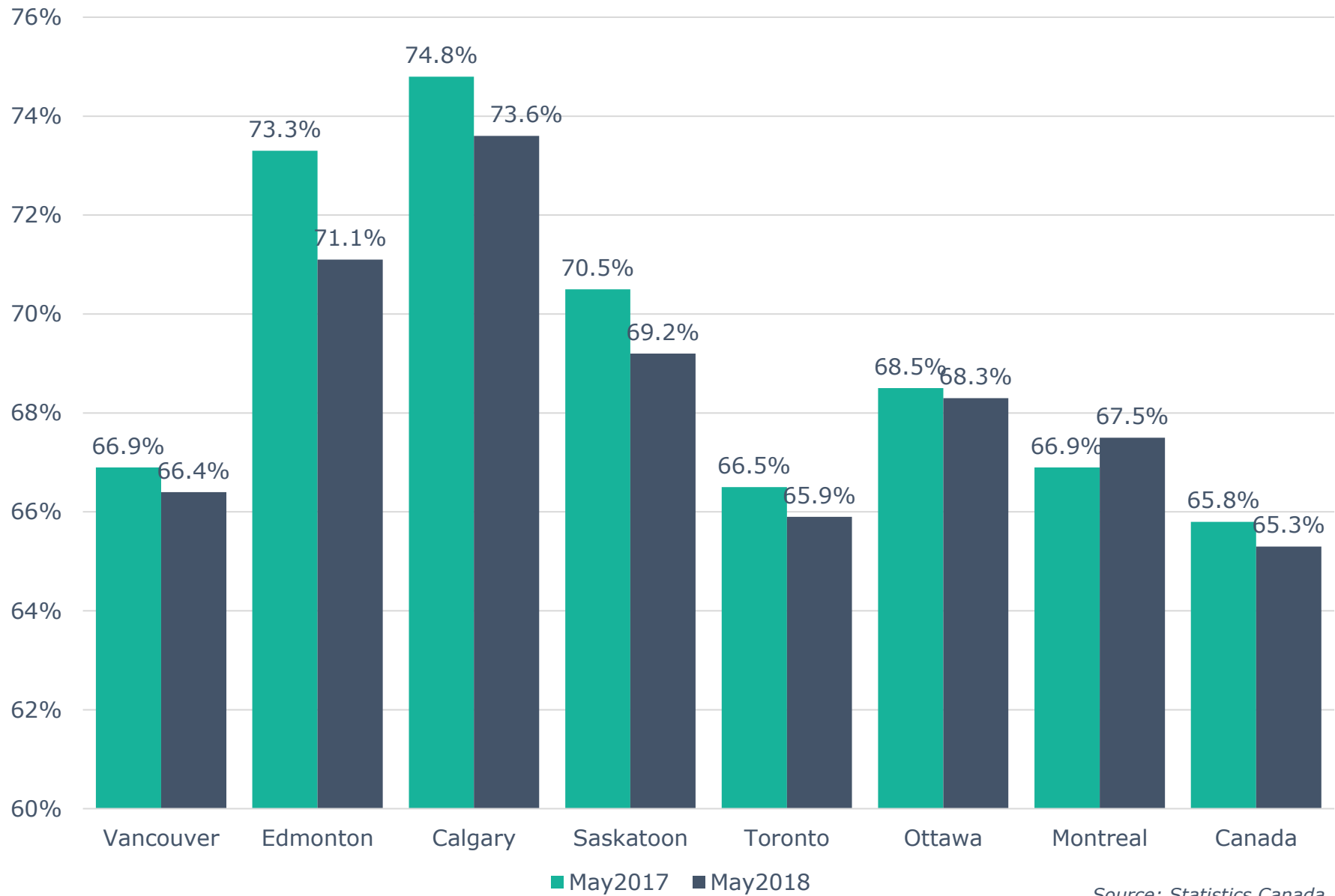


# Unemployment Rate Across Canada



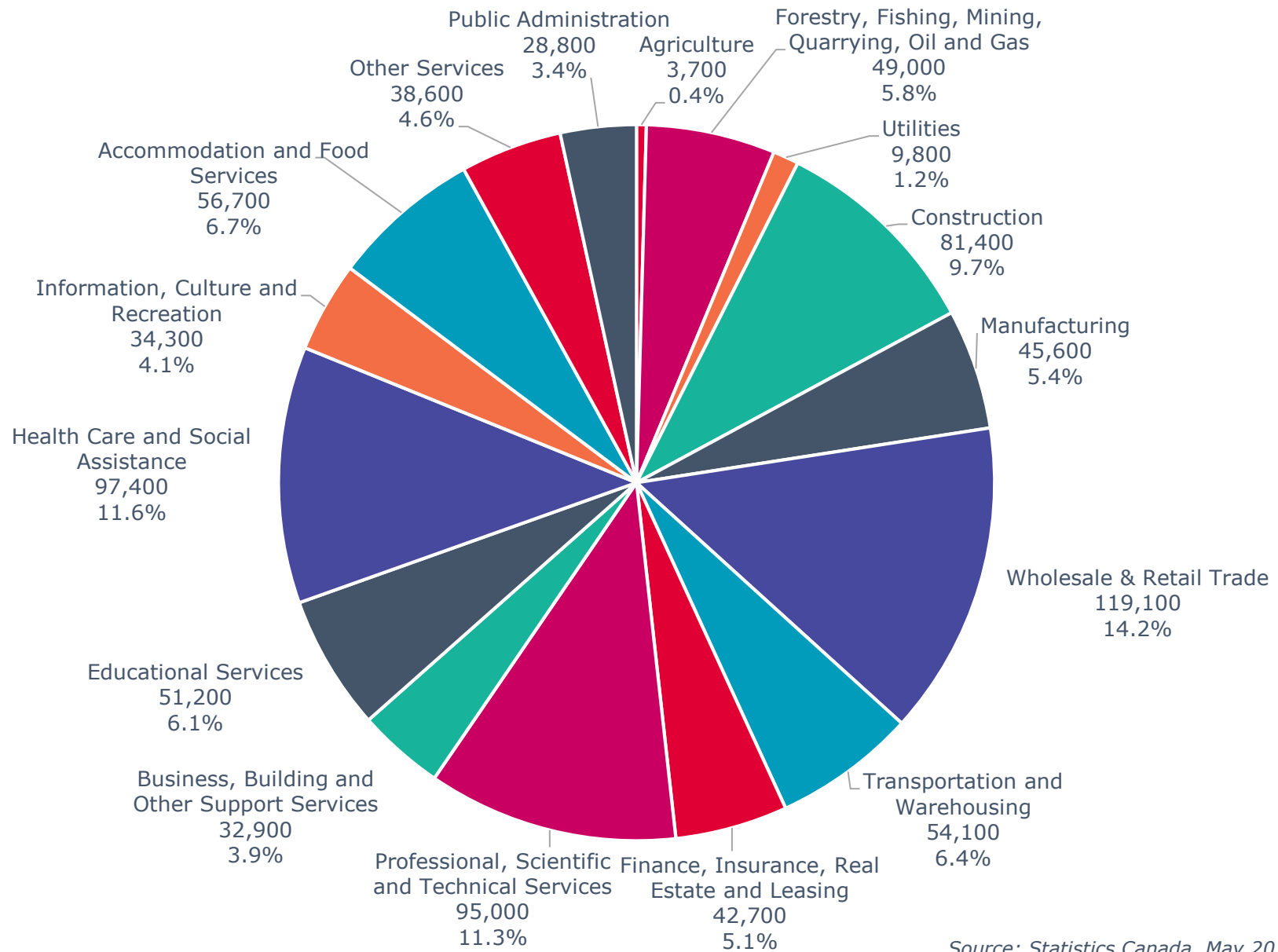
Source: Statistics Canada

# Labour Force Participation Rate Across Canada



Source: Statistics Canada

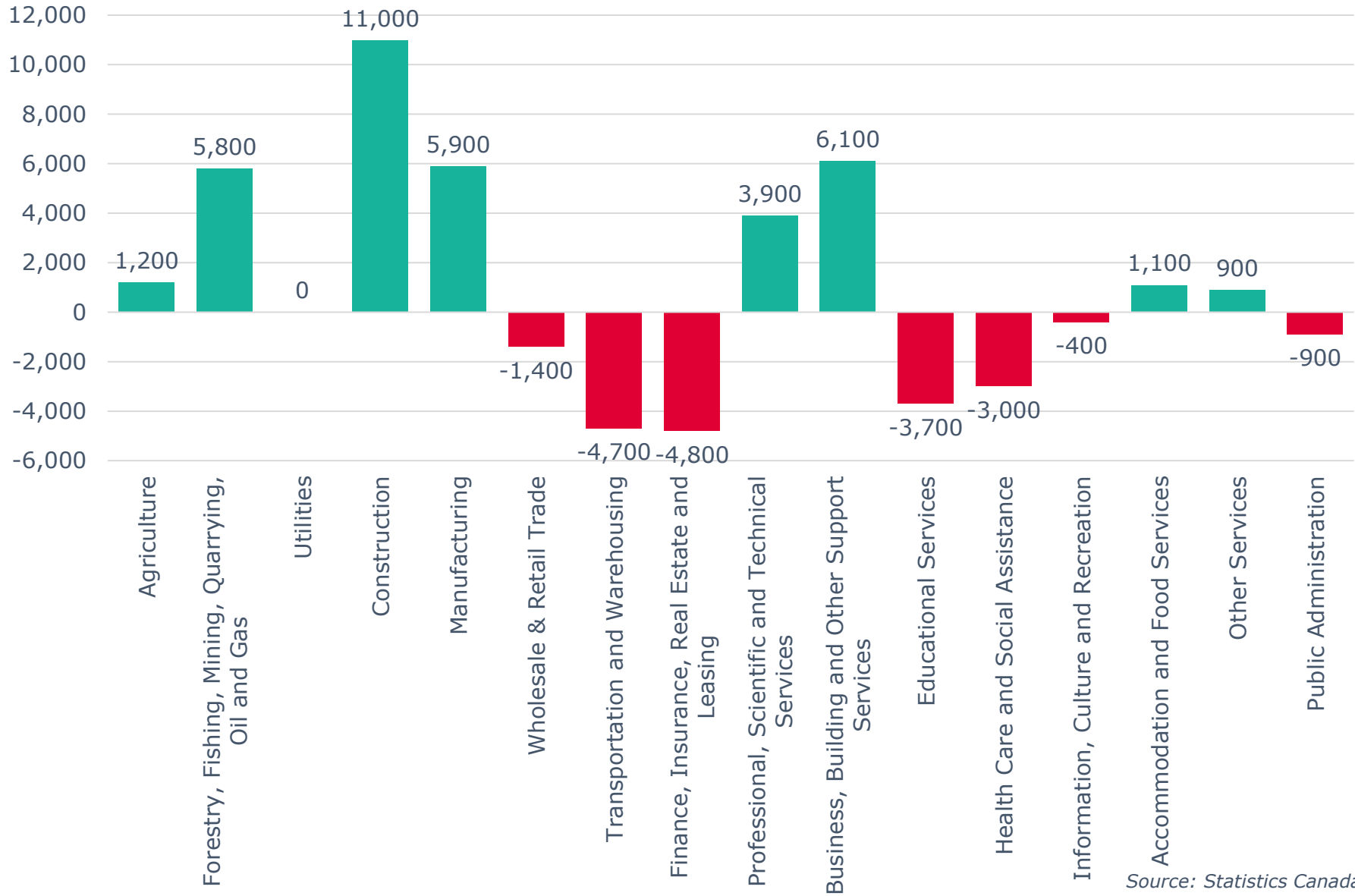
# Calgary CMA Employment by Industry (841,100)



Source: Statistics Canada, May 2018

# Calgary CMA 12-Month Net Jobs Gained or Lost by Industry

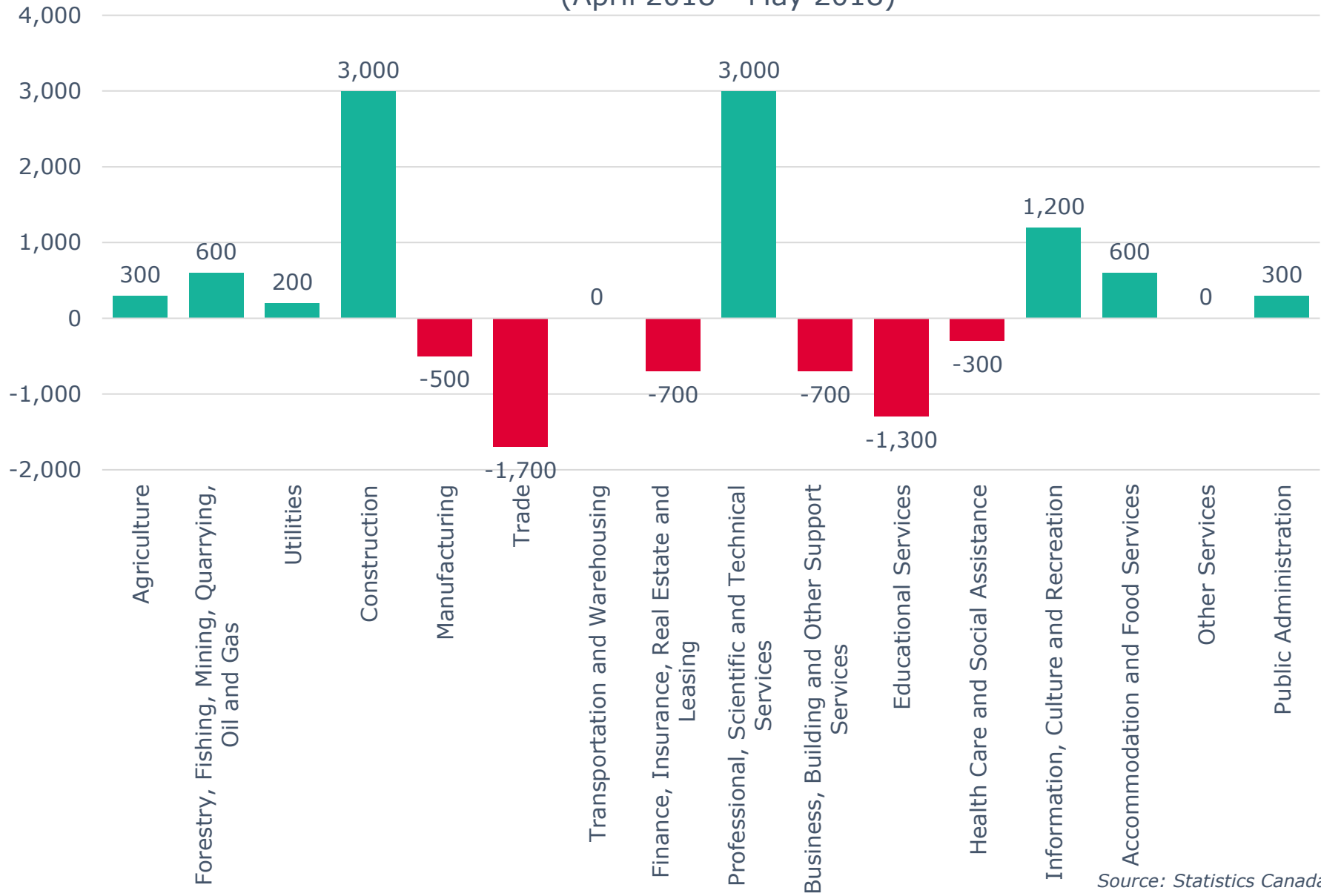
(May 2018)



Source: Statistics Canada

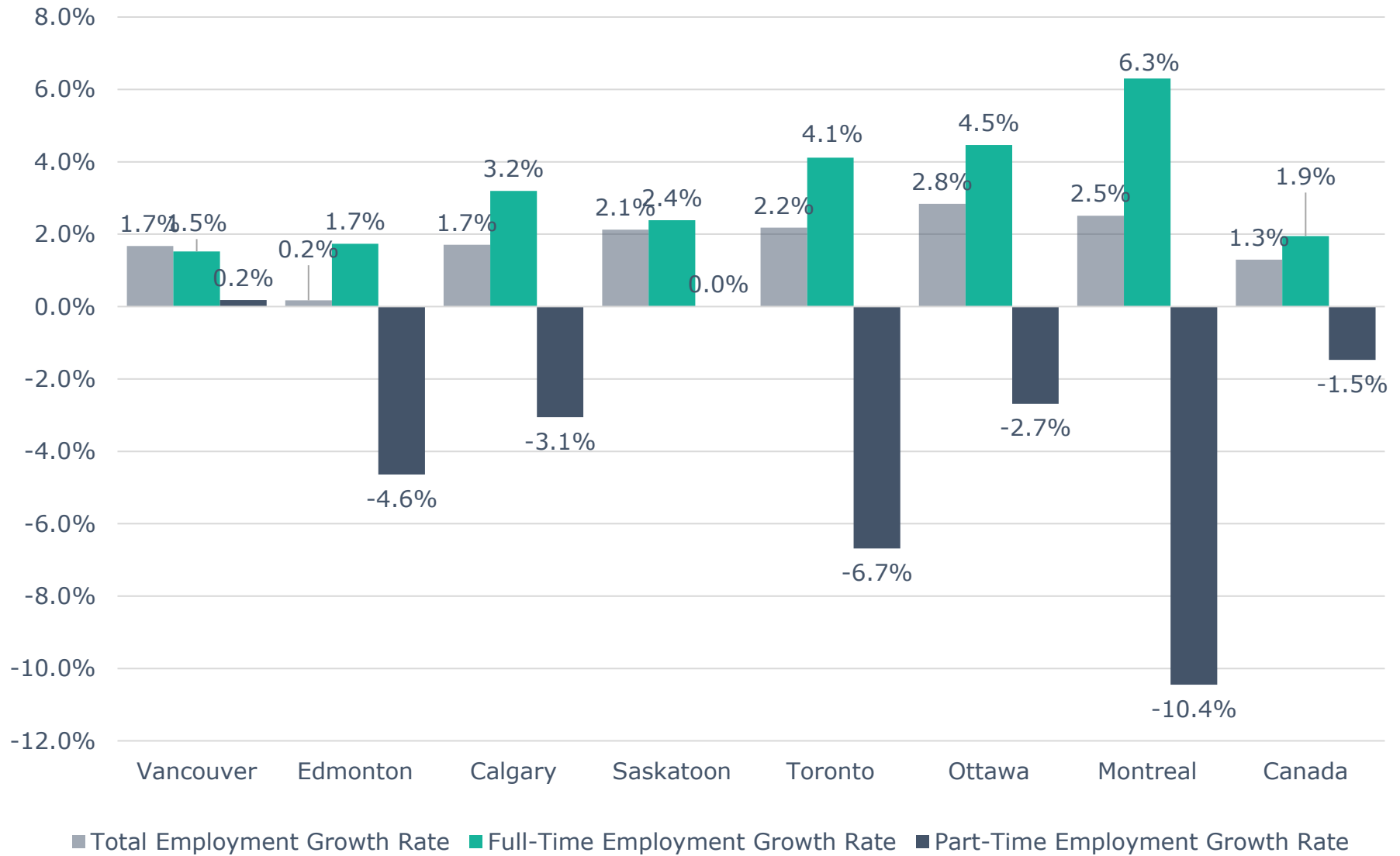
# Calgary CMA Monthly Net Jobs Gained or Lost by Industry

(April 2018 - May 2018)



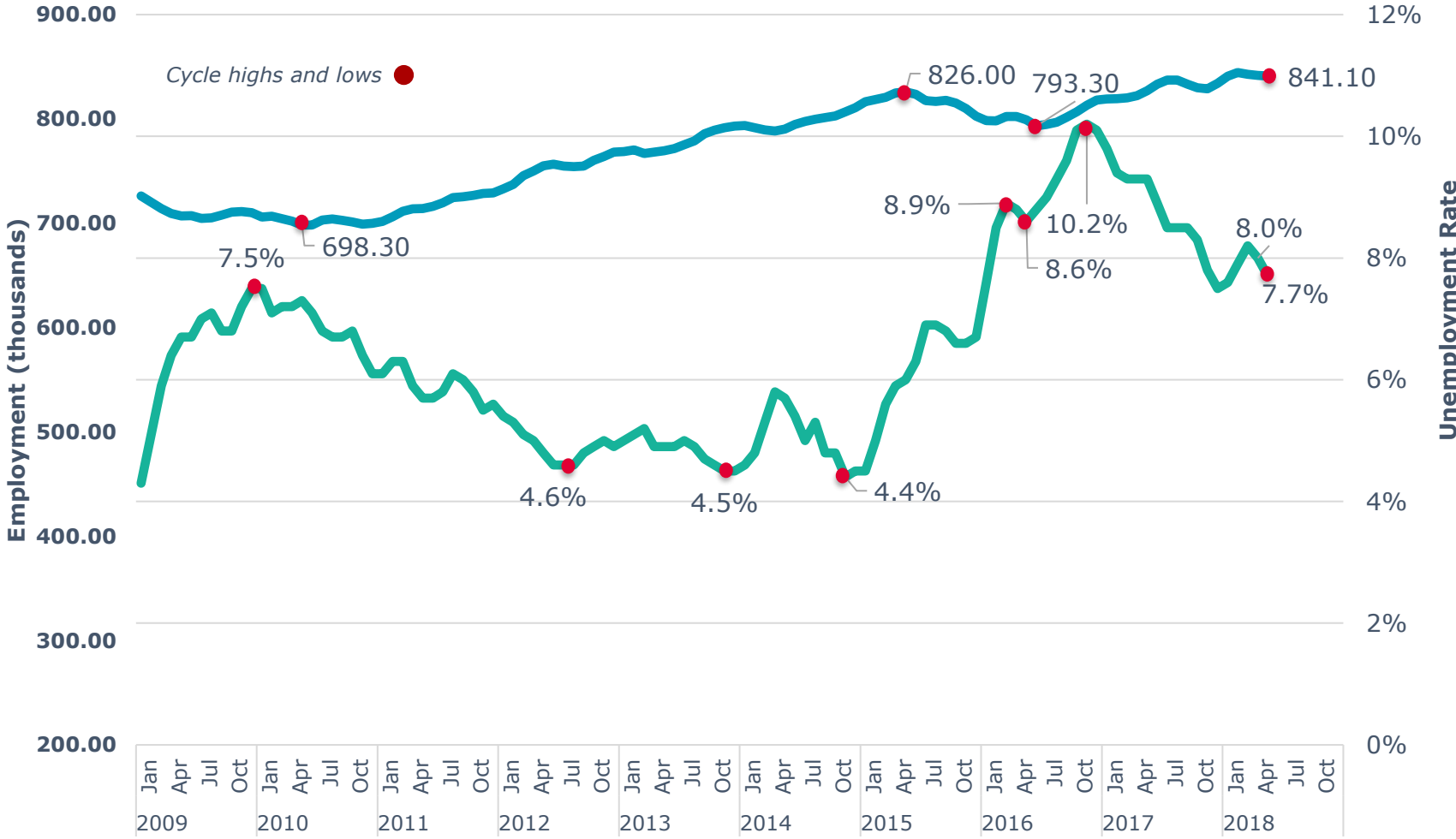
Source: Statistics Canada

# Annual Employment Growth



Source: Statistics Canada, May 2017 - May 2018

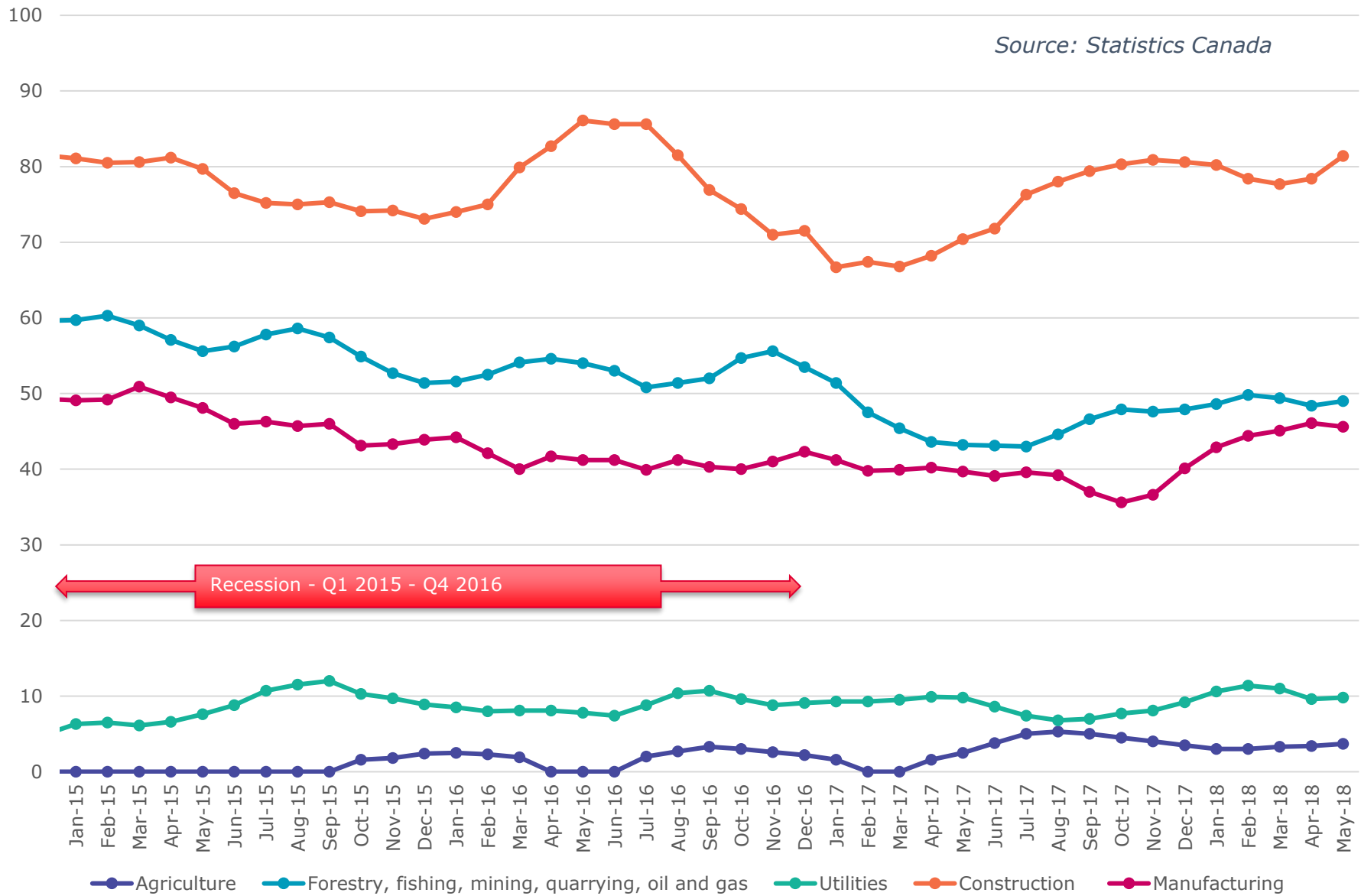
# Calgary CMA Historical Unemployment Rate & Level of Employment



Source: Statistics Canada

## Calgary CMA Goods Producing Sectors - Number of Employees (In thousands)

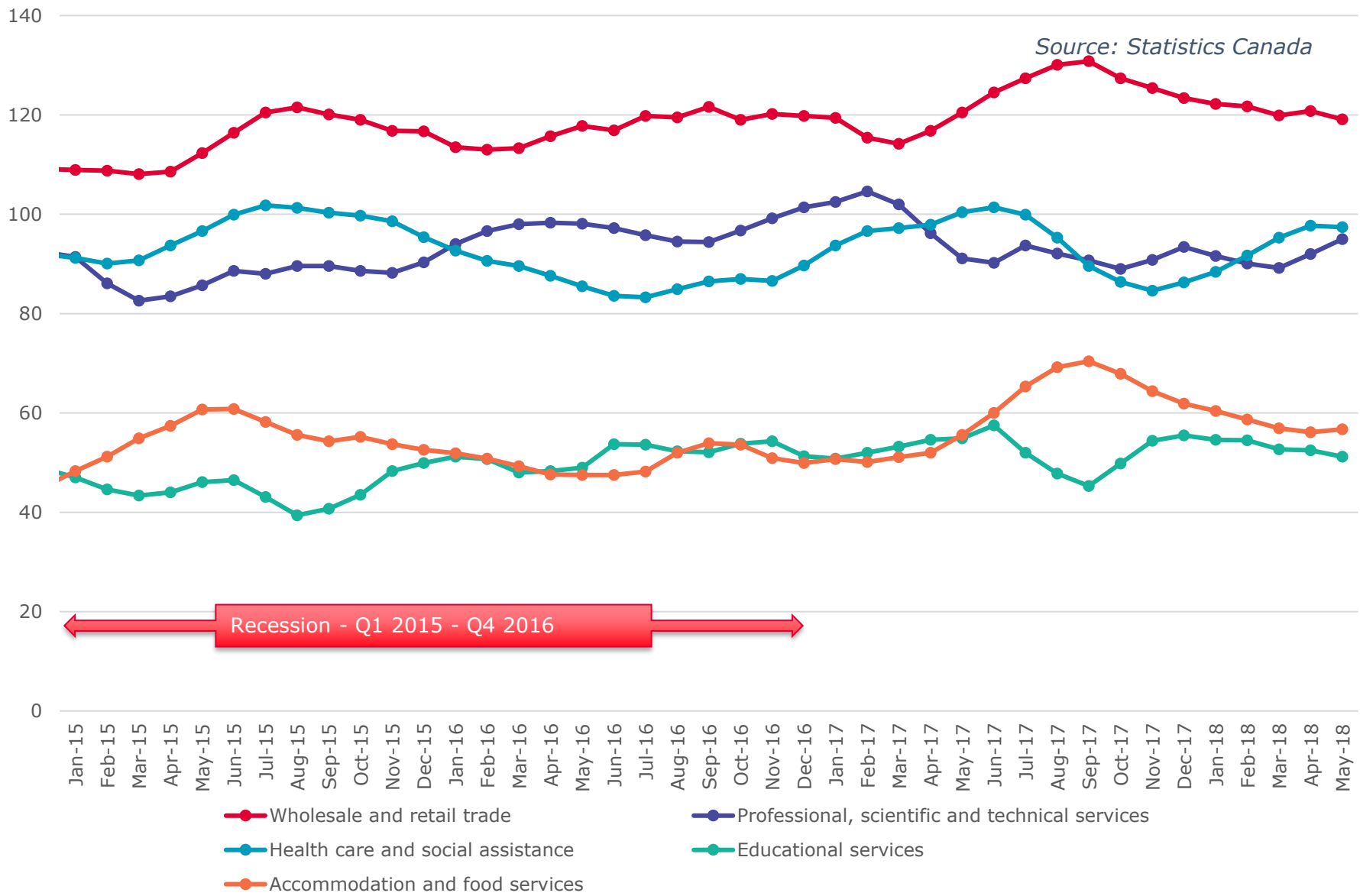
*Source: Statistics Canada*





## Calgary CMA Largest 5 Services Sector by Number of Employees (In thousands)

*Source: Statistics Canada*



### Calgary CMA Smallest 6 Service Sectors by Number of Employees (In thousands)

