



Labour Force Survey Statistics March 2020

CALGARY CMA

Table 14-10-0294-02 (282-0135) Labour force survey estimates (LFS), by census metropolitan area based on 2011 census boundaries, 3-month moving average, seasonally adjusted, monthly (persons unless otherwise noted)

	March 2019	February 2020	March 2020	# Change February 2020 - March 2020	% Change February 2020 - March 2020	# Change March 2019 - March 2020	% Change March 2019 - March 2020
Population (x 1,000)	1,261.8	1,290.4	1,292.8	2.4	0.2%	31.0	2.5%
Labour force (x 1,000)	926.1	920.3	914.1	-6.2	-0.7%	-12.0	-1.3%
Employment (x 1,000)	854.7	852.2	835.1	-17.1	-2.0%	-19.6	-2.3%
Unemployment (x 1,000)	71.4	68.1	79.0	10.9	16.0%	7.6	10.6%
Unemployment rate (rate)	7.7%	7.4%	8.6%	1.2%		0.9%	
Participation rate (rate)	73.4%	71.3%	70.7%	-0.6%		-2.7%	
Employment rate (rate)	67.7%	66.0%	64.6%	-1.4%		-3.1%	

CALGARY CMA

Table 14-10-0095-01 (282-0128) Labour force survey estimates (LFS), by census metropolitan area based on 2011 census boundaries, 3-month moving average, unadjusted for seasonality, monthly (persons unless otherwise noted)

	March 2019	February 2020	March 2020	# Change February 2020 - March 2020	% Change February 2020 - March 2020	# Change March 2019 - March 2020	% Change March 2019 - March 2020
Population (x 1,000)	1,261.8	1,290.4	1,292.8	2.4	0.2%	31.0	2.5%
Labour force (x 1,000)	921.0	912.6	905.0	-7.6	-0.8%	-16.0	-1.7%
Employment (x 1,000)	850.7	845.3	824.1	-21.2	-2.5%	-26.6	-3.1%
Full-time employment (x 1,000)	685.3	681.5	677.0	-4.5	-0.7%	-8.3	-1.2%
Part-time employment (x 1,000)	165.4	163.7	147.1	-16.6	-10.1%	-18.3	-11.1%
Unemployment (x 1,000)	70.3	67.3	80.9	13.6	20.2%	10.6	15.1%
Not in labour force (x 1,000)	340.8	377.8	387.8	10.0	2.6%	47.0	13.8%
Unemployment rate (rate)	7.6%	7.4%	8.9%	1.5%		1.3%	
Participation rate (rate)	73.0%	70.7%	70.0%	-0.7%		-3.0%	
Employment rate (rate)	67.4%	65.5%	63.7%	-1.8%		-3.7%	

CALGARY CMA

Table: 14-10-0097-01 (282-0130) Labour force survey estimates (LFS), employment by census metropolitan area based on 2011 census boundaries and North American Industry Classification System (NAICS), 3-month moving average, unadjusted for seasonality, monthly (persons x 1,000)

	March 2019	February 2020	March 2020	# Change February 2020 - March 2020	% Change February 2020 March 2020	# Change March 2019 - March 2020	% Change March 2019 - March 2020
Total Employed - All Industries	850.7	845.3	824.1	-21.2	-2.5%	-26.6	-3.1%
Goods-Producing Sector	188.8	166.2	167.6	1.4	0.8%	-21.2	-11.2%
Agriculture	3.7	2.8	2.6	-0.2	-7.1%	-1.1	-29.7%
Forestry, Fishing, Mining, Quarrying, Oil and Gas	58.9	51.4	51.2	-0.2	-0.4%	-7.7	-13.1%
Utilities	8.9	8.8	9.0	0.2	2.3%	0.1	1.1%
Construction	67.0	68.2	67.6	-0.6	-0.9%	0.6	0.9%
Manufacturing	50.3	35.1	37.2	2.1	6.0%	-13.1	-26.0%
Services-Producing Sector	661.9	679.1	656.5	-22.6	-3.3%	-5.4	-0.8%
Wholesale & Retail Trade	119.9	111.0	108.8	-2.2	-2.0%	-11.1	-9.3%
Transportation and Warehousing	52.5	58.5	54.5	-4.0	-6.8%	2.0	3.8%
Finance, Insurance, Real Estate and Leasing	43.5	40.6	40.6	0.0	0.0%	-2.9	-6.7%
Professional, Scientific and Technical Services	94.2	100.3	93.8	-6.5	-6.5%	-0.4	-0.4%
Business, Building and Other Support Services	37.5	28.1	27.7	-0.4	-1.4%	-9.8	-26.1%
Educational Services	49.1	67.9	66.6	-1.3	-1.9%	17.5	35.6%
Health Care and Social Assistance	100.2	119.1	117.8	-1.3	-1.1%	17.6	17.6%
Information, Culture and Recreation	36.5	32.2	30.6	-1.6	-5.0%	-5.9	-16.2%
Accommodation and Food Services	57.1	59.3	53.2	-6.1	-10.3%	-3.9	-6.8%
Other Services	41.2	34.1	34.9	0.8	2.3%	-6.3	-15.3%
Public Administration	30.4	27.9	27.8	-0.1	-0.4%	-2.6	-8.6%

Province of Alberta

Table: 14-10-0287-01 (282-0087) Labour force survey estimates (LFS), by sex and age group, seasonally adjusted, monthly (persons unless otherwise noted)

	March 2019	February 2020	March 2020	# Change February 2020 - March 2020	% Change February 2020 - March 2020	# Change March 2019 - March 2020	% Change March 2019 - March 2020
Population (x 1,000)	3,505.3	3,561.4	3,566.7	5.3	0.1%	61.4	1.8%
Labour force (x 1,000)	2,500.5	2,510.2	2,423.3	-86.9	-3.46%	-77.2	-3.1%
Employment (x 1,000)	2,328.4	2,329.9	2,212.8	-117.1	-5.0%	-115.6	-5.0%
Employment full-time (x 1,000)	1,924.4	1,898.3	1,854.8	-43.5	-2.3%	-69.6	-3.6%
Employment part-time (x 1,000)	404.0	431.6	358.0	-73.6	-17.1%	-46.0	-11.4%
Unemployment (x 1,000)	172.1	180.3	210.5	30.2	16.7%	38.4	22.3%
Unemployment rate (rate)	6.9%	7.2%	8.7%	1.5%		1.8%	
Participation rate (rate)	71.3%	70.5%	67.9%	-2.6%		-3.4%	
Employment rate (rate)	66.4%	65.4%	62.0%	-3.4%		-4.4%	

Province of Alberta

Table: 14-10-0355-01 (282-0088) Labour force survey estimates (LFS), employment by North American Industry Classification System (NAICS), seasonally adjusted, monthly (persons x 1,000)

	March 2019	February 2020	March 2020	# Change February 2020 - March 2020	% Change February 2020 - March 2020	# Change March 2019 - March 2020	% Change March 2019 - March 2020
Total Employed - All Industries	2,328.4	2,329.9	2,212.8	-117.1	-5.0%	-115.6	-5.0%
Goods-Producing Sector	592.0	571.3	583.7	12.4	2.2%	-8.3	-1.4%
Agriculture	45.8	49.8	48.8	-1.0	-2.0%	3.0	6.6%
Forestry, Fishing, Mining, Quarrying, Oil and Gas	152.0	136.0	144.7	8.7	6.4%	-7.3	-4.8%
Utilities	22.8	22.4	23.4	1.0	4.5%	0.6	2.6%
Construction	235.8	225.4	230.7	5.3	2.4%	-5.1	-2.2%
Manufacturing	135.7	137.6	136.2	-1.4	-1.0%	0.5	0.4%
Services-Producing Sector	1,736.4	1,758.6	1,629.2	-129.4	-7.4%	-107.2	-6.2%
Wholesale & Retail Trade	329.5	337.5	310.0	-27.5	-8.1%	-19.5	-5.9%
Transportation and Warehousing	133.6	129.2	126.3	-2.9	-2.2%	-7.3	-5.5%
Finance, Insurance, Real Estate and Leasing	105.0	106.6	104.0	-2.6	-2.4%	-1.0	-1.0%
Professional, Scientific and Technical Services	178.1	187.5	185.8	-1.7	-0.9%	7.7	4.3%
Business, Building and Other Support Services	94.9	74.0	74.3	0.3	0.4%	-20.6	-21.7%
Educational Services	151.2	158.7	157.5	-1.2	-0.8%	6.3	4.2%
Health Care and Social Assistance	283.2	306.3	286.2	-20.1	-6.6%	3.0	1.1%
Information, Culture and Recreation	72.1	82.4	61.1	-21.3	-25.8%	-11.0	-15.3%
Accommodation and Food Services	148.9	156.8	113.1	-43.7	-27.9%	-35.8	-24.0%
Other Services	118.9	112.5	103.9	-8.6	-7.6%	-15.0	-12.6%
Public Administration	121.0	107.1	107.0	-0.1	-0.1%	-14.0	-11.6%

CANADA

Table: 14-10-0287-01 (282-0087) Labour force survey estimates (LFS), by sex and age group, seasonally adjusted, monthly (persons unless otherwise noted)

	March 2019	February 2020	March 2020	# Change February 2020 - March 2020	% Change February 2020 - March 2020	# Change March 2019 - March 2020	% Change March 2019 - March 2020
Population (x 1,000)	30,582.4	31,027.7	31,074.0	46.3	0.1%	491.6	1.6%
Labour force (x 1,000)	20,079.7	20,323.2	19,725.7	-597.5	-2.94%	-354.0	-1.8%
Employment (x 1,000)	18,922.6	19,189.4	18,178.7	-1,010.7	-5.267%	-743.9	-3.9%
Employment full-time (x 1,000)	15,345.3	15,608.8	15,134.8	-474.0	-3.0%	-210.5	-1.4%
Employment part-time (x 1,000)	3,577.2	3,580.6	3,043.9	-536.7	-15.0%	-533.3	-14.9%
Unemployment (x 1,000)	1,157.2	1,133.8	1,547.0	413.2	36.4%	389.8	33.7%
Unemployment rate (rate)	5.8%	5.6%	7.8%	2.2%		2.0%	
Participation rate (rate)	65.7%	65.5%	63.5%	-2.0%		-2.2%	
Employment rate (rate)	61.9%	61.8%	58.5%	-3.3%		-3.4%	

CANADA

Table: 14-10-0355-01 (282-0088) Labour force survey estimates (LFS), employment by North American Industry Classification System (NAICS), seasonally adjusted, monthly (persons x 1,000)

	March 2019	February 2020	March 2020	# Change February 2020 - March 2020	% Change February 2020 - March 2020	# Change March 2019 - March 2020	% Change March 2019 - March 2020
Total Employed - All Industries	18,922.5	19,189.4	2,212.8	-16,976.6	-88.5%	-16,709.7	-88.3%
Goods-Producing Sector	3,948.3	3,979.8	3,932.6	-47.2	-1.2%	-15.7	-0.4%
Agriculture	280.6	301.5	290.7	-10.8	-3.6%	10.1	3.6%
Forestry, Fishing, Mining, Quarrying, Oil and Gas	347.0	310.6	316.2	5.6	1.8%	-30.8	-8.9%
Utilities	142.4	138.8	133.5	-5.3	-3.8%	-8.9	-6.3%
Construction	1,435.9	1,489.7	1,487.5	-2.2	-0.1%	51.6	3.6%
Manufacturing	1,742.5	1,739.2	1,704.7	-34.5	-2.0%	-37.8	-2.2%
Services-Producing Sector	14,974.2	15,209.6	14,246.1	-963.5	-6.3%	-728.1	-4.9%
Trade	2,828.9	2,881.3	2,673.8	-207.5	-7.2%	-155.1	-5.5%
Transportation and Warehousing	1,032.1	1,033.1	992.7	-40.4	-3.9%	-39.4	-3.8%
Finance, Insurance, Real Estate and Leasing	1,188.0	1,243.0	1,221.1	-21.9	-1.8%	33.1	2.8%
Professional, Scientific and Technical Services	1,539.9	1,562.9	1,559.6	-3.3	-0.2%	19.7	1.3%
Business, Building and Other Support Services	803.9	762.5	742.3	-20.2	-2.6%	-61.6	-7.7%
Educational Services	1,351.0	1,385.6	1,260.2	-125.4	-9.1%	-90.8	-6.7%
Health Care and Social Assistance	2,440.0	2,516.9	2,416.9	-100.0	-4.0%	-23.1	-0.9%
Information, Culture and Recreation	763.1	778.7	675.0	-103.7	-13.3%	-88.1	-11.5%
Accommodation and Food Services	1,204.5	1,229.4	935.0	-294.4	-23.9%	-269.5	-22.4%
Other Services	819.7	805.3	765.3	-40.0	-5.0%	-54.4	-6.6%
Public Administration	1,003.2	1,010.9	1,004.3	-6.6	-0.7%	1.1	0.1%

Unemployment Rates for Key Markets

	March 2019	February 2020	March 2020
Calgary	7.7%	7.4%	8.6%
Alberta	6.9%	7.2%	8.7%
Canada	5.8%	5.6%	7.8%
Montreal	5.7%	5.5%	6.4%
Ottawa	5.1%	4.3%	5.1%
Toronto	6.6%	4.3%	5.1%
Edmonton	7.1%	7.8%	7.9%
Vancouver	4.8%	4.4%	5.3%
Winnipeg	5.4%	4.9%	5.5%
Regina	4.6%	6.6%	7.2%
Saskatoon	6.1%	6.5%	7.1%
Wood Buffalo			

Facts & Figures

Highest Unemployment Rate during 2008-2010 downturn: 7.5% in January 2010

Highest Unemployment Rate during 1992-1996 downturn: 10.8% in July 1993

Number of additional jobs we would need to lose to reach this level: 19,723
(or amount labour force would need to grow by with no additional new jobs)

Highest Unemployment Rate during 1982-1985 downturn: 13.2% in March 1983

Number of additional jobs we would need to lose to reach this level: 41,661
(or amount labour force would need to grow by with no additional new jobs)

The last time Calgary had negative employment growth:

Between November 2009 and May 2010 Calgary lost 12,900 jobs.

Between November 2008 and July 2009 Calgary lost 27,000 jobs.

From peak employment in November 2008 to the lowest level reached in May 2010 - 33,400 jobs were lost in Calgary.

Calgary lost a small number of jobs July-August 2012 (2,400), again in March 2013 (3,200), and again (3,300) in February to April 2014.

Calgary

Number of jobs gained/lost in 2014: 17,600

Number of jobs gained/lost in 2015: (8,100)

Number of jobs gained/lost December 2014 to June 2016: (13,300)

Number of jobs gained/lost in 2016: 14,400

Number of jobs gained/lost in 2017: 15,500

Number of jobs gained/lost in 2018: 10,100

Number of jobs gained/lost in 2019: 22,800

Number of jobs gained/lost in 2020 (to-date): (16,100)

Alberta

Number of jobs gained/lost in 2014: 59,900

Number of jobs gained/lost in 2015: (20,500)

Number of jobs gained/lost December 2014 to June 2016: (46,100)

Number of jobs gained/lost in 2016: (15,700)

Number of jobs gained/lost in 2017: 54,900

Number of jobs gained/lost in 2018: 21,300

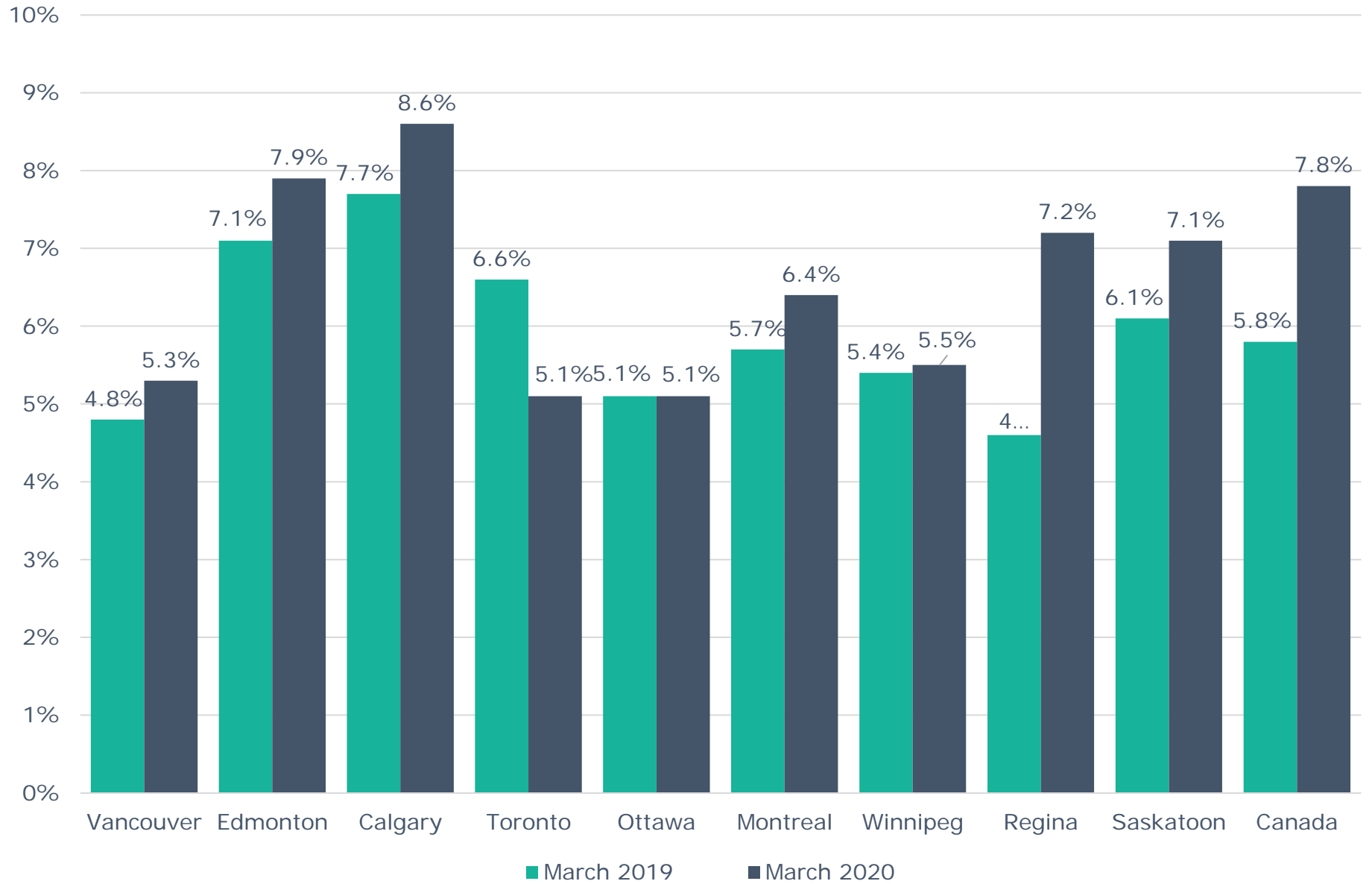
Number of jobs gained/lost in 2019: 11,000

Number of jobs gained/lost in 2020 (to-date): (18,900)

Source: Calgary - Table 14-10-0294-02 (282-0135); Alberta - 14-10-0287-01 (282-0087); Statistics Canada

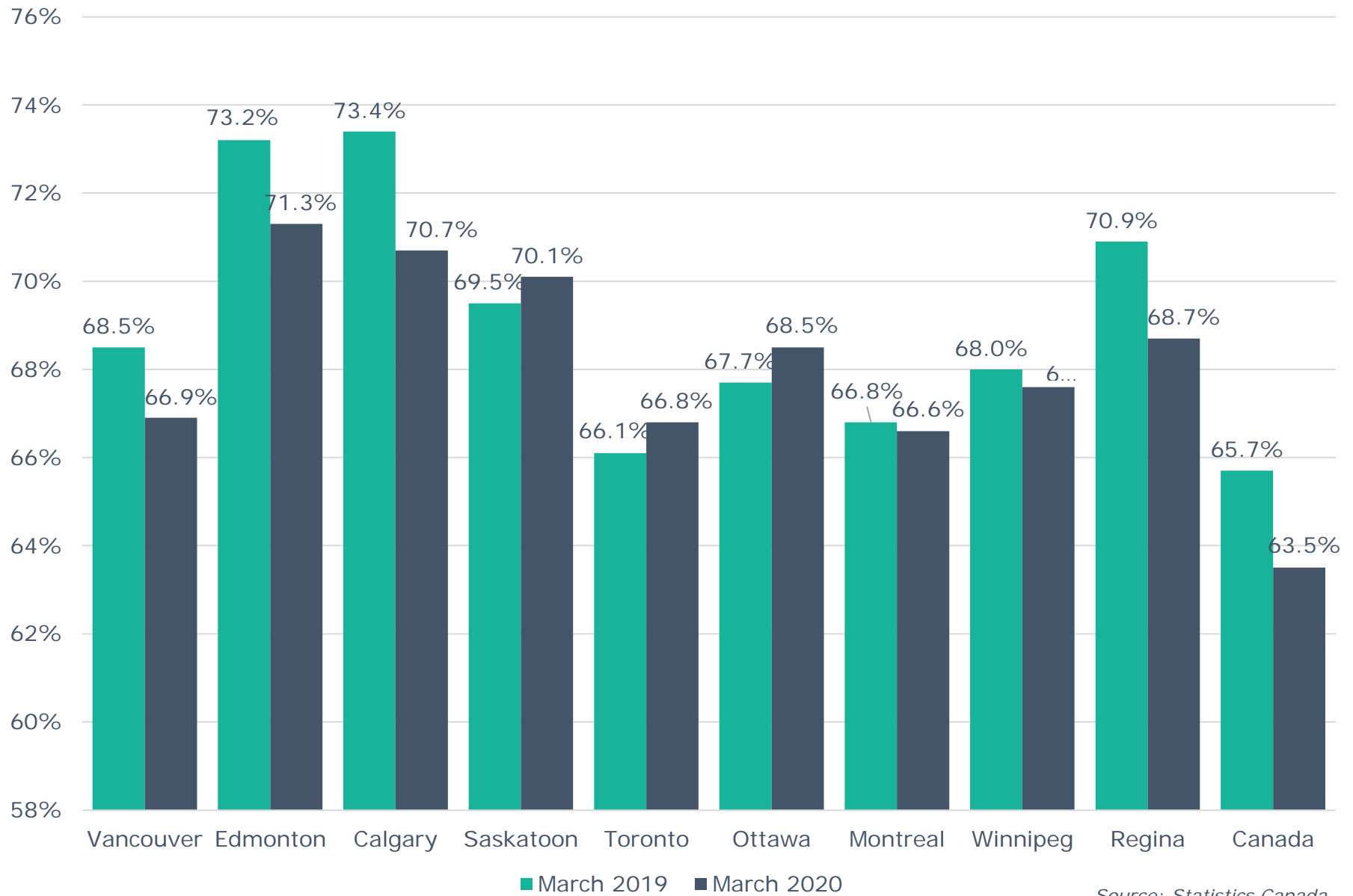
Note: Labour Force Survey, Employment, Seasonally Adjusted

Unemployment Rate Across Canada



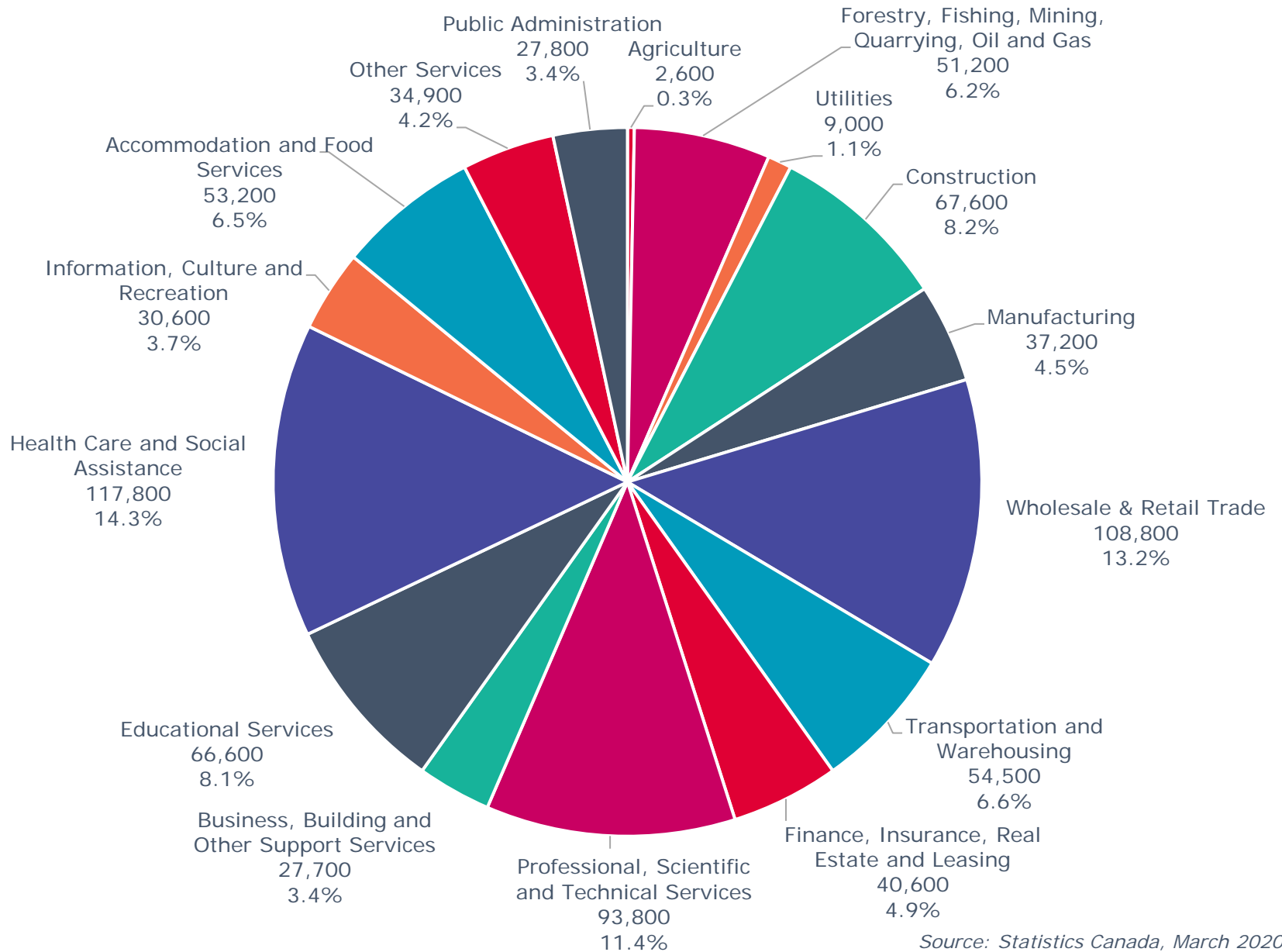
Source: Statistics Canada

Labour Force Participation Rate Across Canada



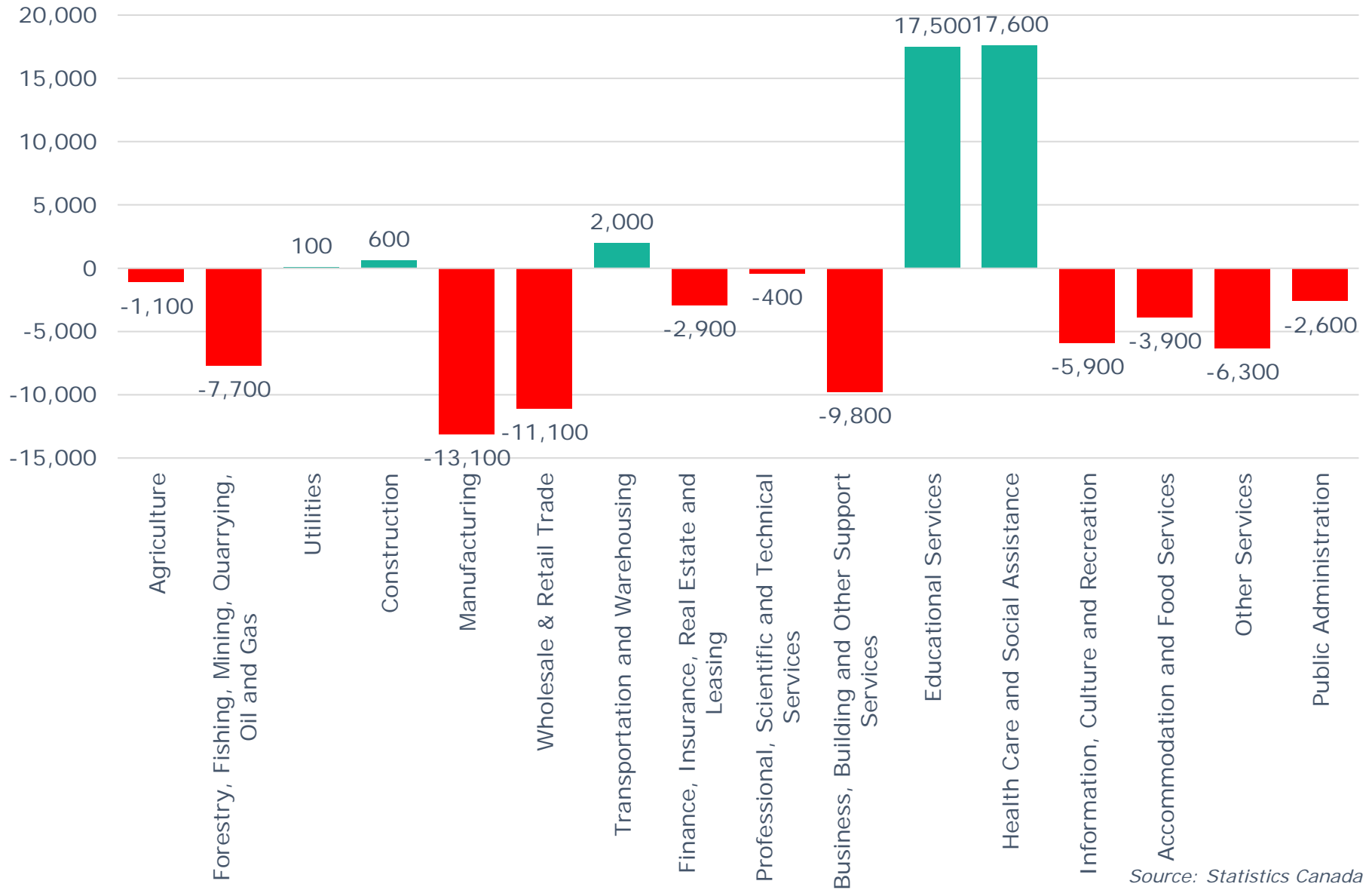
Source: Statistics Canada

Calgary CMA Employment by Industry (824,100)



Source: Statistics Canada, March 2020

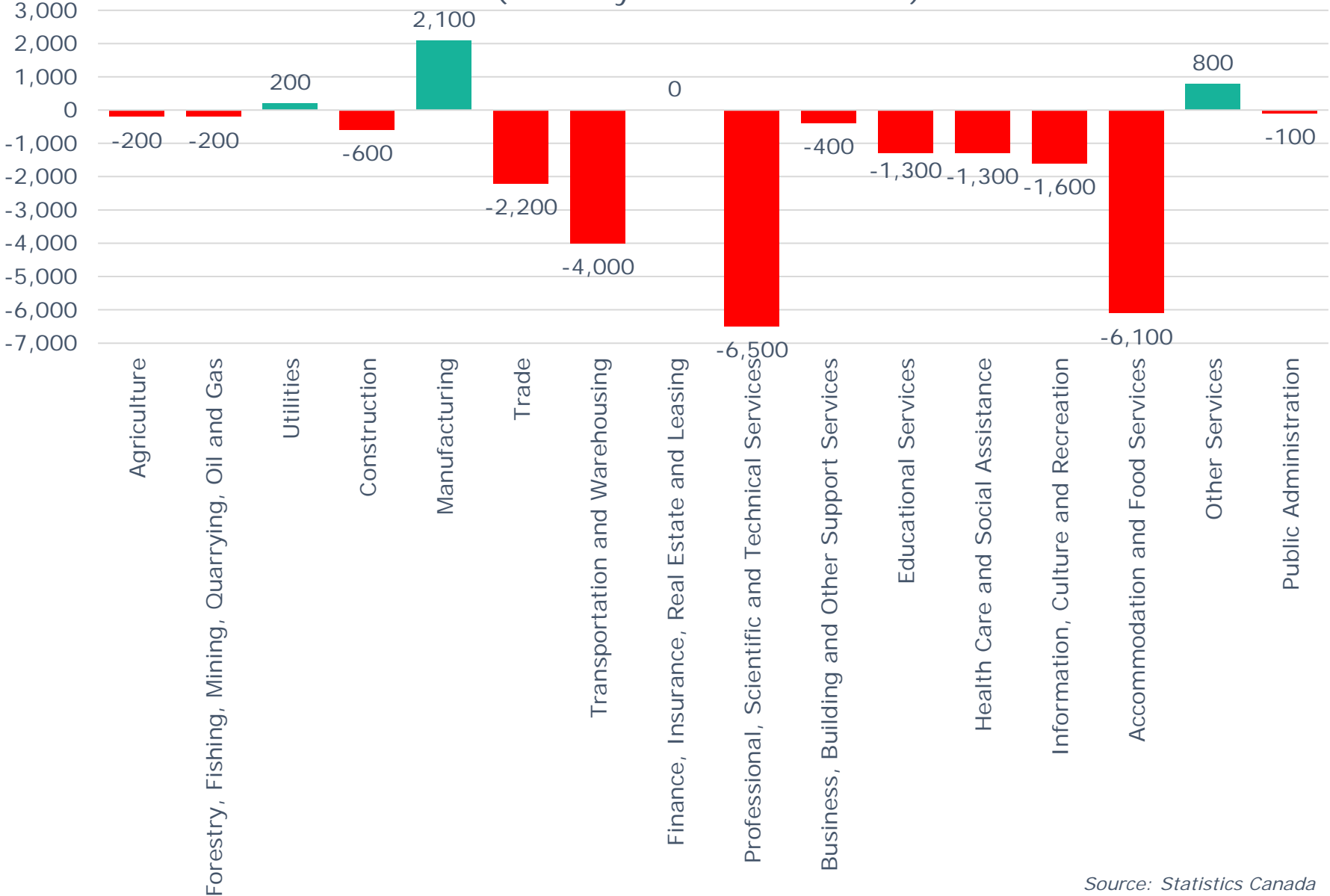
Calgary CMA 12-Month Net Jobs Gained or Lost by Industry (March 2020)



Source: Statistics Canada

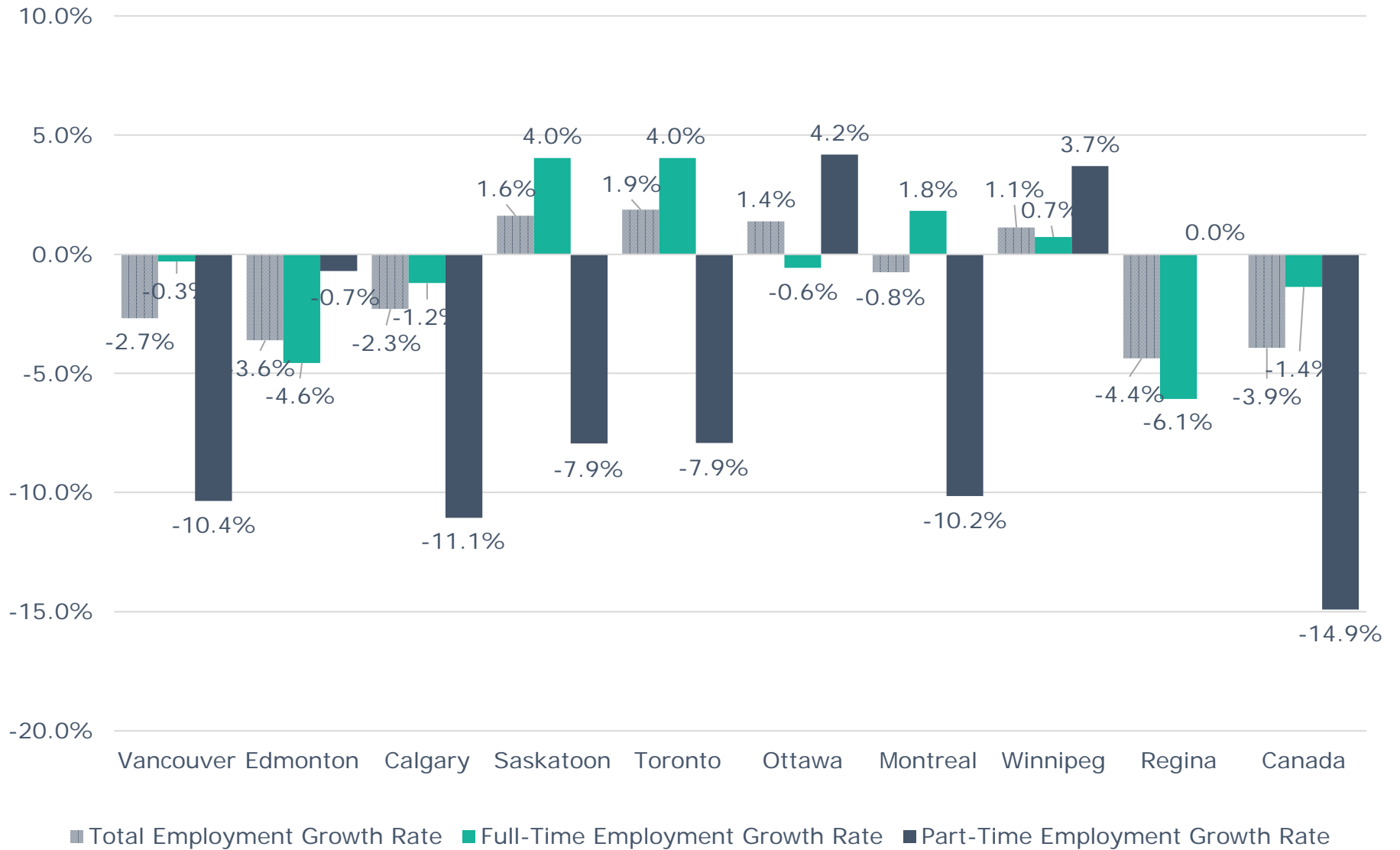
Calgary CMA Monthly Net Jobs Gained or Lost by Industry

(February 2020 - March 2020)



Source: Statistics Canada

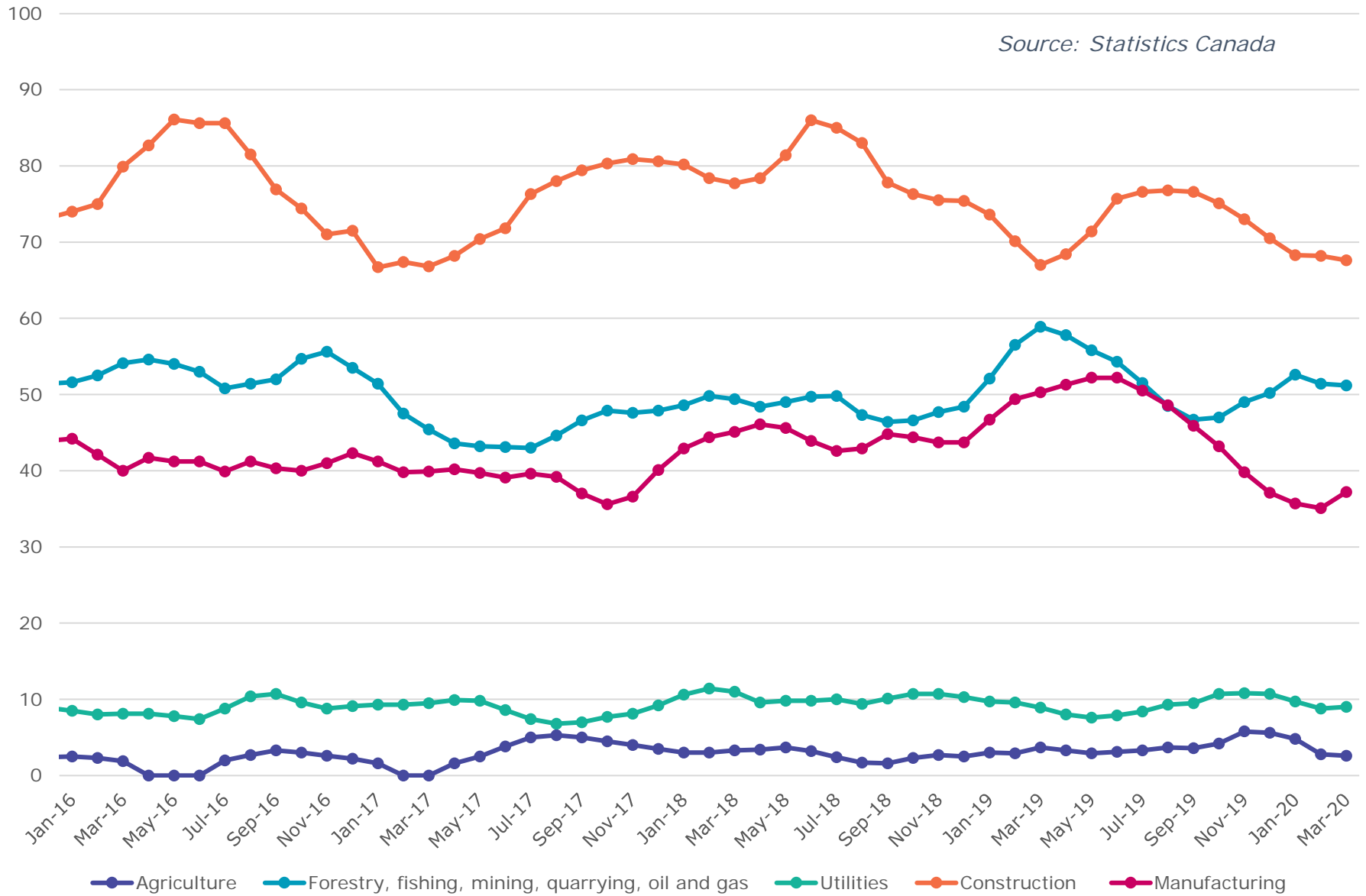
Annual Employment Growth



Source: Statistics Canada, March 2019 - March 2020

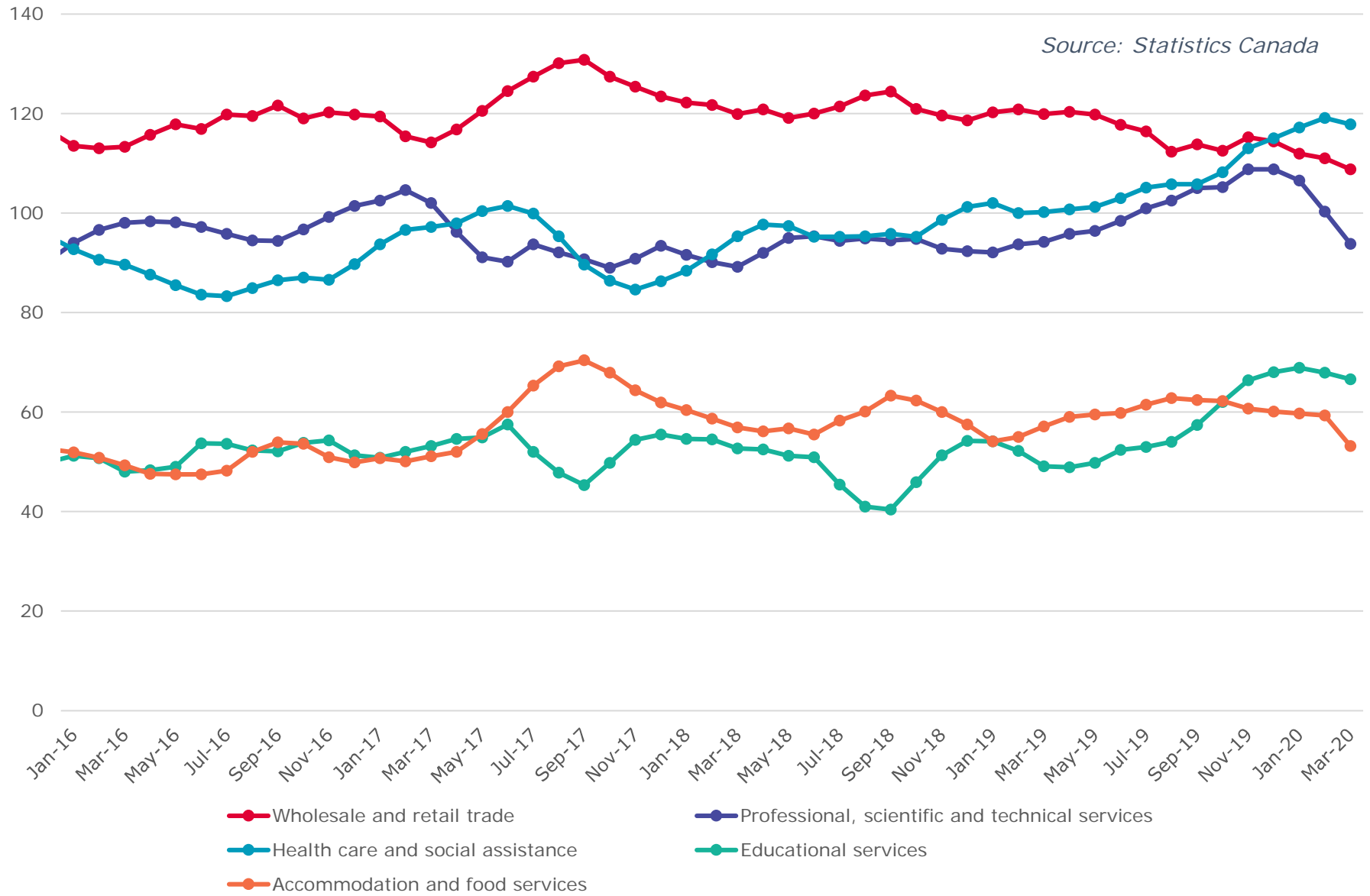
Calgary CMA Goods Producing Sectors - Number of Employees (In thousands)

Source: Statistics Canada



Calgary CMA Largest 5 Services Sector by Number of Employees (In thousands)

Source: Statistics Canada



Calgary CMA Smallest 6 Service Sectors by Number of Employees
(In thousands)

