



Labour Force Survey Statistics September 2022

CALGARY CMA

Table 14-10-0380-02 (282-0135) Labour force survey estimates (LFS), by census metropolitan area based on 2011 census boundaries, 3-month moving average, seasonally adjusted, monthly (persons unless otherwise noted)

	September 2021	August 2022	September 2022	# Change August 2022 - September 2022	% Change August 2022 - September 2022	# Change September 2021 - September 2022	% Change September 2021 - September 2022
Population (x 1,000)	1,268.3	1,298.6	1,302.4	3.8	0.3%	34.1	2.7%
Labour force (x 1,000)	894.5	940.9	941.3	0.4	0.0%	46.8	5.2%
Employment (x 1,000)	818.1	894.8	892.3	-2.5	-0.3%	74.2	9.1%
Unemployment (x 1,000)	76.4	46.1	49.0	2.9	6.3%	-27.4	-35.9%
Unemployment rate (rate)	8.5%	4.9%	5.2%	0.3%		-3.3%	
Participation rate (rate)	70.5%	72.5%	72.3%	-0.2%		1.8%	
Employment rate (rate)	64.5%	68.9%	68.5%	-0.4%		4.0%	

CALGARY CMA

Table 14-10-0378-01 (282-0128) Labour force survey estimates (LFS), by census metropolitan area based on 2011 census boundaries, 3-month moving average, unadjusted for seasonality, monthly (persons unless otherwise noted)

	September 2021	August 2022	September 2022	# Change August 2022 - September 2022	% Change August 2022 - September 2022	# Change September 2021 - September 2022	% Change September 2021 - September 2022
Population (x 1,000)	1,268.3	1,298.6	1,302.4	3.8	0.3%	34.1	2.7%
Labour force (x 1,000)	905.3	951.2	954.1	2.9	0.3%	48.8	5.4%
Employment (x 1,000)	821.2	897.3	897.1	-0.2	0.0%	75.9	9.2%
Full-time employment (x 1,000)	669.9	761.6	762.0	0.4	0.1%	92.1	13.7%
Part-time employment (x 1,000)	151.3	135.7	135.1	-0.6	-0.4%	-16.2	-10.7%
Unemployment (x 1,000)	84.1	54.0	57.0	3.0	5.6%	-27.1	-32.2%
Not in labour force (x 1,000)	363.0	347.3	348.3	1.0	0.3%	-14.7	-4.0%
Unemployment rate (rate)	9.3%	5.7%	6.0%	0.3%		-3.3%	
Participation rate (rate)	71.4%	73.2%	73.3%	0.1%		1.9%	
Employment rate (rate)	64.7%	69.1%	68.9%	-0.2%		4.2%	

CALGARY CMA

Table: 14-10-0397-01 (282-0130) Labour force survey estimates (LFS), employment by census metropolitan area based on 2011 census boundaries and North American Industry Classification System (NAICS), 3-month moving average, unadjusted for seasonality, monthly (persons x 1,000)

	September 2021	August 2022	September 2022	# Change August 2022 - September 2022	% Change August 2022 - September 2022	# Change September 2021 - September 2022	% Change September 2021 - September 2022
Total Employed - All Industries	821.2	897.3	897.1	-0.2	0.0%	75.9	9.2%
Goods-Producing Sector	179.3	173.4	175.3	1.9	1.1%	-4.0	-2.2%
Agriculture	2.0	2.9	3.7	0.8	27.6%	1.7	85.0%
Forestry, Fishing, Mining, Quarrying, Oil and Gas	48.6	40.9	42.2	1.3	3.2%	-6.4	-13.2%
Utilities	7.9	10.4	11.4	1.0	9.6%	3.5	44.3%
Construction	77.2	82.8	80.1	-2.7	-3.3%	2.9	3.8%
Manufacturing	43.7	36.3	37.8	1.5	4.1%	-5.9	-13.5%
Services-Producing Sector	641.9	723.9	721.8	-2.1	-0.3%	79.9	12.4%
Wholesale & Retail Trade	111.8	137.9	139.3	1.4	1.0%	27.5	24.6%
Transportation and Warehousing	54.8	60.7	61.0	0.3	0.5%	6.2	11.3%
Finance, Insurance, Real Estate and Leasing	55.4	55.6	55.4	-0.2	-0.4%	0.0	0.0%
Professional, Scientific and Technical Services	99.2	119.4	120.2	0.8	0.7%	21.0	21.2%
Business, Building and Other Support Services	28.3	25.6	25.2	-0.4	-1.6%	-3.1	-11.0%
Educational Services	57.5	57.1	55.6	-1.5	-2.6%	-1.9	-3.3%
Health Care and Social Assistance	106.6	101.9	108.0	6.1	6.0%	1.4	1.3%
Information, Culture and Recreation	32.2	44.4	41.7	-2.7	-6.1%	9.5	29.5%
Accommodation and Food Services	44.0	54.6	52.5	-2.1	-3.8%	8.5	19.3%
Other Services	29.8	26.5	25.6	-0.9	-3.4%	-4.2	-14.1%
Public Administration	22.3	40.1	37.4	-2.7	-6.7%	15.1	67.7%

Province of Alberta

Table: 14-10-0287-01 (282-0087) Labour force survey estimates (LFS), by sex and age group, seasonally adjusted, monthly (persons unless otherwise noted)

	September 2021	August 2022	September 2022	# Change August 2022 - September 2022	% Change August 2022 - September 2022	# Change September 2021 - September 2022	% Change September 2021 - September 2022
Population (x 1,000)	3,550.2	3,627.6	3,637.8	10.2	0.3%	87.6	2.5%
Labour force (x 1,000)	2,476.0	2,495.5	2,509.4	13.9	0.56%	33.4	1.3%
Employment (x 1,000)	2,275.4	2,361.5	2,372.3	10.8	0.5%	96.9	4.3%
Employment full-time (x 1,000)	1,846.7	1,929.8	1,916.7	-13.1	-0.7%	70.0	3.8%
Employment part-time (x 1,000)	428.6	431.7	455.7	24.0	5.6%	27.1	6.3%
Unemployment (x 1,000)	200.6	134.0	137.0	3.0	2.2%	-63.6	-31.7%
Unemployment rate (rate)	8.1%	5.4%	5.5%	0.1%		-2.6%	
Participation rate (rate)	69.7%	68.8%	69.0%	0.2%		-0.7%	
Employment rate (rate)	64.1%	65.1%	65.2%	0.1%		1.1%	

Province of Alberta

Table: 14-10-0355-01 (282-0088) Labour force survey estimates (LFS), employment by North American Industry Classification System (NAICS), seasonally adjusted, monthly (persons x 1,000)

	September 2021	August 2022	September 2022	# Change August 2022 - September 2022	% Change August 2022 - September 2022	# Change September 2021 - September 2022	% Change September 2021 - September 2022
Total Employed - All Industries	2,275.4	2,361.5	2,372.3	10.8	0.5%	96.9	4.3%
Goods-Producing Sector	537.8	556.9	559.6	2.7	0.5%	21.8	4.1%
Agriculture	35.2	44.5	41.2	-3.3	-7.4%	6.0	17.0%
Forestry, Fishing, Mining, Quarrying, Oil and Gas	147.9	145.2	142.8	-2.4	-1.7%	-5.1	-3.4%
Utilities	19.2	21.7	23.6	1.9	8.8%	4.4	22.9%
Construction	215.1	221.2	226.6	5.4	2.4%	11.5	5.3%
Manufacturing	120.4	124.4	125.2	0.8	0.6%	4.8	4.0%
Services-Producing Sector	1,737.6	1,804.5	1,812.8	8.3	0.5%	75.2	4.3%
Wholesale & Retail Trade	343.9	369.1	373.1	4.0	1.1%	29.2	8.5%
Transportation and Warehousing	136.5	132.8	132.9	0.1	0.1%	-3.6	-2.6%
Finance, Insurance, Real Estate and Leasing	122.7	121.4	122.3	0.9	0.7%	-0.4	-0.3%
Professional, Scientific and Technical Services	191.6	212.7	222.2	9.5	4.5%	30.6	16.0%
Business, Building and Other Support Services	70.2	72.6	72.6	0.0	0.0%	2.4	3.4%
Educational Services	171.6	155.9	159.4	3.5	2.2%	-12.2	-7.1%
Health Care and Social Assistance	300.5	308.2	311.7	3.5	1.1%	11.2	3.7%
Information, Culture and Recreation	69.2	86.8	76.4	-10.4	-12.0%	7.2	10.4%
Accommodation and Food Services	127.6	132.0	133.6	1.6	1.2%	6.0	4.7%
Other Services	97.4	103.2	104.5	1.3	1.3%	7.1	7.3%
Public Administration	106.3	109.8	104.2	-5.6	-5.1%	-2.1	-2.0%

CANADA

Table: 14-10-0287-01 (282-0087) Labour force survey estimates (LFS), by sex and age group, seasonally adjusted, monthly (persons unless otherwise noted)

	September 2021	August 2022	September 2022	# Change August 2022 - September 2022	% Change August 2022 - September 2022	# Change September 2021 - September 2022	% Change September 2021 - September 2022
Population (x 1,000)	31,391.3	31,831.6	31,875.4	43.8	0.1%	484.1	1.5%
Labour force (x 1,000)	20,560.7	20,639.8	20,619.5	-20.3	-0.10%	58.8	0.3%
Employment (x 1,000)	19,121.8	19,526.8	19,547.9	21.1	0.108%	426.1	2.2%
Employment full-time (x 1,000)	15,558.3	15,938.3	15,944.0	5.7	0.0%	385.7	2.5%
Employment part-time (x 1,000)	3,563.5	3,588.5	3,603.9	15.4	0.4%	40.4	1.1%
Unemployment (x 1,000)	1,438.9	1,113.0	1,071.6	-41.4	-3.7%	-367.3	-25.5%
Unemployment rate (rate)	7.0%	5.4%	5.2%	-0.2%		-1.8%	
Participation rate (rate)	65.5%	64.8%	64.7%	-0.1%		-0.8%	
Employment rate (rate)	60.9%	61.3%	61.3%	0.0%		0.4%	

CANADA

Table: 14-10-0355-01 (282-0088) Labour force survey estimates (LFS), employment by North American Industry Classification System (NAICS), seasonally adjusted, monthly (persons x 1,000)

	September 2021	August 2022	September 2022	# Change August 2022 - September 2022	% Change August 2022 - September 2022	# Change September 2021 - September 2022	% Change September 2021 - September 2022
Total Employed - All Industries	19,121.8	19,526.8	19,547.9	21.1	0.1%	426.1	2.2%
Goods-Producing Sector	3,869.8	4,006.8	3,982.0	-24.8	-0.6%	112.2	2.9%
Agriculture	241.3	261.5	258.6	-2.9	-1.1%	17.3	7.2%
Forestry, Fishing, Mining, Quarrying, Oil and Gas	333.8	333.6	339.5	5.9	1.8%	5.7	1.7%
Utilities	139.1	151.0	154.0	3.0	2.0%	14.9	10.7%
Construction	1,423.5	1,512.7	1,509.4	-3.3	-0.2%	85.9	6.0%
Manufacturing	1,732.0	1,747.9	1,720.4	-27.5	-1.6%	-11.6	-0.7%
Services-Producing Sector	15,252.1	15,520.0	15,565.9	45.9	0.3%	313.8	2.1%
Wholesale and retail trade	2,835.9	2,910.0	2,907.3	-2.7	-0.1%	71.4	2.5%
Transportation and Warehousing	1,003.5	1,005.3	987.1	-18.2	-1.8%	-16.4	-1.6%
Finance, Insurance, Real Estate and Leasing	1,315.2	1,344.0	1,341.4	-2.6	-0.2%	26.2	2.0%
Professional, Scientific and Technical Services	1,722.7	1,808.7	1,818.0	9.3	0.5%	95.3	5.5%
Business, Building and Other Support Services	722.9	697.7	708.2	10.5	1.5%	-14.7	-2.0%
Educational Services	1,473.7	1,430.0	1,476.0	46.0	3.2%	2.3	0.2%
Health Care and Social Assistance	2,572.4	2,596.4	2,620.2	23.8	0.9%	47.8	1.9%
Information, Culture and Recreation	750.5	818.6	797.1	-21.5	-2.6%	46.6	6.2%
Accommodation and Food Services	1,038.9	1,046.8	1,059.0	12.2	1.2%	20.1	1.9%
Other Services	711.1	727.5	728.4	0.9	0.1%	17.3	2.4%
Public Administration	1,105.3	1,135.0	1,123.2	-11.8	-1.0%	17.9	1.6%

Unemployment Rates for Key Markets

	September 2021	August 2022	September 2022
Calgary	8.5%	4.9%	5.2%
Alberta	8.1%	5.4%	5.5%
Canada	7.0%	5.4%	5.2%
Montreal	6.7%	4.9%	4.9%
Ottawa	5.3%	3.4%	4.1%
Toronto	8.8%	3.4%	4.1%
Edmonton	8.0%	4.9%	4.8%
Vancouver	6.7%	4.8%	4.5%
Winnipeg	6.4%	4.3%	4.6%
Regina	6.1%	4.4%	4.3%
Saskatoon	7.6%	3.9%	4.2%
Wood Buffalo			

Facts & Figures

Highest Unemployment Rate during 2008-2010 downturn: 7.5% in January 2010

Highest Unemployment Rate during 1992-1996 downturn: 10.8% in July 1993
 Number of additional jobs we would need to lose to reach this level: 52,660
 (or amount labour force would need to grow by with no additional new jobs)

Highest Unemployment Rate during 1982-1985 downturn: 13.2% in March 1983
 Number of additional jobs we would need to lose to reach this level: 75,252
 (or amount labour force would need to grow by with no additional new jobs)

The last time Calgary had negative employment growth:

Between November 2009 and May 2010 Calgary lost 12,900 jobs.
 Between November 2008 and July 2009 Calgary lost 27,000 jobs.
 From peak employment in November 2008 to the lowest level reached in May 2010 - 33,400 jobs were lost in Calgary.

Calgary lost a small number of jobs July-August 2012 (2,400), again in March 2013 (3,200), and again (3,300) in February to April 2014.

Calgary

Number of jobs gained/lost in 2014:	11,300
Number of jobs gained/lost in 2015:	(16,200)
Number of jobs gained/lost December 2014 to June 2016:	(23,100)
Number of jobs gained/lost in 2016:	12,700
Number of jobs gained/lost in 2017:	14,400
Number of jobs gained/lost in 2018:	8,800
Number of jobs gained/lost in 2019:	14,400
Number of jobs gained/lost in 2020:	(5,600)
Number of jobs gained/lost in 2021:	7,100
Number of jobs gained/lost in 2022 (to-date):	64,100

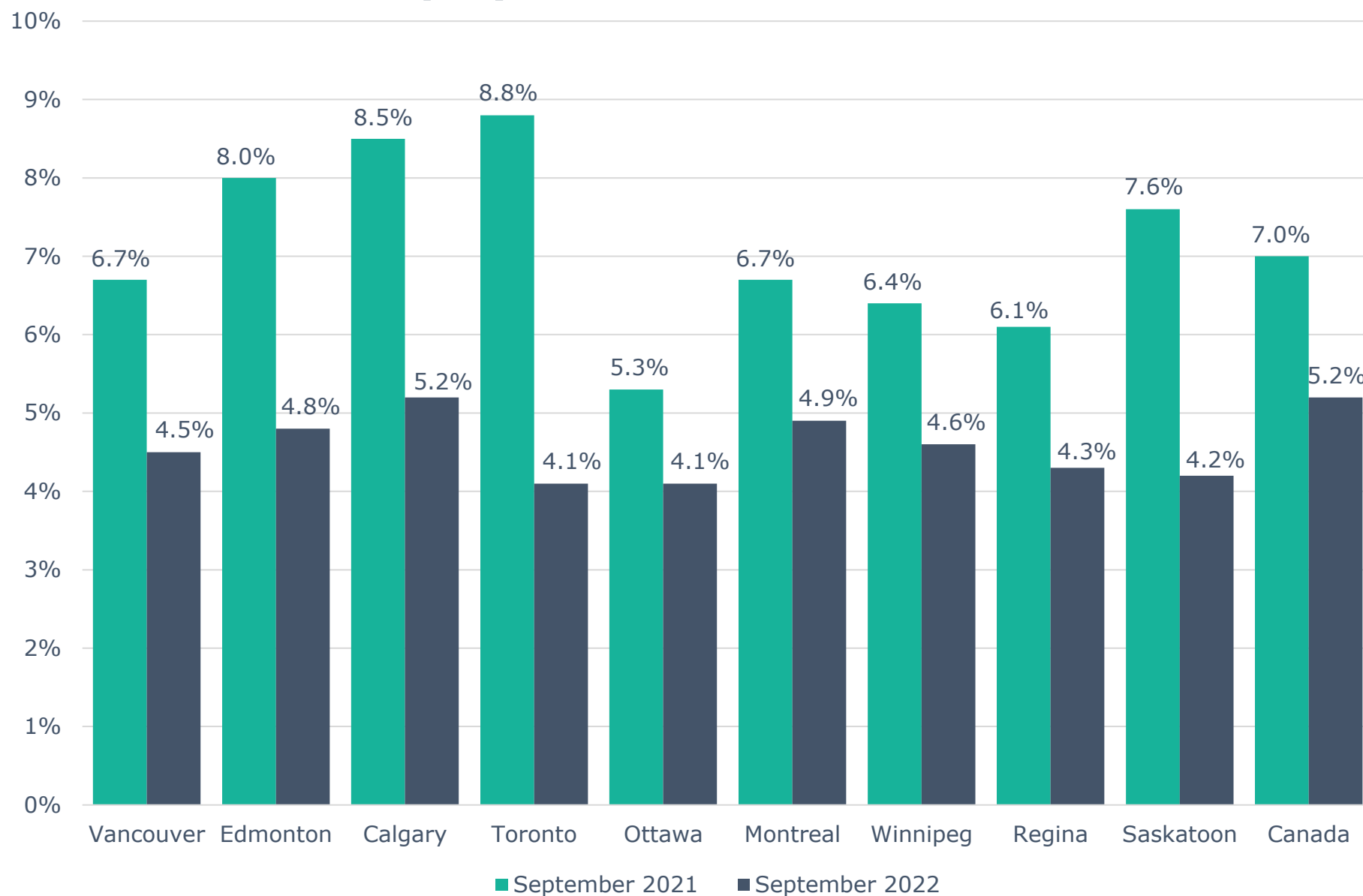
Alberta

Number of jobs gained/lost in 2014:	46,000
Number of jobs gained/lost in 2015:	(40,100)
Number of jobs gained/lost December 2014 to June 2016:	(73,800)
Number of jobs gained/lost in 2016:	(21,500)
Number of jobs gained/lost in 2017:	57,300
Number of jobs gained/lost in 2018:	21,000
Number of jobs gained/lost in 2019:	(3,700)
Number of jobs gained/lost in 2020:	(109,900)
Number of jobs gained/lost in 2021:	139,200
Number of jobs gained/lost in 2022 (to-date):	72,500

Source: Calgary - Table 14-10-0294-02 (282-0135); Alberta - 14-10-0287-01 (282-0087); Statistics Canada

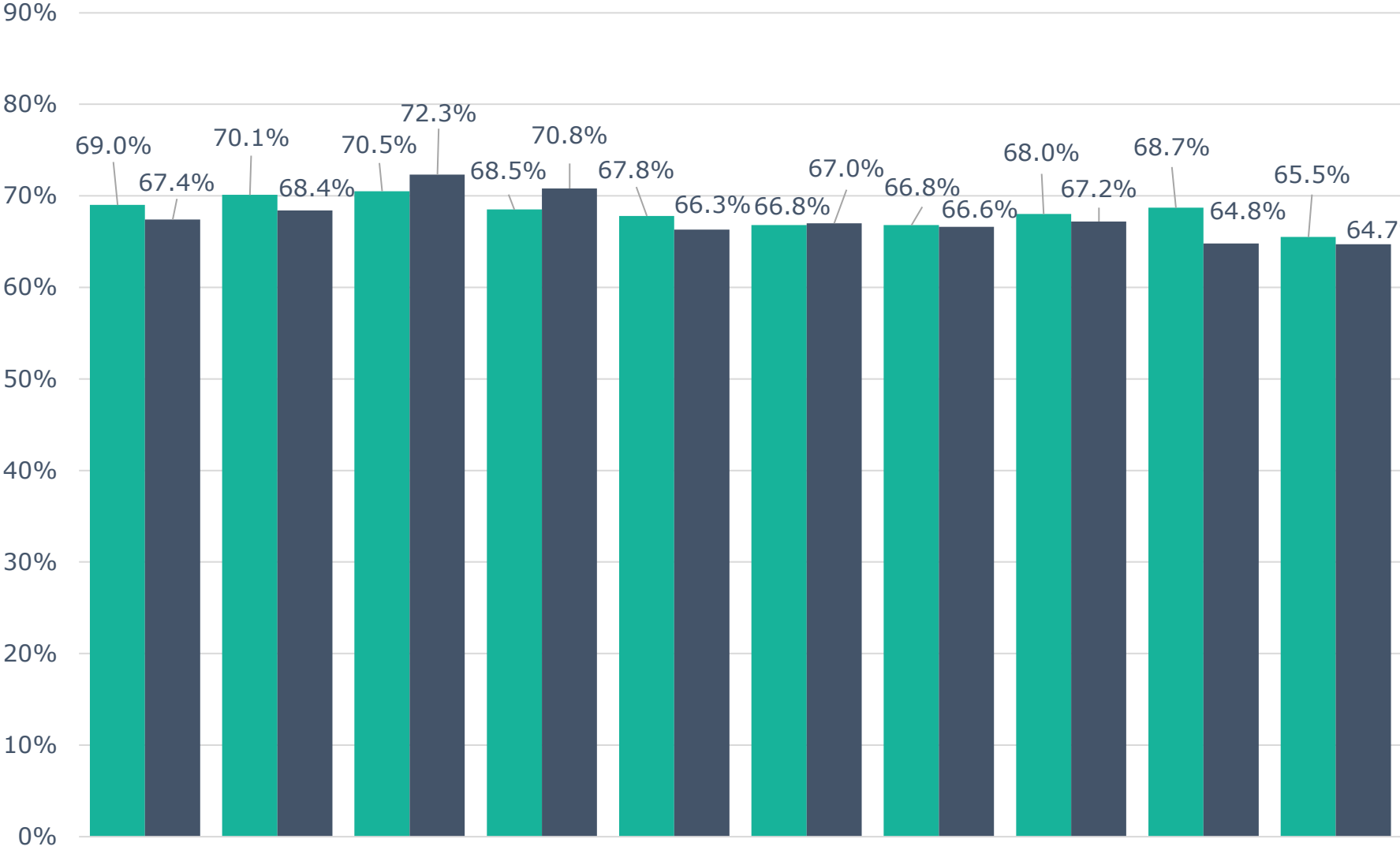
Note: Labour Force Survey, Employment, Seasonally Adjusted

Unemployment Rate Across Canada



Source: Statistics Canada

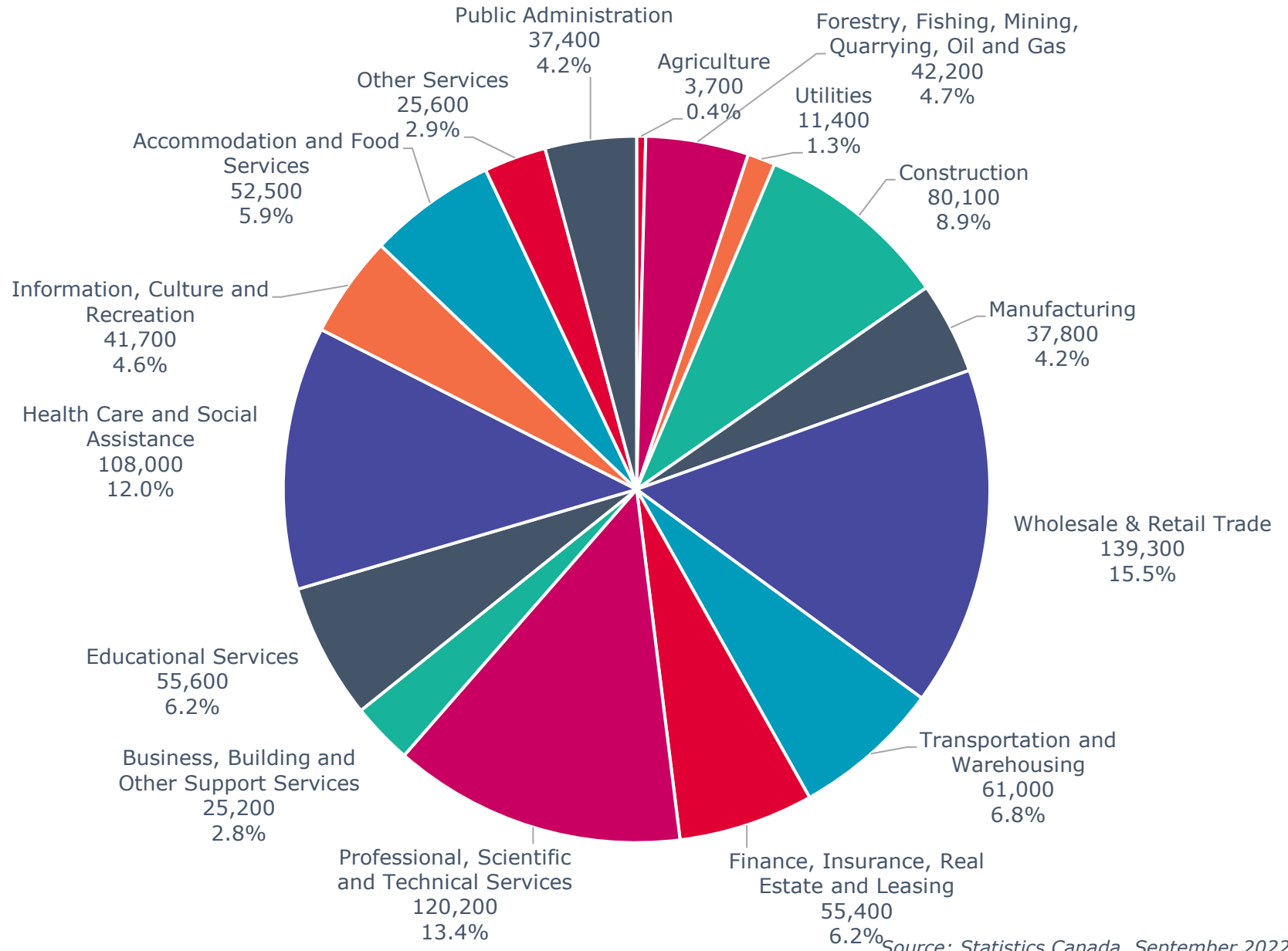
Labour Force Participation Rate Across Canada



■ September 2021 ■ September 2022

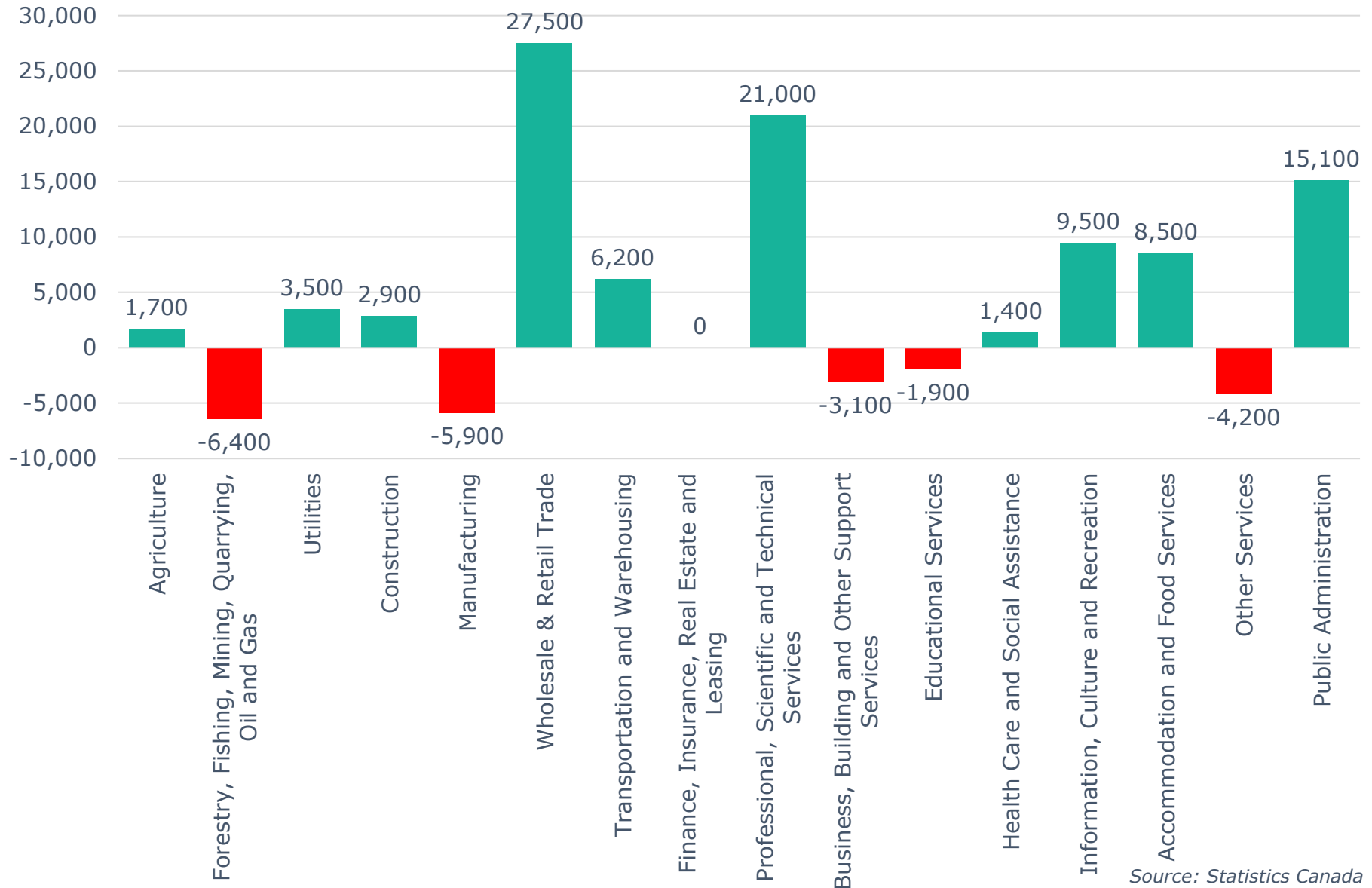
Source: Statistics Canada

Calgary CMA Employment by Industry (897,100)



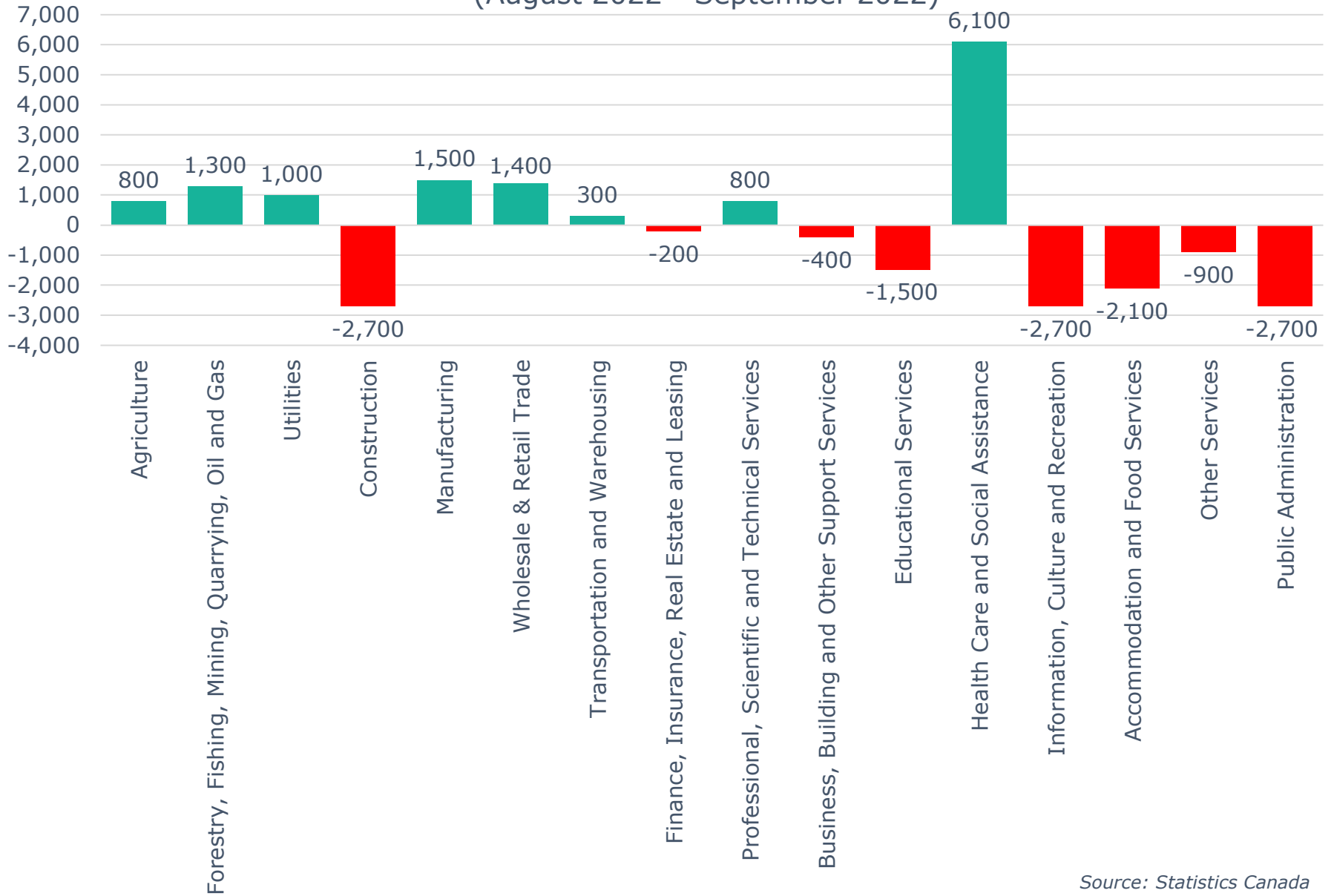
Source: Statistics Canada, September 2022

Calgary CMA 12-Month Net Jobs Gained or Lost by Industry (September 2022)



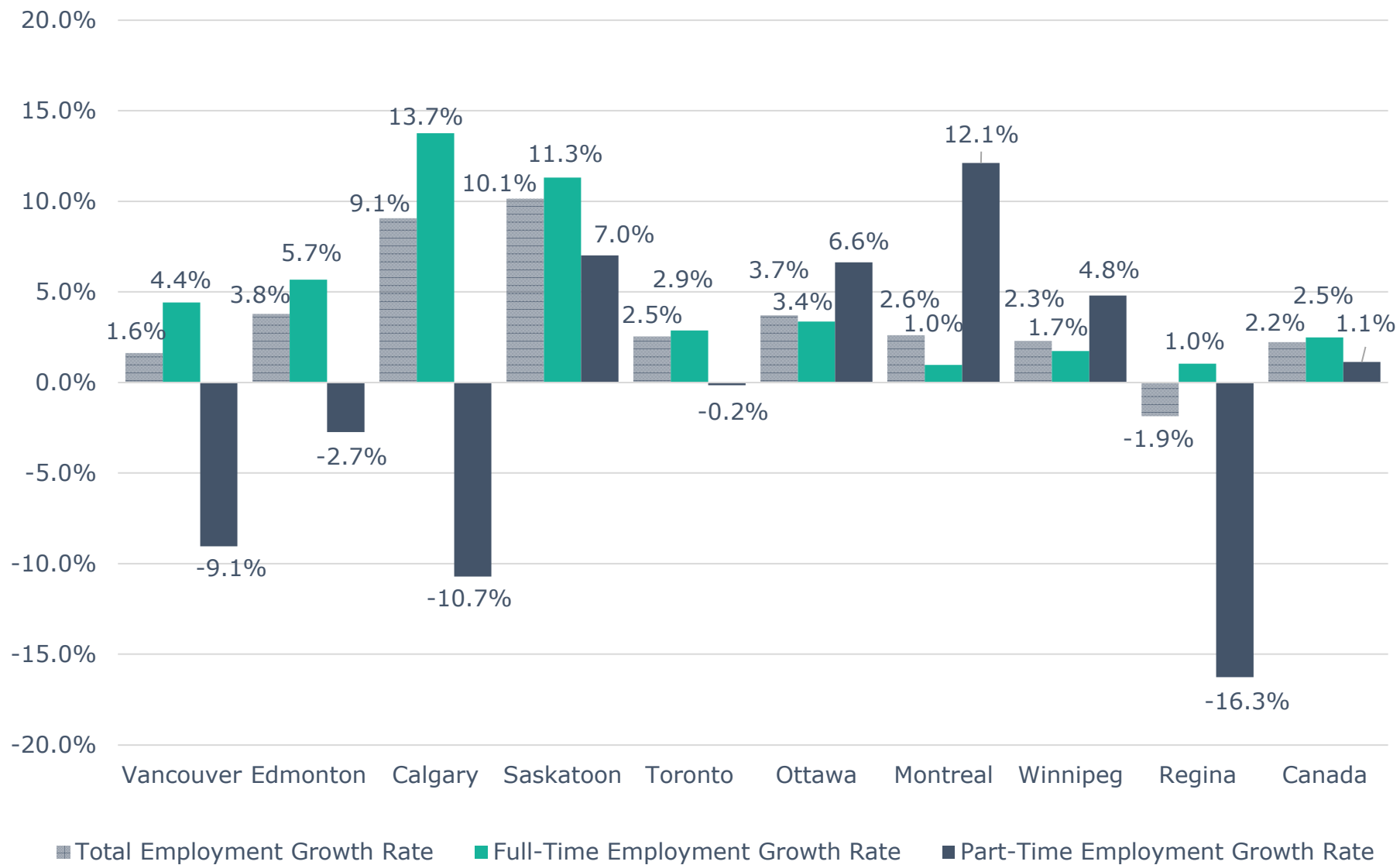
Source: Statistics Canada

Calgary CMA Monthly Net Jobs Gained or Lost by Industry (August 2022 - September 2022)



Source: Statistics Canada

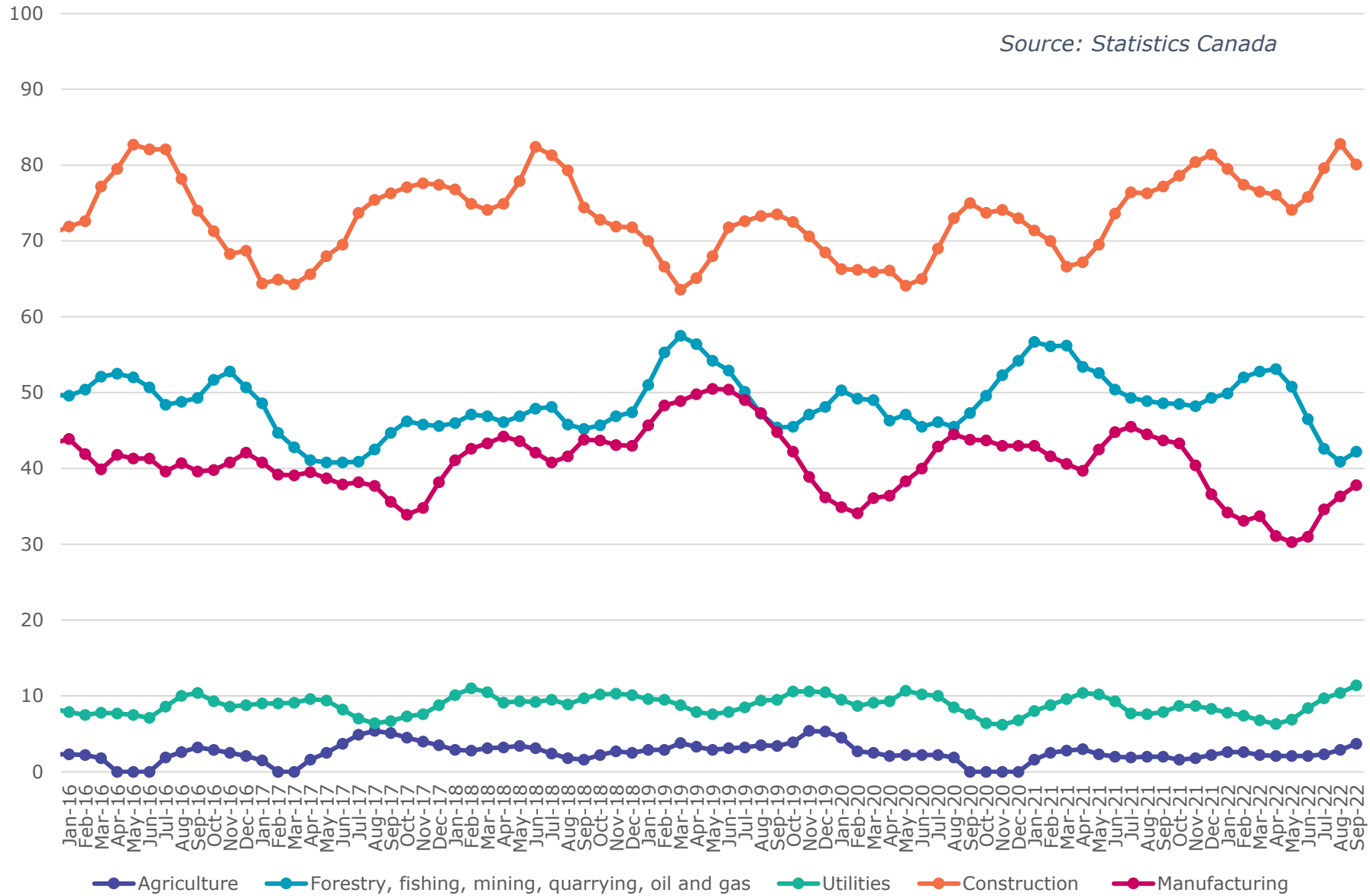
Annual Employment Growth



Source: Statistics Canada, September 2021 - September 2022

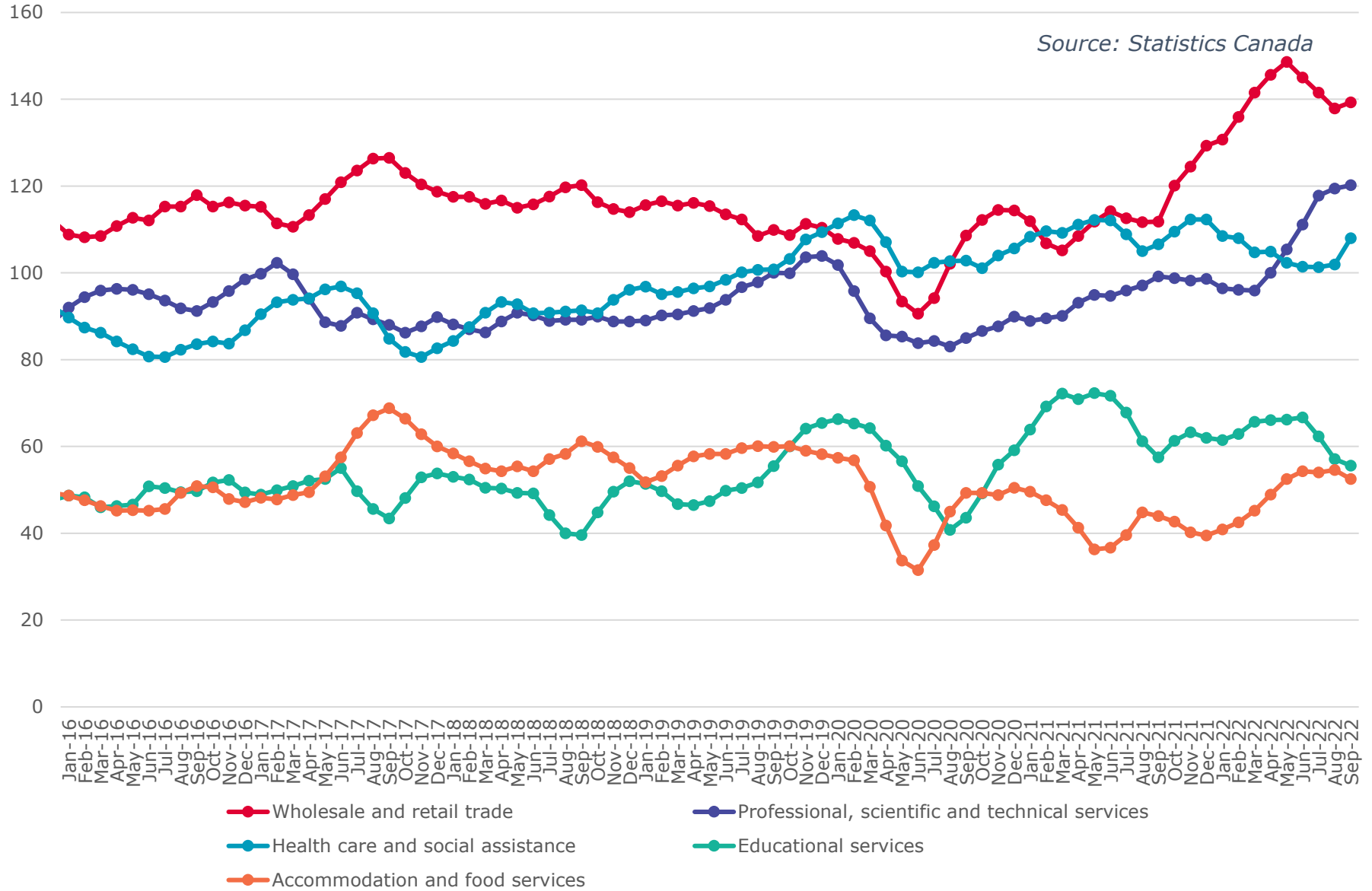
Calgary CMA Goods Producing Sectors - Number of Employees (In thousands)

Source: Statistics Canada



Calgary CMA Largest 5 Services Sector by Number of Employees (In thousands)

Source: Statistics Canada



Calgary CMA Smallest 6 Service Sectors by Number of Employees (In thousands)

Source: Statistics Canada

