



**Labour Force Survey Statistics October 2022**

## CALGARY CMA

**Table 14-10-0380-02 (282-0135) Labour force survey estimates (LFS), by census metropolitan area based on 2011 census boundaries, 3-month moving average, seasonally adjusted, monthly (persons unless otherwise noted)**

	October 2021	September 2022	October 2022	# Change September 2022 - October 2022	% Change September 2022 - October 2022	# Change October 2021 - October 2022	% Change October 2021 - October 2022
Population (x 1,000)	1,270.5	1,302.4	1,306.6	4.2	0.3%	36.1	2.8%
Labour force (x 1,000)	901.0	941.3	938.3	-3.0	-0.3%	37.3	4.1%
Employment (x 1,000)	829.7	892.3	888.8	-3.5	-0.4%	59.1	7.1%
Unemployment (x 1,000)	71.3	49.0	49.5	0.5	1.0%	-21.8	-30.6%
Unemployment rate (rate)	7.9%	5.2%	5.3%	0.1%		-2.6%	
Participation rate (rate)	70.9%	72.3%	71.8%	-0.5%		0.9%	
Employment rate (rate)	65.3%	68.5%	68.0%	-0.5%		2.7%	

## CALGARY CMA

**Table 14-10-0378-01 (282-0128) Labour force survey estimates (LFS), by census metropolitan area based on 2011 census boundaries, 3-month moving average, unadjusted for seasonality, monthly (persons unless otherwise noted)**

	October 2021	September 2022	October 2022	# Change September 2022 - October 2022	% Change September 2022 - October 2022	# Change October 2021 - October 2022	% Change October 2021 - October 2022
Population (x 1,000)	1,270.5	1,302.4	1,306.6	4.2	0.3%	36.1	2.8%
Labour force (x 1,000)	910.8	954.1	950.0	-4.1	-0.4%	39.2	4.3%
Employment (x 1,000)	834.7	897.1	895.6	-1.5	-0.2%	60.9	7.3%
Full-time employment (x 1,000)	681.1	762.0	747.3	-14.7	-1.9%	66.2	9.7%
Part-time employment (x 1,000)	153.6	135.1	148.3	13.2	9.8%	-5.3	-3.5%
Unemployment (x 1,000)	76.1	57.0	54.3	-2.7	-4.7%	-21.8	-28.6%
Not in labour force (x 1,000)	359.7	348.3	356.6	8.3	2.4%	-3.1	-0.9%
Unemployment rate (rate)	8.4%	6.0%	5.7%	-0.3%		-2.7%	
Participation rate (rate)	71.7%	73.3%	72.7%	-0.6%		1.0%	
Employment rate (rate)	65.7%	68.9%	68.5%	-0.4%		2.8%	

## CALGARY CMA

**Table: 14-10-0397-01 (282-0130) Labour force survey estimates (LFS), employment by census metropolitan area based on 2011 census boundaries and North American Industry Classification System (NAICS), 3-month moving average, unadjusted for seasonality, monthly (persons x 1,000)**

	October 2021	September 2022	October 2022	# Change September 2022 - October 2022	% Change September 2022 - October 2022	# Change October 2021 - October 2022	% Change October 2021 - October 2022
Total Employed - All Industries	834.7	897.1	895.6	-1.5	-0.2%	60.9	7.3%
Goods-Producing Sector	180.7	175.3	170.9	-4.4	-2.5%	-9.8	-5.4%
Agriculture	1.6	3.7	3.7	0.0	0.0%	2.1	131.3%
Forestry, Fishing, Mining, Quarrying, Oil and Gas	48.5	42.2	44.6	2.4	5.7%	-3.9	-8.0%
Utilities	8.7	11.4	11.1	-0.3	-2.6%	2.4	27.6%
Construction	78.6	80.1	75.3	-4.8	-6.0%	-3.3	-4.2%
Manufacturing	43.3	37.8	36.3	-1.5	-4.0%	-7.0	-16.2%
Services-Producing Sector	654.0	721.8	724.7	2.9	0.4%	70.7	10.8%
Wholesale & Retail Trade	120.1	139.3	141.0	1.7	1.2%	20.9	17.4%
Transportation and Warehousing	56.8	61.0	61.4	0.4	0.7%	4.6	8.1%
Finance, Insurance, Real Estate and Leasing	55.7	55.4	54.2	-1.2	-2.2%	-1.5	-2.7%
Professional, Scientific and Technical Services	98.8	120.2	118.5	-1.7	-1.4%	19.7	19.9%
Business, Building and Other Support Services	28.5	25.2	25.1	-0.1	-0.4%	-3.4	-11.9%
Educational Services	61.3	55.6	59.6	4.0	7.2%	-1.7	-2.8%
Health Care and Social Assistance	109.5	108.0	116.2	8.2	7.6%	6.7	6.1%
Information, Culture and Recreation	32.3	41.7	37.6	-4.1	-9.8%	5.3	16.4%
Accommodation and Food Services	42.7	52.5	51.7	-0.8	-1.5%	9.0	21.1%
Other Services	26.5	25.6	25.5	-0.1	-0.4%	-1.0	-3.8%
Public Administration	21.8	37.4	33.9	-3.5	-9.4%	12.1	55.5%

## Province of Alberta

**Table: 14-10-0287-01 (282-0087) Labour force survey estimates (LFS), by sex and age group, seasonally adjusted, monthly (persons unless otherwise noted)**

	October 2021	September 2022	October 2022	# Change September 2022 - October 2022	% Change September 2022 - October 2022	# Change October 2021 - October 2022	% Change October 2021 - October 2022
Population (x 1,000)	3,556.1	3,637.8	3,648.8	11.0	0.3%	92.7	2.6%
Labour force (x 1,000)	2,453.5	2,509.4	2,509.1	-0.3	-0.01%	55.6	2.3%
Employment (x 1,000)	2,262.1	2,372.3	2,379.2	6.9	0.3%	117.1	5.2%
Employment full-time (x 1,000)	1,850.4	1,916.7	1,930.7	14.0	0.7%	80.3	4.3%
Employment part-time (x 1,000)	411.7	455.7	448.5	-7.2	-1.6%	36.8	8.9%
Unemployment (x 1,000)	191.4	137.0	129.9	-7.1	-5.2%	-61.5	-32.1%
Unemployment rate (rate)	7.8%	5.5%	5.2%	-0.3%		-2.6%	
Participation rate (rate)	69.0%	69.0%	68.8%	-0.2%		-0.2%	
Employment rate (rate)	63.6%	65.2%	65.2%	0.0%		1.6%	

## Province of Alberta

**Table: 14-10-0355-01 (282-0088) Labour force survey estimates (LFS), employment by North American Industry Classification System (NAICS), seasonally adjusted, monthly (persons x 1,000)**

	October 2021	September 2022	October 2022	# Change September 2022 - October 2022	% Change September 2022 - October 2022	# Change October 2021 - October 2022	% Change October 2021 - October 2022
Total Employed - All Industries	2,262.1	2,372.3	2,379.2	6.9	0.3%	117.1	5.2%
Goods-Producing Sector	528.0	559.6	560.9	1.3	0.2%	32.9	6.2%
Agriculture	33.7	41.2	43.0	1.8	4.4%	9.3	27.6%
Forestry, Fishing, Mining, Quarrying, Oil and Gas	141.6	142.8	140.6	-2.2	-1.5%	-1.0	-0.7%
Utilities	18.3	23.6	21.5	-2.1	-8.9%	3.2	17.5%
Construction	214.7	226.6	230.0	3.4	1.5%	15.3	7.1%
Manufacturing	119.6	125.2	125.8	0.6	0.5%	6.2	5.2%
Services-Producing Sector	1,734.1	1,812.8	1,818.3	5.5	0.3%	84.2	4.9%
Wholesale & Retail Trade	353.1	373.1	377.0	3.9	1.0%	23.9	6.8%
Transportation and Warehousing	135.6	132.9	130.5	-2.4	-1.8%	-5.1	-3.8%
Finance, Insurance, Real Estate and Leasing	121.2	122.3	119.0	-3.3	-2.7%	-2.2	-1.8%
Professional, Scientific and Technical Services	191.1	222.2	224.5	2.3	1.0%	33.4	17.5%
Business, Building and Other Support Services	72.3	72.6	70.8	-1.8	-2.5%	-1.5	-2.1%
Educational Services	171.2	159.4	159.9	0.5	0.3%	-11.3	-6.6%
Health Care and Social Assistance	301.1	311.7	312.4	0.7	0.2%	11.3	3.8%
Information, Culture and Recreation	68.8	76.4	77.2	0.8	1.0%	8.4	12.2%
Accommodation and Food Services	120.3	133.6	136.0	2.4	1.8%	15.7	13.1%
Other Services	91.7	104.5	105.2	0.7	0.7%	13.5	14.7%
Public Administration	107.9	104.2	105.9	1.7	1.6%	-2.0	-1.9%

## CANADA

**Table: 14-10-0287-01 (282-0087) Labour force survey estimates (LFS), by sex and age group, seasonally adjusted, monthly (persons unless otherwise noted)**

	October 2021	September 2022	October 2022	# Change September 2022 - October 2022	% Change September 2022 - October 2022	# Change October 2021 - October 2022	% Change October 2021 - October 2022
Population (x 1,000)	31,430.0	31,875.4	31,927.0	51.6	0.2%	497.0	1.6%
Labour force (x 1,000)	20,537.4	20,619.5	20,729.6	110.1	0.53%	192.2	0.9%
Employment (x 1,000)	19,141.8	19,547.9	19,656.2	108.3	0.554%	514.4	2.7%
Employment full-time (x 1,000)	15,591.1	15,944.0	16,063.3	119.3	0.7%	472.2	3.0%
Employment part-time (x 1,000)	3,550.7	3,603.9	3,592.9	-11.0	-0.3%	42.2	1.2%
Unemployment (x 1,000)	1,395.7	1,071.6	1,073.4	1.8	0.2%	-322.3	-23.1%
Unemployment rate (rate)	6.8%	5.2%	5.2%	0.0%		-1.6%	
Participation rate (rate)	65.3%	64.7%	64.9%	0.2%		-0.4%	
Employment rate (rate)	60.9%	61.3%	61.6%	0.3%		0.7%	

## CANADA

**Table: 14-10-0355-01 (282-0088) Labour force survey estimates (LFS), employment by North American Industry Classification System (NAICS), seasonally adjusted, monthly (persons x 1,000)**

	October 2021	September 2022	October 2022	# Change September 2022 - October 2022	% Change September 2022 - October 2022	# Change October 2021 - October 2022	% Change October 2021 - October 2022
Total Employed - All Industries	19,141.8	19,547.9	19,656.2	108.3	0.6%	514.4	2.7%
Goods-Producing Sector	3,862.6	3,982.0	4,027.1	45.1	1.1%	164.5	4.3%
Agriculture	241.0	258.6	262.4	3.8	1.5%	21.4	8.9%
Forestry, Fishing, Mining, Quarrying, Oil and Gas	321.9	339.5	332.7	-6.8	-2.0%	10.8	3.4%
Utilities	141.5	154.0	153.9	-0.1	-0.1%	12.4	8.8%
Construction	1,429.5	1,509.4	1,534.0	24.6	1.6%	104.5	7.3%
Manufacturing	1,728.7	1,720.4	1,744.2	23.8	1.4%	15.5	0.9%
Services-Producing Sector	15,279.2	15,565.9	15,629.1	63.2	0.4%	349.9	2.3%
Wholesale and retail trade	2,915.3	2,907.3	2,887.1	-20.2	-0.7%	-28.2	-1.0%
Transportation and Warehousing	1,008.4	987.1	985.1	-2.0	-0.2%	-23.3	-2.3%
Finance, Insurance, Real Estate and Leasing	1,322.1	1,341.4	1,338.2	-3.2	-0.2%	16.1	1.2%
Professional, Scientific and Technical Services	1,690.0	1,818.0	1,835.9	17.9	1.0%	145.9	8.6%
Business, Building and Other Support Services	702.5	708.2	714.5	6.3	0.9%	12.0	1.7%
Educational Services	1,469.4	1,476.0	1,481.3	5.3	0.4%	11.9	0.8%
Health Care and Social Assistance	2,567.0	2,620.2	2,626.9	6.7	0.3%	59.9	2.3%
Information, Culture and Recreation	764.5	797.1	799.5	2.4	0.3%	35.0	4.6%
Accommodation and Food Services	1,012.1	1,059.0	1,077.3	18.3	1.7%	65.2	6.4%
Other Services	731.2	728.4	745.9	17.5	2.4%	14.7	2.0%
Public Administration	1,096.6	1,123.2	1,137.7	14.5	1.3%	41.1	3.7%

## Unemployment Rates for Key Markets

	October 2021	September 2022	October 2022
<b>Calgary</b>	7.9%	5.2%	5.3%
<b>Alberta</b>	7.8%	5.5%	5.2%
<b>Canada</b>	6.8%	5.2%	5.2%
<b>Montreal</b>	6.5%	4.9%	4.7%
<b>Ottawa</b>	5.0%	4.1%	4.2%
<b>Toronto</b>	8.4%	4.1%	4.2%
<b>Edmonton</b>	7.9%	4.8%	5.2%
<b>Vancouver</b>	6.3%	4.5%	4.4%
<b>Winnipeg</b>	6.2%	4.6%	5.0%
<b>Regina</b>	6.1%	4.3%	5.0%
<b>Saskatoon</b>	7.0%	4.2%	4.1%
<b>Wood Buffalo</b>			



# Facts & Figures

**Highest Unemployment Rate during 2008-2010 downturn:** 7.5% in January 2010

**Highest Unemployment Rate during 1992-1996 downturn:** 10.8% in July 1993  
Number of additional jobs we would need to lose to reach this level: 51,836  
(or amount labour force would need to grow by with no additional new jobs)

**Highest Unemployment Rate during 1982-1985 downturn:** 13.2% in March 1983  
Number of additional jobs we would need to lose to reach this level: 74,356  
(or amount labour force would need to grow by with no additional new jobs)

## The last time Calgary had negative employment growth:

Between November 2009 and May 2010 Calgary lost 12,900 jobs.  
Between November 2008 and July 2009 Calgary lost 27,000 jobs.  
From peak employment in November 2008 to the lowest level reached in May 2010 - 33,400 jobs were lost in Calgary.

Calgary lost a small number of jobs July-August 2012 (2,400), again in March 2013 (3,200), and again (3,300) in February to April 2014.

## Calgary

<b>Number of jobs gained/lost in 2014:</b>	11,300
<b>Number of jobs gained/lost in 2015:</b>	(16,200)
<b>Number of jobs gained/lost December 2014 to June 2016:</b>	(23,100)
<b>Number of jobs gained/lost in 2016:</b>	12,700
<b>Number of jobs gained/lost in 2017:</b>	14,400
<b>Number of jobs gained/lost in 2018:</b>	8,800
<b>Number of jobs gained/lost in 2019:</b>	14,400
<b>Number of jobs gained/lost in 2020:</b>	(5,600)
<b>Number of jobs gained/lost in 2021:</b>	7,100
<b>Number of jobs gained/lost in 2022 (to-date):</b>	60,600

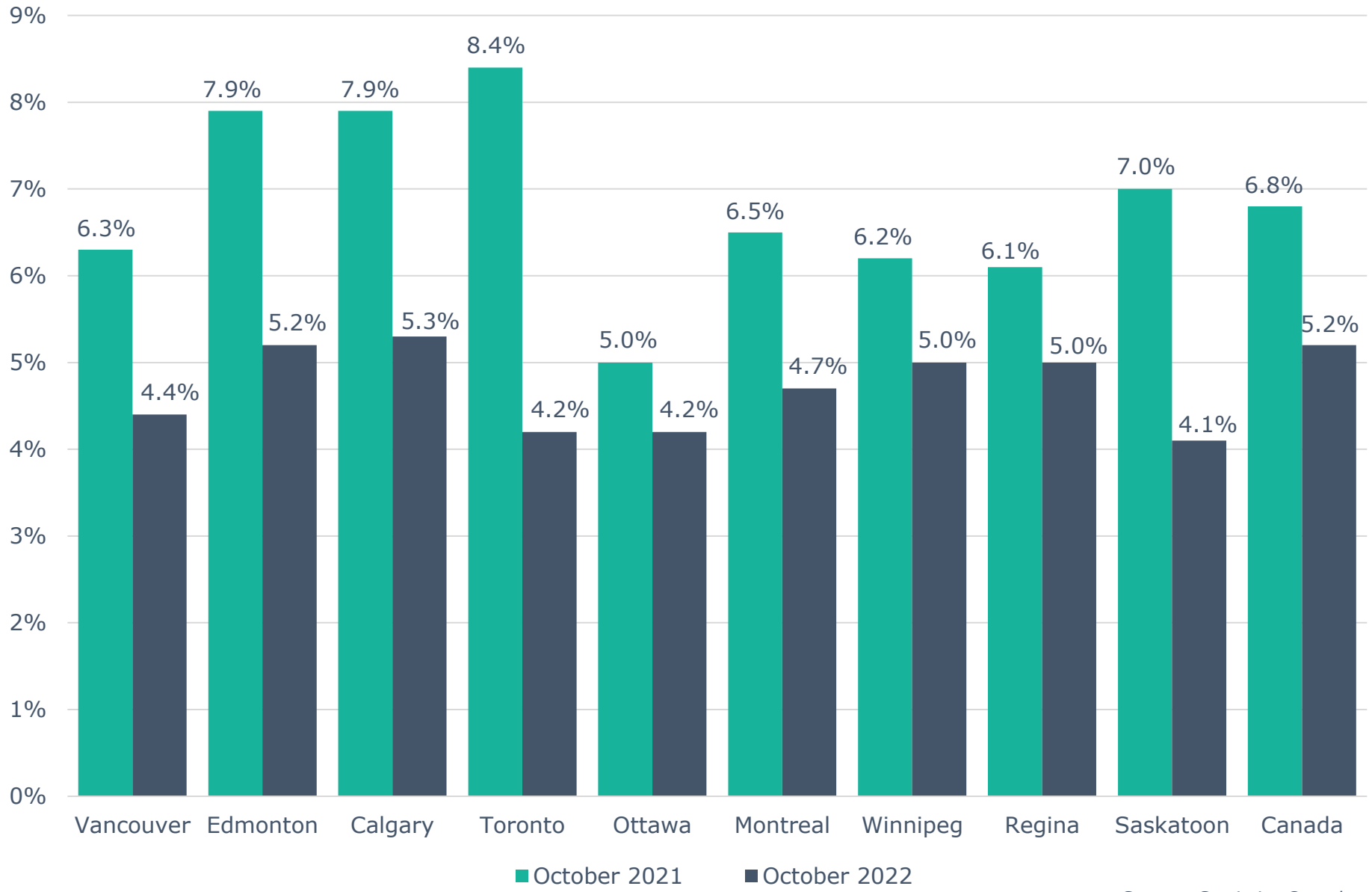
## Alberta

<b>Number of jobs gained/lost in 2014:</b>	46,000
<b>Number of jobs gained/lost in 2015:</b>	(40,100)
<b>Number of jobs gained/lost December 2014 to June 2016:</b>	(73,800)
<b>Number of jobs gained/lost in 2016:</b>	(21,500)
<b>Number of jobs gained/lost in 2017:</b>	57,300
<b>Number of jobs gained/lost in 2018:</b>	21,000
<b>Number of jobs gained/lost in 2019:</b>	(3,700)
<b>Number of jobs gained/lost in 2020:</b>	(109,900)
<b>Number of jobs gained/lost in 2021:</b>	139,200
<b>Number of jobs gained/lost in 2022 (to-date):</b>	79,400

Source: Calgary - Table 14-10-0294-02 (282-0135); Alberta - 14-10-0287-01 (282-0087); Statistics Canada

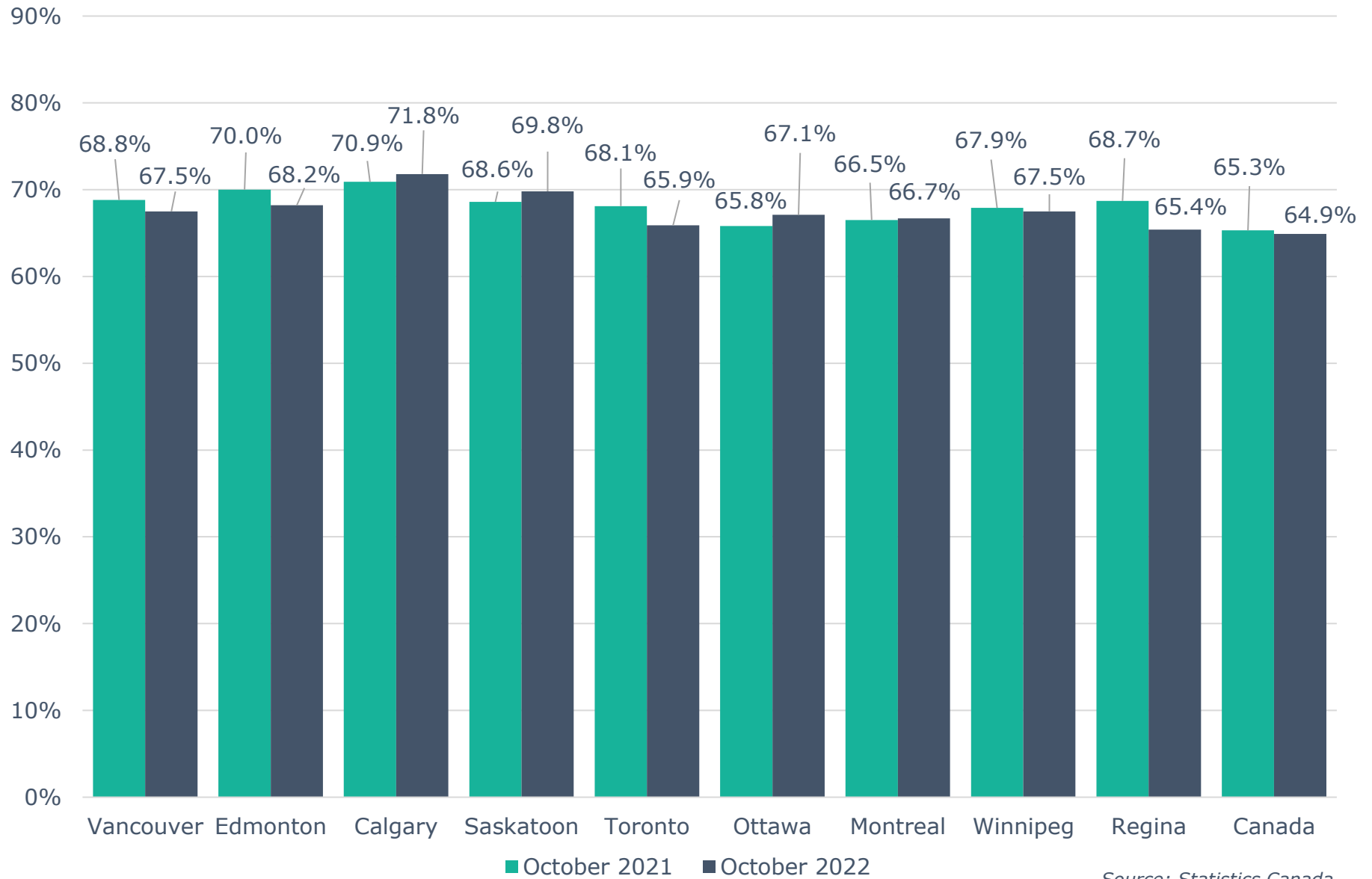
Note: Labour Force Survey, Employment, Seasonally Adjusted

# Unemployment Rate Across Canada



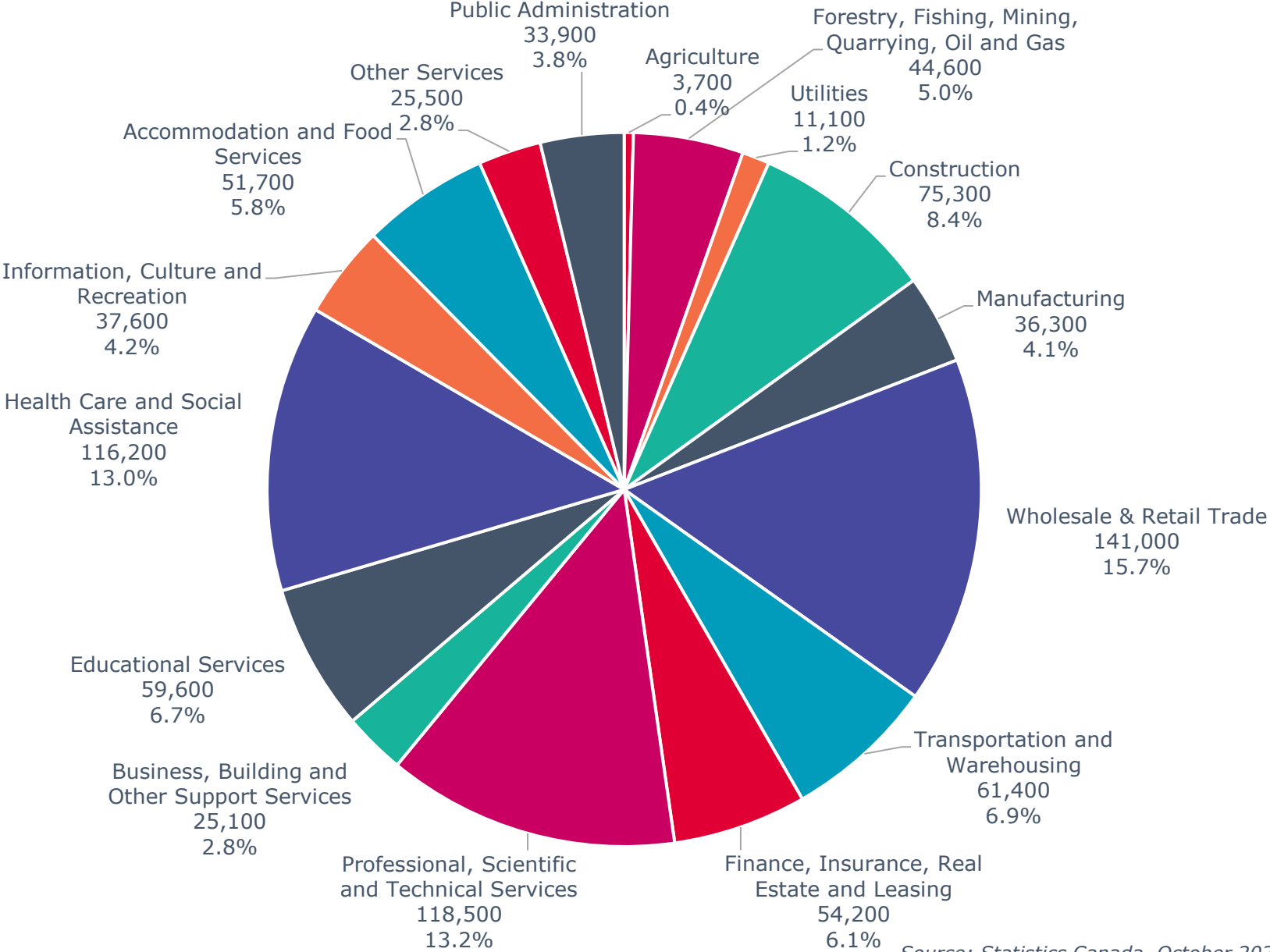
Source: Statistics Canada

# Labour Force Participation Rate Across Canada



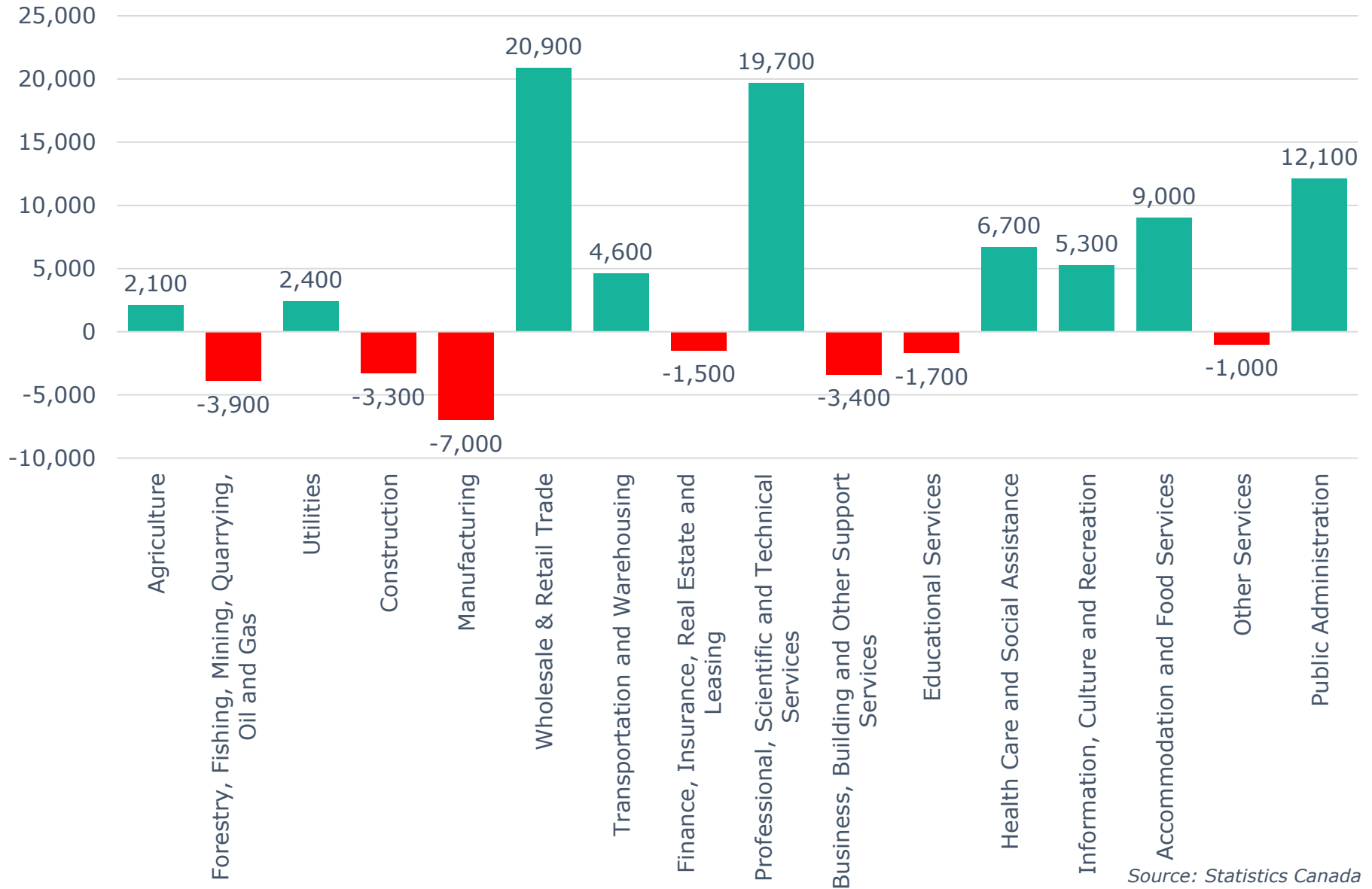
Source: Statistics Canada

# Calgary CMA Employment by Industry (895,600)



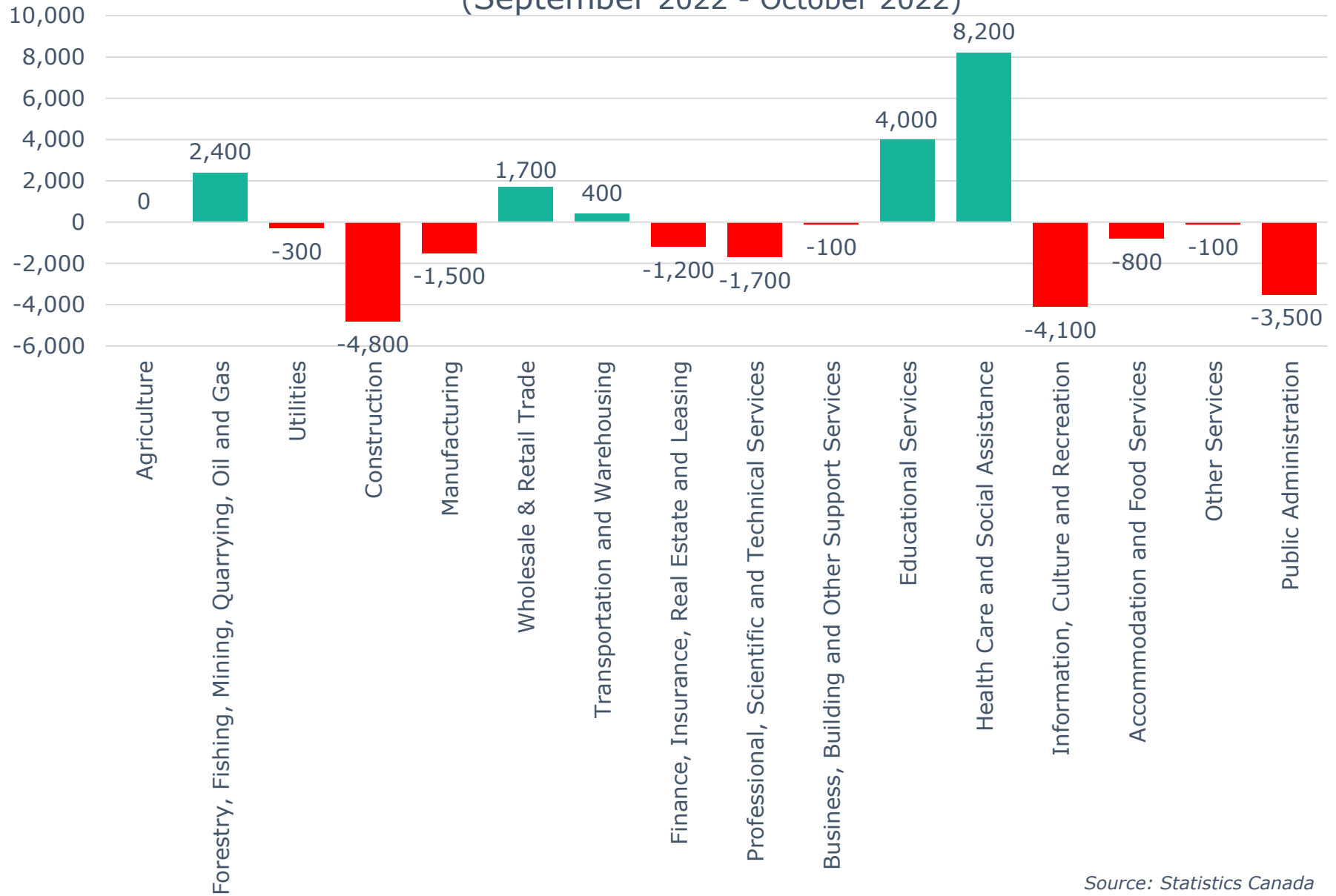
Source: Statistics Canada, October 2022

# Calgary CMA 12-Month Net Jobs Gained or Lost by Industry (October 2022)



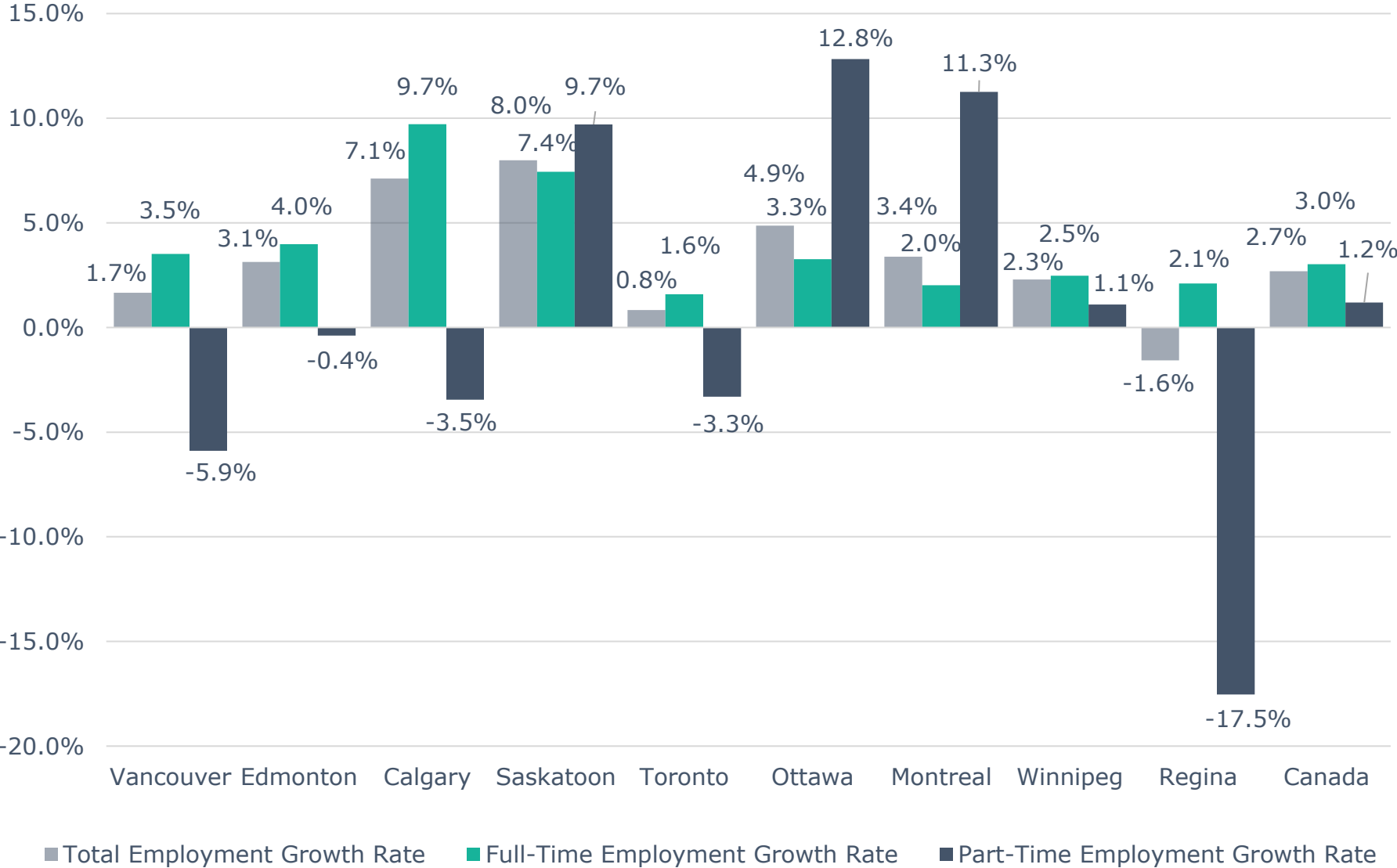
Source: Statistics Canada

## Calgary CMA Monthly Net Jobs Gained or Lost by Industry (September 2022 - October 2022)



Source: Statistics Canada

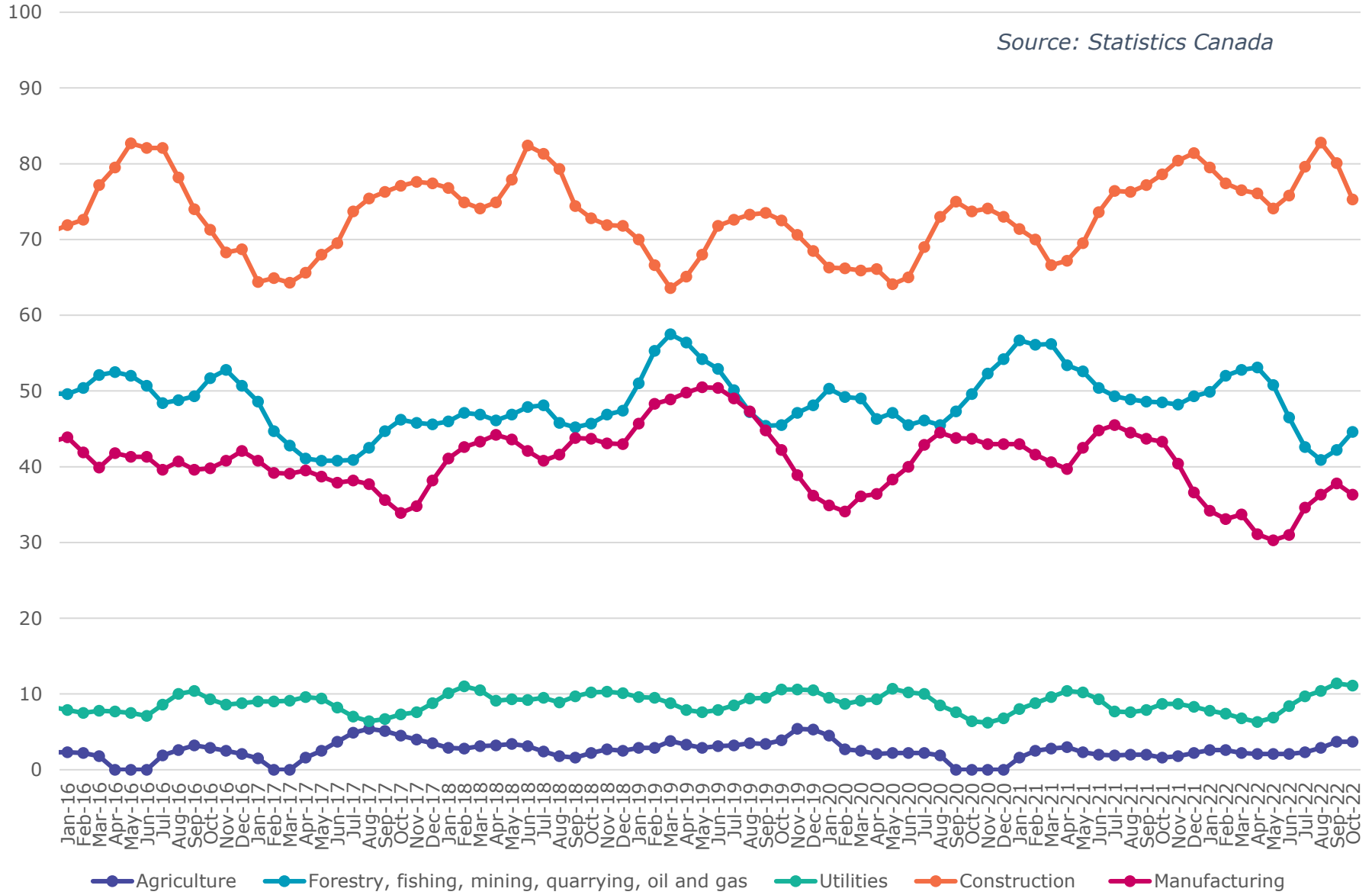
# Annual Employment Growth



Source: Statistics Canada, October 2021 - October 2022

# Calgary CMA Goods Producing Sectors - Number of Employees (In thousands)

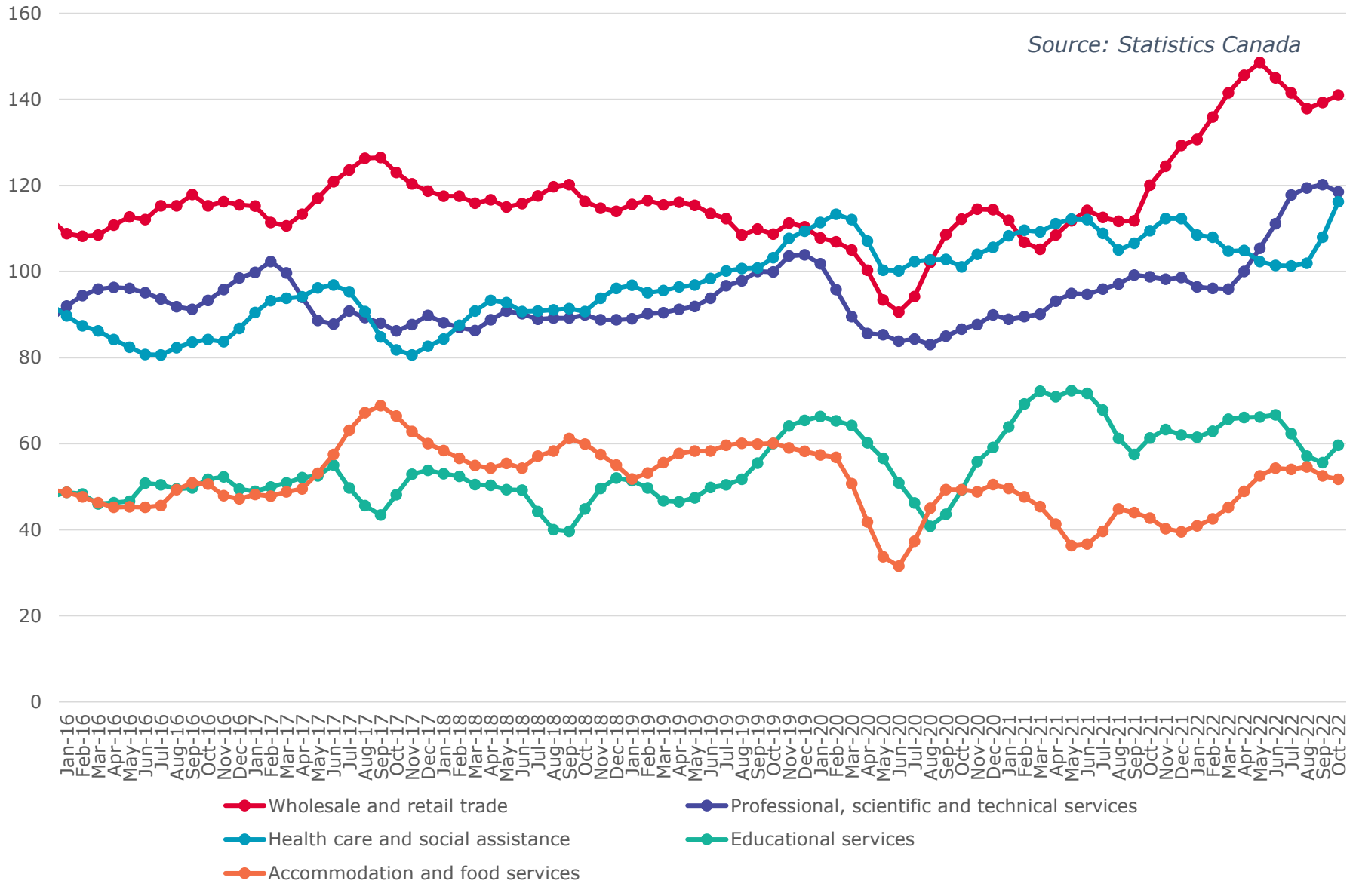
Source: Statistics Canada





# Calgary CMA Largest 5 Services Sector by Number of Employees (In thousands)

Source: Statistics Canada



## Calgary CMA Smallest 6 Service Sectors by Number of Employees (In thousands)

*Source: Statistics Canada*

