



Labour Force Survey Statistics November 2022

CALGARY CMA

Table 14-10-0380-02 (282-0135) Labour force survey estimates (LFS), by census metropolitan area based on 2011 census boundaries, 3-month moving average, seasonally adjusted, monthly (persons unless otherwise noted)							
	November 2021	October 2022	November 2022	# Change October 2022 - November 2022	% Change October 2022 - November 2022	# Change November 2021 - November 2022	% Change November 2021 - November 2022
Population (x 1,000)	1,272.9	1,306.6	1,310.5	3.9	0.3%	37.6	3.0%
Labour force (x 1,000)	900.7	938.3	939.2	0.9	0.1%	38.5	4.3%
Employment (x 1,000)	826.3	888.8	883.3	-5.5	-0.6%	57.0	6.9%
Unemployment (x 1,000)	74.5	49.5	55.9	6.4	12.9%	-18.6	-25.0%
Unemployment rate (rate)	8.3%	5.3%	6.0%	0.7%		-2.3%	
Participation rate (rate)	70.8%	71.8%	71.7%	-0.1%		0.9%	
Employment rate (rate)	64.9%	68.0%	67.4%	-0.6%		2.5%	

CALGARY CMA

Table 14-10-0378-01 (282-0128) Labour force survey estimates (LFS), by census metropolitan area based on 2011 census boundaries, 3-month moving average, unadjusted for seasonality, monthly (persons unless otherwise noted)							
	November 2021	October 2022	November 2022	# Change October 2022 - November 2022	% Change October 2022 - November 2022	# Change November 2021 - November 2022	% Change November 2021 - November 2022
Population (x 1,000)	1,272.9	1,306.6	1,310.5	3.9	0.3%	37.6	3.0%
Labour force (x 1,000)	906.4	950.0	945.0	-5.0	-0.5%	38.6	4.3%
Employment (x 1,000)	834.8	895.6	892.1	-3.5	-0.4%	57.3	6.9%
Full-time employment (x 1,000)	678.1	747.3	737.0	-10.3	-1.4%	58.9	8.7%
Part-time employment (x 1,000)	156.7	148.3	155.1	6.8	4.6%	-1.6	-1.0%
Unemployment (x 1,000)	71.6	54.3	52.9	-1.4	-2.6%	-18.7	-26.1%
Not in labour force (x 1,000)	366.5	356.6	365.5	8.9	2.5%	-1.0	-0.3%
Unemployment rate (rate)	7.9%	5.7%	5.6%	-0.1%		-2.3%	
Participation rate (rate)	71.2%	72.7%	72.1%	-0.6%		0.9%	
Employment rate (rate)	65.6%	68.5%	68.1%	-0.4%		2.5%	

CALGARY CMA

Table: 14-10-0397-01 (282-0130) Labour force survey estimates (LFS), employment by census metropolitan area based on 2011 census boundaries and North American Industry Classification System (NAICS), 3-month moving average, unadjusted for seasonality, monthly (persons x 1,000)

	November 2021	October 2022	November 2022	# Change October 2022 - November 2022	% Change October 2022 - November 2022	# Change November 2021 - November 2022	% Change November 2021 - November 2022
Total Employed - All Industries	834.8	895.6	892.1	-3.5	-0.4%	57.3	6.9%
Goods-Producing Sector	179.6	170.9	166.9	-4.0	-2.3%	-12.7	-7.1%
Agriculture	1.8	3.7	3.4	-0.3	-8.1%	1.6	88.9%
Forestry, Fishing, Mining, Quarrying, Oil and Gas	48.2	44.6	47.2	2.6	5.8%	-1.0	-2.1%
Utilities	8.7	11.1	9.7	-1.4	-12.6%	1.0	11.5%
Construction	80.4	75.3	72.0	-3.3	-4.4%	-8.4	-10.4%
Manufacturing	40.4	36.3	34.6	-1.7	-4.7%	-5.8	-14.4%
Services-Producing Sector	655.2	724.7	725.2	0.5	0.1%	70.0	10.7%
Wholesale & Retail Trade	124.5	141.0	139.8	-1.2	-0.9%	15.3	12.3%
Transportation and Warehousing	57.4	61.4	62.0	0.6	1.0%	4.6	8.0%
Finance, Insurance, Real Estate and Leasing	54.7	54.2	53.5	-0.7	-1.3%	-1.2	-2.2%
Professional, Scientific and Technical Services	98.2	118.5	118.1	-0.4	-0.3%	19.9	20.3%
Business, Building and Other Support Services	27.6	25.1	24.8	-0.3	-1.2%	-2.8	-10.1%
Educational Services	63.3	59.6	64.1	4.5	7.6%	0.8	1.3%
Health Care and Social Assistance	112.3	116.2	124.0	7.8	6.7%	11.7	10.4%
Information, Culture and Recreation	29.8	37.6	32.5	-5.1	-13.6%	2.7	9.1%
Accommodation and Food Services	40.2	51.7	49.5	-2.2	-4.3%	9.3	23.1%
Other Services	24.1	25.5	26.5	1.0	3.9%	2.4	10.0%
Public Administration	23.1	33.9	30.4	-3.5	-10.3%	7.3	31.6%

Province of Alberta

Table: 14-10-0287-01 (282-0087) Labour force survey estimates (LFS), by sex and age group, seasonally adjusted, monthly (persons unless otherwise noted)

	November 2021	October 2022	November 2022	# Change October 2022 - November 2022	% Change October 2022 - November 2022	# Change November 2021 - November 2022	% Change November 2021 - November 2022
Population (x 1,000)	3,562.1	3,648.8	3,657.2	8.4	0.2%	95.1	2.7%
Labour force (x 1,000)	2,468.9	2,509.1	2,509.8	0.7	0.03%	40.9	1.7%
Employment (x 1,000)	2,281.7	2,379.2	2,364.1	-15.1	-0.6%	82.4	3.6%
Employment full-time (x 1,000)	1,850.5	1,930.7	1,920.7	-10.0	-0.5%	70.2	3.8%
Employment part-time (x 1,000)	431.3	448.5	443.4	-5.1	-1.1%	12.1	2.8%
Unemployment (x 1,000)	187.2	129.9	145.7	15.8	12.2%	-41.5	-22.2%
Unemployment rate (rate)	7.6%	5.2%	5.8%	0.6%		-1.8%	
Participation rate (rate)	69.3%	68.8%	68.6%	-0.2%		-0.7%	
Employment rate (rate)	64.1%	65.2%	64.6%	-0.6%		0.5%	

Province of Alberta

Table: 14-10-0355-01 (282-0088) Labour force survey estimates (LFS), employment by North American Industry Classification System (NAICS), seasonally adjusted, monthly (persons x 1,000)

	November 2021	October 2022	November 2022	# Change October 2022 - November 2022	% Change October 2022 - November 2022	# Change November 2021 - November 2022	% Change November 2021 - November 2022
Total Employed - All Industries	2,281.7	2,379.2	2,364.1	-15.1	-0.6%	82.4	3.6%
Goods-Producing Sector	531.4	560.9	558.1	-2.8	-0.5%	26.7	5.0%
Agriculture	33.5	43.0	45.2	2.2	5.1%	11.7	34.9%
Forestry, Fishing, Mining, Quarrying, Oil and Gas	139.8	140.6	144.9	4.3	3.1%	5.1	3.6%
Utilities	18.7	21.5	18.9	-2.6	-12.1%	0.2	1.1%
Construction	220.3	230.0	217.3	-12.7	-5.5%	-3.0	-1.4%
Manufacturing	119.2	125.8	131.7	5.9	4.7%	12.5	10.5%
Services-Producing Sector	1,750.3	1,818.3	1,806.0	-12.3	-0.7%	55.7	3.2%
Wholesale & Retail Trade	359.7	377.0	360.9	-16.1	-4.3%	1.2	0.3%
Transportation and Warehousing	137.7	130.5	127.1	-3.4	-2.6%	-10.6	-7.7%
Finance, Insurance, Real Estate and Leasing	121.3	119.0	120.8	1.8	1.5%	-0.5	-0.4%
Professional, Scientific and Technical Services	193.2	224.5	224.6	0.1	0.0%	31.4	16.3%
Business, Building and Other Support Services	71.9	70.8	71.2	0.4	0.6%	-0.7	-1.0%
Educational Services	166.8	159.9	163.4	3.5	2.2%	-3.4	-2.0%
Health Care and Social Assistance	304.5	312.4	314.5	2.1	0.7%	10.0	3.3%
Information, Culture and Recreation	68.5	77.2	78.6	1.4	1.8%	10.1	14.7%
Accommodation and Food Services	119.9	136.0	126.2	-9.8	-7.2%	6.3	5.3%
Other Services	99.5	105.2	113.2	8.0	7.6%	13.7	13.8%
Public Administration	107.5	105.9	105.4	-0.5	-0.5%	-2.1	-2.0%

CANADA

Table: 14-10-0287-01 (282-0087) Labour force survey estimates (LFS), by sex and age group, seasonally adjusted, monthly (persons unless otherwise noted)

	November 2021	October 2022	November 2022	# Change October 2022 - November 2022	% Change October 2022 - November 2022	# Change November 2021 - November 2022	% Change November 2021 - November 2022
Population (x 1,000)	31,466.5	31,927.0	31,964.7	37.7	0.1%	498.2	1.6%
Labour force (x 1,000)	20,559.8	20,729.6	20,715.9	-13.7	-0.07%	156.1	0.8%
Employment (x 1,000)	19,297.6	19,656.2	19,666.3	10.1	0.051%	368.7	1.9%
Employment full-time (x 1,000)	15,654.5	16,063.3	16,114.0	50.7	0.3%	459.5	2.9%
Employment part-time (x 1,000)	3,643.2	3,592.9	3,552.3	-40.6	-1.1%	-90.9	-2.5%
Unemployment (x 1,000)	1,262.2	1,073.4	1,049.6	-23.8	-2.2%	-212.6	-16.8%
Unemployment rate (rate)	6.1%	5.2%	5.1%	-0.1%		-1.0%	
Participation rate (rate)	65.3%	64.9%	64.8%	-0.1%		-0.5%	
Employment rate (rate)	61.3%	61.6%	61.5%	-0.1%		0.2%	

CANADA

Table: 14-10-0355-01 (282-0088) Labour force survey estimates (LFS), employment by North American Industry Classification System (NAICS), seasonally adjusted, monthly (persons x 1,000)

	November 2021	October 2022	November 2022	# Change October 2022 - November 2022	% Change October 2022 - November 2022	# Change November 2021 - November 2022	% Change November 2021 - November 2022
Total Employed - All Industries	19,297.6	19,656.2	19,666.3	10.1	0.1%	368.7	1.9%
Goods-Producing Sector	3,882.7	4,027.1	4,017.7	-9.4	-0.2%	135.0	3.5%
Agriculture	237.6	262.4	259.2	-3.2	-1.2%	21.6	9.1%
Forestry, Fishing, Mining, Quarrying, Oil and Gas	318.3	332.7	336.9	4.2	1.3%	18.6	5.8%
Utilities	138.1	153.9	149.7	-4.2	-2.7%	11.6	8.4%
Construction	1,425.1	1,534.0	1,509.3	-24.7	-1.6%	84.2	5.9%
Manufacturing	1,763.6	1,744.2	1,762.7	18.5	1.1%	-0.9	-0.1%
Services-Producing Sector	15,415.0	15,629.1	15,648.7	19.6	0.1%	233.7	1.5%
Wholesale and retail trade	2,941.9	2,887.1	2,863.9	-23.2	-0.8%	-78.0	-2.7%
Transportation and Warehousing	1,023.4	985.1	984.1	-1.0	-0.1%	-39.3	-3.8%
Finance, Insurance, Real Estate and Leasing	1,325.9	1,338.2	1,359.6	21.4	1.6%	33.7	2.5%
Professional, Scientific and Technical Services	1,724.8	1,835.9	1,820.9	-15.0	-0.8%	96.1	5.6%
Business, Building and Other Support Services	707.3	714.5	708.9	-5.6	-0.8%	1.6	0.2%
Educational Services	1,461.7	1,481.3	1,493.7	12.4	0.8%	32.0	2.2%
Health Care and Social Assistance	2,609.9	2,626.9	2,625.4	-1.5	-0.1%	15.5	0.6%
Information, Culture and Recreation	780.0	799.5	815.0	15.5	1.9%	35.0	4.5%
Accommodation and Food Services	1,017.8	1,077.3	1,085.6	8.3	0.8%	67.8	6.7%
Other Services	716.5	745.9	747.6	1.7	0.2%	31.1	4.3%
Public Administration	1,105.8	1,137.7	1,143.8	6.1	0.5%	38.0	3.4%

Unemployment Rates for Key Markets

	November 2021	October 2022	November 2022
Calgary	8.3%	5.3%	6.0%
Alberta	7.6%	5.2%	5.8%
Canada	6.1%	5.2%	5.1%
Montreal	5.8%	4.7%	4.3%
Ottawa	4.6%	4.2%	4.5%
Toronto	7.8%	4.2%	4.5%
Edmonton	7.5%	5.2%	5.5%
Vancouver	6.0%	4.4%	4.4%
Winnipeg	5.7%	5.0%	4.8%
Regina	5.6%	5.0%	4.5%
Saskatoon	6.4%	4.1%	4.0%
Wood Buffalo			

Facts & Figures

Highest Unemployment Rate during 2008-2010 downturn: 7.5% in January 2010

Highest Unemployment Rate during 1992-1996 downturn: 10.8% in July 1993
Number of additional jobs we would need to lose to reach this level: 45,534
(or amount labour force would need to grow by with no additional new jobs)

Highest Unemployment Rate during 1982-1985 downturn: 13.2% in March 1983
Number of additional jobs we would need to lose to reach this level: 68,074
(or amount labour force would need to grow by with no additional new jobs)

The last time Calgary had negative employment growth:

Between November 2009 and May 2010 Calgary lost 12,900 jobs.
Between November 2008 and July 2009 Calgary lost 27,000 jobs.
From peak employment in November 2008 to the lowest level reached in May 2010 - 33,400 jobs were lost in Calgary.

Calgary lost a small number of jobs July-August 2012 (2,400), again in March 2013 (3,200), and again (3,300) in February to April 2014.

Calgary

Number of jobs gained/lost in 2014:	11,300
Number of jobs gained/lost in 2015:	(16,200)
Number of jobs gained/lost December 2014 to June 2016:	(23,100)
Number of jobs gained/lost in 2016:	12,700
Number of jobs gained/lost in 2017:	14,400
Number of jobs gained/lost in 2018:	8,800
Number of jobs gained/lost in 2019:	14,400
Number of jobs gained/lost in 2020:	(5,600)
Number of jobs gained/lost in 2021:	7,100
Number of jobs gained/lost in 2022 (to-date):	55,100

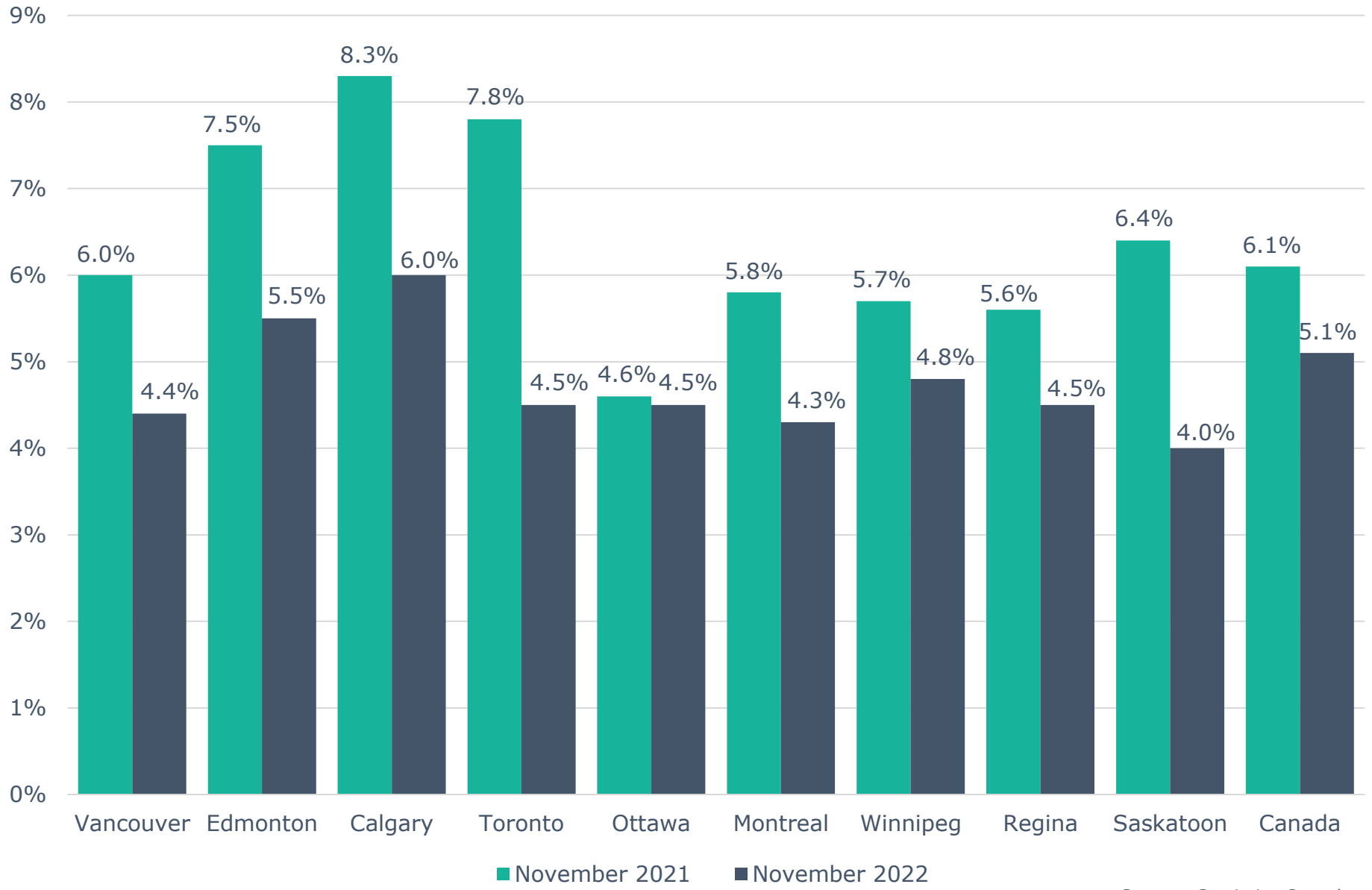
Alberta

Number of jobs gained/lost in 2014:	46,000
Number of jobs gained/lost in 2015:	(40,100)
Number of jobs gained/lost December 2014 to June 2016:	(73,800)
Number of jobs gained/lost in 2016:	(21,500)
Number of jobs gained/lost in 2017:	57,300
Number of jobs gained/lost in 2018:	21,000
Number of jobs gained/lost in 2019:	(3,700)
Number of jobs gained/lost in 2020:	(109,900)
Number of jobs gained/lost in 2021:	139,200
Number of jobs gained/lost in 2022 (to-date):	64,300

Source: Calgary - Table 14-10-0294-02 (282-0135); Alberta - 14-10-0287-01 (282-0087); Statistics Canada

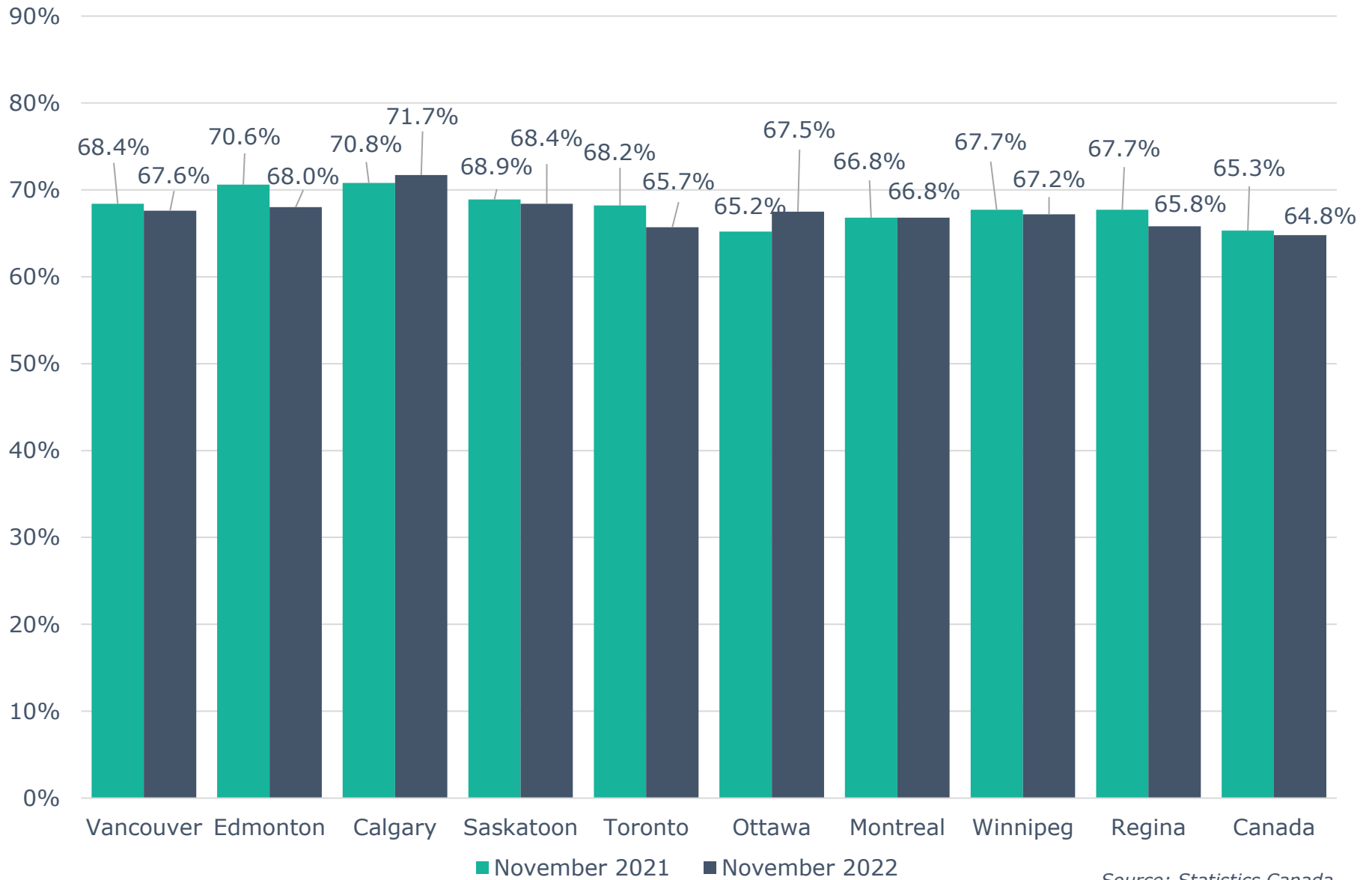
Note: Labour Force Survey, Employment, Seasonally Adjusted

Unemployment Rate Across Canada



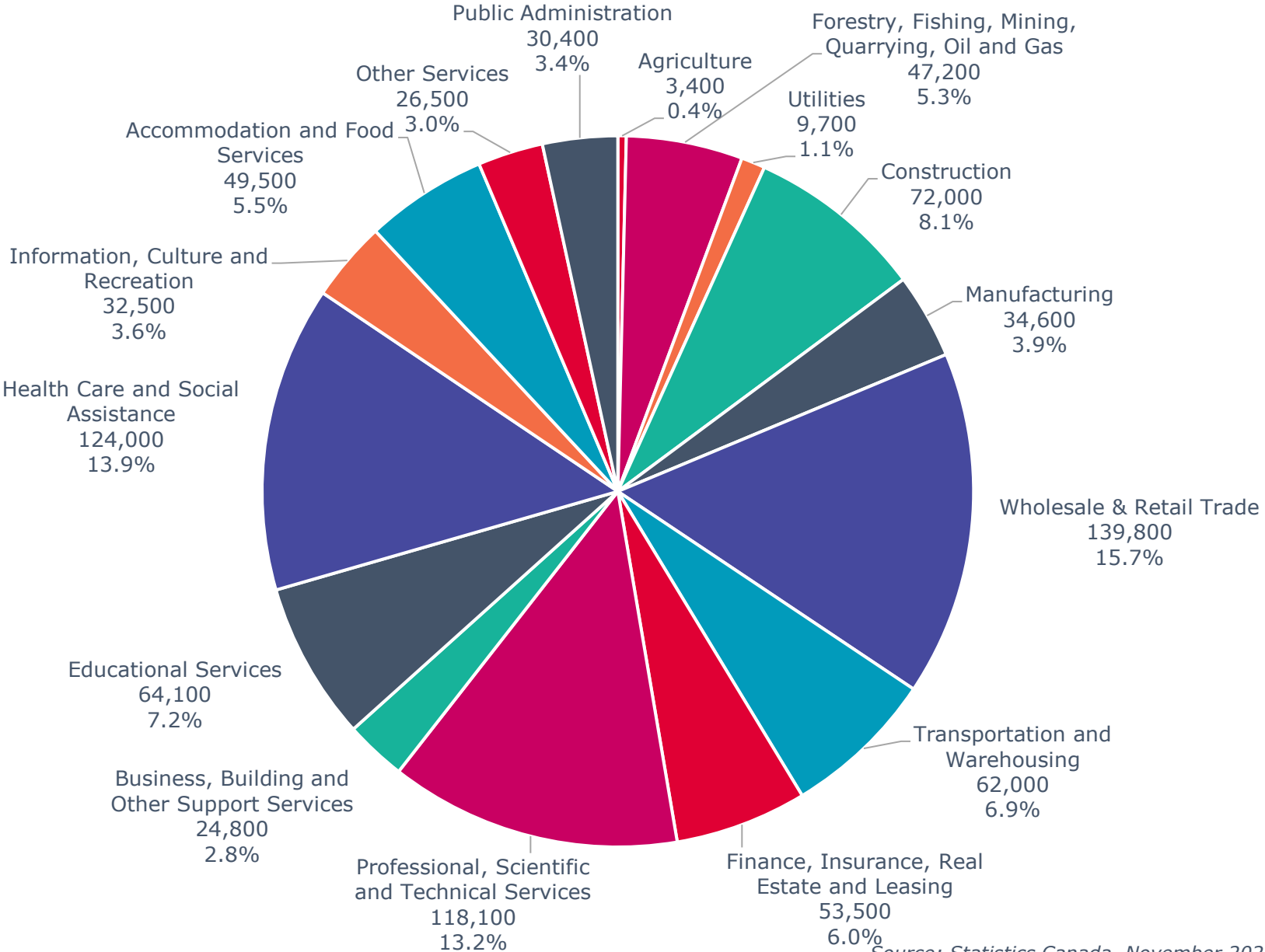
Source: Statistics Canada

Labour Force Participation Rate Across Canada



Source: Statistics Canada

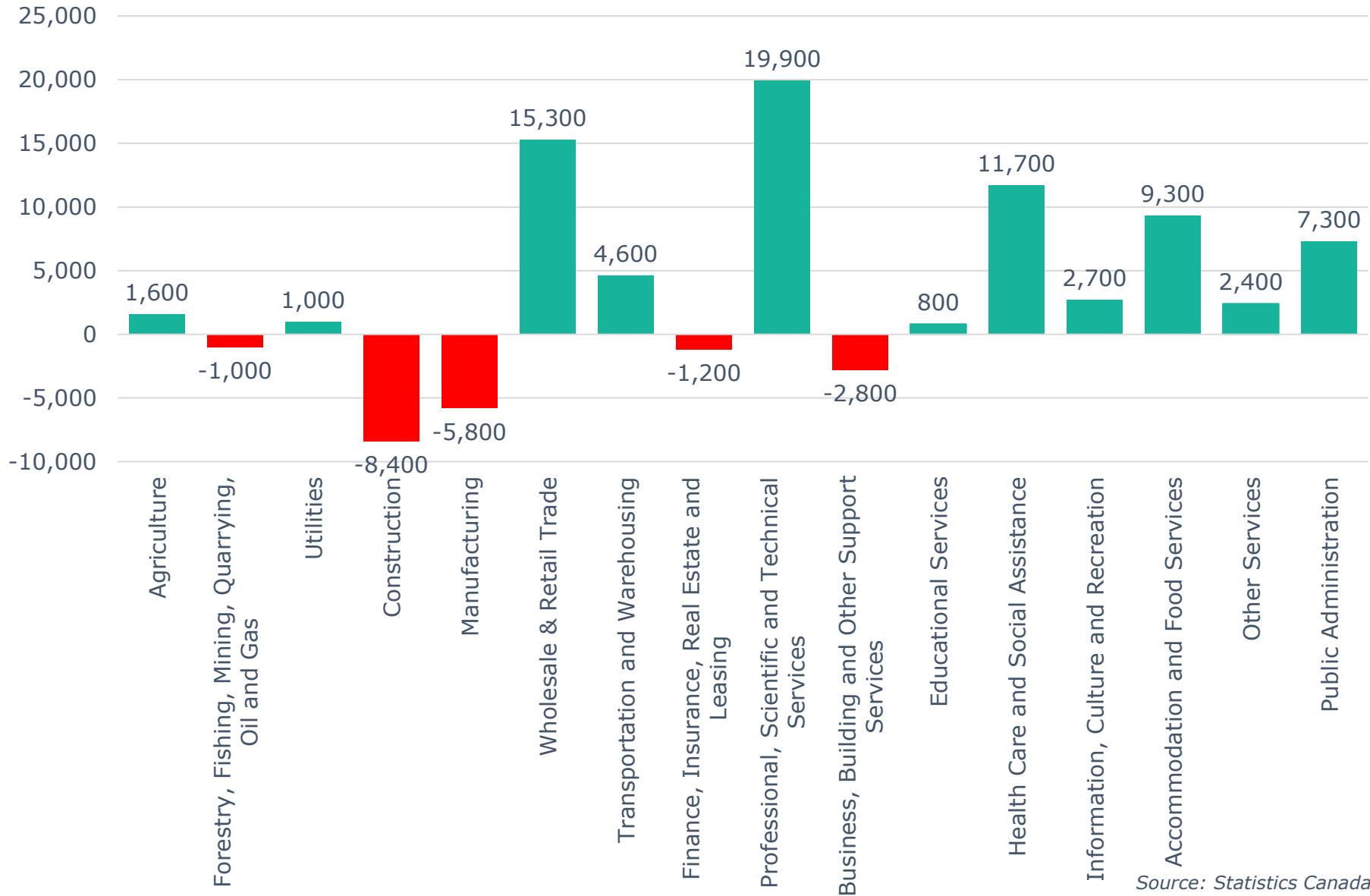
Calgary CMA Employment by Industry (892,100)



Source: Statistics Canada, November 2022

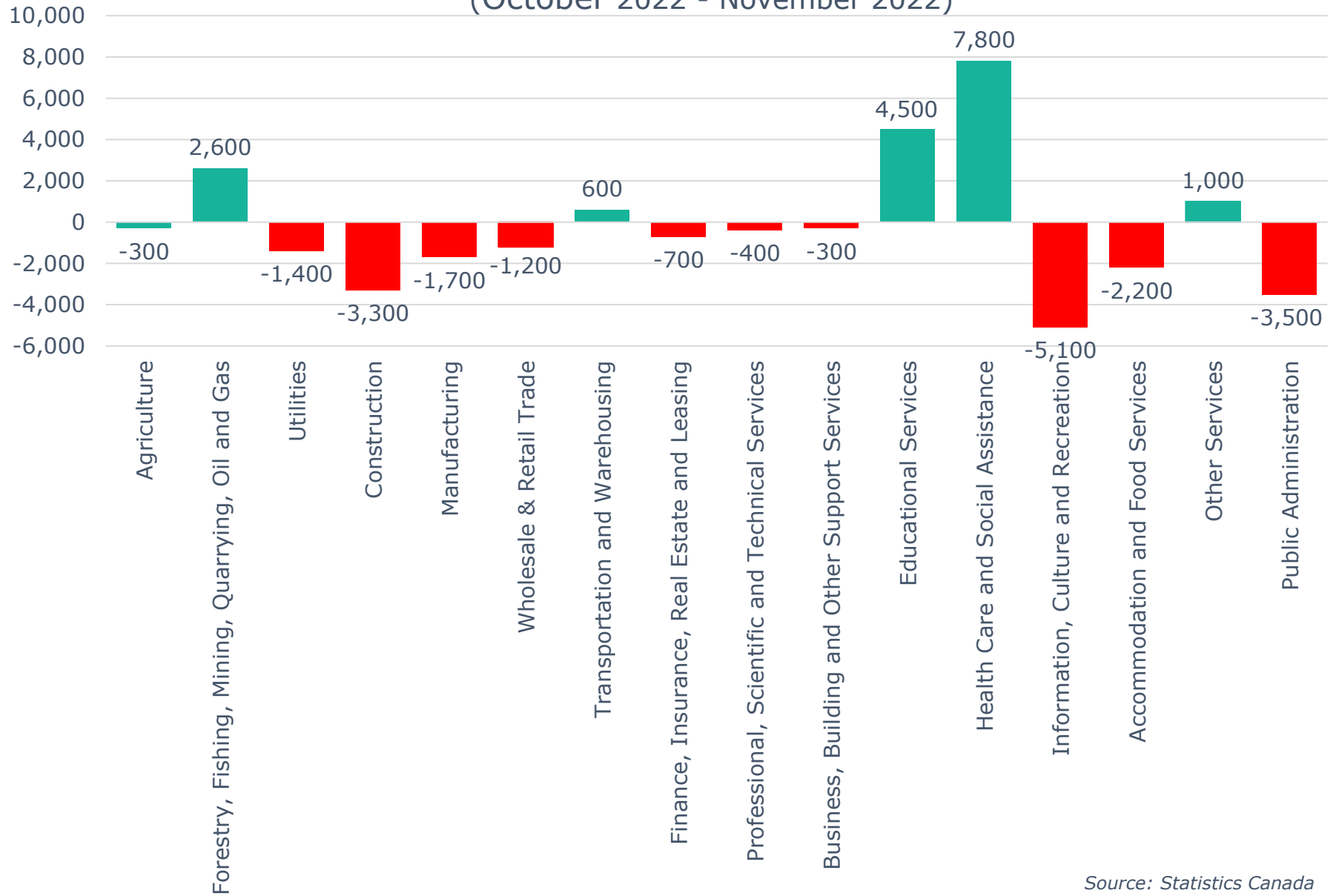
Calgary CMA 12-Month Net Jobs Gained or Lost by Industry

(November 2022)



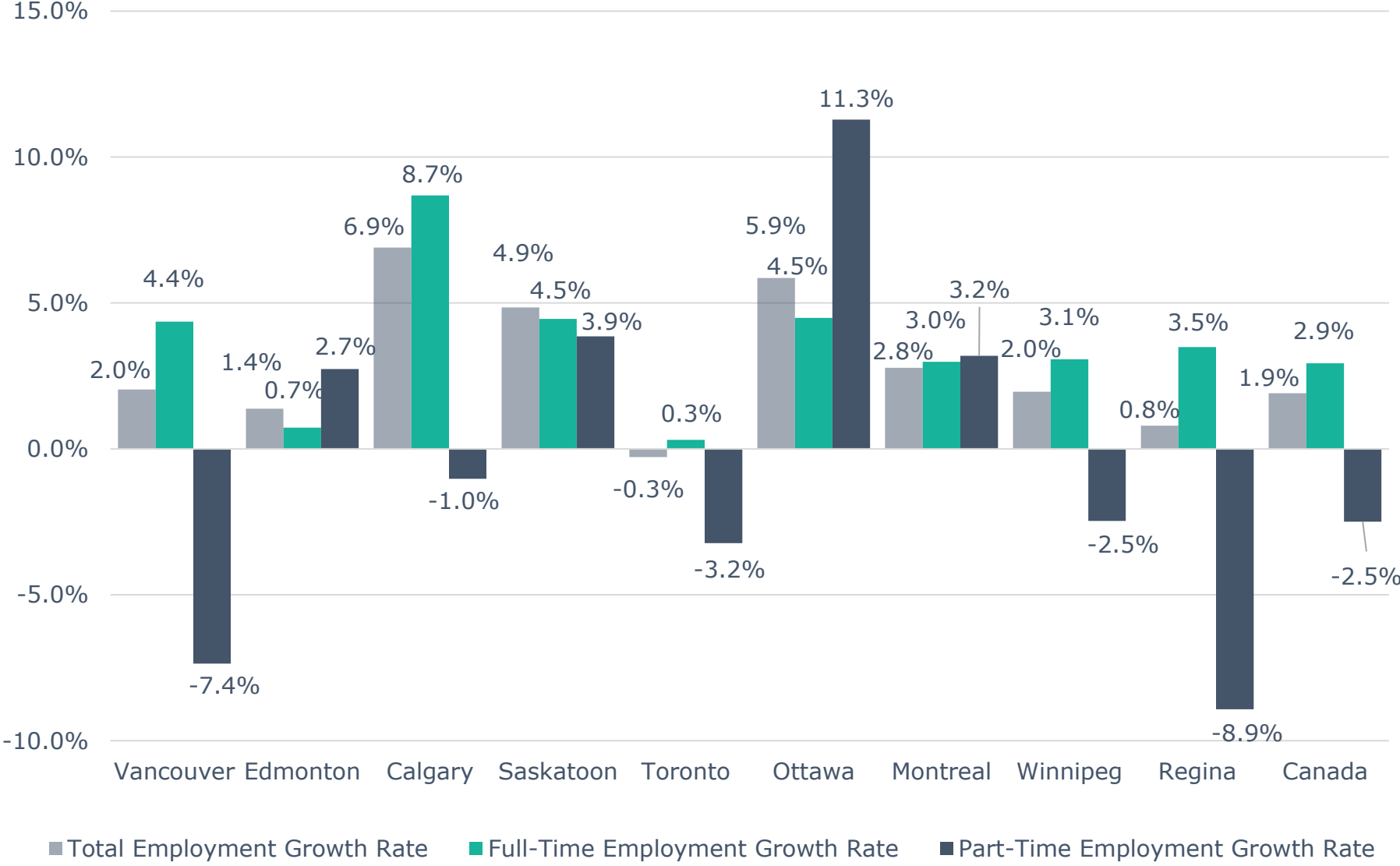
Source: Statistics Canada

Calgary CMA Monthly Net Jobs Gained or Lost by Industry (October 2022 - November 2022)



Source: Statistics Canada

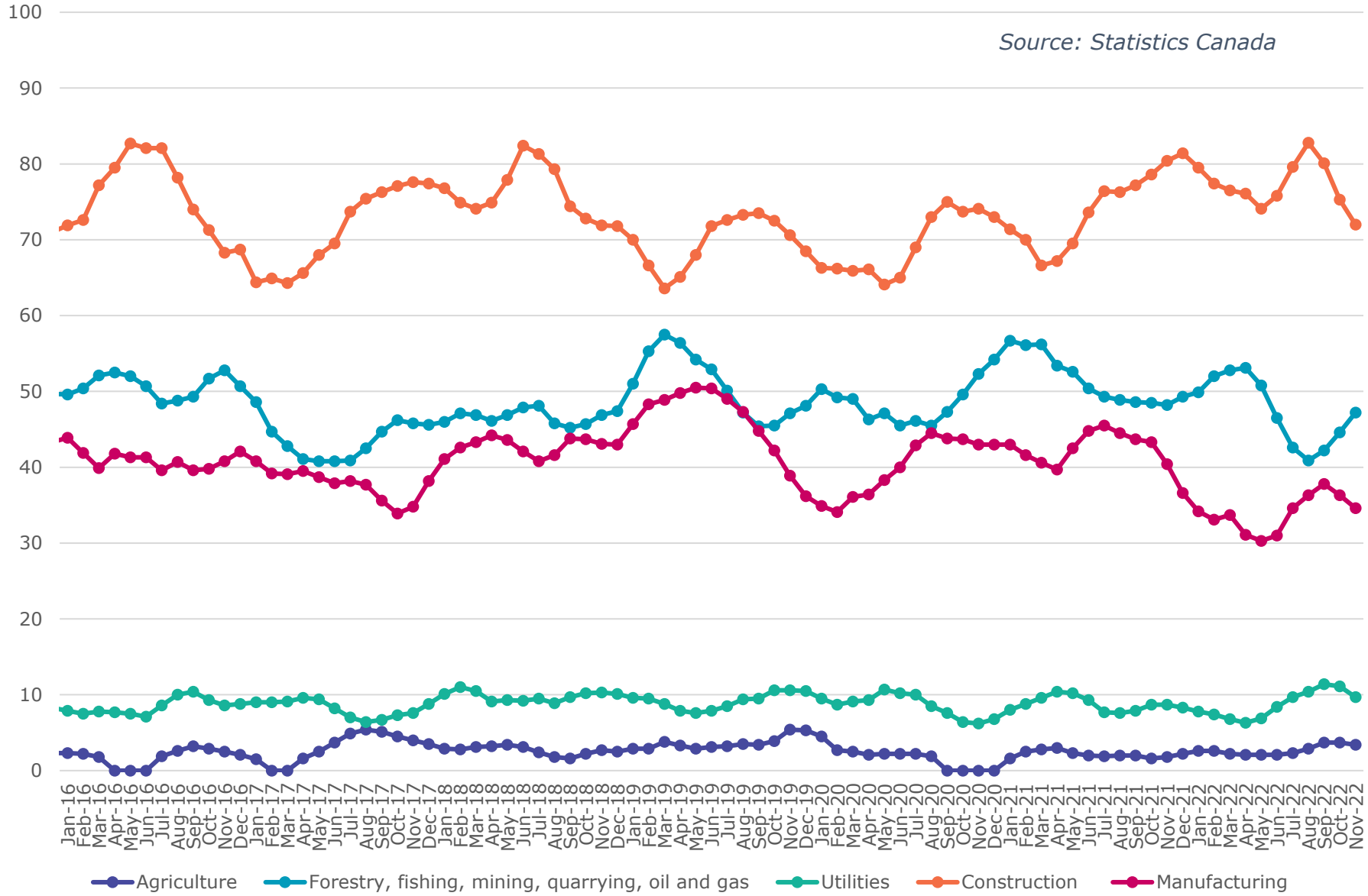
Annual Employment Growth



Source: Statistics Canada, November 2021 - November 2022

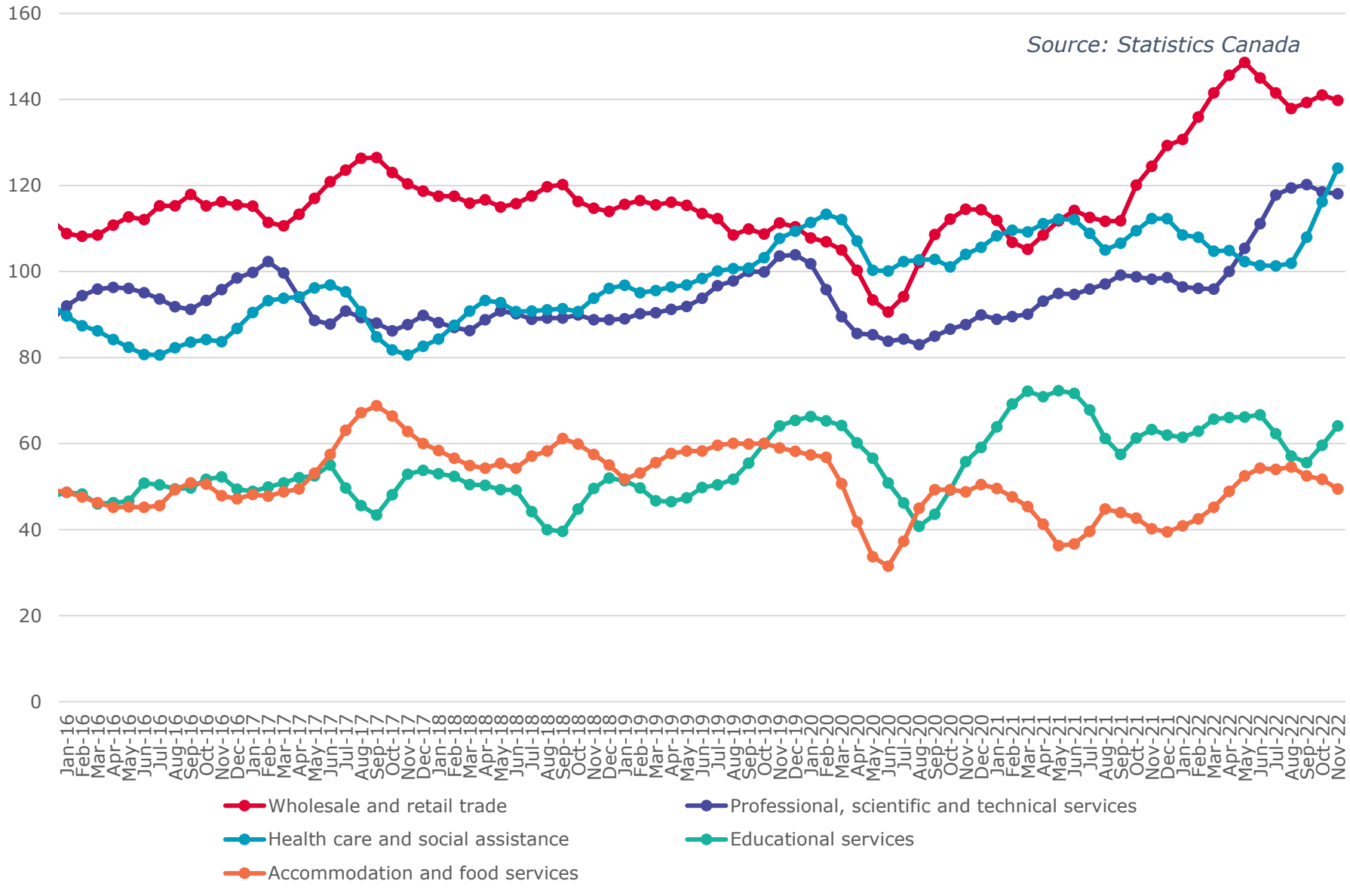
Calgary CMA Goods Producing Sectors - Number of Employees (In thousands)

Source: Statistics Canada



Calgary CMA Largest 5 Services Sector by Number of Employees (In thousands)

Source: Statistics Canada



Calgary CMA Smallest 6 Service Sectors by Number of Employees (In thousands)

Source: Statistics Canada

