

calgary economic
development
be part of the energy™

300

Labour Force Survey Statistics June 2022

CALGARY CMA

Table 14-10-0380-02 (282-0135) Labour force survey estimates (LFS), by census metropolitan area based on 2011 census boundaries, 3-month moving average, seasonally adjusted, monthly (persons unless otherwise noted)

	June 2021	May 2022	June 2022	# Change May 2022 - June 2022	% Change May 2022 - June 2022	# Change June 2021 - June 2022	% Change June 2021 - June 2022
Population (x 1,000)	1,263.8	1,288.8	1,291.9	3.1	0.2%	28.1	2.2%
Labour force (x 1,000)	886.1	922.1	926.6	4.5	0.5%	40.5	4.6%
Employment (x 1,000)	804.4	861.6	875.1	13.5	1.6%	70.7	8.8%
Unemployment (x 1,000)	81.8	60.5	51.4	-9.1	-15.0%	-30.4	-37.2%
Unemployment rate (rate)	9.2%	6.6%	5.5%	-1.1%		-3.7%	
Participation rate (rate)	70.1%	71.5%	71.7%	0.2%		1.6%	
Employment rate (rate)	63.6%	66.9%	67.7%	0.8%		4.1%	

CALGARY CMA

Table 14-10-0378-01 (282-0128) Labour force survey estimates (LFS), by census metropolitan area based on 2011 census boundaries, 3-month moving average, unadjusted for seasonality, monthly (persons unless otherwise noted)

	June 2021	May 2022	June 2022	# Change May 2022 - June 2022	% Change May 2022 - June 2022	# Change June 2021 - June 2022	% Change June 2021 - June 2022
Population (x 1,000)	1,263.8	1,288.8	1,291.9	3.1	0.2%	28.1	2.2%
Labour force (x 1,000)	886.5	917.2	926.0	8.8	1.0%	39.5	4.5%
Employment (x 1,000)	807.2	857.8	875.9	18.1	2.1%	68.7	8.5%
Full-time employment (x 1,000)	663.5	689.2	712.8	23.6	3.4%	49.3	7.4%
Part-time employment (x 1,000)	143.7	168.7	163.1	-5.6	-3.3%	19.4	13.5%
Unemployment (x 1,000)	79.3	59.4	50.1	-9.3	-15.7%	-29.2	-36.8%
Not in labour force (x 1,000)	377.3	371.6	365.9	-5.7	-1.5%	-11.4	-3.0%
Unemployment rate (rate)	8.9%	6.5%	5.4%	-1.1%		-3.5%	
Participation rate (rate)	70.1%	71.2%	71.7%	0.5%		1.6%	
Employment rate (rate)	63.9%	66.6%	67.8%	1.2%		3.9%	

CALGARY CMA

Table: 14-10-0397-01 (282-0130) Labour force survey estimates (LFS), employment by census metropolitan area based on 2011 census boundaries and North American Industry Classification System (NAICS), 3-month moving average, unadjusted for seasonality, monthly (persons x 1,000)

	June 2021	May 2022	June 2022	# Change May 2022 - June 2022	% Change May 2022 - June 2022	# Change June 2021 - June 2022	% Change June 2021 - June 2022
Total Employed - All Industries	807.2	857.8	875.9	18.1	2.1%	68.7	8.5%
Goods-Producing Sector	180.1	164.2	163.8	-0.4	-0.2%	-16.3	-9.1%
Agriculture	2.0	2.1	2.1	0.0	0.0%	0.1	5.0%
Forestry, Fishing, Mining, Quarrying, Oil and Gas	50.4	50.8	46.5	-4.3	-8.5%	-3.9	-7.7%
Utilities	9.3	6.9	8.4	1.5	21.7%	-0.9	-9.7%
Construction	73.6	74.1	75.8	1.7	2.3%	2.2	3.0%
Manufacturing	44.8	30.3	31.0	0.7	2.3%	-13.8	-30.8%
Services-Producing Sector	627.1	693.6	712.1	18.5	2.7%	85.0	13.6%
Wholesale & Retail Trade	114.2	148.6	145.0	-3.6	-2.4%	30.8	27.0%
Transportation and Warehousing	44.9	52.4	57.4	5.0	9.5%	12.5	27.8%
Finance, Insurance, Real Estate and Leasing	49.0	47.5	51.0	3.5	7.4%	2.0	4.1%
Professional, Scientific and Technical Services	94.7	105.4	111.1	5.7	5.4%	16.4	17.3%
Business, Building and Other Support Services	24.2	25.2	25.0	-0.2	-0.8%	0.8	3.3%
Educational Services	71.7	66.2	66.7	0.5	0.8%	-5.0	-7.0%
Health Care and Social Assistance	112.1	102.3	101.4	-0.9	-0.9%	-10.7	-9.5%
Information, Culture and Recreation	24.0	41.1	42.1	1.0	2.4%	18.1	75.4%
Accommodation and Food Services	36.7	52.5	54.3	1.8	3.4%	17.6	48.0%
Other Services	35.7	18.5	20.2	1.7	9.2%	-15.5	-43.4%
Public Administration	19.8	34.1	37.8	3.7	10.9%	18.0	90.9%

Province of Alberta

Table: 14-10-0287-01 (282-0087) Labour force survey estimates (LFS), by sex and age group, seasonally adjusted, monthly (persons unless otherwise noted)

	June 2021	May 2022	June 2022	# Change May 2022 - June 2022	% Change May 2022 - June 2022	# Change June 2021 - June 2022	% Change June 2021 - June 2022
Population (x 1,000)	3,537.7	3,601.7	3,609.0	7.3	0.2%	71.3	2.0%
Labour force (x 1,000)	2,450.3	2,497.3	2,490.2	-7.1	-0.28%	39.9	1.6%
Employment (x 1,000)	2,221.5	2,365.7	2,367.7	2.0	0.1%	146.2	6.6%
Employment full-time (x 1,000)	1,781.1	1,940.8	1,934.4	-6.4	-0.3%	153.3	8.6%
Employment part-time (x 1,000)	440.4	424.8	433.3	8.5	2.0%	-7.1	-1.6%
Unemployment (x 1,000)	228.8	131.6	122.5	-9.1	-6.9%	-106.3	-46.5%
Unemployment rate (rate)	9.3%	5.3%	4.9%	-0.4%		-4.4%	
Participation rate (rate)	69.3%	69.3%	69.0%	-0.3%		-0.3%	
Employment rate (rate)	62.8%	65.7%	65.6%	-0.1%		2.8%	

Province of Alberta

Table: 14-10-0355-01 (282-0088) Labour force survey estimates (LFS), employment by North American Industry Classification System (NAICS), seasonally adjusted, monthly (persons x 1,000)

	June 2021	May 2022	June 2022	# Change May 2022 - June 2022	% Change May 2022 - June 2022	# Change June 2021 - June 2022	% Change June 2021 - June 2022
Total Employed - All Industries	2,221.5	2,365.7	2,367.7	2.0	0.1%	146.2	6.6%
Goods-Producing Sector	539.9	554.3	552.2	-2.1	-0.4%	12.3	2.3%
Agriculture	35.9	36.6	37.3	0.7	1.9%	1.4	3.9%
Forestry, Fishing, Mining, Quarrying, Oil and Gas	144.1	150.1	139.6	-10.5	-7.0%	-4.5	-3.1%
Utilities	17.9	21.2	19.9	-1.3	-6.1%	2.0	11.2%
Construction	219.0	224.6	232.0	7.4	3.3%	13.0	5.9%
Manufacturing	123.1	121.8	123.4	1.6	1.3%	0.3	0.2%
Services-Producing Sector	1,681.5	1,811.4	1,815.5	4.1	0.2%	134.0	8.0%
Wholesale & Retail Trade	330.4	392.8	371.1	-21.7	-5.5%	40.7	12.3%
Transportation and Warehousing	118.3	132.2	136.3	4.1	3.1%	18.0	15.2%
Finance, Insurance, Real Estate and Leasing	118.3	117.2	122.8	5.6	4.8%	4.5	3.8%
Professional, Scientific and Technical Services	182.0	206.8	205.4	-1.4	-0.7%	23.4	12.9%
Business, Building and Other Support Services	74.4	73.2	77.1	3.9	5.3%	2.7	3.6%
Educational Services	175.4	169.2	160.0	-9.2	-5.4%	-15.4	-8.8%
Health Care and Social Assistance	294.1	309.9	314.2	4.3	1.4%	20.1	6.8%
Information, Culture and Recreation	60.5	75.4	78.2	2.8	3.7%	17.7	29.3%
Accommodation and Food Services	127.3	139.3	137.0	-2.3	-1.7%	9.7	7.6%
Other Services	100.5	92.7	103.1	10.4	11.2%	2.6	2.6%
Public Administration	100.4	102.7	110.1	7.4	7.2%	9.7	9.7%

CANADA

Table: 14-10-0287-01 (282-0087) Labour force survey estimates (LFS), by sex and age group, seasonally adjusted, monthly (persons unless otherwise noted)

	June 2021	May 2022	June 2022	# Change May 2022 - June 2022	% Change May 2022 - June 2022	# Change June 2021 - June 2022	% Change June 2021 - June 2022
Population (x 1,000)	31,283.3	31,706.0	31,745.3	39.3	0.1%	462.0	1.5%
Labour force (x 1,000)	20,381.5	20,698.1	20,600.6	-97.5	-0.47%	219.1	1.1%
Employment (x 1,000)	18,789.9	19,640.3	19,597.1	-43.2	-0.220%	807.2	4.3%
Employment full-time (x 1,000)	15,219.5	16,032.6	16,028.6	-4.0	0.0%	809.1	5.3%
Employment part-time (x 1,000)	3,570.4	3,607.6	3,568.5	-39.1	-1.1%	-1.9	-0.1%
Unemployment (x 1,000)	1,591.6	1,057.8	1,003.5	-54.3	-5.1%	-588.1	-37.0%
Unemployment rate (rate)	7.8%	5.1%	4.9%	-0.2%		-2.9%	
Participation rate (rate)	65.2%	65.3%	64.9%	-0.4%		-0.3%	
Employment rate (rate)	60.1%	61.9%	61.7%	-0.2%		1.6%	

CANADA

Table: 14-10-0355-01 (282-0088) Labour force survey estimates (LFS), employment by North American Industry Classification System (NAICS), seasonally adjusted, monthly (persons x 1,000)

	June 2021	May 2022	June 2022	# Change May 2022 - June 2022	% Change May 2022 - June 2022	# Change June 2021 - June 2022	% Change June 2021 - June 2022
Total Employed - All Industries	18,789.9	19,640.3	19,597.1	-43.2	-0.2%	807.2	4.3%
Goods-Producing Sector	3,850.1	3,965.6	3,998.1	32.5	0.8%	148.0	3.8%
Agriculture	257.9	241.7	248.3	6.6	2.7%	-9.6	-3.7%
Forestry, Fishing, Mining, Quarrying, Oil and Gas	327.8	345.3	325.2	-20.1	-5.8%	-2.6	-0.8%
Utilities	140.7	147.3	144.0	-3.3	-2.2%	3.3	2.3%
Construction	1,416.2	1,510.2	1,533.2	23.0	1.5%	117.0	8.3%
Manufacturing	1,707.6	1,721.1	1,747.4	26.3	1.5%	39.8	2.3%
Services-Producing Sector	14,939.8	15,674.7	15,599.0	-75.7	-0.5%	659.2	4.4%
Wholesale and retail trade	2,811.9	2,995.2	2,934.5	-60.7	-2.0%	122.6	4.4%
Transportation and Warehousing	972.7	993.0	1,004.2	11.2	1.1%	31.5	3.2%
Finance, Insurance, Real Estate and Leasing	1,290.6	1,321.5	1,325.3	3.8	0.3%	34.7	2.7%
Professional, Scientific and Technical Services	1,671.8	1,790.1	1,796.0	5.9	0.3%	124.2	7.4%
Business, Building and Other Support Services	716.2	716.7	721.2	4.5	0.6%	5.0	0.7%
Educational Services	1,457.6	1,511.7	1,497.5	-14.2	-0.9%	39.9	2.7%
Health Care and Social Assistance	2,561.3	2,630.8	2,610.6	-20.2	-0.8%	49.3	1.9%
Information, Culture and Recreation	702.4	829.9	816.0	-13.9	-1.7%	113.6	16.2%
Accommodation and Food Services	957.9	1,054.6	1,044.1	-10.5	-1.0%	86.2	9.0%
Other Services	746.2	714.0	717.4	3.4	0.5%	-28.8	-3.9%
Public Administration	1,051.2	1,117.2	1,132.1	14.9	1.3%	80.9	7.7%

Unemployment Rates for Key Markets

	June 2021	May 2022	June 2022
Calgary	9.2%	6.6%	5.5%
Alberta	9.3%	5.3%	4.9%
Canada	7.8%	5.1%	4.9%
Montreal	7.7%	4.8%	4.8%
Ottawa	7.8%	4.3%	3.6%
Toronto	9.8%	4.3%	3.6%
Edmonton	9.7%	6.2%	5.9%
Vancouver	7.5%	5.2%	5.0%
Winnipeg	7.9%	5.3%	4.9%
Regina	6.8%	5.7%	5.2%
Saskatoon	7.3%	4.7%	4.4%
Wood Buffalo			

Facts & Figures

Highest Unemployment Rate during 2008-2010 downturn: 7.5% in January 2010

Highest Unemployment Rate during 1992-1996 downturn: 10.8% in July 1993
Number of additional jobs we would need to lose to reach this level: 48,673
(or amount labour force would need to grow by with no additional new jobs)

Highest Unemployment Rate during 1982-1985 downturn: 13.2% in March 1983
Number of additional jobs we would need to lose to reach this level: 70,911
(or amount labour force would need to grow by with no additional new jobs)

The last time Calgary had negative employment growth:

Between November 2009 and May 2010 Calgary lost 12,900 jobs.
Between November 2008 and July 2009 Calgary lost 27,000 jobs.
From peak employment in November 2008 to the lowest level reached in May 2010 - 33,400 jobs were lost in Calgary.

Calgary lost a small number of jobs July-August 2012 (2,400), again in March 2013 (3,200), and again (3,300) in February to April 2014.

Calgary

Number of jobs gained/lost in 2014:	11,300
Number of jobs gained/lost in 2015:	(16,200)
Number of jobs gained/lost December 2014 to June 2016:	(23,100)
Number of jobs gained/lost in 2016:	12,700
Number of jobs gained/lost in 2017:	14,400
Number of jobs gained/lost in 2018:	8,800
Number of jobs gained/lost in 2019:	14,400
Number of jobs gained/lost in 2020:	(5,600)
Number of jobs gained/lost in 2021:	7,100
Number of jobs gained/lost in 2022 (to-date):	46,900

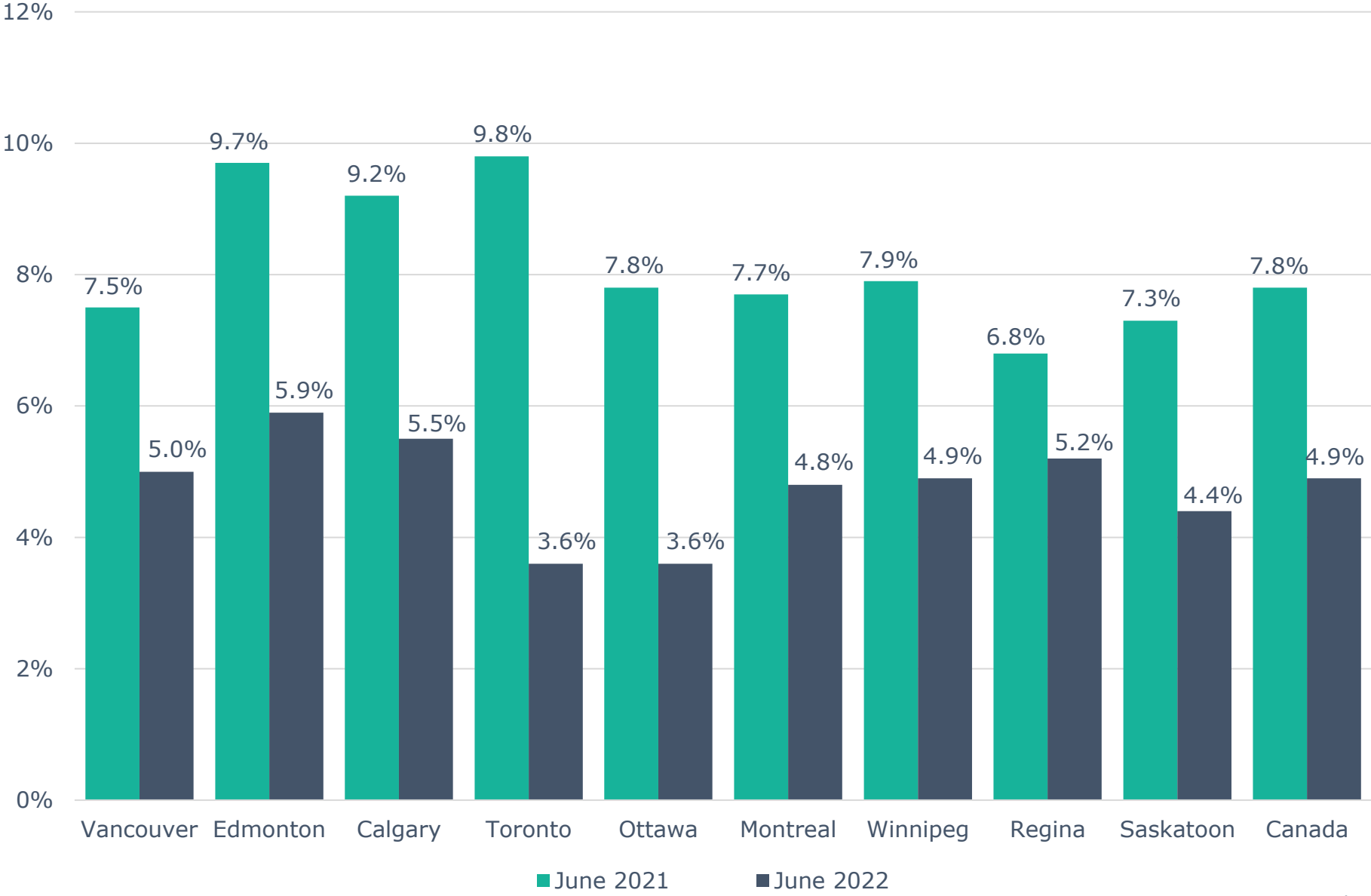
Alberta

Number of jobs gained/lost in 2014:	46,000
Number of jobs gained/lost in 2015:	(40,100)
Number of jobs gained/lost December 2014 to June 2016:	(73,800)
Number of jobs gained/lost in 2016:	(21,500)
Number of jobs gained/lost in 2017:	57,300
Number of jobs gained/lost in 2018:	21,000
Number of jobs gained/lost in 2019:	(3,700)
Number of jobs gained/lost in 2020:	(109,900)
Number of jobs gained/lost in 2021:	139,200
Number of jobs gained/lost in 2022 (to-date):	67,900

Source: Calgary - Table 14-10-0294-02 (282-0135); Alberta - 14-10-0287-01 (282-0087); Statistics Canada

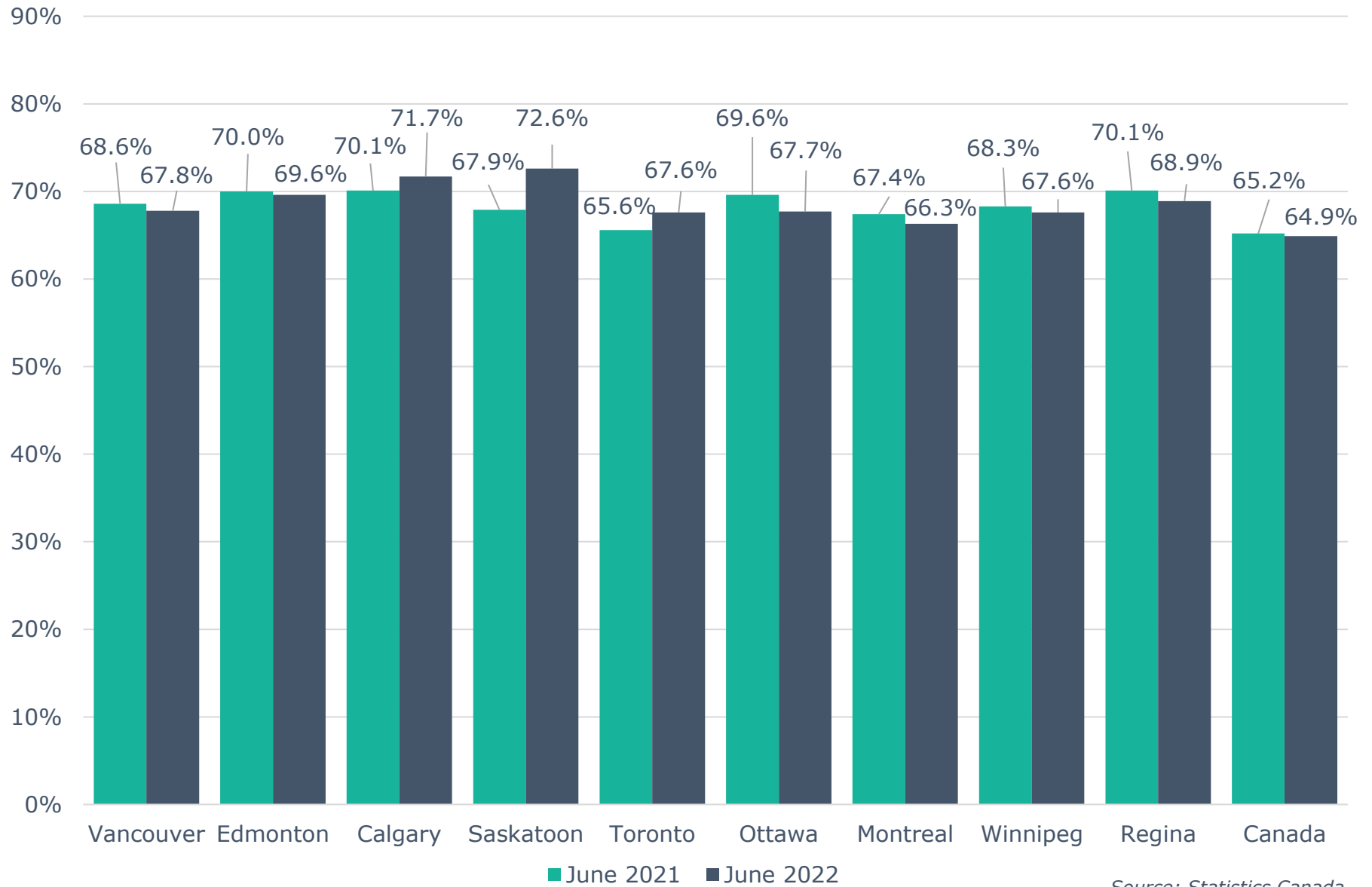
Note: Labour Force Survey, Employment, Seasonally Adjusted

Unemployment Rate Across Canada



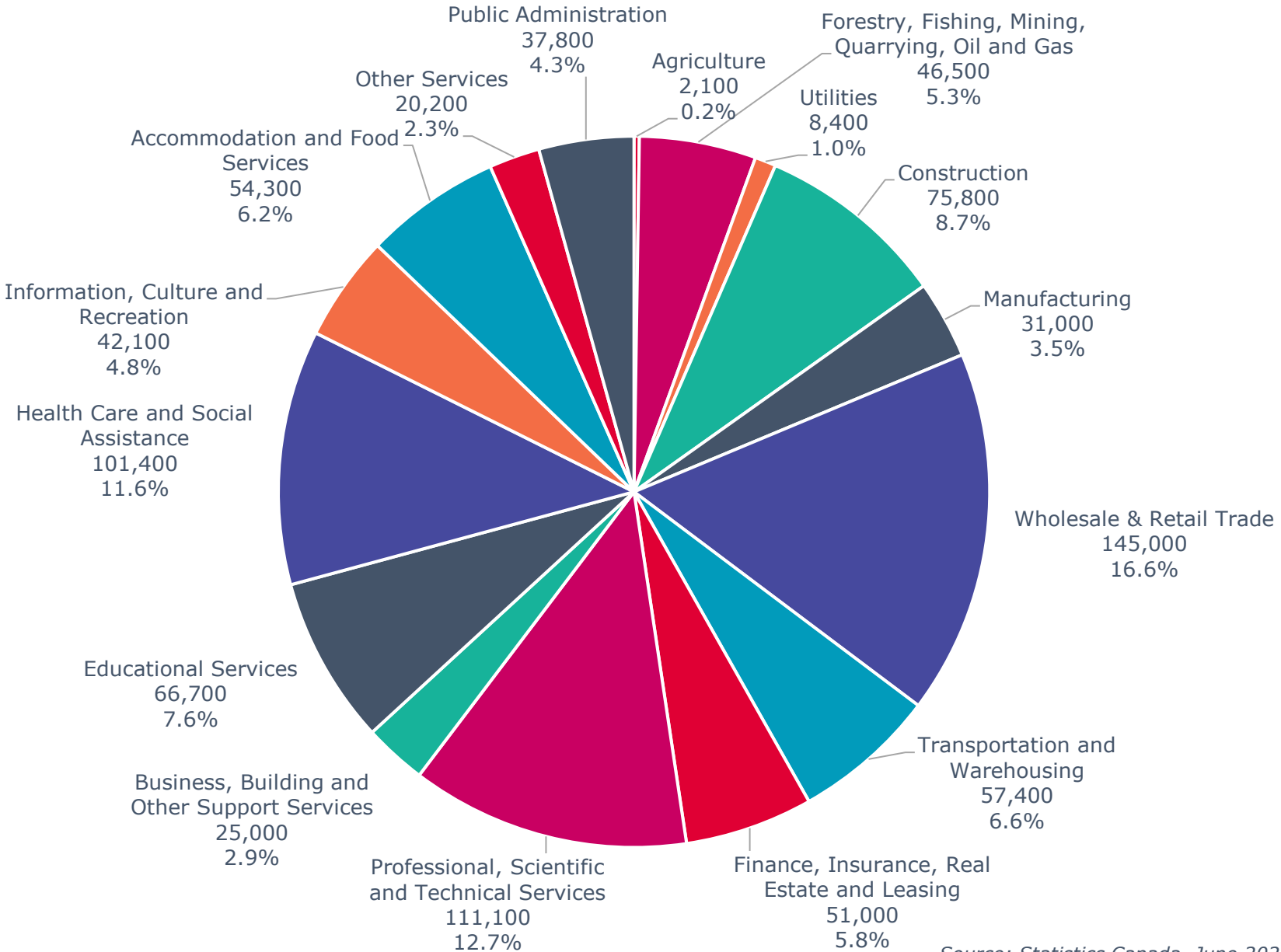
Source: Statistics Canada

Labour Force Participation Rate Across Canada



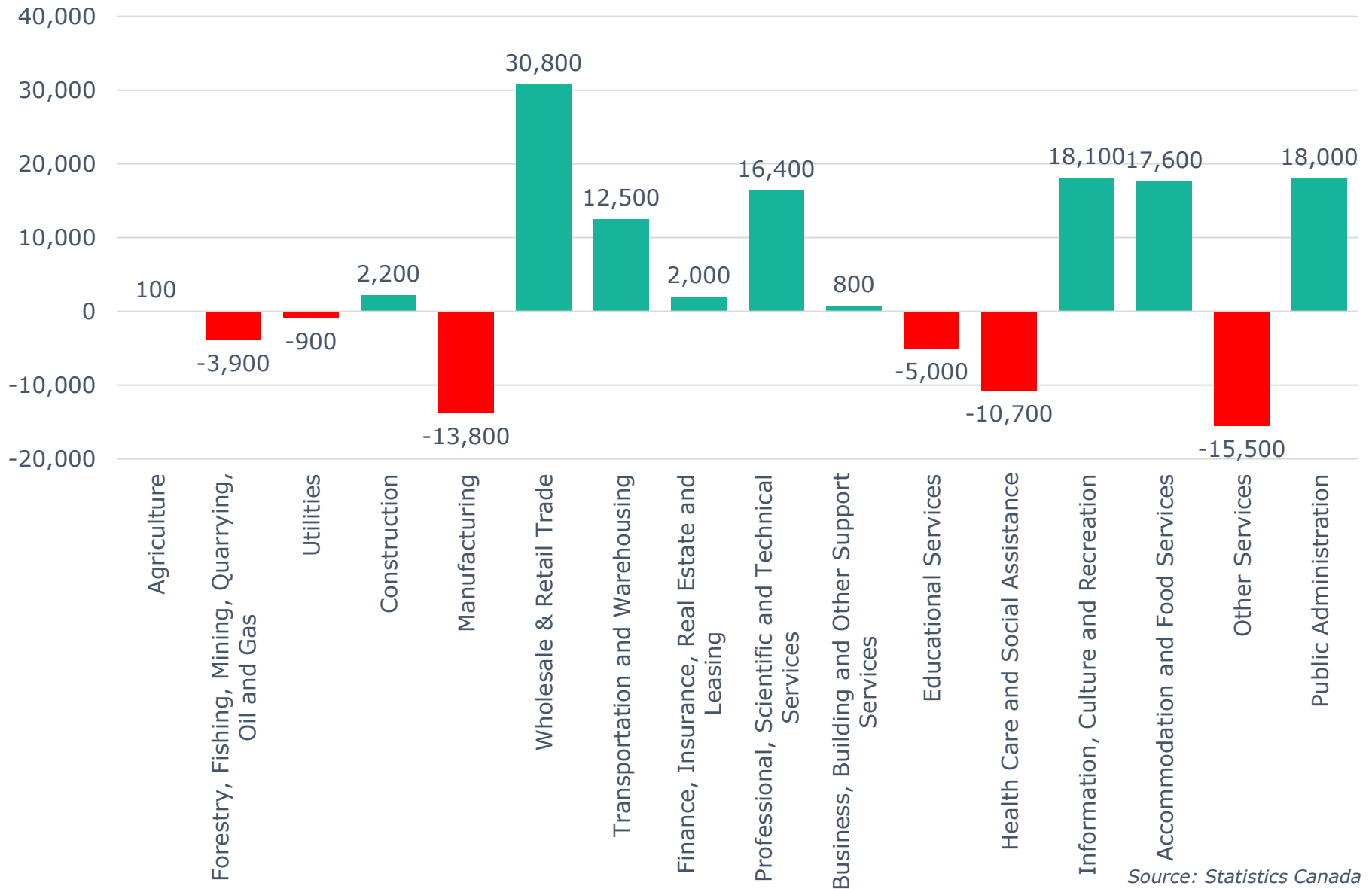
Source: Statistics Canada

Calgary CMA Employment by Industry (875,900)



Source: Statistics Canada, June 2022

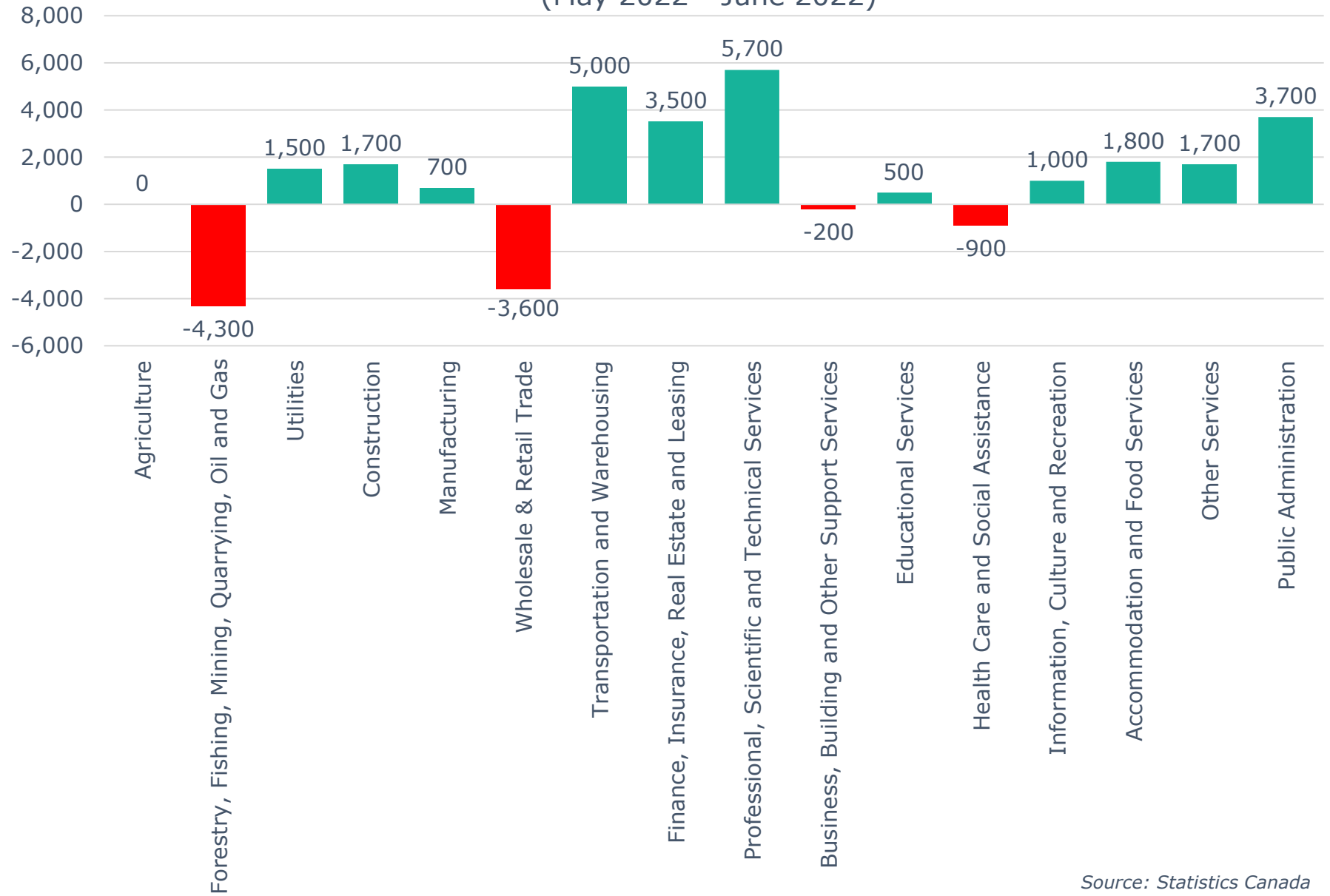
Calgary CMA 12-Month Net Jobs Gained or Lost by Industry (June 2022)



Source: Statistics Canada

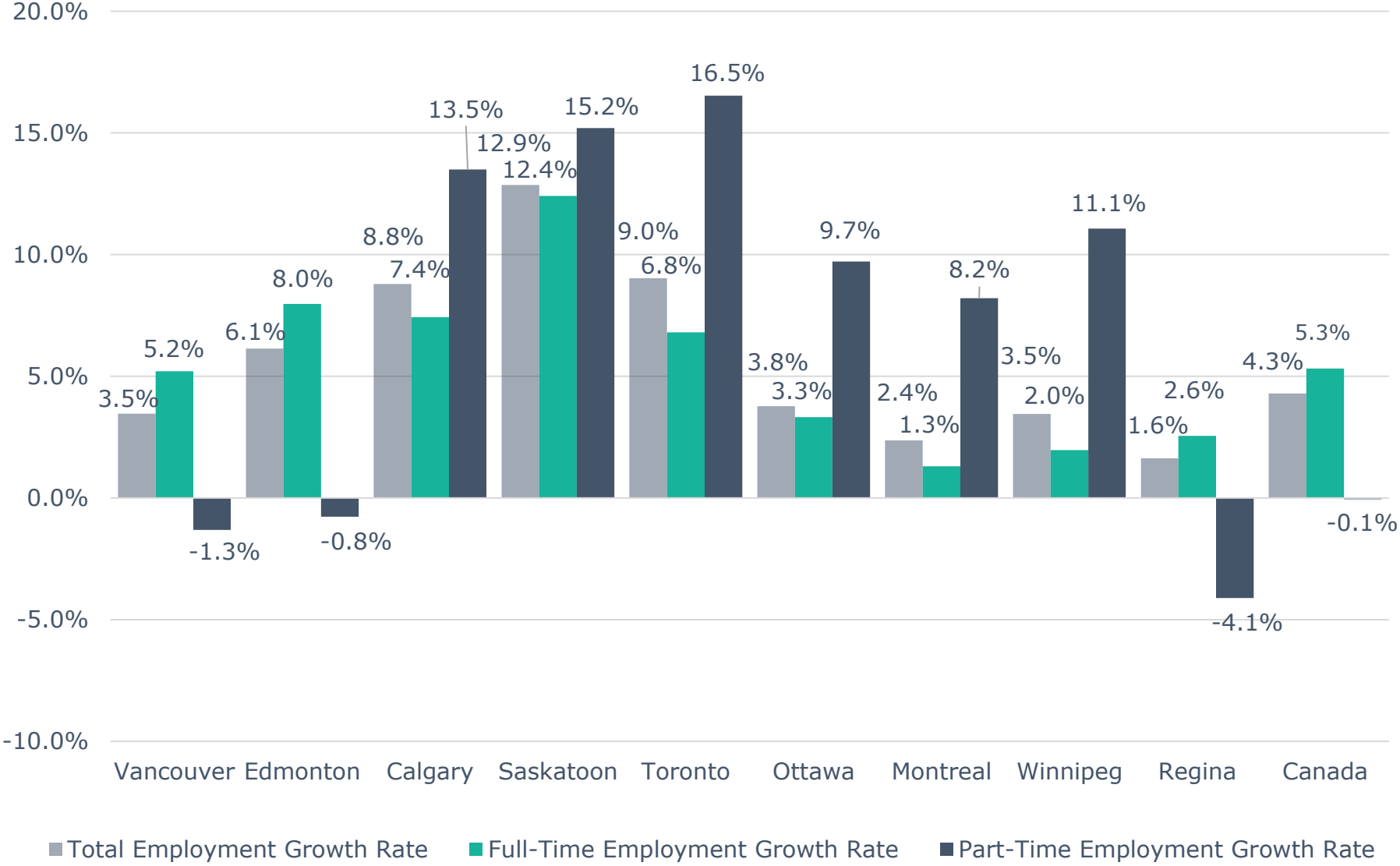
Calgary CMA Monthly Net Jobs Gained or Lost by Industry

(May 2022 - June 2022)



Source: Statistics Canada

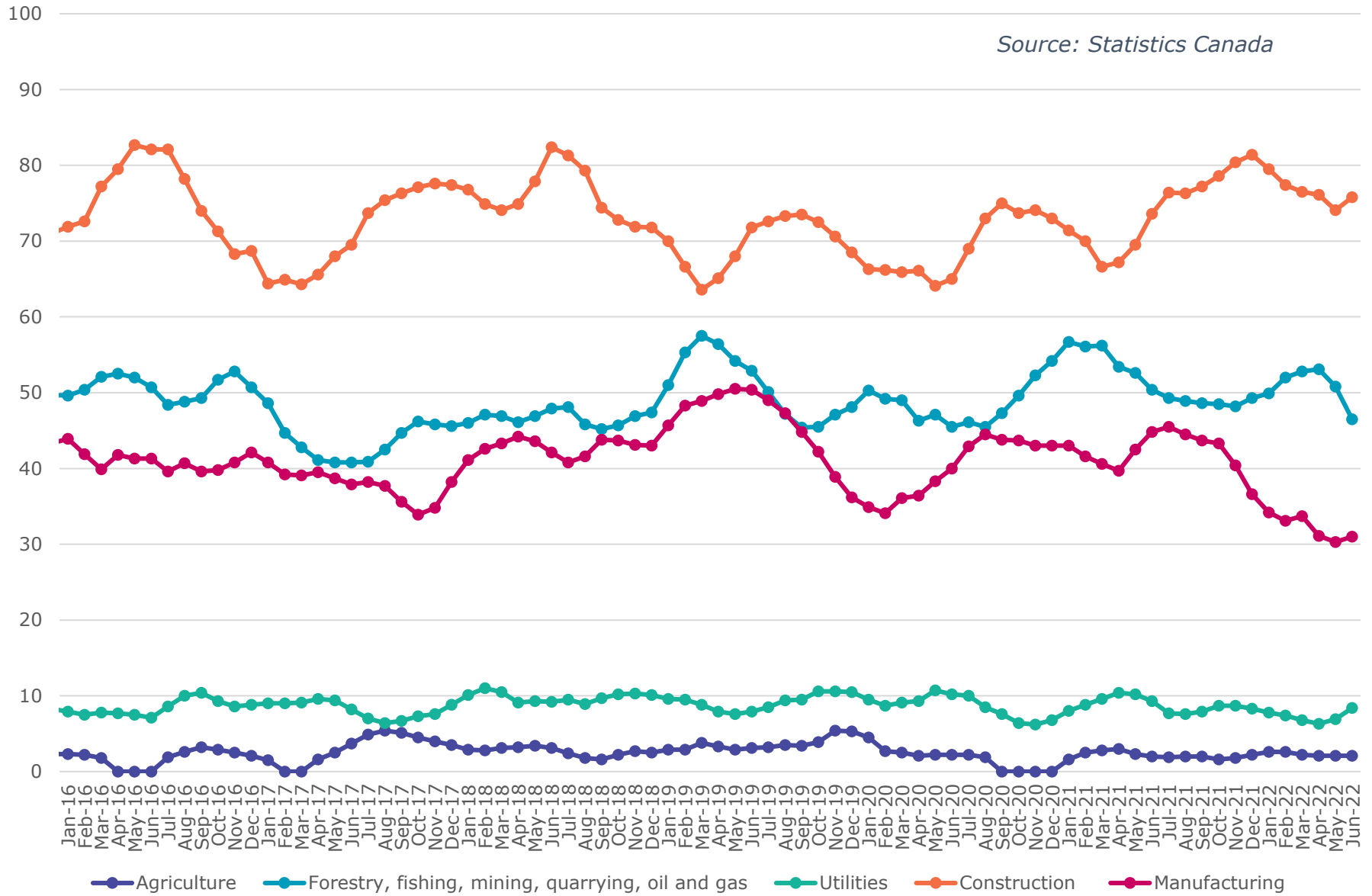
Annual Employment Growth



Source: Statistics Canada, June 2021 - June 2022

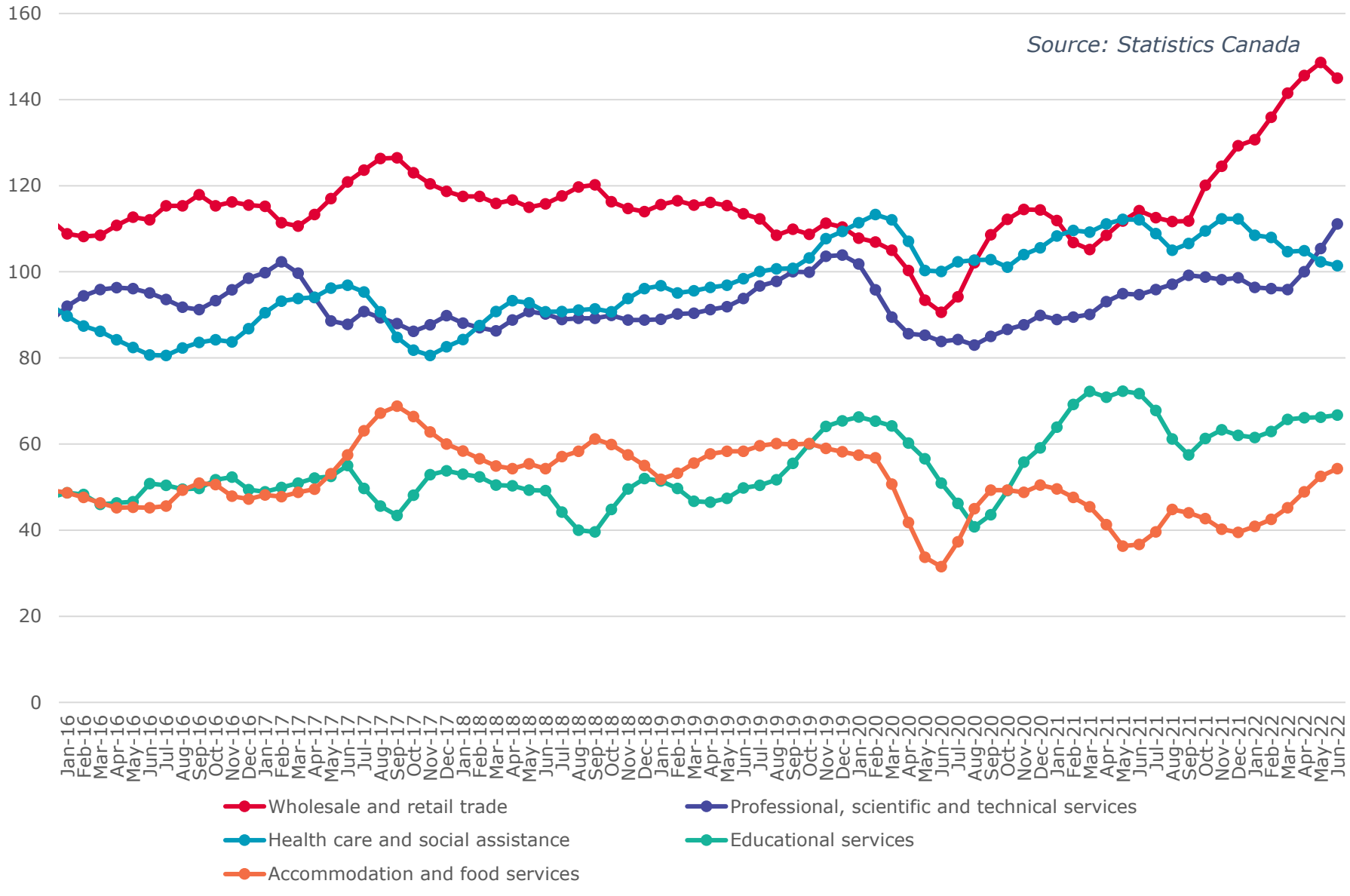
Calgary CMA Goods Producing Sectors - Number of Employees (In thousands)

Source: Statistics Canada



Calgary CMA Largest 5 Services Sector by Number of Employees (In thousands)

Source: Statistics Canada



Calgary CMA Smallest 6 Service Sectors by Number of Employees (In thousands)

Source: Statistics Canada

