



Labour Force Survey Statistics January 2022

CALGARY CMA

Table 14-10-0380-02 (282-0135) Labour force survey estimates (LFS), by census metropolitan area based on 2011 census boundaries, 3-month moving average, seasonally adjusted, monthly (persons unless otherwise noted)							
	January 2021	December 2021	January 2022	# Change December 2021 - January 2022	% Change December 2021 - January 2022	# Change January 2021 - January 2022	% Change January 2021 - January 2022
Population (x 1,000)	1,257.6	1,275.4	1,277.9	2.5	0.2%	20.3	1.6%
Labour force (x 1,000)	909.1	904.0	903.0	-1.0	-0.1%	-6.1	-0.7%
Employment (x 1,000)	813.1	828.2	826.0	-2.2	-0.3%	12.9	1.6%
Unemployment (x 1,000)	96.0	75.8	77.0	1.2	1.6%	-19.0	-19.8%
Unemployment rate (rate)	10.6%	8.4%	8.5%	0.1%		-2.1%	
Participation rate (rate)	72.3%	70.9%	70.7%	-0.2%		-1.6%	
Employment rate (rate)	64.7%	64.9%	64.6%	-0.3%		-0.1%	

CALGARY CMA

Table 14-10-0378-01 (282-0128) Labour force survey estimates (LFS), by census metropolitan area based on 2011 census boundaries, 3-month moving average, unadjusted for seasonality, monthly (persons unless otherwise noted)							
	January 2021	December 2021	January 2022	# Change December 2021 - January 2022	% Change December 2021 - January 2022	# Change January 2021 - January 2022	% Change January 2021 - January 2022
Population (x 1,000)	1,257.6	1,275.4	1,277.9	2.5	0.2%	20.3	1.6%
Labour force (x 1,000)	904.4	904.7	900.1	-4.6	-0.5%	-4.3	-0.5%
Employment (x 1,000)	811.8	834.7	828.8	-5.9	-0.7%	17.0	2.1%
Full-time employment (x 1,000)	659.3	680.0	669.7	-10.3	-1.5%	10.4	1.6%
Part-time employment (x 1,000)	152.6	154.7	159.2	4.5	2.9%	6.6	4.3%
Unemployment (x 1,000)	92.6	70.0	71.3	1.3	1.9%	-21.3	-23.0%
Not in labour force (x 1,000)	353.2	370.7	377.8	7.1	1.9%	24.6	7.0%
Unemployment rate (rate)	10.2%	7.7%	7.9%	0.2%		-2.3%	
Participation rate (rate)	71.9%	70.9%	70.4%	-0.5%		-1.5%	
Employment rate (rate)	64.6%	65.4%	64.9%	-0.5%		0.3%	

CALGARY CMA

Table: 14-10-0397-01 (282-0130) Labour force survey estimates (LFS), employment by census metropolitan area based on 2011 census boundaries and North American Industry Classification System (NAICS), 3-month moving average, unadjusted for seasonality, monthly (persons x 1,000)

	January 2021	December 2021	January 2022	# Change December 2021 - January 2022	% Change December 2021 - January 2022	# Change January 2021 - January 2022	% Change January 2021 - January 2022
Total Employed - All Industries	811.8	834.7	828.8	-5.9	-0.7%	17.0	2.1%
Goods-Producing Sector	180.7	177.6	174.0	-3.6	-2.0%	-6.7	-3.7%
Agriculture	1.6	2.2	2.6	0.4	18.2%	1.0	62.5%
Forestry, Fishing, Mining, Quarrying, Oil and Gas	56.7	49.3	49.9	0.6	1.2%	-6.8	-12.0%
Utilities	8.0	8.3	7.8	-0.5	-6.0%	-0.2	-2.5%
Construction	71.4	81.4	79.5	-1.9	-2.3%	8.1	11.3%
Manufacturing	43.0	36.6	34.2	-2.4	-6.6%	-8.8	-20.5%
Services-Producing Sector	631.2	657.1	654.9	-2.2	-0.3%	23.7	3.8%
Wholesale & Retail Trade	111.9	129.3	130.7	1.4	1.1%	18.8	16.8%
Transportation and Warehousing	53.1	59.3	56.9	-2.4	-4.0%	3.8	7.2%
Finance, Insurance, Real Estate and Leasing	47.0	53.3	51.8	-1.5	-2.8%	4.8	10.2%
Professional, Scientific and Technical Services	88.9	98.6	96.4	-2.2	-2.2%	7.5	8.4%
Business, Building and Other Support Services	22.7	26.9	26.2	-0.7	-2.6%	3.5	15.4%
Educational Services	63.9	62.0	61.5	-0.5	-0.8%	-2.4	-3.8%
Health Care and Social Assistance	108.3	112.3	108.5	-3.8	-3.4%	0.2	0.2%
Information, Culture and Recreation	29.8	28.8	31.6	2.8	9.7%	1.8	6.0%
Accommodation and Food Services	49.6	39.5	40.9	1.4	3.5%	-8.7	-17.5%
Other Services	34.6	23.2	24.3	1.1	4.7%	-10.3	-29.8%
Public Administration	21.3	24.0	26.1	2.1	8.8%	4.8	22.5%

Province of Alberta

Table: 14-10-0287-01 (282-0087) Labour force survey estimates (LFS), by sex and age group, seasonally adjusted, monthly (persons unless otherwise noted)							
	January 2021	December 2021	January 2022	# Change December 2021 - January 2022	% Change December 2021 - January 2022	# Change January 2021 - January 2022	% Change January 2021 - January 2022
Population (x 1,000)	3,527.7	3,568.1	3,573.9	5.8	0.2%	46.2	1.3%
Labour force (x 1,000)	2,444.1	2,485.2	2,486.7	1.5	0.06%	42.6	1.7%
Employment (x 1,000)	2,181.4	2,299.8	2,306.8	7.0	0.3%	125.4	5.7%
Employment full-time (x 1,000)	1,766.7	1,868.2	1,864.3	-3.9	-0.2%	97.6	5.5%
Employment part-time (x 1,000)	414.7	431.6	442.5	10.9	2.5%	27.8	6.7%
Unemployment (x 1,000)	262.7	185.4	179.9	-5.5	-3.0%	-82.8	-31.5%
Unemployment rate (rate)	10.7%	7.5%	7.2%	-0.3%		-3.5%	
Participation rate (rate)	69.3%	69.7%	69.6%	-0.1%		0.3%	
Employment rate (rate)	61.8%	64.5%	64.5%	0.0%		2.7%	

Province of Alberta

Table: 14-10-0355-01 (282-0088) Labour force survey estimates (LFS), employment by North American Industry Classification System (NAICS), seasonally adjusted, monthly (persons x 1,000)

	January 2021	December 2021	January 2022	# Change December 2021 - January 2022	% Change December 2021 - January 2022	# Change January 2021 - January 2022	% Change January 2021 - January 2022
Total Employed - All Industries	2,181.4	2,299.8	2,306.8	7.0	0.3%	125.4	5.7%
Goods-Producing Sector	552.4	538.1	556.5	18.4	3.4%	4.1	0.7%
Agriculture	40.0	32.5	33.5	1.0	3.1%	-6.5	-16.3%
Forestry, Fishing, Mining, Quarrying, Oil and Gas	139.5	143.0	146.0	3.0	2.1%	6.5	4.7%
Utilities	23.5	17.5	19.8	2.3	13.1%	-3.7	-15.7%
Construction	226.5	226.2	227.9	1.7	0.8%	1.4	0.6%
Manufacturing	123.0	118.9	129.4	10.5	8.8%	6.4	5.2%
Services-Producing Sector	1,628.9	1,761.7	1,750.4	-11.3	-0.6%	121.5	7.5%
Wholesale & Retail Trade	331.3	354.8	354.0	-0.8	-0.2%	22.7	6.9%
Transportation and Warehousing	130.6	137.5	138.7	1.2	0.9%	8.1	6.2%
Finance, Insurance, Real Estate and Leasing	107.2	118.2	118.2	0.0	0.0%	11.0	10.3%
Professional, Scientific and Technical Services	176.1	196.6	191.1	-5.5	-2.8%	15.0	8.5%
Business, Building and Other Support Services	73.4	70.3	70.1	-0.2	-0.3%	-3.3	-4.5%
Educational Services	160.9	164.3	158.2	-6.1	-3.7%	-2.7	-1.7%
Health Care and Social Assistance	305.8	313.4	319.4	6.0	1.9%	13.6	4.4%
Information, Culture and Recreation	59.3	68.1	75.5	7.4	10.9%	16.2	27.3%
Accommodation and Food Services	85.3	124.1	125.3	1.2	1.0%	40.0	46.9%
Other Services	96.0	103.3	92.7	-10.6	-10.3%	-3.3	-3.4%
Public Administration	103.2	111.1	107.1	-4.0	-3.6%	3.9	3.8%

CANADA

Table: 14-10-0287-01 (282-0087) Labour force survey estimates (LFS), by sex and age group, seasonally adjusted, monthly (persons unless otherwise noted)

	January 2021	December 2021	January 2022	# Change December 2021 - January 2022	% Change December 2021 - January 2022	# Change January 2021 - January 2022	% Change January 2021 - January 2022
Population (x 1,000)	31,191.2	31,510.3	31,546.8	36.5	0.1%	355.6	1.1%
Labour force (x 1,000)	20,171.0	20,612.3	20,517.9	-94.4	-0.46%	346.9	1.7%
Employment (x 1,000)	18,272.0	19,376.2	19,176.1	-200.1	-1.033%	904.1	4.9%
Employment full-time (x 1,000)	15,132.3	15,797.3	15,714.6	-82.7	-0.5%	582.3	3.8%
Employment part-time (x 1,000)	3,139.7	3,578.9	3,461.5	-117.4	-3.3%	321.8	10.2%
Unemployment (x 1,000)	1,899.0	1,236.1	1,341.8	105.7	8.6%	-557.2	-29.3%
Unemployment rate (rate)	9.4%	6.0%	6.5%	0.5%		-2.9%	
Participation rate (rate)	64.7%	65.4%	65.0%	-0.4%		0.3%	
Employment rate (rate)	58.6%	61.5%	60.8%	-0.7%		2.2%	

CANADA

Table: 14-10-0355-01 (282-0088) Labour force survey estimates (LFS), employment by North American Industry Classification System (NAICS), seasonally adjusted, monthly (persons x 1,000)

	January 2021	December 2021	January 2022	# Change December 2021 - January 2022	% Change December 2021 - January 2022	# Change January 2021 - January 2022	% Change January 2021 - January 2022
Total Employed - All Industries	18,272.0	19,376.2	19,176.1	-200.1	-1.0%	904.1	4.9%
Goods-Producing Sector	3,909.5	3,925.3	3,948.2	22.9	0.6%	38.7	1.0%
Agriculture	271.3	238.0	238.0	0.0	0.0%	-33.3	-12.3%
Forestry, Fishing, Mining, Quarrying, Oil and Gas	322.3	320.5	326.4	5.9	1.8%	4.1	1.3%
Utilities	141.8	140.6	145.5	4.9	3.5%	3.7	2.6%
Construction	1,435.6	1,460.3	1,482.9	22.6	1.5%	47.3	3.3%
Manufacturing	1,738.6	1,765.9	1,755.5	-10.4	-0.6%	16.9	1.0%
Services-Producing Sector	14,362.5	15,450.9	15,227.8	-223.1	-1.4%	865.3	6.0%
Wholesale and retail trade	2,630.1	2,945.8	2,927.4	-18.4	-0.6%	297.3	11.3%
Transportation and Warehousing	972.6	1,020.1	1,022.3	2.2	0.2%	49.7	5.1%
Finance, Insurance, Real Estate and Leasing	1,284.6	1,320.8	1,323.4	2.6	0.2%	38.8	3.0%
Professional, Scientific and Technical Services	1,612.8	1,722.0	1,717.7	-4.3	-0.2%	104.9	6.5%
Business, Building and Other Support Services	695.0	717.6	695.7	-21.9	-3.1%	0.7	0.1%
Educational Services	1,404.7	1,478.6	1,467.8	-10.8	-0.7%	63.1	4.5%
Health Care and Social Assistance	2,500.2	2,613.2	2,623.4	10.2	0.4%	123.2	4.9%
Information, Culture and Recreation	659.2	783.4	735.0	-48.4	-6.2%	75.8	11.5%
Accommodation and Food Services	837.3	1,014.7	901.8	-112.9	-11.1%	64.5	7.7%
Other Services	730.4	724.1	711.3	-12.8	-1.8%	-19.1	-2.6%
Public Administration	1,035.6	1,110.6	1,102.1	-8.5	-0.8%	66.5	6.4%

Unemployment Rates for Key Markets

	January 2021	December 2021	January 2022
Calgary	10.6%	8.4%	8.5%
Alberta	10.7%	7.5%	7.2%
Canada	9.4%	6.0%	6.5%
Montreal	8.5%	5.4%	5.2%
Ottawa	6.7%	4.4%	4.7%
Toronto	11.1%	4.4%	4.7%
Edmonton	11.9%	6.5%	6.6%
Vancouver	7.8%	5.8%	5.7%
Winnipeg	8.8%	5.3%	5.0%
Regina	7.6%	5.7%	5.3%
Saskatoon	8.6%	5.6%	5.2%
Wood Buffalo			

Facts & Figures

Highest Unemployment Rate during 2008-2010 downturn: 7.5% in January 2010

Highest Unemployment Rate during 1992-1996 downturn: 10.8% in July 1993
Number of additional jobs we would need to lose to reach this level: 20,524
(or amount labour force would need to grow by with no additional new jobs)

Highest Unemployment Rate during 1982-1985 downturn: 13.2% in March 1983
Number of additional jobs we would need to lose to reach this level: 42,196
(or amount labour force would need to grow by with no additional new jobs)

The last time Calgary had negative employment growth:

Between November 2009 and May 2010 Calgary lost 12,900 jobs.

Between November 2008 and July 2009 Calgary lost 27,000 jobs.

From peak employment in November 2008 to the lowest level reached in May 2010 - 33,400 jobs were lost in Calgary.

Calgary lost a small number of jobs July-August 2012 (2,400), again in March 2013 (3,200), and again (3,300) in February to April 2014.

Calgary

Number of jobs gained/lost in 2014:	11,300
Number of jobs gained/lost in 2015:	(16,200)
Number of jobs gained/lost December 2014 to June 2016:	(23,100)
Number of jobs gained/lost in 2016:	12,700
Number of jobs gained/lost in 2017:	14,400
Number of jobs gained/lost in 2018:	8,800
Number of jobs gained/lost in 2019:	14,400
Number of jobs gained/lost in 2020:	(5,600)
Number of jobs gained/lost in 2021:	7,100
Number of jobs gained/lost in 2022 (to-date):	(2,200)

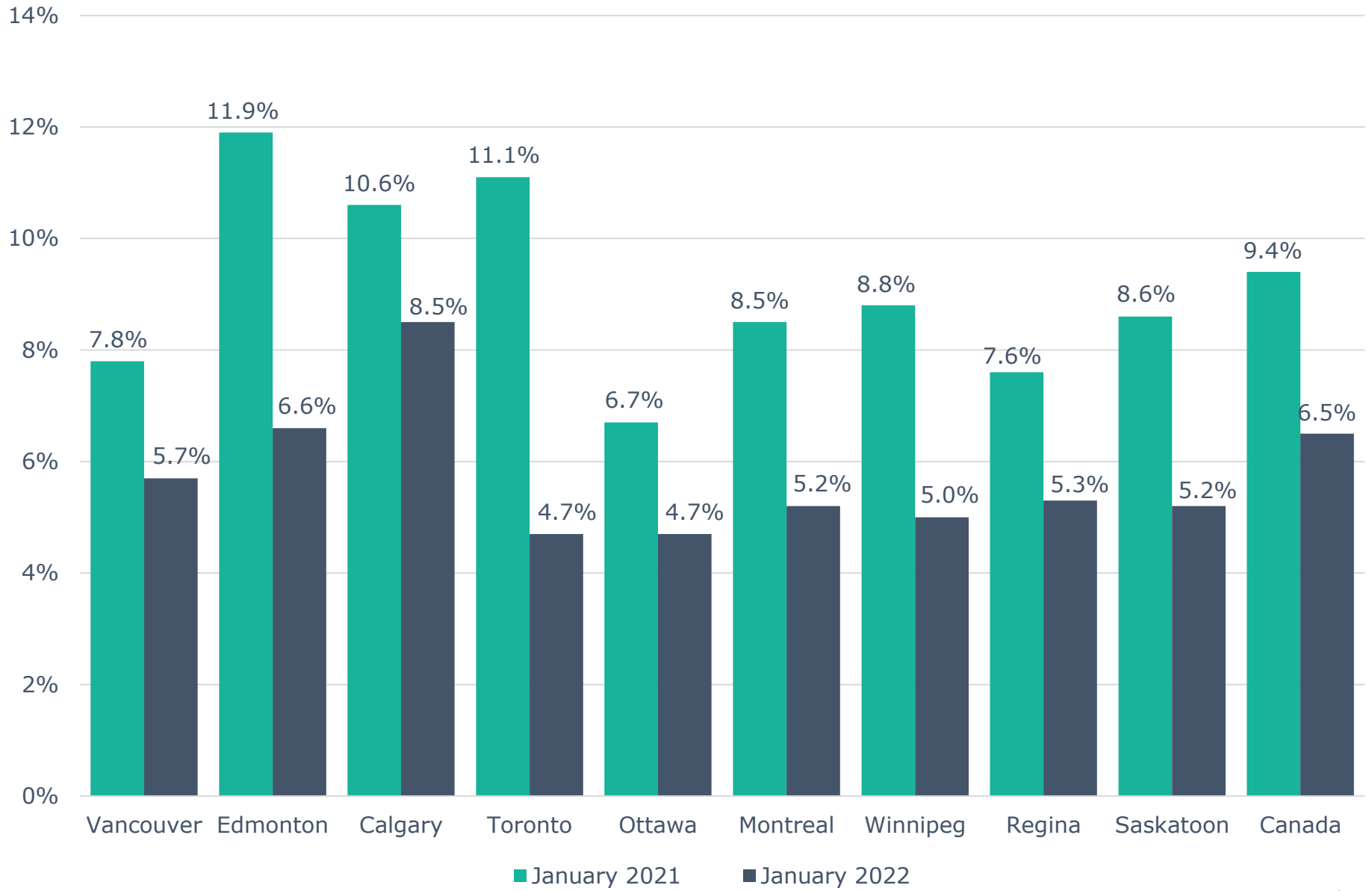
Alberta

Number of jobs gained/lost in 2014:	46,000
Number of jobs gained/lost in 2015:	(40,100)
Number of jobs gained/lost December 2014 to June 2016:	(73,800)
Number of jobs gained/lost in 2016:	(21,500)
Number of jobs gained/lost in 2017:	57,300
Number of jobs gained/lost in 2018:	21,000
Number of jobs gained/lost in 2019:	(3,700)
Number of jobs gained/lost in 2020:	(109,900)
Number of jobs gained/lost in 2021:	139,200
Number of jobs gained/lost in 2022 (to-date):	7,000

Source: Calgary - Table 14-10-0294-02 (282-0135); Alberta - 14-10-0287-01 (282-0087); Statistics Canada

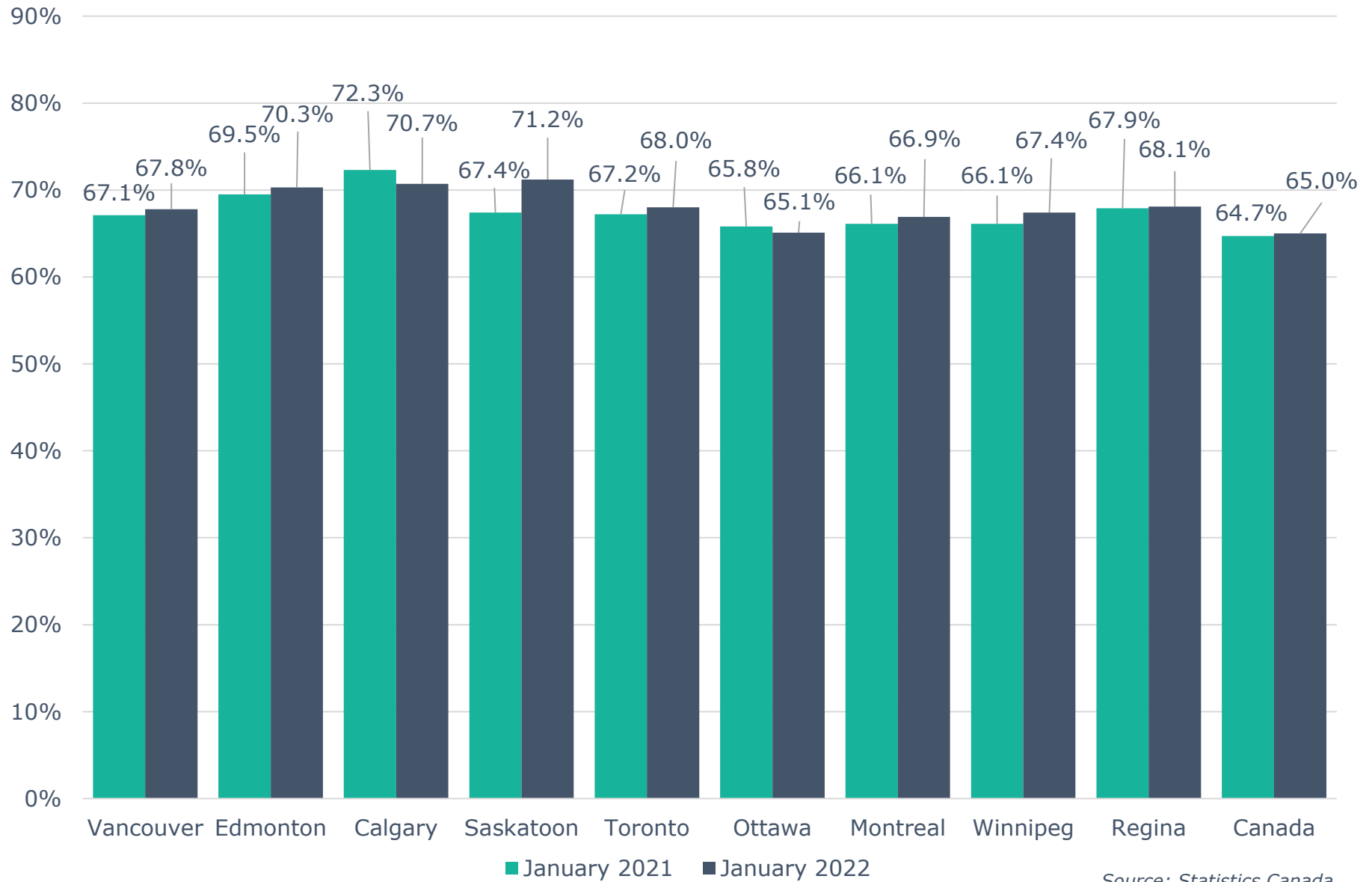
Note: Labour Force Survey, Employment, Seasonally Adjusted

Unemployment Rate Across Canada



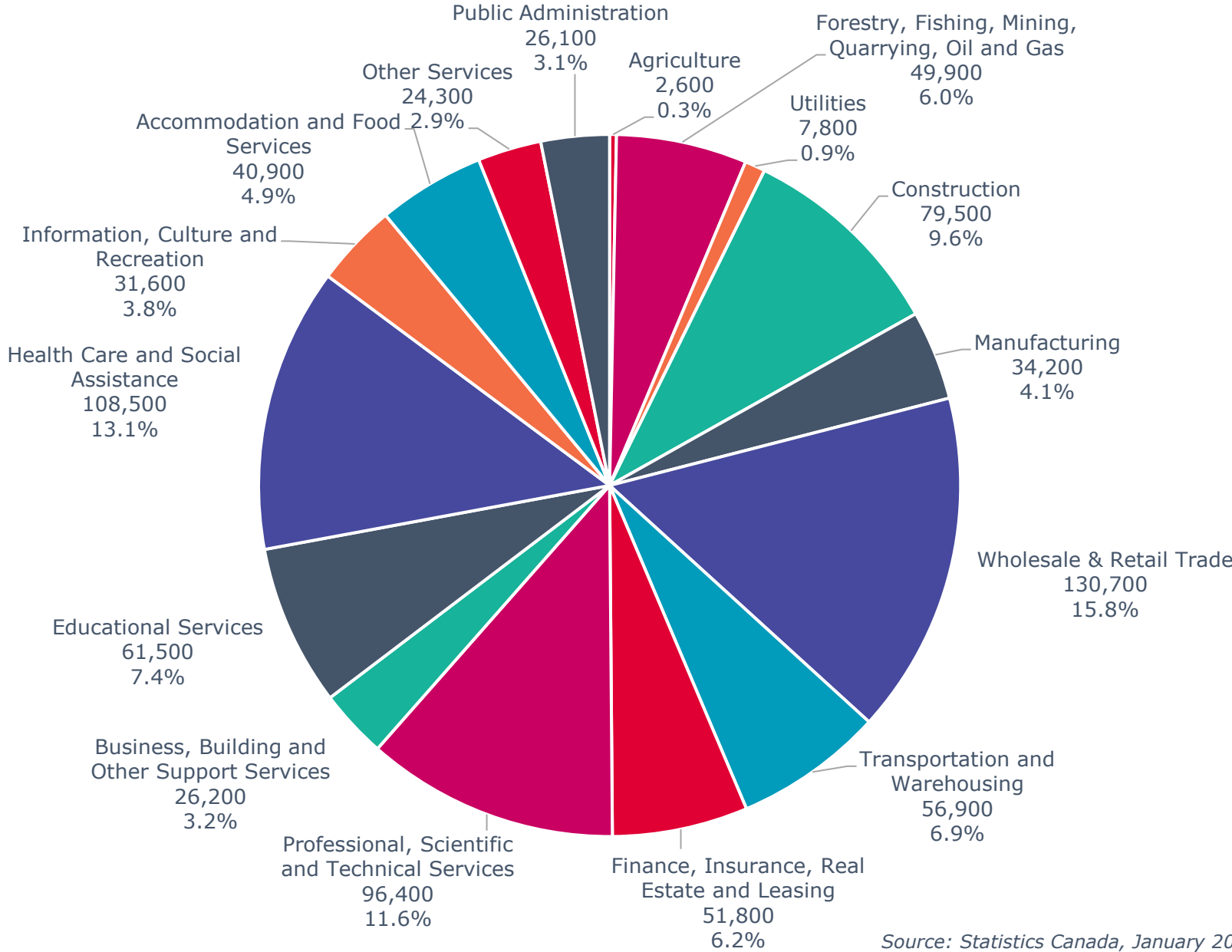
Source: Statistics Canada

Labour Force Participation Rate Across Canada



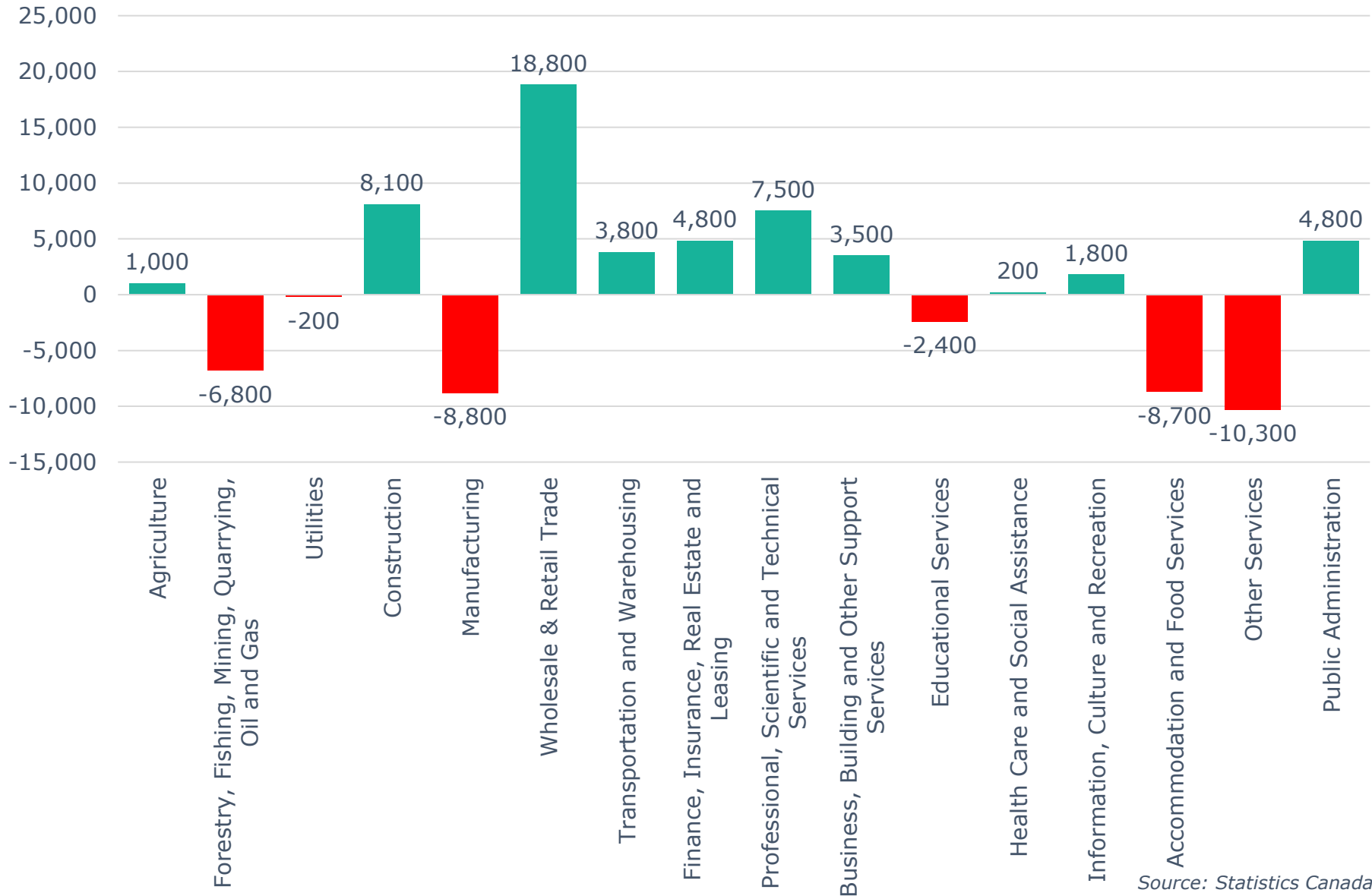
Source: Statistics Canada

Calgary CMA Employment by Industry (828,800)



Source: Statistics Canada, January 2022

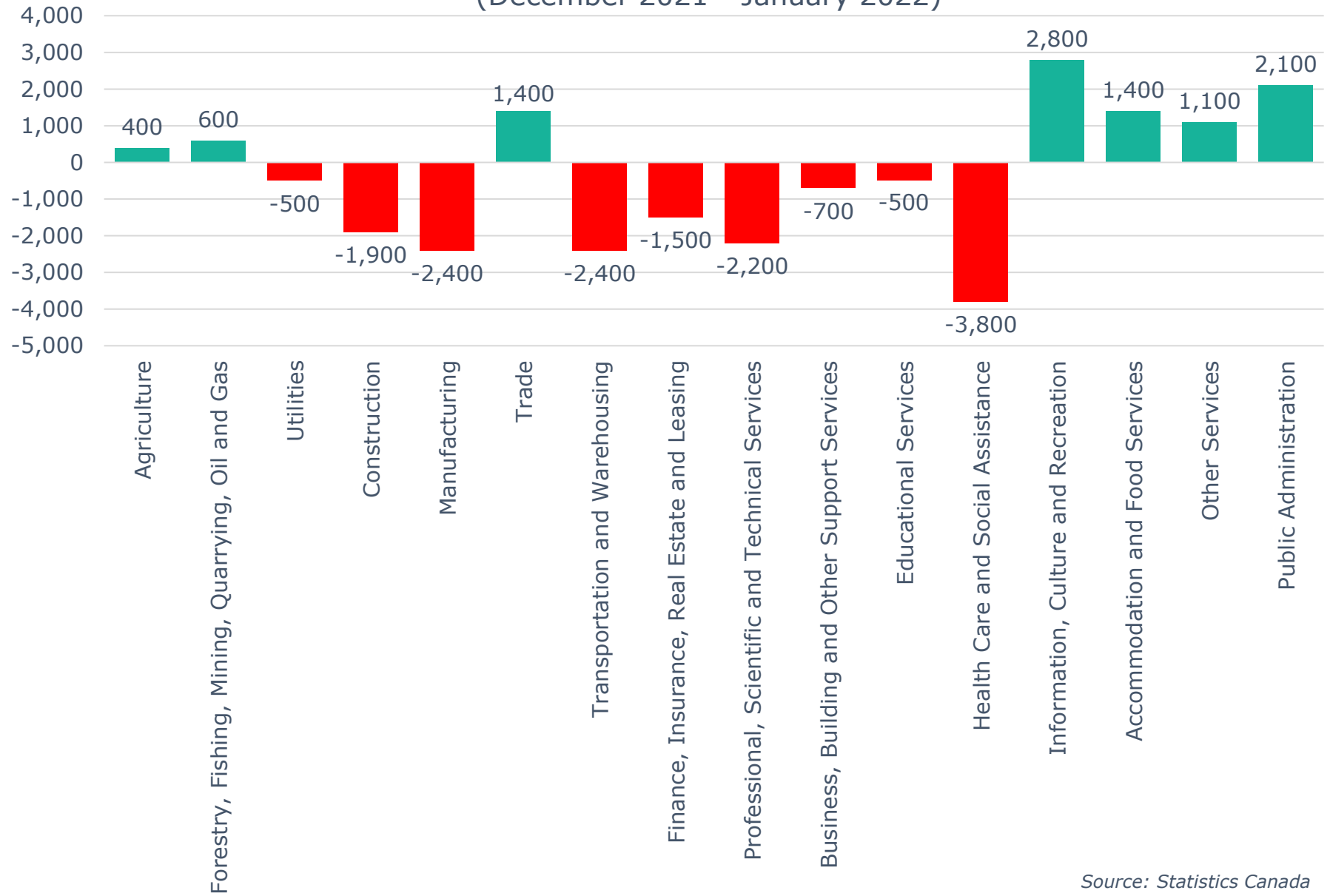
Calgary CMA 12-Month Net Jobs Gained or Lost by Industry (January 2022)



Source: Statistics Canada

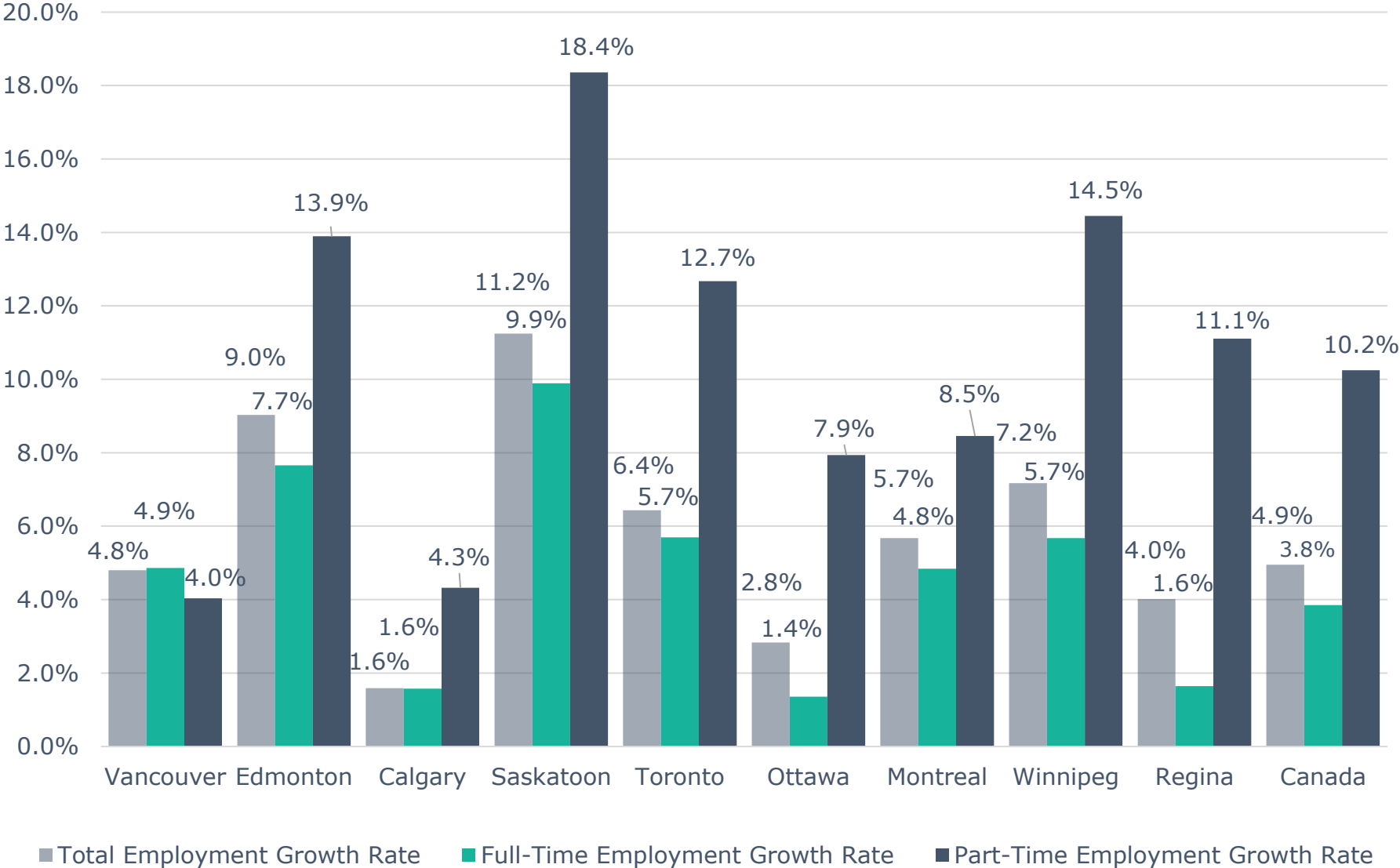
Calgary CMA Monthly Net Jobs Gained or Lost by Industry

(December 2021 - January 2022)



Source: Statistics Canada

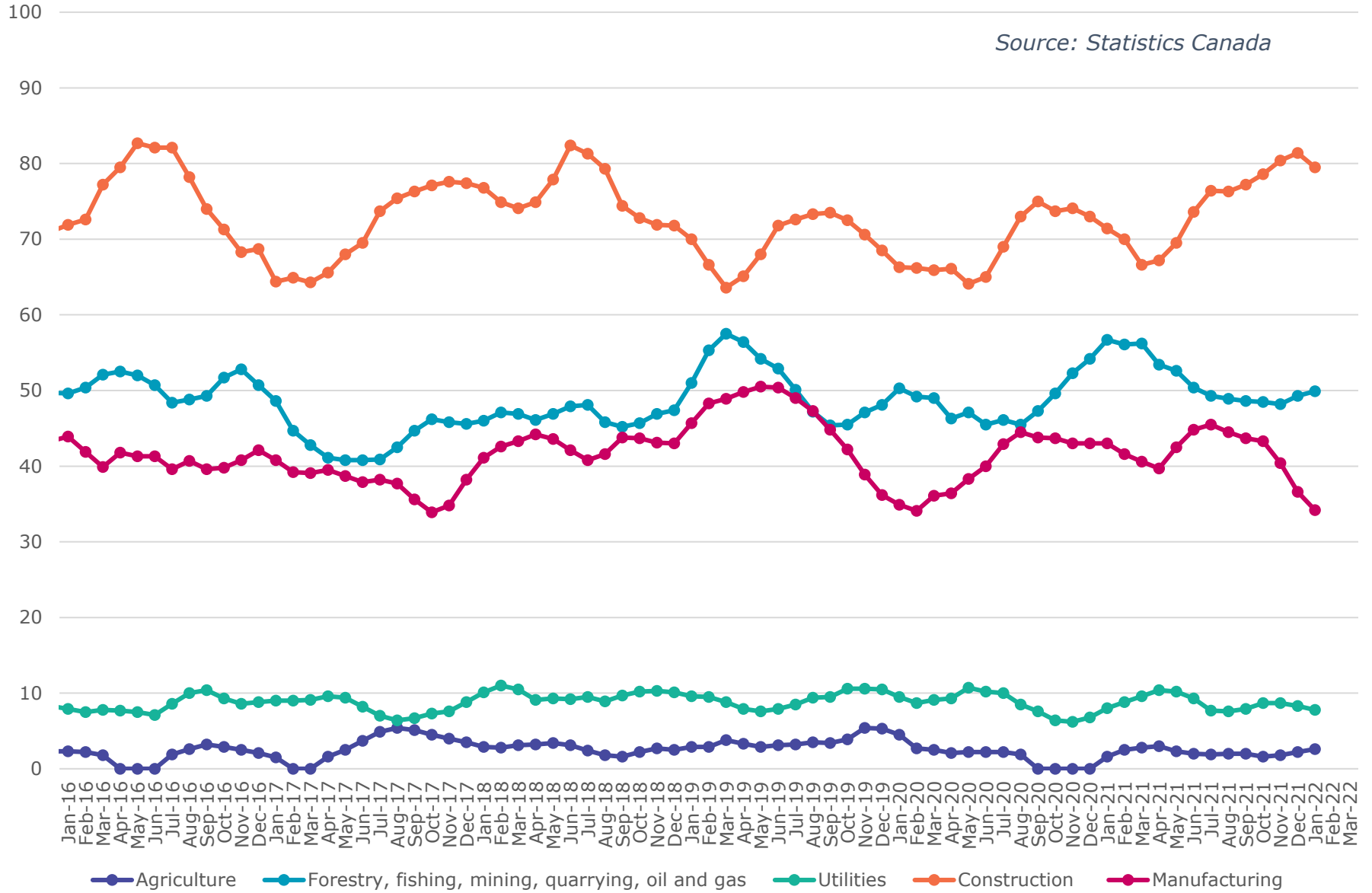
Annual Employment Growth



Source: Statistics Canada, January 2021 - January 2022

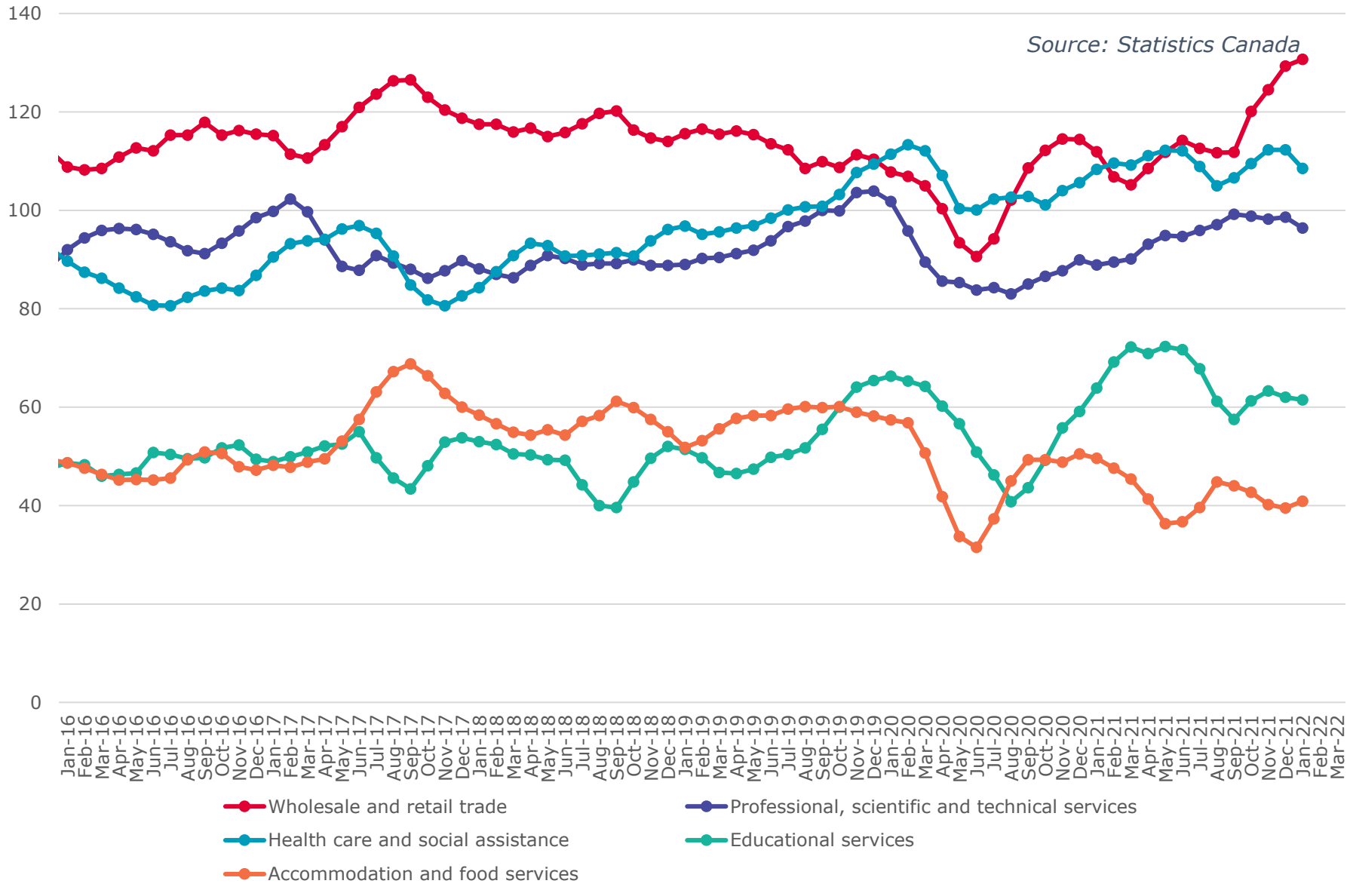
Calgary CMA Goods Producing Sectors - Number of Employees (In thousands)

Source: Statistics Canada



Calgary CMA Largest 5 Services Sector by Number of Employees (In thousands)

Source: Statistics Canada



Calgary CMA Smallest 6 Service Sectors by Number of Employees (In thousands)

