



Labour Force Survey Statistics February 2022

CALGARY CMA

Table 14-10-0380-02 (282-0135) Labour force survey estimates (LFS), by census metropolitan area based on 2011 census boundaries, 3-month moving average, seasonally adjusted, monthly (persons unless otherwise noted)

	February 2021	January 2022	February 2022	# Change January 2022 - February 2022	% Change January 2022 - February 2022	# Change February 2021 - February 2022	% Change February 2021 - February 2022
Population (x 1,000)	1,259.1	1,277.9	1,280.5	2.6	0.2%	21.4	1.7%
Labour force (x 1,000)	901.6	903.0	914.6	11.6	1.3%	13.0	1.4%
Employment (x 1,000)	806.3	826.0	841.1	15.1	1.8%	34.8	4.3%
Unemployment (x 1,000)	95.3	77.0	73.5	-3.5	-4.5%	-21.8	-22.9%
Unemployment rate (rate)	10.6%	8.5%	8.0%	-0.5%		-2.6%	
Participation rate (rate)	71.6%	70.7%	71.4%	0.7%		-0.2%	
Employment rate (rate)	64.0%	64.6%	65.7%	1.1%		1.7%	

CALGARY CMA

Table 14-10-0378-01 (282-0128) Labour force survey estimates (LFS), by census metropolitan area based on 2011 census boundaries, 3-month moving average, unadjusted for seasonality, monthly (persons unless otherwise noted)

	February 2021	January 2022	February 2022	# Change January 2022 - February 2022	% Change January 2022 - February 2022	# Change February 2021 - February 2022	% Change February 2021 - February 2022
Population (x 1,000)	1,259.1	1,277.9	1,280.5	2.6	0.2%	21.4	1.7%
Labour force (x 1,000)	895.0	900.1	906.6	6.5	0.7%	11.6	1.3%
Employment (x 1,000)	801.2	828.8	837.2	8.4	1.0%	36.0	4.5%
Full-time employment (x 1,000)	649.3	669.7	669.5	-0.2	0.0%	20.2	3.1%
Part-time employment (x 1,000)	151.9	159.2	167.6	8.4	5.3%	15.7	10.3%
Unemployment (x 1,000)	93.7	71.3	69.4	-1.9	-2.7%	-24.3	-25.9%
Not in labour force (x 1,000)	364.2	377.8	373.9	-3.9	-1.0%	9.7	2.7%
Unemployment rate (rate)	10.5%	7.9%	7.7%	-0.2%		-2.8%	
Participation rate (rate)	71.1%	70.4%	70.8%	0.4%		-0.3%	
Employment rate (rate)	63.6%	64.9%	65.4%	0.5%		1.8%	

CALGARY CMA

Table: 14-10-0397-01 (282-0130) Labour force survey estimates (LFS), employment by census metropolitan area based on 2011 census boundaries and North American Industry Classification System (NAICS), 3-month moving average, unadjusted for seasonality, monthly (persons x 1,000)

	February 2021	January 2022	February 2022	# Change January 2022 - February 2022	% Change January 2022 - February 2022	# Change February 2021 - February 2022	% Change February 2021 - February 2022
Total Employed - All Industries	801.2	828.8	837.2	8.4	1.0%	36.0	4.5%
Goods-Producing Sector	179.0	174.0	172.5	-1.5	-0.9%	-6.5	-3.6%
Agriculture	2.5	2.6	2.6	0.0	0.0%	0.1	4.0%
Forestry, Fishing, Mining, Quarrying, Oil and Gas	56.1	49.9	52.0	2.1	4.2%	-4.1	-7.3%
Utilities	8.8	7.8	7.4	-0.4	-5.1%	-1.4	-15.9%
Construction	70.0	79.5	77.4	-2.1	-2.6%	7.4	10.6%
Manufacturing	41.6	34.2	33.1	-1.1	-3.2%	-8.5	-20.4%
Services-Producing Sector	622.2	654.9	664.7	9.8	1.5%	42.5	6.8%
Wholesale & Retail Trade	106.8	130.7	135.9	5.2	4.0%	29.1	27.2%
Transportation and Warehousing	49.9	56.9	55.1	-1.8	-3.2%	5.2	10.4%
Finance, Insurance, Real Estate and Leasing	45.5	51.8	50.4	-1.4	-2.7%	4.9	10.8%
Professional, Scientific and Technical Services	89.5	96.4	96.1	-0.3	-0.3%	6.6	7.4%
Business, Building and Other Support Services	25.5	26.2	24.1	-2.1	-8.0%	-1.4	-5.5%
Educational Services	69.2	61.5	62.9	1.4	2.3%	-6.3	-9.1%
Health Care and Social Assistance	109.6	108.5	108.0	-0.5	-0.5%	-1.6	-1.5%
Information, Culture and Recreation	25.9	31.6	36.0	4.4	13.9%	10.1	39.0%
Accommodation and Food Services	47.6	40.9	42.5	1.6	3.9%	-5.1	-10.7%
Other Services	34.1	24.3	26.0	1.7	7.0%	-8.1	-23.8%
Public Administration	18.7	26.1	27.8	1.7	6.5%	9.1	48.7%

Province of Alberta

Table: 14-10-0287-01 (282-0087) Labour force survey estimates (LFS), by sex and age group, seasonally adjusted, monthly (persons unless otherwise noted)

	February 2021	January 2022	February 2022	# Change January 2022 - February 2022	% Change January 2022 - February 2022	# Change February 2021 - February 2022	% Change February 2021 - February 2022
Population (x 1,000)	3,531.3	3,573.9	3,580.2	6.3	0.2%	48.9	1.4%
Labour force (x 1,000)	2,440.3	2,486.7	2,484.0	-2.7	-0.11%	43.7	1.8%
Employment (x 1,000)	2,198.2	2,306.8	2,315.0	8.2	0.4%	116.8	5.3%
Employment full-time (x 1,000)	1,781.0	1,864.3	1,854.7	-9.6	-0.5%	73.7	4.1%
Employment part-time (x 1,000)	417.3	442.5	460.2	17.7	4.0%	42.9	10.3%
Unemployment (x 1,000)	242.1	179.9	169.0	-10.9	-6.1%	-73.1	-30.2%
Unemployment rate (rate)	9.9%	7.2%	6.8%	-0.4%		-3.1%	
Participation rate (rate)	69.1%	69.6%	69.4%	-0.2%		0.3%	
Employment rate (rate)	62.2%	64.5%	64.7%	0.2%		2.5%	

Province of Alberta

Table: 14-10-0355-01 (282-0088) Labour force survey estimates (LFS), employment by North American Industry Classification System (NAICS), seasonally adjusted, monthly (persons x 1,000)

	February 2021	January 2022	February 2022	# Change January 2022 - February 2022	% Change January 2022 - February 2022	# Change February 2021 - February 2022	% Change February 2021 - February 2022
Total Employed - All Industries	2,198.2	2,306.8	2,315.0	8.2	0.4%	116.8	5.3%
Goods-Producing Sector	541.9	556.5	555.4	-1.1	-0.2%	13.5	2.5%
Agriculture	38.5	33.5	34.9	1.4	4.2%	-3.6	-9.4%
Forestry, Fishing, Mining, Quarrying, Oil and Gas	135.6	146.0	147.1	1.1	0.8%	11.5	8.5%
Utilities	23.8	19.8	18.3	-1.5	-7.6%	-5.5	-23.1%
Construction	224.3	227.9	228.5	0.6	0.3%	4.2	1.9%
Manufacturing	119.7	129.4	126.6	-2.8	-2.2%	6.9	5.8%
Services-Producing Sector	1,656.3	1,750.4	1,759.6	9.2	0.5%	103.3	6.2%
Wholesale & Retail Trade	336.0	354.0	357.7	3.7	1.0%	21.7	6.5%
Transportation and Warehousing	129.9	138.7	126.7	-12.0	-8.7%	-3.2	-2.5%
Finance, Insurance, Real Estate and Leasing	107.6	118.2	113.2	-5.0	-4.2%	5.6	5.2%
Professional, Scientific and Technical Services	174.4	191.1	200.6	9.5	5.0%	26.2	15.0%
Business, Building and Other Support Services	77.0	70.1	72.9	2.8	4.0%	-4.1	-5.3%
Educational Services	161.4	158.2	163.1	4.9	3.1%	1.7	1.1%
Health Care and Social Assistance	308.3	319.4	316.4	-3.0	-0.9%	8.1	2.6%
Information, Culture and Recreation	58.2	75.5	80.3	4.8	6.4%	22.1	38.0%
Accommodation and Food Services	104.5	125.3	129.5	4.2	3.4%	25.0	23.9%
Other Services	99.5	92.7	95.7	3.0	3.2%	-3.8	-3.8%
Public Administration	99.6	107.1	103.6	-3.5	-3.3%	4.0	4.0%

CANADA

Table: 14-10-0287-01 (282-0087) Labour force survey estimates (LFS), by sex and age group, seasonally adjusted, monthly (persons unless otherwise noted)

	February 2021	January 2022	February 2022	# Change January 2022 - February 2022	% Change January 2022 - February 2022	# Change February 2021 - February 2022	% Change February 2021 - February 2022
Population (x 1,000)	31,216.2	31,546.8	31,588.7	41.9	0.1%	372.5	1.2%
Labour force (x 1,000)	20,196.2	20,517.9	20,648.2	130.3	0.64%	452.0	2.2%
Employment (x 1,000)	18,531.2	19,176.1	19,512.7	336.6	1.755%	981.5	5.3%
Employment full-time (x 1,000)	15,220.5	15,714.6	15,836.1	121.5	0.8%	615.6	4.0%
Employment part-time (x 1,000)	3,310.7	3,461.5	3,676.6	215.1	6.2%	365.9	11.1%
Unemployment (x 1,000)	1,665.1	1,341.8	1,135.5	-206.3	-15.4%	-529.6	-31.8%
Unemployment rate (rate)	8.2%	6.5%	5.5%	-1.0%		-2.7%	
Participation rate (rate)	64.7%	65.0%	65.4%	0.4%		0.7%	
Employment rate (rate)	59.4%	60.8%	61.8%	1.0%		2.4%	

CANADA

Table: 14-10-0355-01 (282-0088) Labour force survey estimates (LFS), employment by North American Industry Classification System (NAICS), seasonally adjusted, monthly (persons x 1,000)

	February 2021	January 2022	February 2022	# Change January 2022 - February 2022	% Change January 2022 - February 2022	# Change February 2021 - February 2022	% Change February 2021 - February 2022
Total Employed - All Industries	18,531.2	19,176.1	19,512.7	336.6	1.8%	981.5	5.3%
Goods-Producing Sector	3,912.8	3,948.2	3,992.2	44.0	1.1%	79.4	2.0%
Agriculture	262.7	238.0	240.9	2.9	1.2%	-21.8	-8.3%
Forestry, Fishing, Mining, Quarrying, Oil and Gas	316.8	326.4	329.9	3.5	1.1%	13.1	4.1%
Utilities	143.9	145.5	145.0	-0.5	-0.3%	1.1	0.8%
Construction	1,442.4	1,482.9	1,519.9	37.0	2.5%	77.5	5.4%
Manufacturing	1,746.9	1,755.5	1,756.5	1.0	0.1%	9.6	0.5%
Services-Producing Sector	14,618.4	15,227.8	15,520.5	292.7	1.9%	902.1	6.2%
Wholesale and retail trade	2,752.4	2,927.4	2,965.3	37.9	1.3%	212.9	7.7%
Transportation and Warehousing	981.2	1,022.3	1,020.8	-1.5	-0.1%	39.6	4.0%
Finance, Insurance, Real Estate and Leasing	1,278.2	1,323.4	1,336.6	13.2	1.0%	58.4	4.6%
Professional, Scientific and Technical Services	1,623.8	1,717.7	1,765.0	47.3	2.8%	141.2	8.7%
Business, Building and Other Support Services	695.5	695.7	699.3	3.6	0.5%	3.8	0.5%
Educational Services	1,433.6	1,467.8	1,477.0	9.2	0.6%	43.4	3.0%
Health Care and Social Assistance	2,503.9	2,623.4	2,639.8	16.4	0.6%	135.9	5.4%
Information, Culture and Recreation	656.5	735.0	807.7	72.7	9.9%	151.2	23.0%
Accommodation and Food Services	902.3	901.8	1,015.6	113.8	12.6%	113.3	12.6%
Other Services	758.5	711.3	709.0	-2.3	-0.3%	-49.5	-6.5%
Public Administration	1,032.6	1,102.1	1,084.5	-17.6	-1.6%	51.9	5.0%

Unemployment Rates for Key Markets

	February 2021	January 2022	February 2022
Calgary	10.6%	8.5%	8.0%
Alberta	9.9%	7.2%	6.8%
Canada	8.2%	6.5%	5.5%
Montreal	8.2%	5.2%	5.2%
Ottawa	6.5%	4.7%	4.9%
Toronto	11.1%	4.7%	4.9%
Edmonton	11.6%	6.6%	6.9%
Vancouver	7.9%	5.7%	5.4%
Winnipeg	8.3%	5.0%	4.9%
Regina	8.5%	5.3%	5.4%
Saskatoon	8.4%	5.2%	4.8%
Wood Buffalo			

Facts & Figures

Highest Unemployment Rate during 2008-2010 downturn: 7.5% in January 2010

Highest Unemployment Rate during 1992-1996 downturn: 10.8% in July 1993
Number of additional jobs we would need to lose to reach this level: 25,277
(or amount labour force would need to grow by with no additional new jobs)

Highest Unemployment Rate during 1982-1985 downturn: 13.2% in March 1983
Number of additional jobs we would need to lose to reach this level: 47,227
(or amount labour force would need to grow by with no additional new jobs)

The last time Calgary had negative employment growth:

Between November 2009 and May 2010 Calgary lost 12,900 jobs.
Between November 2008 and July 2009 Calgary lost 27,000 jobs.
From peak employment in November 2008 to the lowest level reached in May 2010 - 33,400 jobs were lost in Calgary.

Calgary lost a small number of jobs July-August 2012 (2,400), again in March 2013 (3,200), and again (3,300) in February to April 2014.

Calgary

Number of jobs gained/lost in 2014:	11,300
Number of jobs gained/lost in 2015:	(16,200)
Number of jobs gained/lost December 2014 to June 2016:	(23,100)
Number of jobs gained/lost in 2016:	12,700
Number of jobs gained/lost in 2017:	14,400
Number of jobs gained/lost in 2018:	8,800
Number of jobs gained/lost in 2019:	14,400
Number of jobs gained/lost in 2020:	(5,600)
Number of jobs gained/lost in 2021:	7,100
Number of jobs gained/lost in 2022 (to-date):	12,900

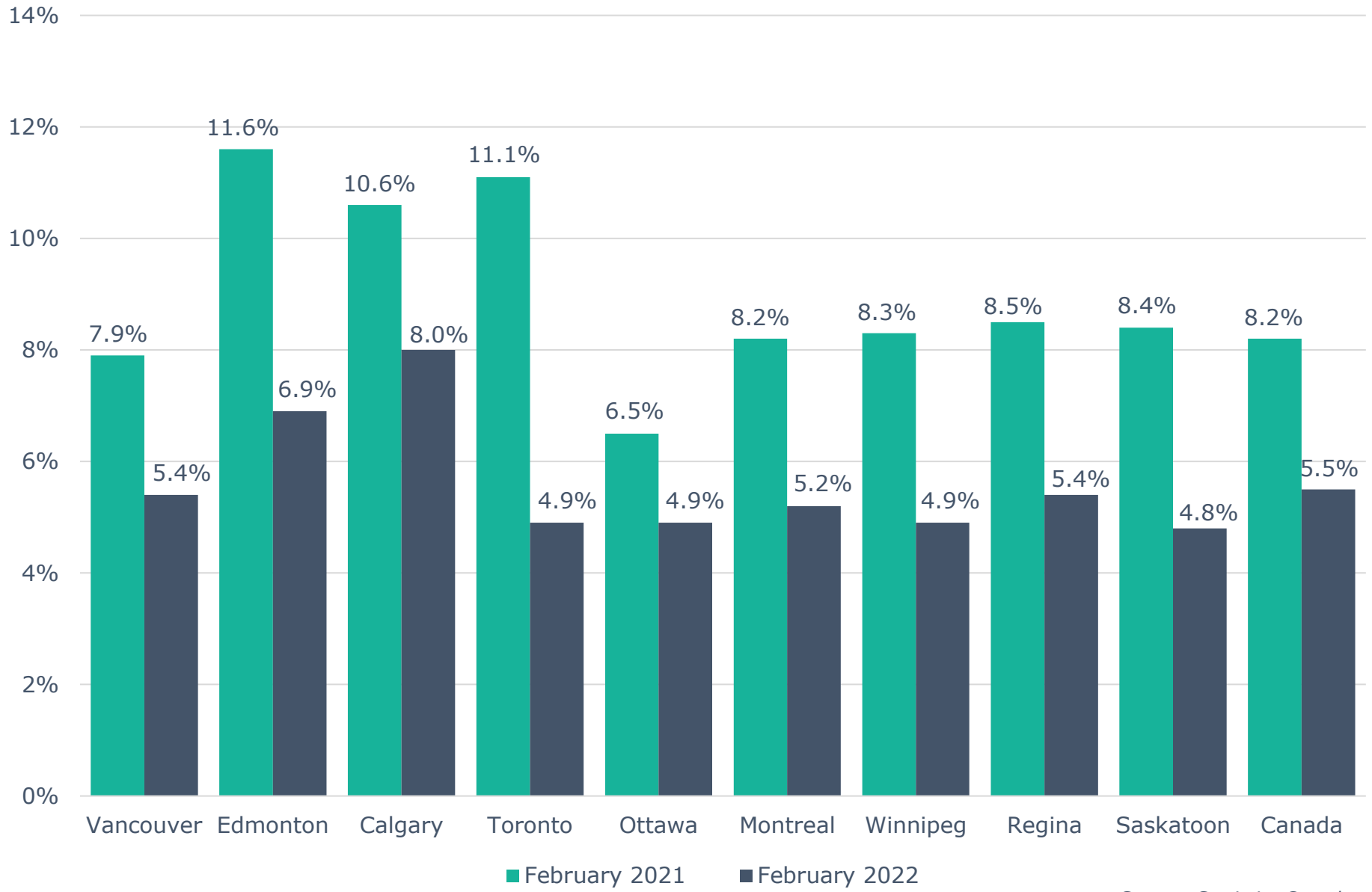
Alberta

Number of jobs gained/lost in 2014:	46,000
Number of jobs gained/lost in 2015:	(40,100)
Number of jobs gained/lost December 2014 to June 2016:	(73,800)
Number of jobs gained/lost in 2016:	(21,500)
Number of jobs gained/lost in 2017:	57,300
Number of jobs gained/lost in 2018:	21,000
Number of jobs gained/lost in 2019:	(3,700)
Number of jobs gained/lost in 2020:	(109,900)
Number of jobs gained/lost in 2021:	139,200
Number of jobs gained/lost in 2022 (to-date):	15,200

Source: Calgary - Table 14-10-0294-02 (282-0135); Alberta - 14-10-0287-01 (282-0087); Statistics Canada

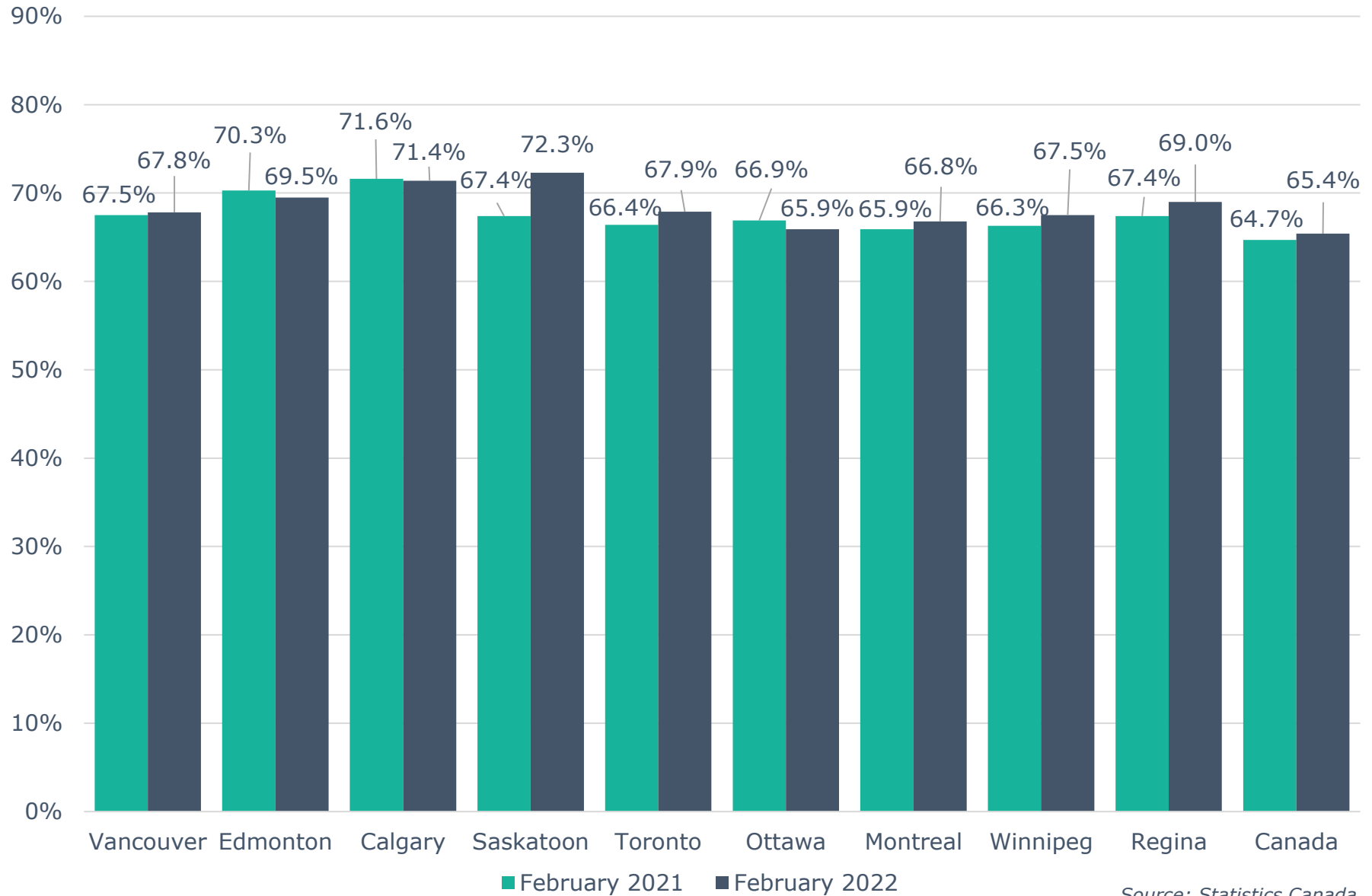
Note: Labour Force Survey, Employment, Seasonally Adjusted

Unemployment Rate Across Canada



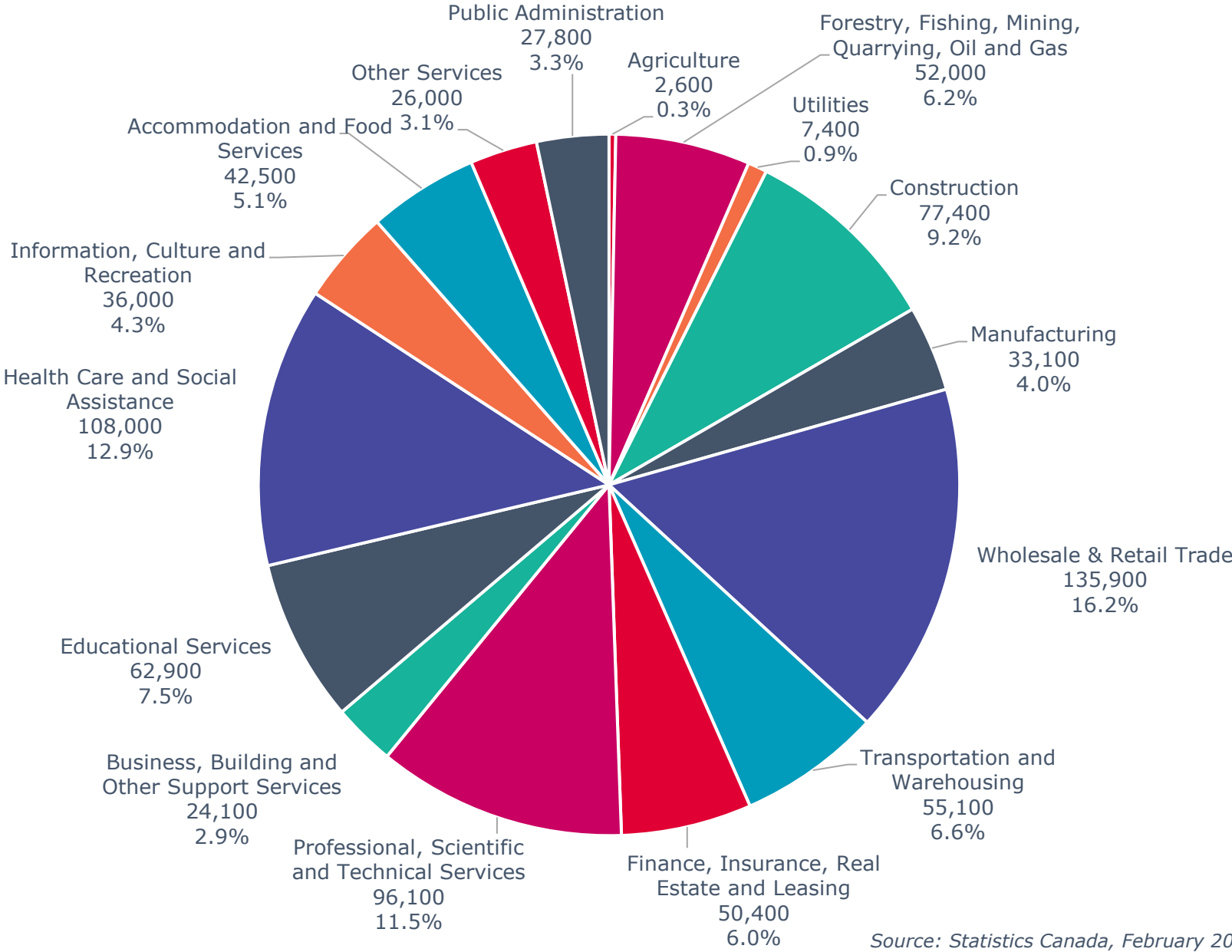
Source: Statistics Canada

Labour Force Participation Rate Across Canada



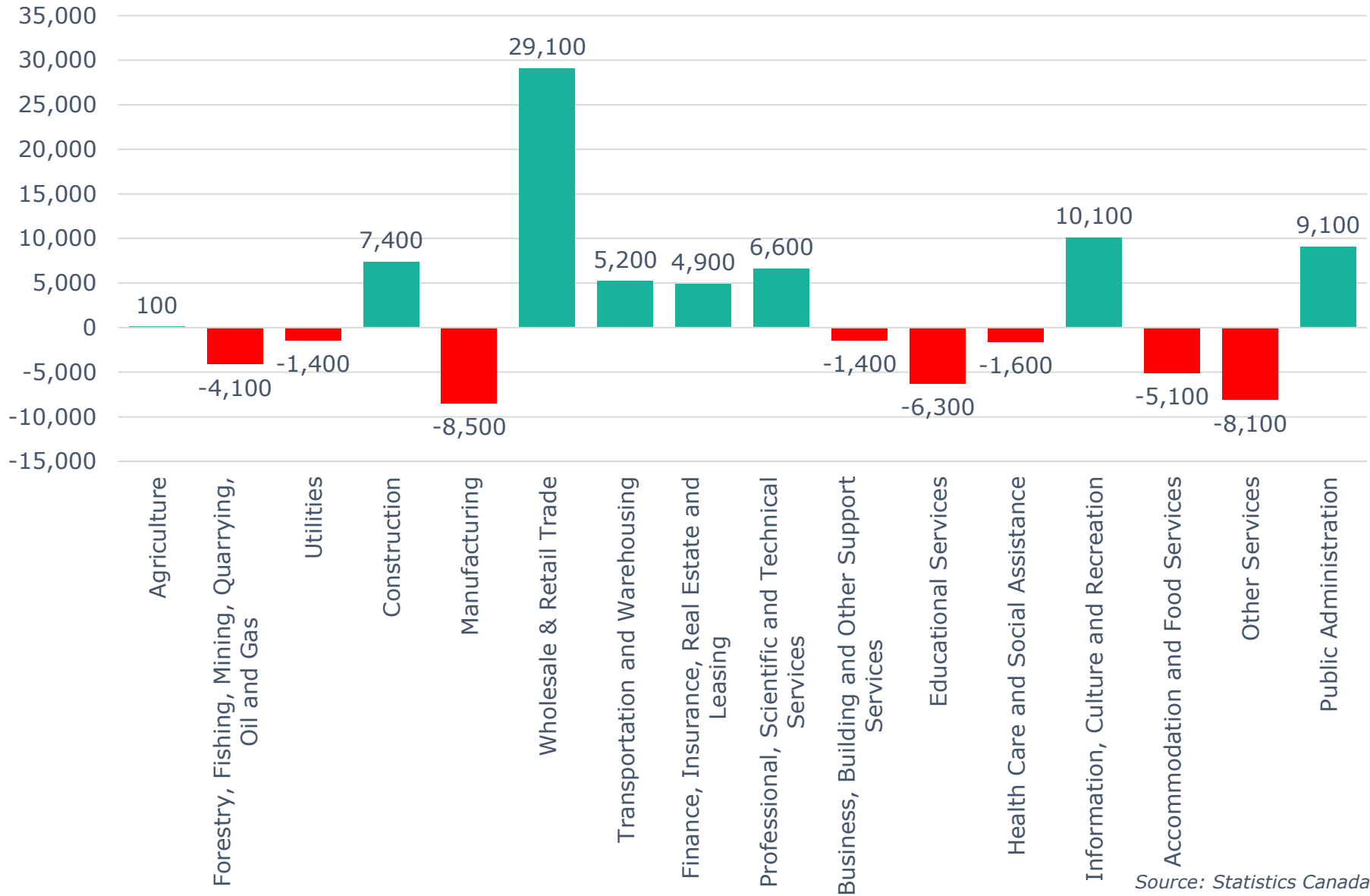
Source: Statistics Canada

Calgary CMA Employment by Industry (837,200)



Source: Statistics Canada, February 2022

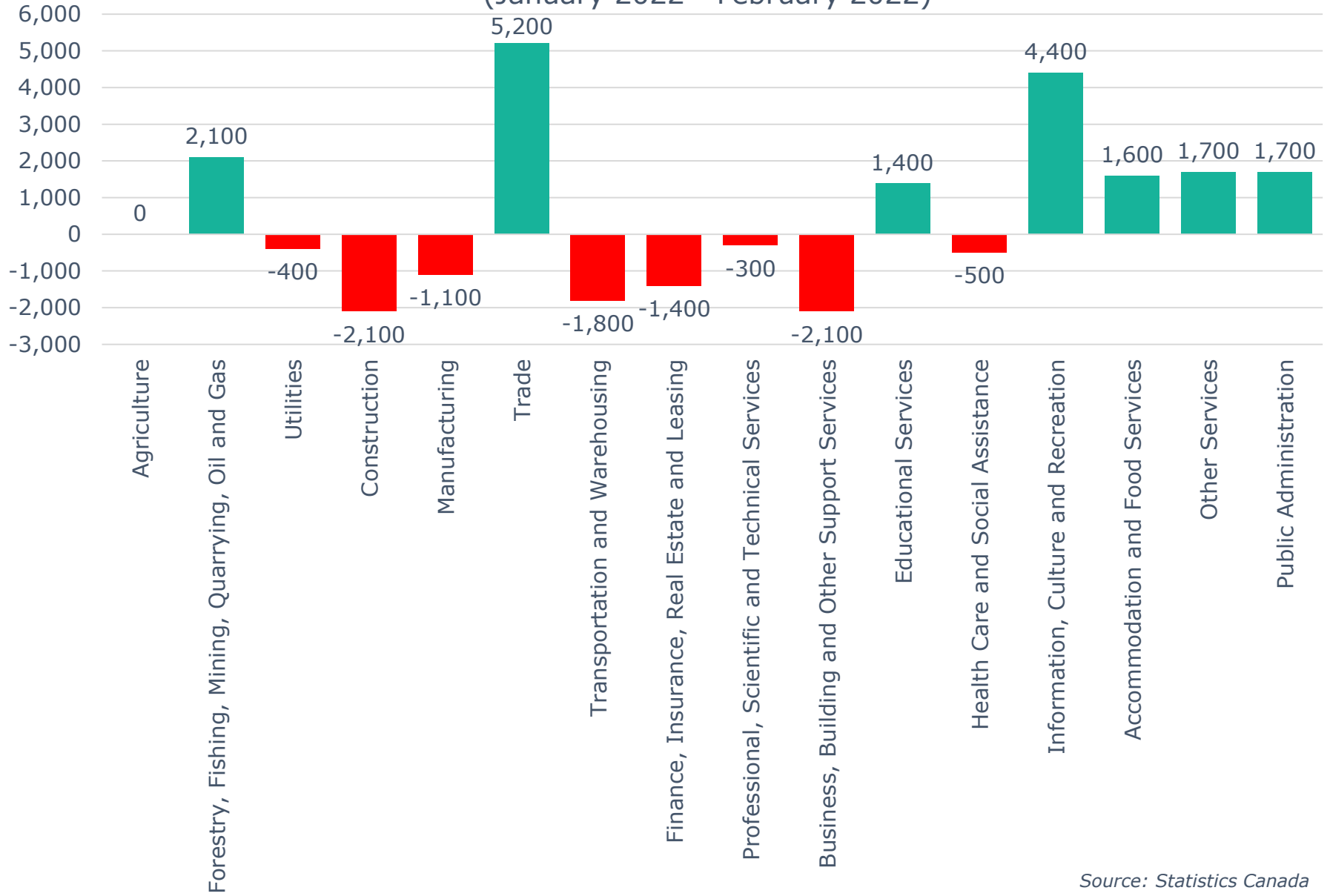
Calgary CMA 12-Month Net Jobs Gained or Lost by Industry (February 2022)



Source: Statistics Canada

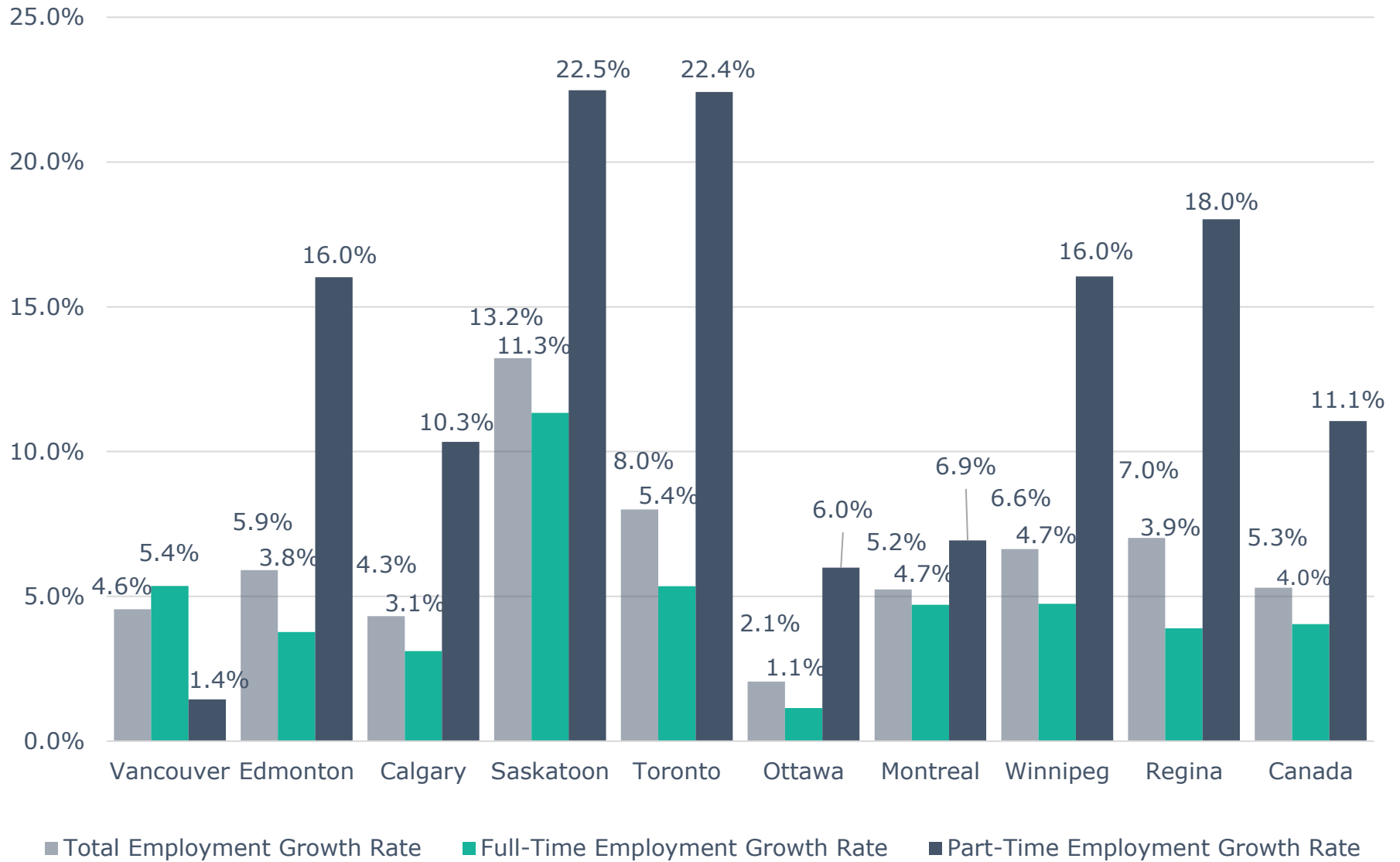
Calgary CMA Monthly Net Jobs Gained or Lost by Industry

(January 2022 - February 2022)



Source: Statistics Canada

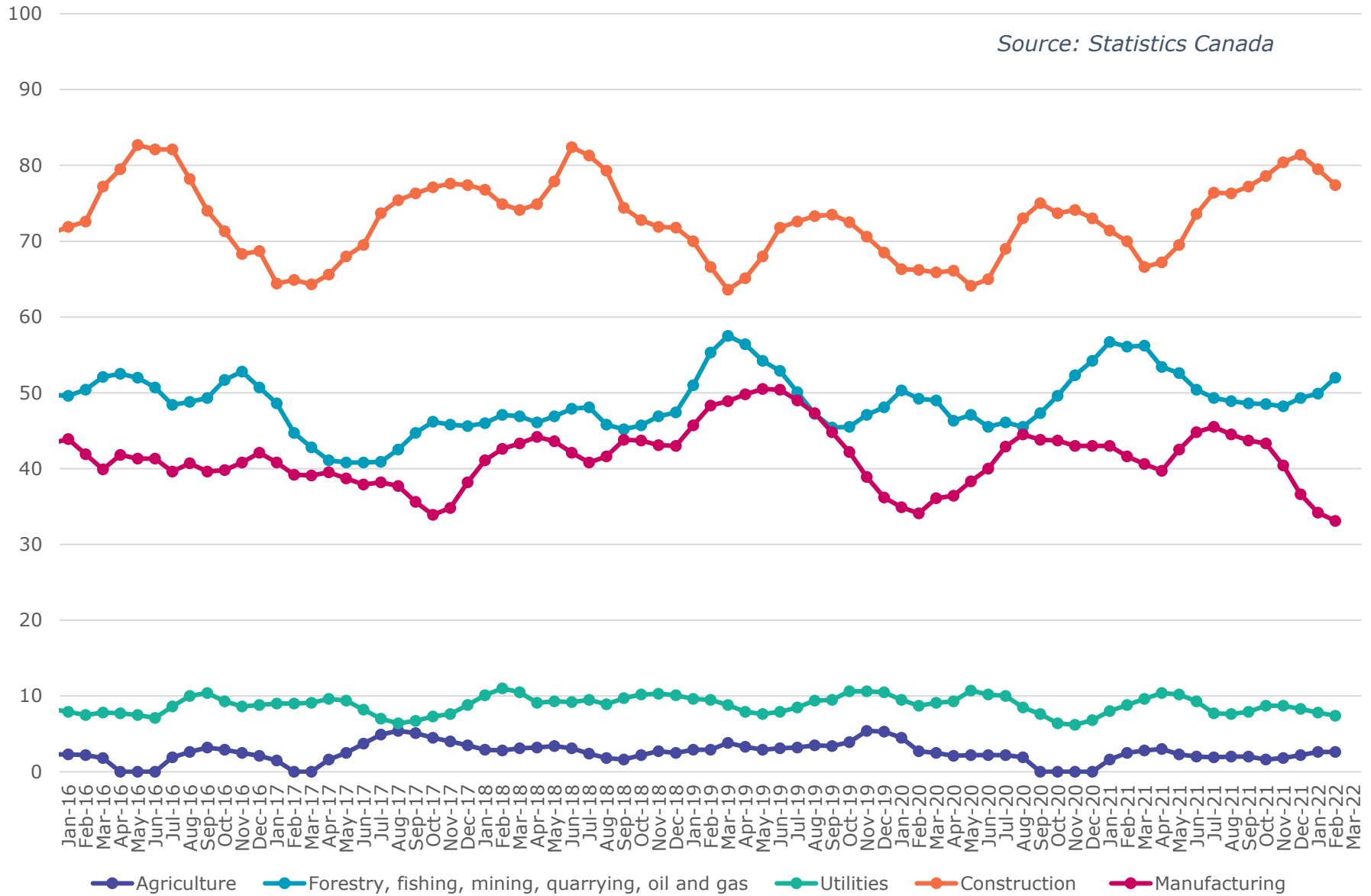
Annual Employment Growth



Source: Statistics Canada, February 2021 - February 2022

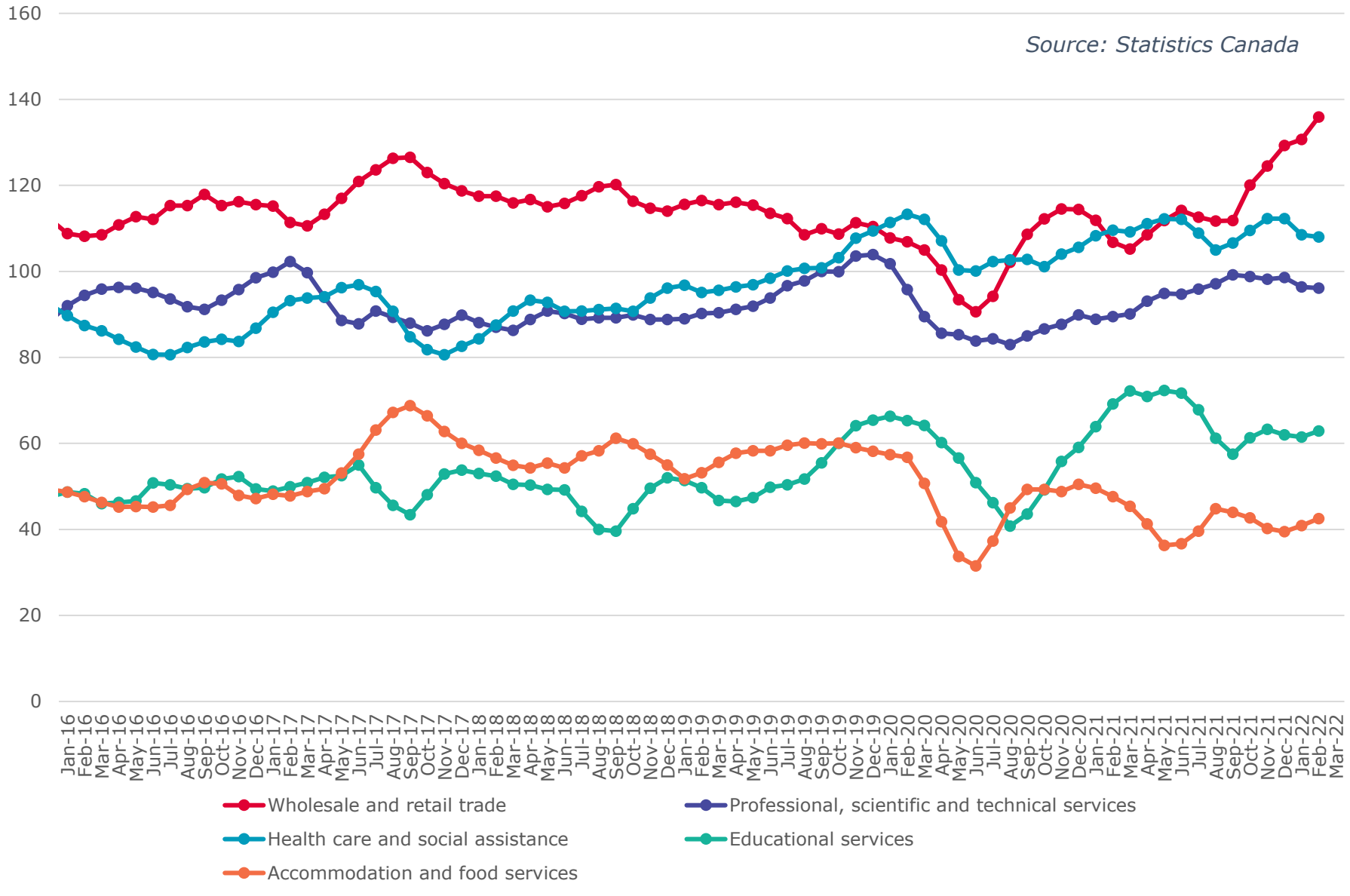
Calgary CMA Goods Producing Sectors - Number of Employees (In thousands)

Source: Statistics Canada



Calgary CMA Largest 5 Services Sector by Number of Employees (In thousands)

Source: Statistics Canada



Calgary CMA Smallest 6 Service Sectors by Number of Employees (In thousands)

Source: Statistics Canada

