



Labour Force Survey Statistics April 2022

CALGARY CMA

| Table 14-10-0380-02 (282-0135) Labour force survey estimates (LFS), by census metropolitan area based on 2011 census boundaries, 3-month moving average, seasonally adjusted, monthly (persons unless otherwise noted) | | | | | | | |
|---|------------|------------|------------|--|--|--|--|
| | April 2021 | March 2022 | April 2022 | # Change March 2022 - April 2022 | % Change March 2022 - April 2022 | # Change April 2021 - April 2022 | % Change April 2021 - April 2022 |
| Population (x 1,000) | 1,261.9 | 1,283.2 | 1,285.9 | 2.7 | 0.2% | 24.0 | 1.9% |
| Labour force (x 1,000) | 887.9 | 919.0 | 923.7 | 4.7 | 0.5% | 35.8 | 4.0% |
| Employment (x 1,000) | 805.6 | 848.5 | 857.1 | 8.6 | 1.0% | 51.5 | 6.4% |
| Unemployment (x 1,000) | 82.3 | 70.5 | 66.7 | -3.8 | -5.4% | -15.6 | -19.0% |
| Unemployment rate (rate) | 9.3% | 7.7% | 7.2% | -0.5% | | -2.1% | |
| Participation rate (rate) | 70.4% | 71.6% | 71.8% | 0.2% | | 1.4% | |
| Employment rate (rate) | 63.8% | 66.1% | 66.7% | 0.6% | | 2.9% | |

CALGARY CMA

| Table 14-10-0378-01 (282-0128) Labour force survey estimates (LFS), by census metropolitan area based on 2011 census boundaries, 3-month moving average, unadjusted for seasonality, monthly (persons unless otherwise noted) | | | | | | | |
|--|------------|------------|------------|--|--|--|--|
| | April 2021 | March 2022 | April 2022 | # Change March 2022 - April 2022 | % Change March 2022 - April 2022 | # Change April 2021 - April 2022 | % Change April 2021 - April 2022 |
| Population (x 1,000) | 1,261.9 | 1,283.2 | 1,285.9 | 2.7 | 0.2% | 24.0 | 1.9% |
| Labour force (x 1,000) | 879.8 | 909.6 | 913.8 | 4.2 | 0.5% | 34.0 | 3.9% |
| Employment (x 1,000) | 797.0 | 839.8 | 848.3 | 8.5 | 1.0% | 51.3 | 6.4% |
| Full-time employment (x 1,000) | 645.3 | 664.8 | 670.7 | 5.9 | 0.9% | 25.4 | 3.9% |
| Part-time employment (x 1,000) | 151.6 | 175.0 | 177.6 | 2.6 | 1.5% | 26.0 | 17.2% |
| Unemployment (x 1,000) | 82.8 | 69.8 | 65.5 | -4.3 | -6.2% | -17.3 | -20.9% |
| Not in labour force (x 1,000) | 382.1 | 373.6 | 372.1 | -1.5 | -0.4% | -10.0 | -2.6% |
| Unemployment rate (rate) | 9.4% | 7.7% | 7.2% | -0.5% | | -2.2% | |
| Participation rate (rate) | 69.7% | 70.9% | 71.1% | 0.2% | | 1.4% | |
| Employment rate (rate) | 63.2% | 65.4% | 66.0% | 0.6% | | 2.8% | |

CALGARY CMA

Table: 14-10-0397-01 (282-0130) Labour force survey estimates (LFS), employment by census metropolitan area based on 2011 census boundaries and North American Industry Classification System (NAICS), 3-month moving average, unadjusted for seasonality, monthly (persons x 1,000)

| | April 2021 | March 2022 | April 2022 | # Change March 2022 - April 2022 | % Change March 2022 - April 2022 | # Change April 2021 - April 2022 | % Change April 2021 - April 2022 |
|---|------------|------------|------------|--|--|--|--|
| Total Employed - All Industries | 797.0 | 839.8 | 848.3 | 8.5 | 1.0% | 51.3 | 6.4% |
| Goods-Producing Sector | 173.8 | 171.9 | 168.7 | -3.2 | -1.9% | -5.1 | -2.9% |
| Agriculture | 3.0 | 2.2 | 2.1 | -0.1 | -4.5% | -0.9 | -30.0% |
| Forestry, Fishing, Mining, Quarrying, Oil and Gas | 53.4 | 52.8 | 53.1 | 0.3 | 0.6% | -0.3 | -0.6% |
| Utilities | 10.4 | 6.8 | 6.3 | -0.5 | -7.4% | -4.1 | -39.4% |
| Construction | 67.2 | 76.5 | 76.1 | -0.4 | -0.5% | 8.9 | 13.2% |
| Manufacturing | 39.7 | 33.7 | 31.1 | -2.6 | -7.7% | -8.6 | -21.7% |
| Services-Producing Sector | 623.2 | 667.9 | 679.6 | 11.7 | 1.8% | 56.4 | 9.1% |
| Wholesale & Retail Trade | 108.5 | 141.5 | 145.6 | 4.1 | 2.9% | 37.1 | 34.2% |
| Transportation and Warehousing | 49.7 | 50.8 | 49.3 | -1.5 | -3.0% | -0.4 | -0.8% |
| Finance, Insurance, Real Estate and Leasing | 47.2 | 46.7 | 46.7 | 0.0 | 0.0% | -0.5 | -1.1% |
| Professional, Scientific and Technical Services | 93.1 | 95.9 | 100.0 | 4.1 | 4.3% | 6.9 | 7.4% |
| Business, Building and Other Support Services | 24.8 | 24.2 | 24.0 | -0.2 | -0.8% | -0.8 | -3.2% |
| Educational Services | 70.9 | 65.7 | 66.1 | 0.4 | 0.6% | -4.8 | -6.8% |
| Health Care and Social Assistance | 111.1 | 104.7 | 104.9 | 0.2 | 0.2% | -6.2 | -5.6% |
| Information, Culture and Recreation | 23.1 | 40.0 | 40.6 | 0.6 | 1.5% | 17.5 | 75.8% |
| Accommodation and Food Services | 41.3 | 45.2 | 48.9 | 3.7 | 8.2% | 7.6 | 18.4% |
| Other Services | 35.7 | 24.4 | 21.4 | -3.0 | -12.3% | -14.3 | -40.1% |
| Public Administration | 17.8 | 28.9 | 32.0 | 3.1 | 10.7% | 14.2 | 79.8% |

Province of Alberta

| Table: 14-10-0287-01 (282-0087) Labour force survey estimates (LFS), by sex and age group, seasonally adjusted, monthly (persons unless otherwise noted) | | | | | | | |
|---|------------|------------|------------|--|--|--|--|
| | April 2021 | March 2022 | April 2022 | # Change March 2022 - April 2022 | % Change March 2022 - April 2022 | # Change April 2021 - April 2022 | % Change April 2021 - April 2022 |
| Population (x 1,000) | 3,535.3 | 3,586.5 | 3,593.3 | 6.8 | 0.2% | 58.0 | 1.6% |
| Labour force (x 1,000) | 2,441.5 | 2,484.7 | 2,485.0 | 0.3 | 0.01% | 43.5 | 1.8% |
| Employment (x 1,000) | 2,222.7 | 2,322.2 | 2,338.2 | 16.0 | 0.7% | 115.5 | 5.2% |
| Employment full-time (x 1,000) | 1,818.8 | 1,870.4 | 1,880.2 | 9.8 | 0.5% | 61.4 | 3.4% |
| Employment part-time (x 1,000) | 404.0 | 451.8 | 457.9 | 6.1 | 1.4% | 53.9 | 13.3% |
| Unemployment (x 1,000) | 218.8 | 162.5 | 146.8 | -15.7 | -9.7% | -72.0 | -32.9% |
| Unemployment rate (rate) | 9.0% | 6.5% | 5.9% | -0.6% | | -3.1% | |
| Participation rate (rate) | 69.1% | 69.3% | 69.2% | -0.1% | | 0.1% | |
| Employment rate (rate) | 62.9% | 64.7% | 65.1% | 0.4% | | 2.2% | |

Province of Alberta

Table: 14-10-0355-01 (282-0088) Labour force survey estimates (LFS), employment by North American Industry Classification System (NAICS), seasonally adjusted, monthly (persons x 1,000)

| | April 2021 | March 2022 | April 2022 | # Change March 2022 - April 2022 | % Change March 2022 - April 2022 | # Change April 2021 - April 2022 | % Change April 2021 - April 2022 |
|---|------------|------------|------------|--|--|--|--|
| Total Employed - All Industries | 2,222.7 | 2,322.2 | 2,338.1 | 15.9 | 0.7% | 115.4 | 5.2% |
| Goods-Producing Sector | 554.5 | 549.4 | 548.0 | -1.4 | -0.3% | -6.5 | -1.2% |
| Agriculture | 37.1 | 32.5 | 33.8 | 1.3 | 4.0% | -3.3 | -8.9% |
| Forestry, Fishing, Mining, Quarrying, Oil and Gas | 137.6 | 148.6 | 147.4 | -1.2 | -0.8% | 9.8 | 7.1% |
| Utilities | 25.0 | 17.4 | 17.0 | -0.4 | -2.3% | -8.0 | -32.0% |
| Construction | 226.8 | 225.7 | 225.1 | -0.6 | -0.3% | -1.7 | -0.7% |
| Manufacturing | 128.0 | 125.3 | 124.6 | -0.7 | -0.6% | -3.4 | -2.7% |
| Services-Producing Sector | 1,668.2 | 1,772.7 | 1,790.2 | 17.5 | 1.0% | 122.0 | 7.3% |
| Wholesale & Retail Trade | 332.9 | 376.1 | 387.3 | 11.2 | 3.0% | 54.4 | 16.3% |
| Transportation and Warehousing | 123.2 | 121.1 | 124.0 | 2.9 | 2.4% | 0.8 | 0.6% |
| Finance, Insurance, Real Estate and Leasing | 113.9 | 112.6 | 114.4 | 1.8 | 1.6% | 0.5 | 0.4% |
| Professional, Scientific and Technical Services | 183.8 | 195.1 | 196.0 | 0.9 | 0.5% | 12.2 | 6.6% |
| Business, Building and Other Support Services | 74.1 | 79.0 | 75.1 | -3.9 | -4.9% | 1.0 | 1.3% |
| Educational Services | 168.1 | 164.3 | 166.9 | 2.6 | 1.6% | -1.2 | -0.7% |
| Health Care and Social Assistance | 308.9 | 312.9 | 317.4 | 4.5 | 1.4% | 8.5 | 2.8% |
| Information, Culture and Recreation | 62.3 | 81.8 | 80.2 | -1.6 | -2.0% | 17.9 | 28.7% |
| Accommodation and Food Services | 100.4 | 134.2 | 135.3 | 1.1 | 0.8% | 34.9 | 34.8% |
| Other Services | 102.0 | 91.9 | 88.3 | -3.6 | -3.9% | -13.7 | -13.4% |
| Public Administration | 98.8 | 103.7 | 105.2 | 1.5 | 1.4% | 6.4 | 6.5% |

CANADA

Table: 14-10-0287-01 (282-0087) Labour force survey estimates (LFS), by sex and age group, seasonally adjusted, monthly (persons unless otherwise noted)

| | April 2021 | March 2022 | April 2022 | # Change March 2022 - April 2022 | % Change March 2022 - April 2022 | # Change April 2021 - April 2022 | % Change April 2021 - April 2022 |
|--------------------------------|------------|------------|------------|--|--|--|--|
| Population (x 1,000) | 31,251.6 | 31,626.9 | 31,663.2 | 36.3 | 0.1% | 411.6 | 1.3% |
| Labour force (x 1,000) | 20,267.5 | 20,685.3 | 20,686.3 | 1.0 | 0.00% | 418.8 | 2.1% |
| Employment (x 1,000) | 18,627.2 | 19,585.2 | 19,600.5 | 15.3 | 0.078% | 973.3 | 5.2% |
| Employment full-time (x 1,000) | 15,266.5 | 15,928.8 | 15,897.2 | -31.6 | -0.2% | 630.7 | 4.1% |
| Employment part-time (x 1,000) | 3,360.7 | 3,656.3 | 3,703.4 | 47.1 | 1.3% | 342.7 | 10.2% |
| Unemployment (x 1,000) | 1,640.3 | 1,100.2 | 1,085.8 | -14.4 | -1.3% | -554.5 | -33.8% |
| Unemployment rate (rate) | 8.1% | 5.3% | 5.2% | -0.1% | | -2.9% | |
| Participation rate (rate) | 64.9% | 65.4% | 65.3% | -0.1% | | 0.4% | |
| Employment rate (rate) | 59.6% | 61.9% | 61.9% | 0.0% | | 2.3% | |

CANADA

Table: 14-10-0355-01 (282-0088) Labour force survey estimates (LFS), employment by North American Industry Classification System (NAICS), seasonally adjusted, monthly (persons x 1,000)

| | April 2021 | March 2022 | April 2022 | # Change March 2022 - April 2022 | % Change March 2022 - April 2022 | # Change April 2021 - April 2022 | % Change April 2021 - April 2022 |
|---|------------|------------|------------|--|--|--|--|
| Total Employed - All Industries | 18,627.2 | 19,585.2 | 19,600.5 | 15.3 | 0.1% | 973.3 | 5.2% |
| Goods-Producing Sector | 3,944.2 | 4,022.8 | 4,006.8 | -16.0 | -0.4% | 62.6 | 1.6% |
| Agriculture | 260.8 | 246.7 | 245.7 | -1.0 | -0.4% | -15.1 | -5.8% |
| Forestry, Fishing, Mining, Quarrying, Oil and Gas | 329.0 | 338.7 | 337.0 | -1.7 | -0.5% | 8.0 | 2.4% |
| Utilities | 143.4 | 144.0 | 146.5 | 2.5 | 1.7% | 3.1 | 2.2% |
| Construction | 1,455.4 | 1,533.9 | 1,513.2 | -20.7 | -1.3% | 57.8 | 4.0% |
| Manufacturing | 1,755.5 | 1,759.6 | 1,764.3 | 4.7 | 0.3% | 8.8 | 0.5% |
| Services-Producing Sector | 14,683.0 | 15,562.4 | 15,593.8 | 31.4 | 0.2% | 910.8 | 6.2% |
| Wholesale and retail trade | 2,755.1 | 2,975.3 | 2,957.4 | -17.9 | -0.6% | 202.3 | 7.3% |
| Transportation and Warehousing | 968.4 | 1,011.0 | 1,017.7 | 6.7 | 0.7% | 49.3 | 5.1% |
| Finance, Insurance, Real Estate and Leasing | 1,293.8 | 1,341.6 | 1,340.0 | -1.6 | -0.1% | 46.2 | 3.6% |
| Professional, Scientific and Technical Services | 1,644.6 | 1,754.5 | 1,769.6 | 15.1 | 0.9% | 125.0 | 7.6% |
| Business, Building and Other Support Services | 699.0 | 708.0 | 704.7 | -3.3 | -0.5% | 5.7 | 0.8% |
| Educational Services | 1,432.8 | 1,475.3 | 1,487.8 | 12.5 | 0.8% | 55.0 | 3.8% |
| Health Care and Social Assistance | 2,543.4 | 2,634.6 | 2,623.1 | -11.5 | -0.4% | 79.7 | 3.1% |
| Information, Culture and Recreation | 691.8 | 812.1 | 824.7 | 12.6 | 1.6% | 132.9 | 19.2% |
| Accommodation and Food Services | 864.5 | 1,030.6 | 1,034.8 | 4.2 | 0.4% | 170.3 | 19.7% |
| Other Services | 746.5 | 723.1 | 721.4 | -1.7 | -0.2% | -25.1 | -3.4% |
| Public Administration | 1,043.2 | 1,096.2 | 1,112.7 | 16.5 | 1.5% | 69.5 | 6.7% |

Unemployment Rates for Key Markets

| | April 2021 | March 2022 | April 2022 |
|---------------------|------------|------------|------------|
| Calgary | 9.3% | 7.7% | 7.2% |
| Alberta | 9.0% | 6.5% | 5.9% |
| Canada | 8.1% | 5.3% | 5.2% |
| Montreal | 7.7% | 5.1% | 4.8% |
| Ottawa | 6.7% | 4.9% | 4.6% |
| Toronto | 9.5% | 4.9% | 4.6% |
| Edmonton | 10.5% | 7.1% | 6.9% |
| Vancouver | 7.4% | 5.4% | 5.4% |
| Winnipeg | 7.5% | 5.1% | 5.3% |
| Regina | 8.4% | 5.2% | 6.0% |
| Saskatoon | 7.7% | 4.6% | 4.4% |
| Wood Buffalo | | | |

Facts & Figures

Highest Unemployment Rate during 2008-2010 downturn: 7.5% in January 2010

Highest Unemployment Rate during 1992-1996 downturn: 10.8% in July 1993
Number of additional jobs we would need to lose to reach this level: 33,060
(or amount labour force would need to grow by with no additional new jobs)

Highest Unemployment Rate during 1982-1985 downturn: 13.2% in March 1983
Number of additional jobs we would need to lose to reach this level: 55,228
(or amount labour force would need to grow by with no additional new jobs)

The last time Calgary had negative employment growth:

Between November 2009 and May 2010 Calgary lost 12,900 jobs.

Between November 2008 and July 2009 Calgary lost 27,000 jobs.

From peak employment in November 2008 to the lowest level reached in May 2010 - 33,400 jobs were lost in Calgary.

Calgary lost a small number of jobs July-August 2012 (2,400), again in March 2013 (3,200), and again (3,300) in February to April 2014.

Calgary

| | |
|---|----------|
| Number of jobs gained/lost in 2014: | 11,300 |
| Number of jobs gained/lost in 2015: | (16,200) |
| Number of jobs gained/lost December 2014 to June 2016: | (23,100) |
| Number of jobs gained/lost in 2016: | 12,700 |
| Number of jobs gained/lost in 2017: | 14,400 |
| Number of jobs gained/lost in 2018: | 8,800 |
| Number of jobs gained/lost in 2019: | 14,400 |
| Number of jobs gained/lost in 2020: | (5,600) |
| Number of jobs gained/lost in 2021: | 7,100 |
| Number of jobs gained/lost in 2022 (to-date): | 28,900 |

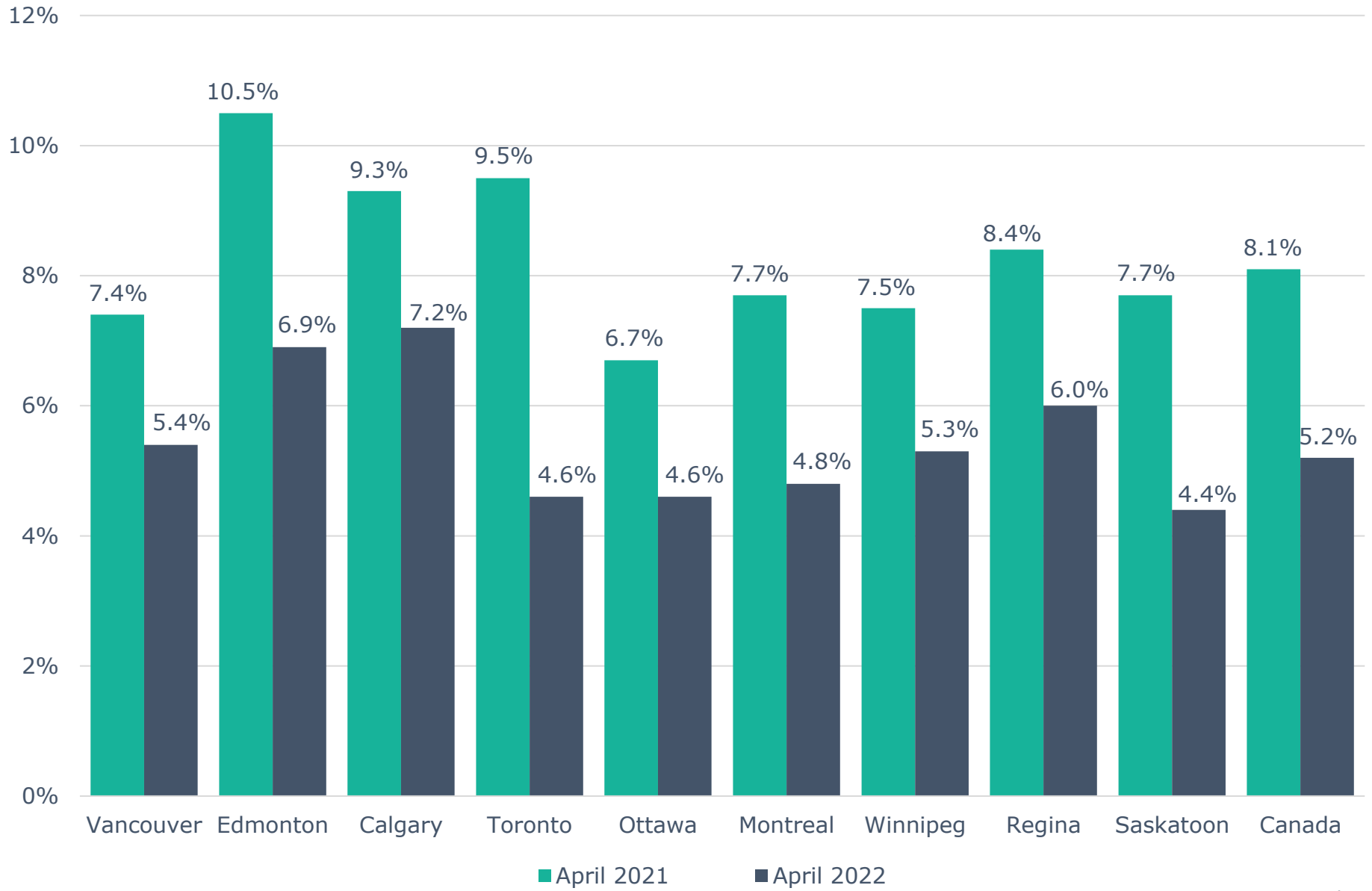
Alberta

| | |
|---|-----------|
| Number of jobs gained/lost in 2014: | 46,000 |
| Number of jobs gained/lost in 2015: | (40,100) |
| Number of jobs gained/lost December 2014 to June 2016: | (73,800) |
| Number of jobs gained/lost in 2016: | (21,500) |
| Number of jobs gained/lost in 2017: | 57,300 |
| Number of jobs gained/lost in 2018: | 21,000 |
| Number of jobs gained/lost in 2019: | (3,700) |
| Number of jobs gained/lost in 2020: | (109,900) |
| Number of jobs gained/lost in 2021: | 139,200 |
| Number of jobs gained/lost in 2022 (to-date): | 38,400 |

Source: Calgary - Table 14-10-0294-02 (282-0135); Alberta - 14-10-0287-01 (282-0087); Statistics Canada

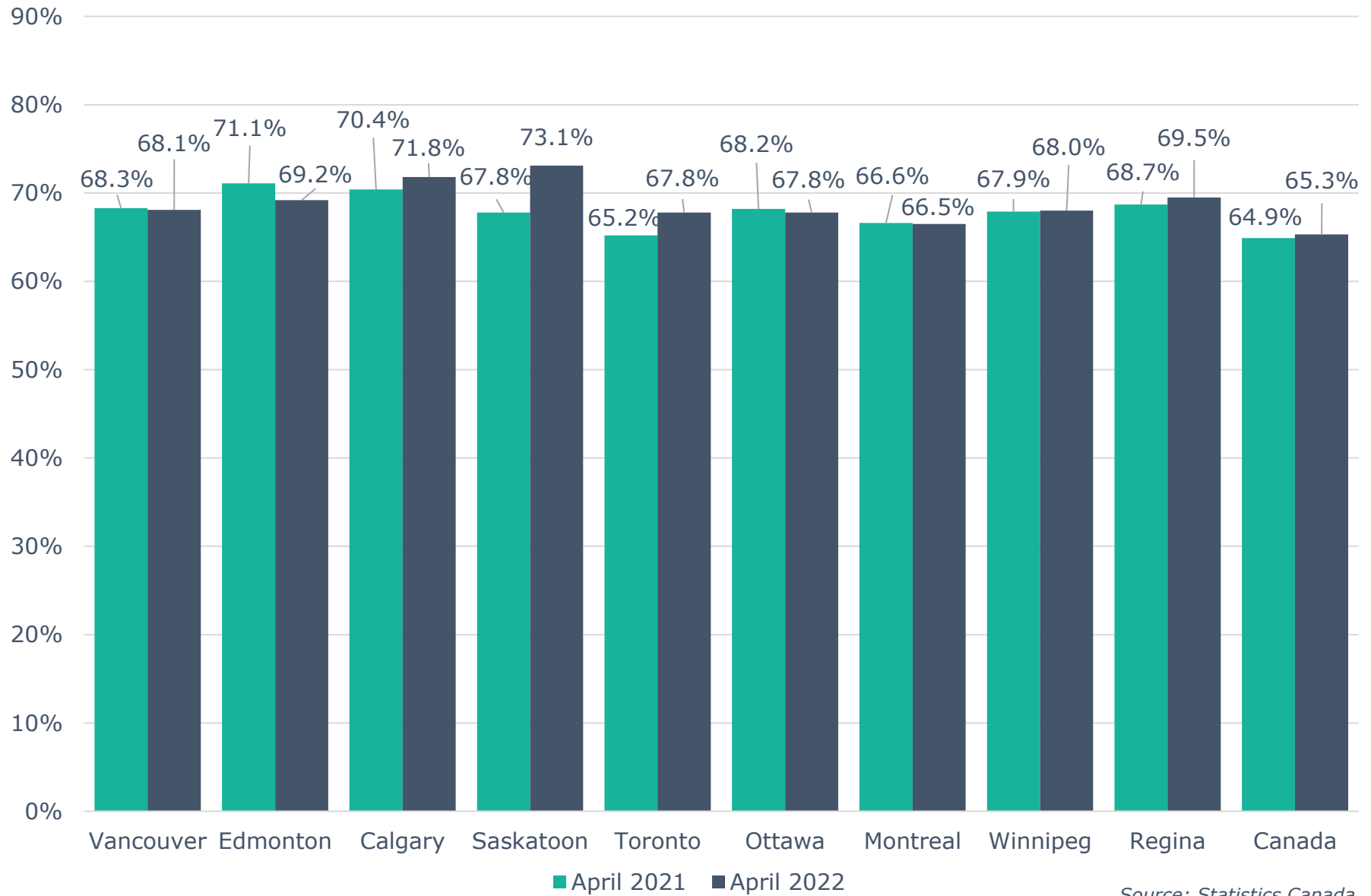
Note: Labour Force Survey, Employment, Seasonally Adjusted

Unemployment Rate Across Canada



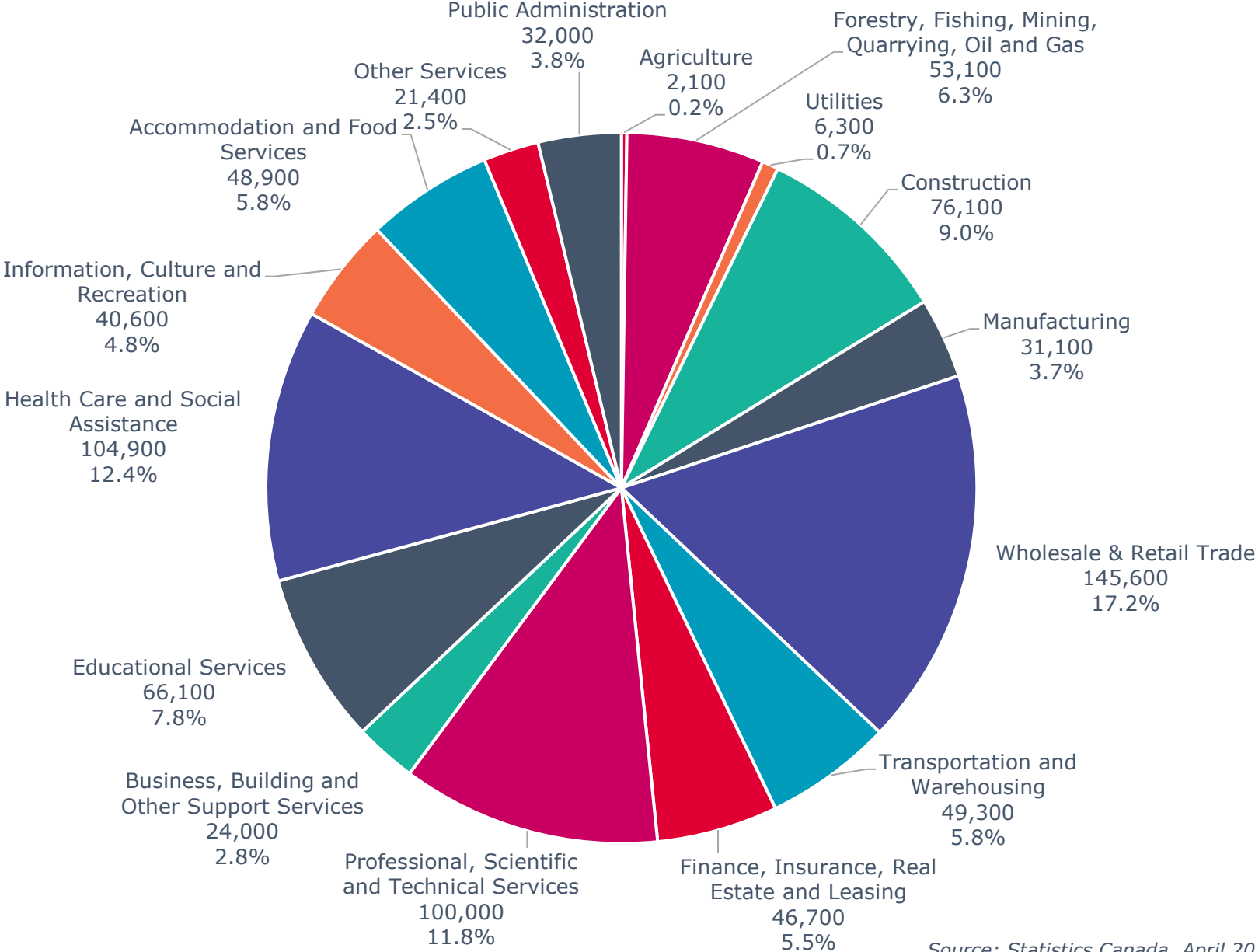
Source: Statistics Canada

Labour Force Participation Rate Across Canada



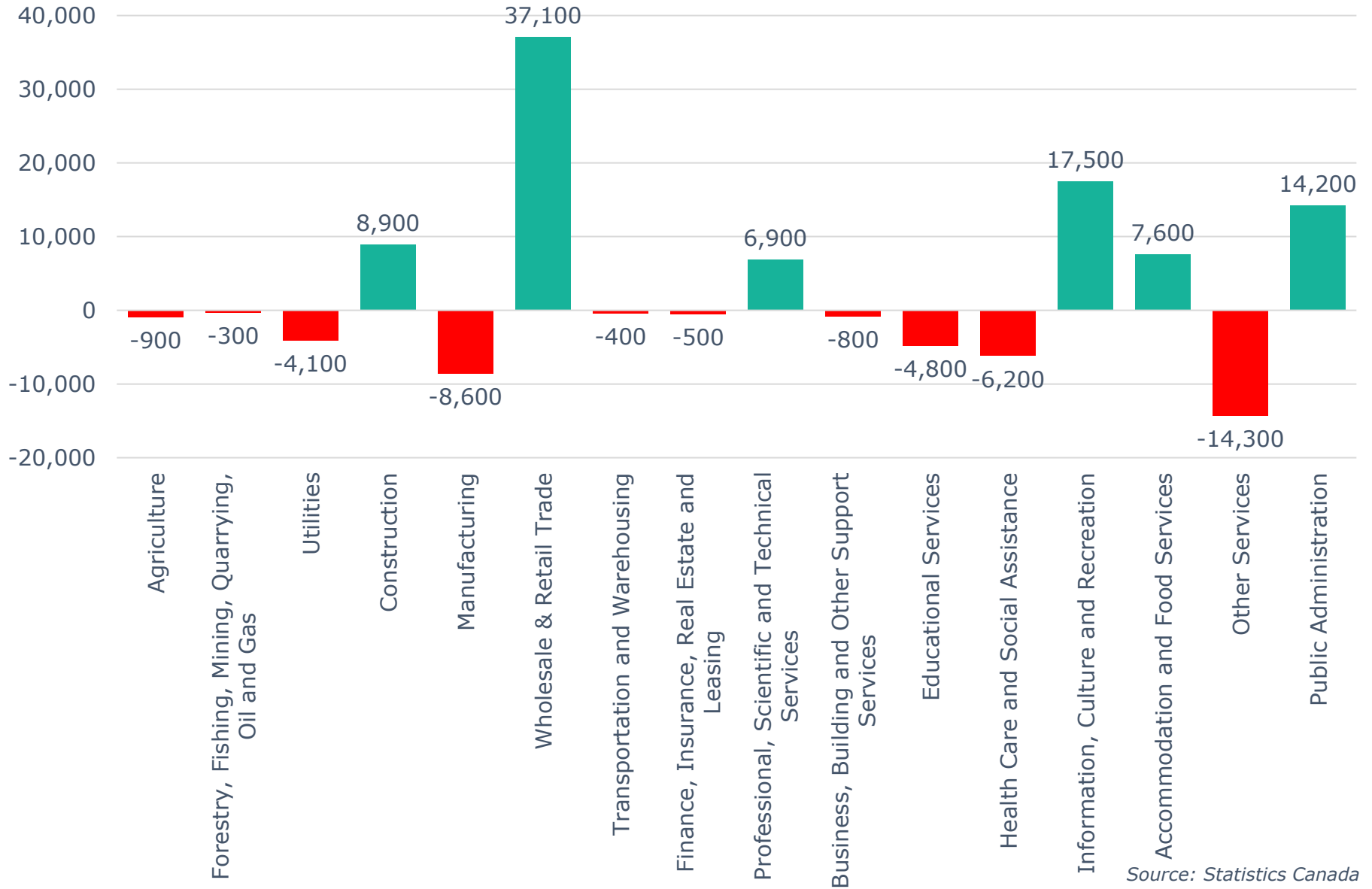
Source: Statistics Canada

Calgary CMA Employment by Industry (848,300)



Source: Statistics Canada, April 2022

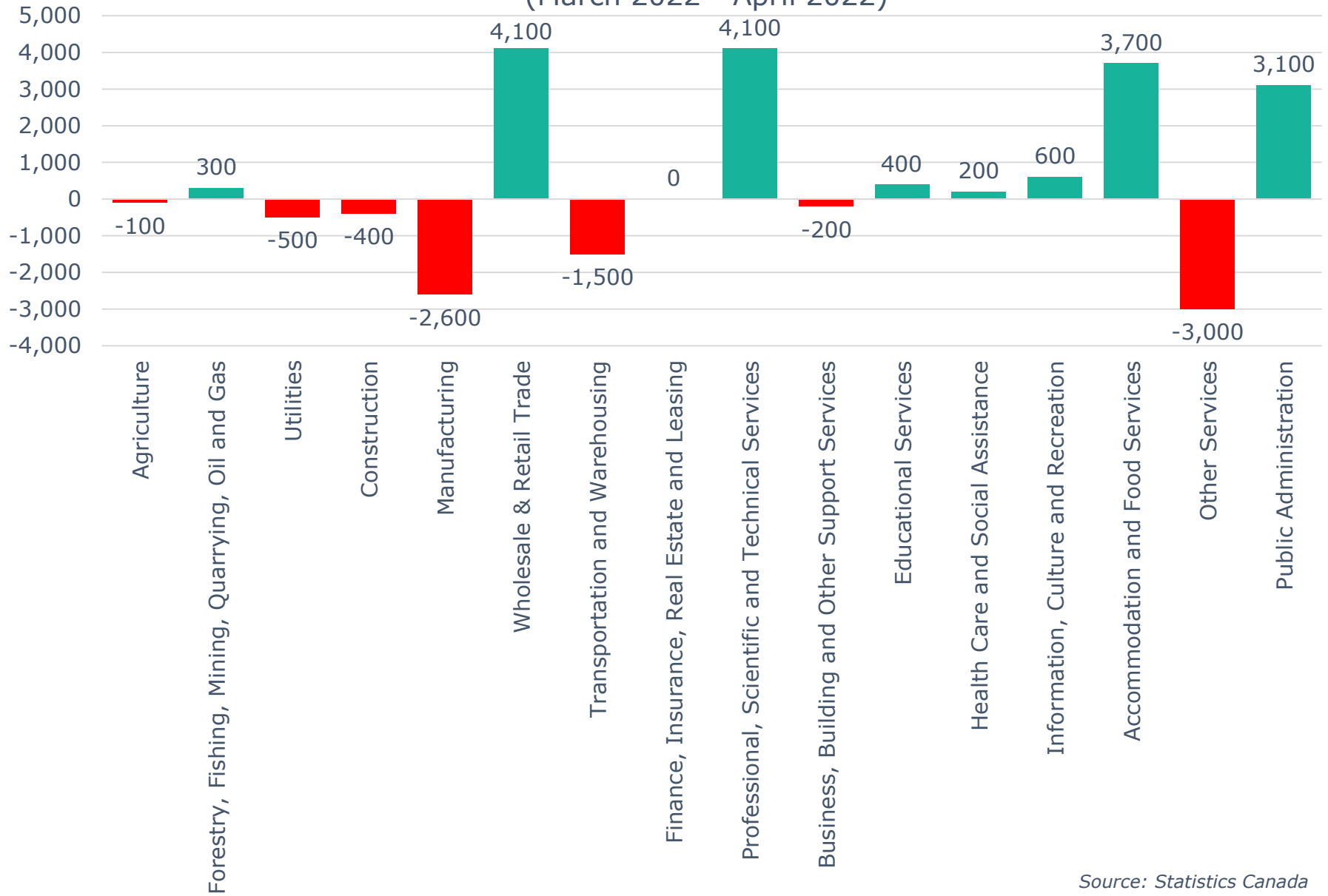
Calgary CMA 12-Month Net Jobs Gained or Lost by Industry (April 2022)



Source: Statistics Canada

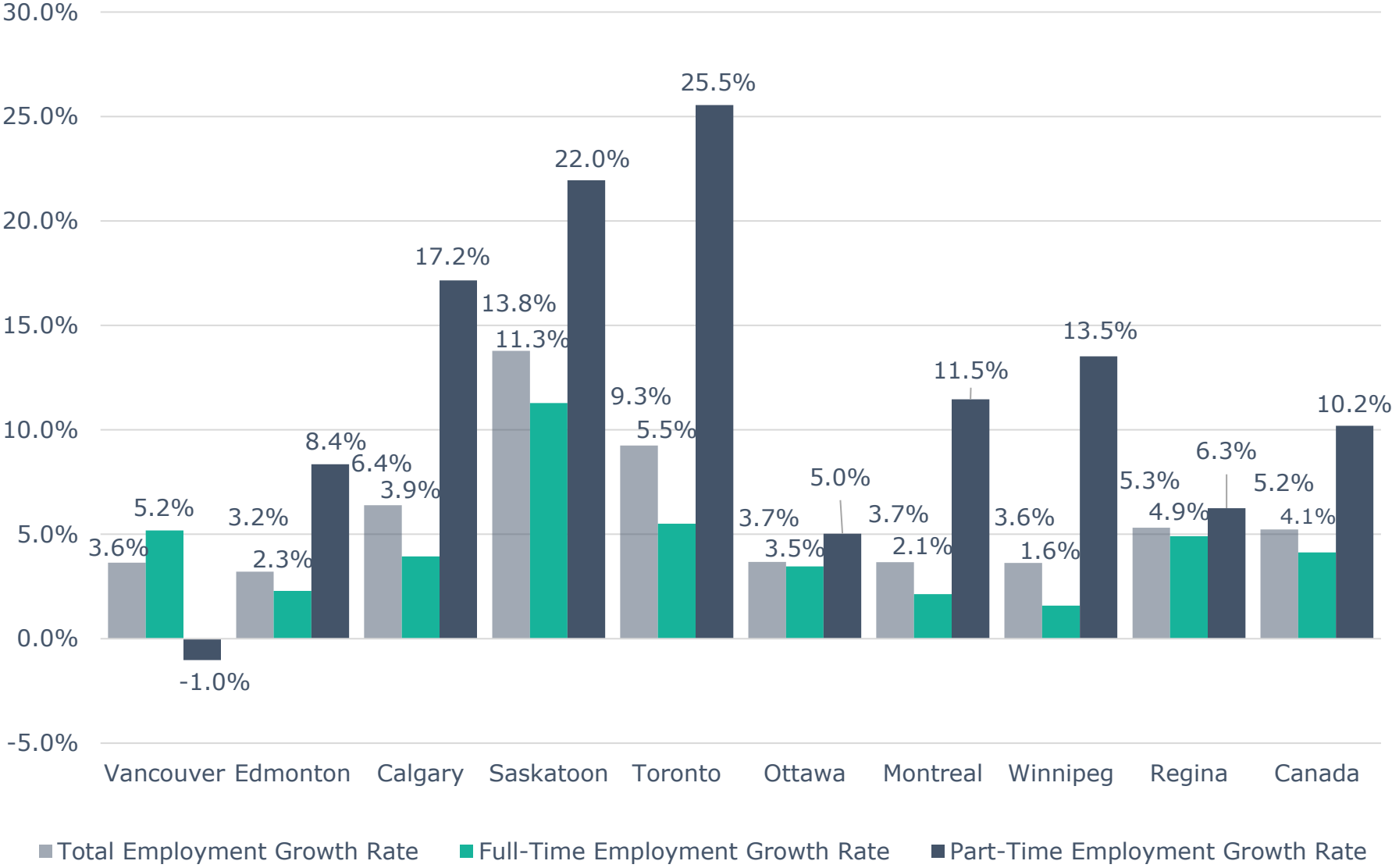
Calgary CMA Monthly Net Jobs Gained or Lost by Industry

(March 2022 - April 2022)



Source: Statistics Canada

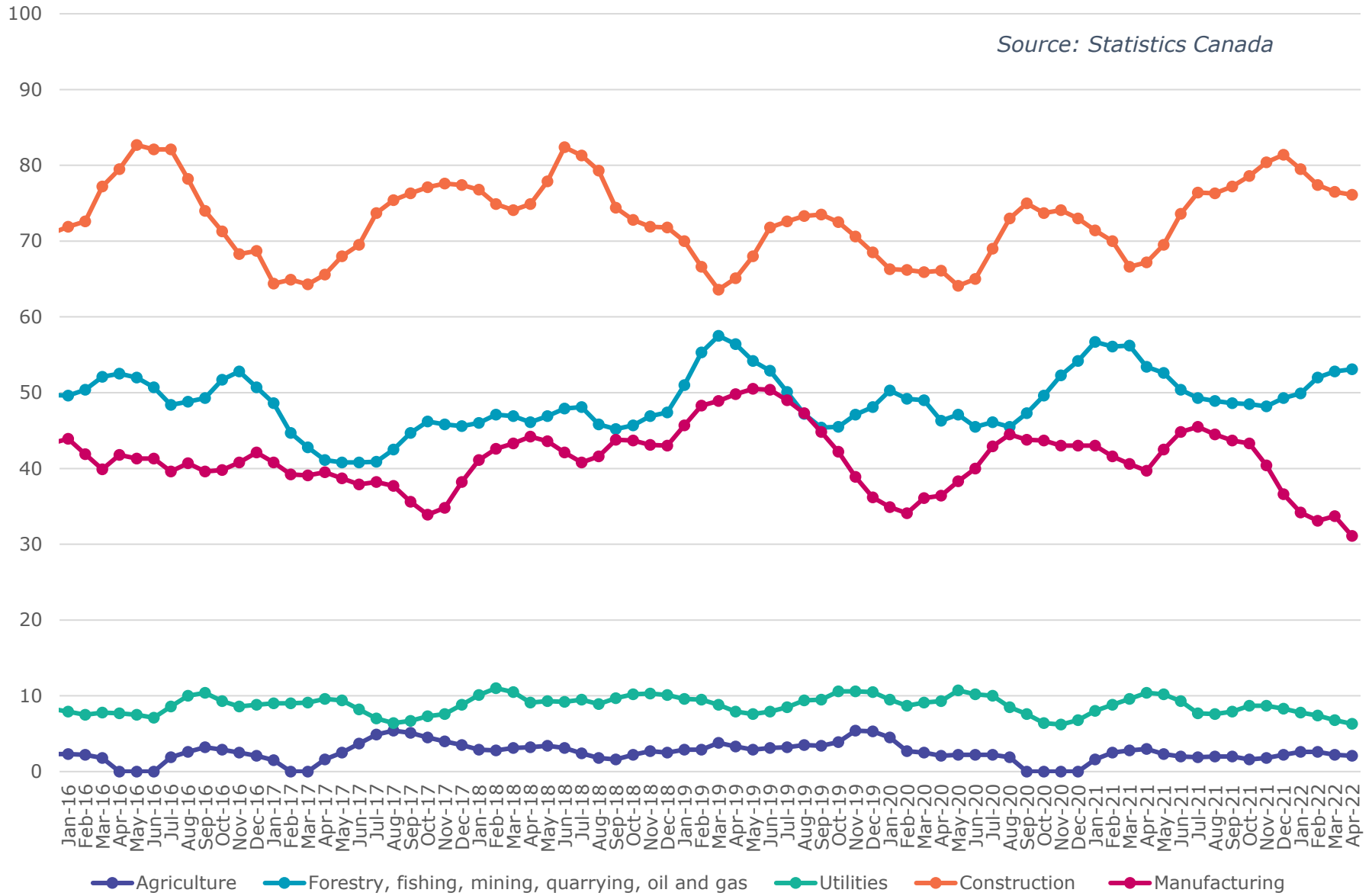
Annual Employment Growth



Source: Statistics Canada, April 2021 - April 2022

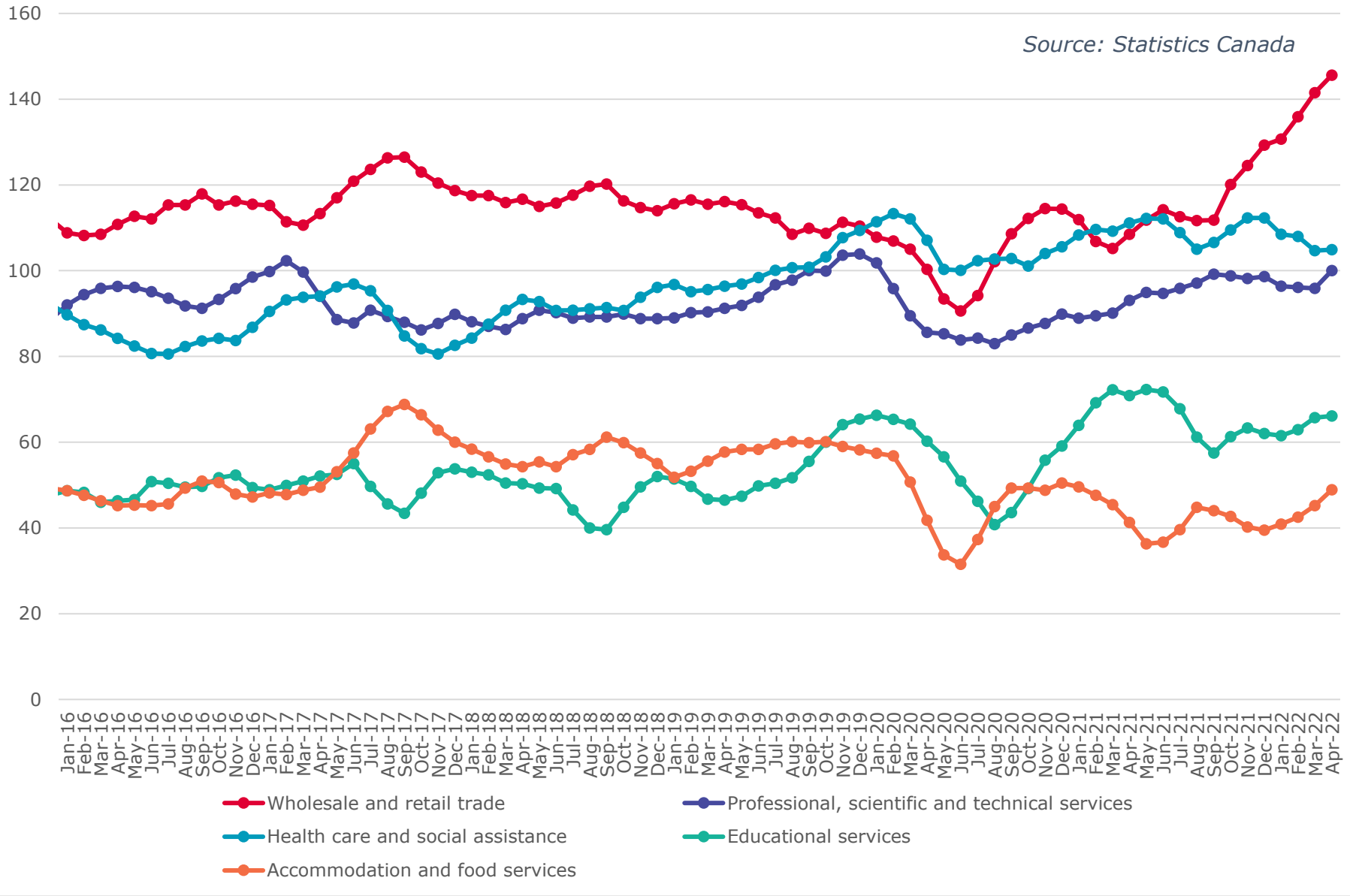
Calgary CMA Goods Producing Sectors - Number of Employees (In thousands)

Source: Statistics Canada



Calgary CMA Largest 5 Services Sector by Number of Employees (In thousands)

Source: Statistics Canada



Calgary CMA Smallest 6 Service Sectors by Number of Employees (In thousands)

Source: Statistics Canada

