



Labour Force Survey Statistics August 2021

CALGARY CMA

Table 14-10-0380-02 (282-0135) Labour force survey estimates (LFS), by census metropolitan area based on 2011 census boundaries, 3-month moving average, seasonally adjusted, monthly (persons unless otherwise noted)							
	August 2020	July 2021	August 2021	# Change July 2021 - August 2021	% Change July 2021 - August 2021	# Change August 2020 - August 2021	% Change August 2020 - August 2021
Population (x 1,000)	1,249.9	1,264.9	1,266.4	1.5	0.1%	16.5	1.3%
Labour force (x 1,000)	898.0	889.2	890.8	1.6	0.2%	-7.2	-0.8%
Employment (x 1,000)	768.9	802.5	805.1	2.6	0.3%	36.2	4.7%
Unemployment (x 1,000)	129.1	86.7	85.7	-1.0	-1.2%	-43.4	-33.6%
Unemployment rate (rate)	14.4%	9.8%	9.6%	-0.2%		-4.8%	
Participation rate (rate)	71.8%	70.3%	70.3%	0.0%		-1.5%	
Employment rate (rate)	61.5%	63.4%	63.6%	0.2%		2.1%	

CALGARY CMA

Table 14-10-0378-01 (282-0128) Labour force survey estimates (LFS), by census metropolitan area based on 2011 census boundaries, 3-month moving average, unadjusted for seasonality, monthly (persons unless otherwise noted)							
	August 2020	July 2021	August 2021	# Change July 2021 - August 2021	% Change July 2021 - August 2021	# Change August 2020 - August 2021	% Change August 2020 - August 2021
Population (x 1,000)	1,249.9	1,264.9	1,266.4	1.5	0.1%	16.5	1.3%
Labour force (x 1,000)	908.9	895.8	903.2	7.4	0.8%	-5.7	-0.6%
Employment (x 1,000)	775.1	809.7	812.1	2.4	0.3%	37.0	4.8%
Full-time employment (x 1,000)	653.5	661.4	663.2	1.8	0.3%	9.7	1.5%
Part-time employment (x 1,000)	121.6	148.3	149.0	0.7	0.5%	27.4	22.5%
Unemployment (x 1,000)	133.8	86.1	91.1	5.0	5.8%	-42.7	-31.9%
Not in labour force (x 1,000)	341.0	369.0	363.2	-5.8	-1.6%	22.2	6.5%
Unemployment rate (rate)	14.7%	9.6%	10.1%	0.5%		-4.6%	
Participation rate (rate)	72.7%	70.8%	71.3%	0.5%		-1.4%	
Employment rate (rate)	62.0%	64.0%	64.1%	0.1%		2.1%	

CALGARY CMA

Table: 14-10-0397-01 (282-0130) Labour force survey estimates (LFS), employment by census metropolitan area based on 2011 census boundaries and North American Industry Classification System (NAICS), 3-month moving average, unadjusted for seasonality, monthly (persons x 1,000)

	August 2020	July 2021	August 2021	# Change July 2021 - August 2021	% Change July 2021 - August 2021	# Change August 2020 - August 2021	% Change August 2020 - August 2021
Total Employed - All Industries	775.1	809.7	812.1	2.4	0.3%	37.0	4.8%
Goods-Producing Sector	173.4	180.7	179.3	-1.4	-0.8%	5.9	3.4%
Agriculture	1.9	1.9	2.0	0.1	5.3%	0.1	5.3%
Forestry, Fishing, Mining, Quarrying, Oil and Gas	45.5	49.3	48.9	-0.4	-0.8%	3.4	7.5%
Utilities	8.5	7.7	7.6	-0.1	-1.3%	-0.9	-10.6%
Construction	73.0	76.4	76.3	-0.1	-0.1%	3.3	4.5%
Manufacturing	44.5	45.5	44.5	-1.0	-2.2%	0.0	0.0%
Services-Producing Sector	601.7	629.0	632.9	3.9	0.6%	31.2	5.2%
Wholesale & Retail Trade	102.1	112.6	111.7	-0.9	-0.8%	9.6	9.4%
Transportation and Warehousing	48.2	47.3	50.8	3.5	7.4%	2.6	5.4%
Finance, Insurance, Real Estate and Leasing	45.7	49.7	52.0	2.3	4.6%	6.3	13.8%
Professional, Scientific and Technical Services	83.0	95.9	97.1	1.2	1.3%	14.1	17.0%
Business, Building and Other Support Services	34.2	25.1	26.8	1.7	6.8%	-7.4	-21.6%
Educational Services	40.8	67.8	61.2	-6.6	-9.7%	20.4	50.0%
Health Care and Social Assistance	102.7	108.9	105.0	-3.9	-3.6%	2.3	2.2%
Information, Culture and Recreation	33.7	26.2	29.6	3.4	13.0%	-4.1	-12.2%
Accommodation and Food Services	45.0	39.6	44.8	5.2	13.1%	-0.2	-0.4%
Other Services	36.3	34.0	31.9	-2.1	-6.2%	-4.4	-12.1%
Public Administration	30.1	21.8	22.0	0.2	0.9%	-8.1	-26.9%

Province of Alberta

Table: 14-10-0287-01 (282-0087) Labour force survey estimates (LFS), by sex and age group, seasonally adjusted, monthly (persons unless otherwise noted)

	August 2020	July 2021	August 2021	# Change July 2021 - August 2021	% Change July 2021 - August 2021	# Change August 2020 - August 2021	% Change August 2020 - August 2021
Population (x 1,000)	3,511.8	3,540.8	3,545.5	4.7	0.1%	33.7	1.0%
Labour force (x 1,000)	2,421.7	2,442.2	2,446.7	4.5	0.18%	25.0	1.0%
Employment (x 1,000)	2,125.2	2,233.8	2,253.3	19.5	0.9%	128.1	6.0%
Employment full-time (x 1,000)	1,724.7	1,801.2	1,817.5	16.3	0.9%	92.8	5.4%
Employment part-time (x 1,000)	400.5	432.6	435.7	3.1	0.7%	35.2	8.8%
Unemployment (x 1,000)	296.5	208.4	193.4	-15.0	-7.2%	-103.1	-34.8%
Unemployment rate (rate)	12.2%	8.5%	7.9%	-0.6%		-4.3%	
Participation rate (rate)	69.0%	69.0%	69.0%	0.0%		0.0%	
Employment rate (rate)	60.5%	63.1%	63.6%	0.5%		3.1%	

Province of Alberta

Table: 14-10-0355-01 (282-0088) Labour force survey estimates (LFS), employment by North American Industry Classification System (NAICS), seasonally adjusted, monthly (persons x 1,000)

	August 2020	July 2021	August 2021	# Change July 2021 - August 2021	% Change July 2021 - August 2021	# Change August 2020 - August 2021	% Change August 2020 - August 2021
Total Employed - All Industries	2,125.2	2,233.8	2,253.3	19.5	0.9%	128.1	6.0%
Goods-Producing Sector	521.5	546.5	539.8	-6.7	-1.2%	18.3	3.5%
Agriculture	37.7	36.0	34.0	-2.0	-5.6%	-3.7	-9.8%
Forestry, Fishing, Mining, Quarrying, Oil and Gas	121.8	147.7	144.3	-3.4	-2.3%	22.5	18.5%
Utilities	22.3	17.3	19.3	2.0	11.6%	-3.0	-13.5%
Construction	218.1	220.6	219.7	-0.9	-0.4%	1.6	0.7%
Manufacturing	121.6	124.9	122.5	-2.4	-1.9%	0.9	0.7%
Services-Producing Sector	1,603.7	1,687.2	1,713.5	26.3	1.6%	109.8	6.8%
Wholesale & Retail Trade	312.2	327.8	329.4	1.6	0.5%	17.2	5.5%
Transportation and Warehousing	119.0	126.3	137.9	11.6	9.2%	18.9	15.9%
Finance, Insurance, Real Estate and Leasing	103.8	122.0	120.1	-1.9	-1.6%	16.3	15.7%
Professional, Scientific and Technical Services	180.6	185.5	189.7	4.2	2.3%	9.1	5.0%
Business, Building and Other Support Services	71.9	72.3	68.5	-3.8	-5.3%	-3.4	-4.7%
Educational Services	140.4	172.7	172.7	0.0	0.0%	32.3	23.0%
Health Care and Social Assistance	287.4	292.3	295.0	2.7	0.9%	7.6	2.6%
Information, Culture and Recreation	74.8	65.4	71.8	6.4	9.8%	-3.0	-4.0%
Accommodation and Food Services	118.1	126.5	131.8	5.3	4.2%	13.7	11.6%
Other Services	97.9	96.8	95.8	-1.0	-1.0%	-2.1	-2.1%
Public Administration	97.7	99.8	100.9	1.1	1.1%	3.2	3.3%

CANADA

Table: 14-10-0287-01 (282-0087) Labour force survey estimates (LFS), by sex and age group, seasonally adjusted, monthly (persons unless otherwise noted)

	August 2020	July 2021	August 2021	# Change July 2021 - August 2021	% Change July 2021 - August 2021	# Change August 2020 - August 2021	% Change August 2020 - August 2021
Population (x 1,000)	31,084.7	31,315.3	31,356.7	41.4	0.1%	272.0	0.9%
Labour force (x 1,000)	20,071.1	20,405.3	20,414.1	8.8	0.04%	343.0	1.7%
Employment (x 1,000)	18,016.3	18,883.9	18,974.1	90.2	0.478%	957.8	5.3%
Employment full-time (x 1,000)	14,626.4	15,302.5	15,371.0	68.5	0.4%	744.6	5.1%
Employment part-time (x 1,000)	3,390.0	3,581.4	3,603.1	21.7	0.6%	213.1	6.3%
Unemployment (x 1,000)	2,054.8	1,521.4	1,440.0	-81.4	-5.4%	-614.8	-29.9%
Unemployment rate (rate)	10.2%	7.5%	7.1%	-0.4%		-3.1%	
Participation rate (rate)	64.6%	65.2%	65.1%	-0.1%		0.5%	
Employment rate (rate)	58.0%	60.3%	60.5%	0.2%		2.5%	

CANADA

Table: 14-10-0355-01 (282-0088) Labour force survey estimates (LFS), employment by North American Industry Classification System (NAICS), seasonally adjusted, monthly (persons x 1,000)

	August 2020	July 2021	August 2021	# Change July 2021 - August 2021	% Change July 2021 - August 2021	# Change August 2020 - August 2021	% Change August 2020 - August 2021
Total Employed - All Industries	18,016.3	18,883.9	18,974.1	90.2	0.5%	957.8	5.3%
Goods-Producing Sector	3,754.7	3,851.1	3,848.5	-2.6	-0.1%	93.8	2.5%
Agriculture	270.2	253.7	243.1	-10.6	-4.2%	-27.1	-10.0%
Forestry, Fishing, Mining, Quarrying, Oil and Gas	300.8	329.1	323.8	-5.3	-1.6%	23.0	7.6%
Utilities	137.4	139.6	138.5	-1.1	-0.8%	1.1	0.8%
Construction	1,371.1	1,412.3	1,432.5	20.2	1.4%	61.4	4.5%
Manufacturing	1,675.1	1,716.4	1,710.6	-5.8	-0.3%	35.5	2.1%
Services-Producing Sector	14,261.6	15,032.7	15,125.6	92.9	0.6%	864.0	6.1%
Wholesale and retail trade	2,740.4	2,824.9	2,841.8	16.9	0.6%	101.4	3.7%
Transportation and Warehousing	932.0	983.3	989.3	6.0	0.6%	57.3	6.1%
Finance, Insurance, Real Estate and Leasing	1,216.9	1,305.4	1,288.2	-17.2	-1.3%	71.3	5.9%
Professional, Scientific and Technical Services	1,513.9	1,676.8	1,691.5	14.7	0.9%	177.6	11.7%
Business, Building and Other Support Services	697.1	722.7	705.8	-16.9	-2.3%	8.7	1.2%
Educational Services	1,323.3	1,444.7	1,455.9	11.2	0.8%	132.6	10.0%
Health Care and Social Assistance	2,450.3	2,574.4	2,569.8	-4.6	-0.2%	119.5	4.9%
Information, Culture and Recreation	675.4	705.6	729.5	23.9	3.4%	54.1	8.0%
Accommodation and Food Services	977.9	993.1	1,067.7	74.6	7.5%	89.8	9.2%
Other Services	757.3	747.0	717.2	-29.8	-4.0%	-40.1	-5.3%
Public Administration	977.1	1,054.9	1,068.8	13.9	1.3%	91.7	9.4%

Unemployment Rates for Key Markets

	August 2020	July 2021	August 2021
Calgary	14.4%	9.8%	9.6%
Alberta	12.2%	8.5%	7.9%
Canada	10.2%	7.5%	7.1%
Montreal	11.9%	7.5%	7.0%
Ottawa	9.3%	7.1%	6.2%
Toronto	14.0%	7.1%	6.2%
Edmonton	13.7%	8.8%	8.2%
Vancouver	13.1%	7.6%	7.2%
Winnipeg	10.5%	7.4%	7.1%
Regina	9.6%	6.1%	6.2%
Saskatoon	10.8%	7.9%	8.1%
Wood Buffalo			

Facts & Figures

Highest Unemployment Rate during 2008-2010 downturn: 7.5% in January 2010

Highest Unemployment Rate during 1992-1996 downturn: 10.8% in July 1993
Number of additional jobs we would need to lose to reach this level: 10,506
(or amount labour force would need to grow by with no additional new jobs)

Highest Unemployment Rate during 1982-1985 downturn: 13.2% in March 1983
Number of additional jobs we would need to lose to reach this level: 31,886
(or amount labour force would need to grow by with no additional new jobs)

The last time Calgary had negative employment growth:

Between November 2009 and May 2010 Calgary lost 12,900 jobs.

Between November 2008 and July 2009 Calgary lost 27,000 jobs.

From peak employment in November 2008 to the lowest level reached in May 2010 - 33,400 jobs were lost in Calgary.

Calgary lost a small number of jobs July-August 2012 (2,400), again in March 2013 (3,200), and again (3,300) in February to April 2014.

Calgary

Number of jobs gained/lost in 2014:	11,300
Number of jobs gained/lost in 2015:	(16,200)
Number of jobs gained/lost December 2014 to June 2016:	(23,100)
Number of jobs gained/lost in 2016:	12,700
Number of jobs gained/lost in 2017:	14,400
Number of jobs gained/lost in 2018:	8,800
Number of jobs gained/lost in 2019:	14,400
Number of jobs gained/lost in 2020:	(5,600)
Number of jobs gained/lost in 2021 (to-date):	(16,000)

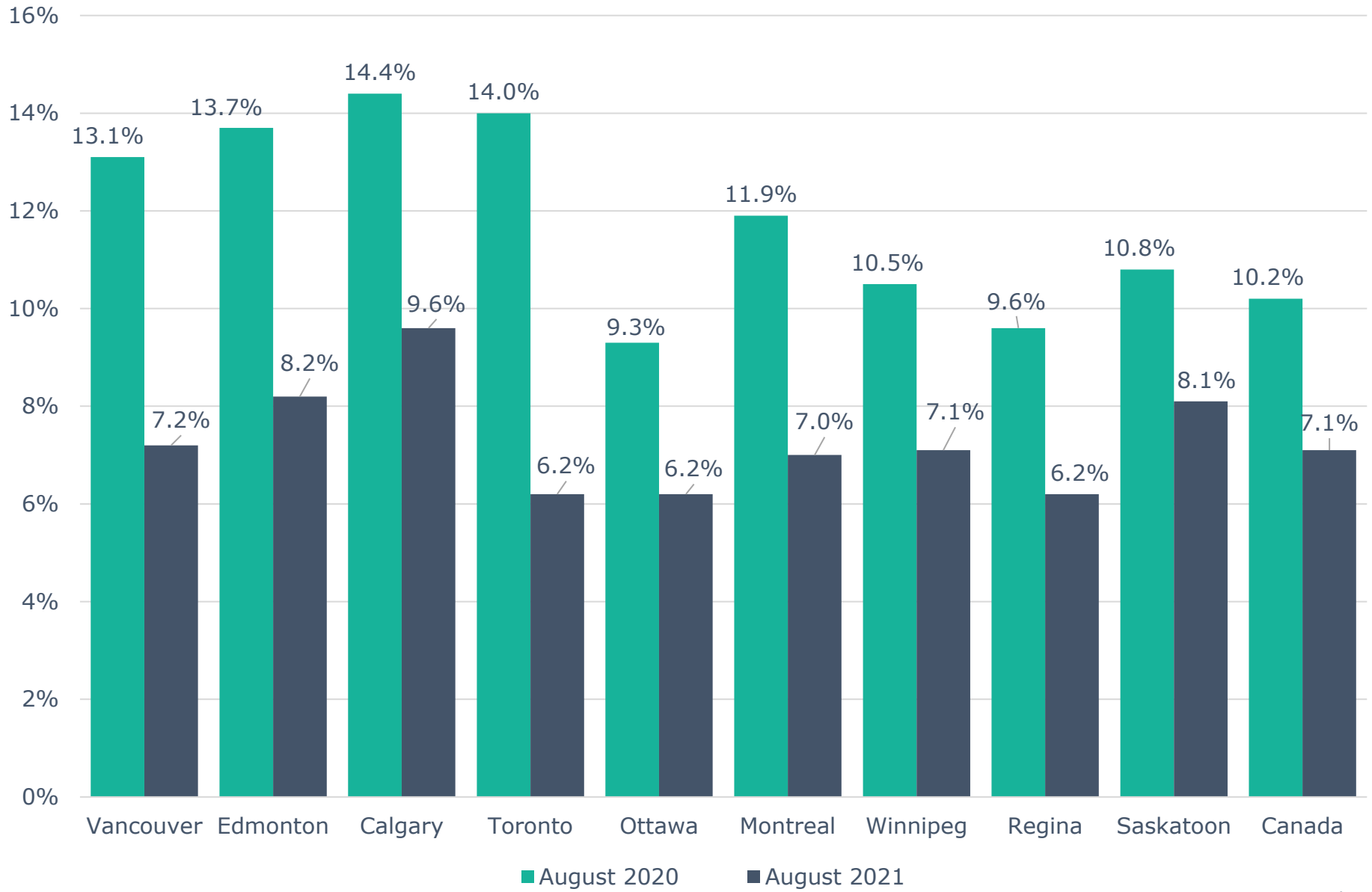
Alberta

Number of jobs gained/lost in 2014:	46,000
Number of jobs gained/lost in 2015:	(40,100)
Number of jobs gained/lost December 2014 to June 2016:	(73,800)
Number of jobs gained/lost in 2016:	(21,500)
Number of jobs gained/lost in 2017:	57,300
Number of jobs gained/lost in 2018:	21,000
Number of jobs gained/lost in 2019:	1,500
Number of jobs gained/lost in 2020:	(109,900)
Number of jobs gained/lost in 2021 (to-date):	92,700

Source: Calgary - Table 14-10-0294-02 (282-0135); Alberta - 14-10-0287-01 (282-0087); Statistics Canada

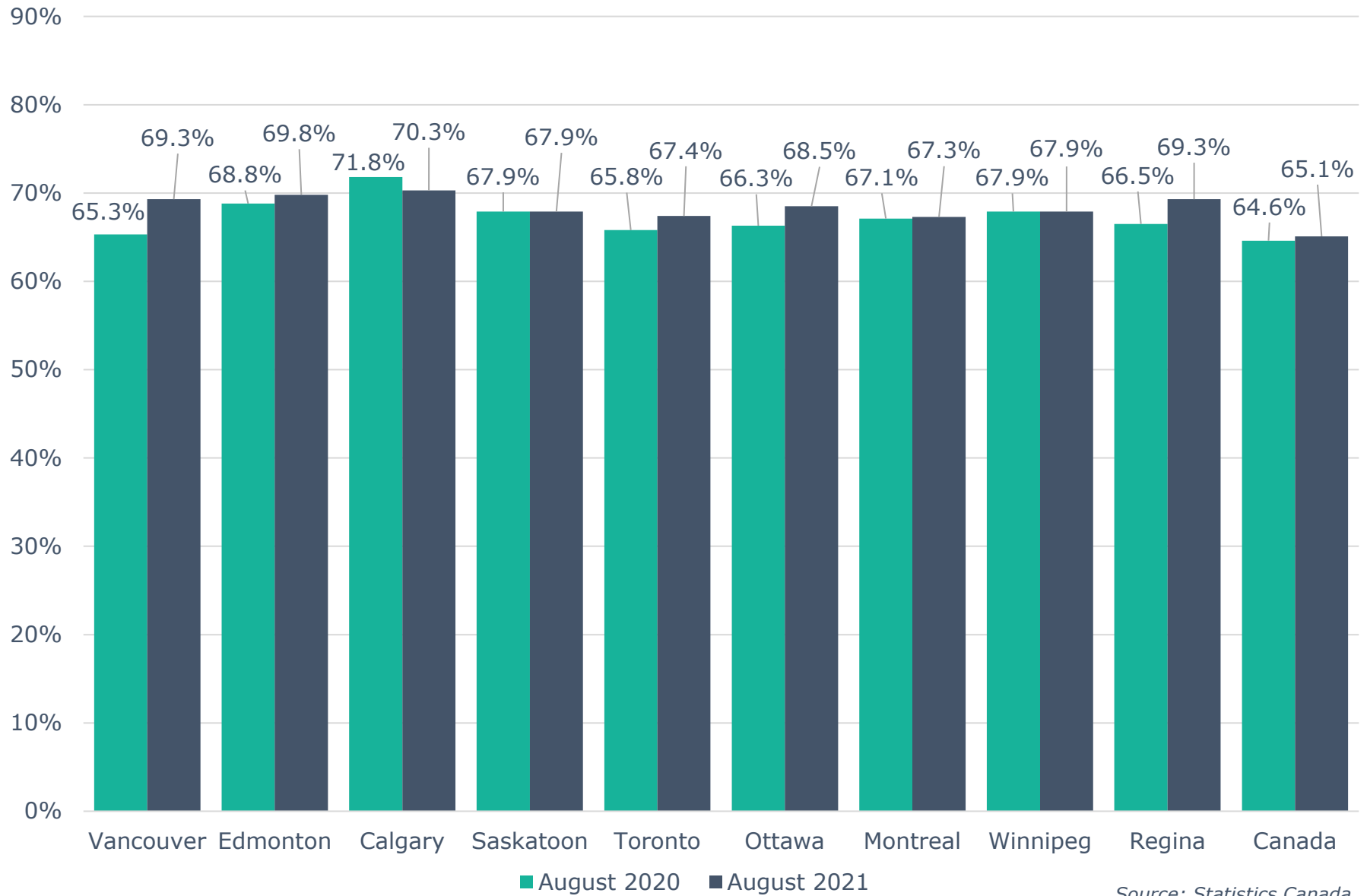
Note: Labour Force Survey, Employment, Seasonally Adjusted

Unemployment Rate Across Canada



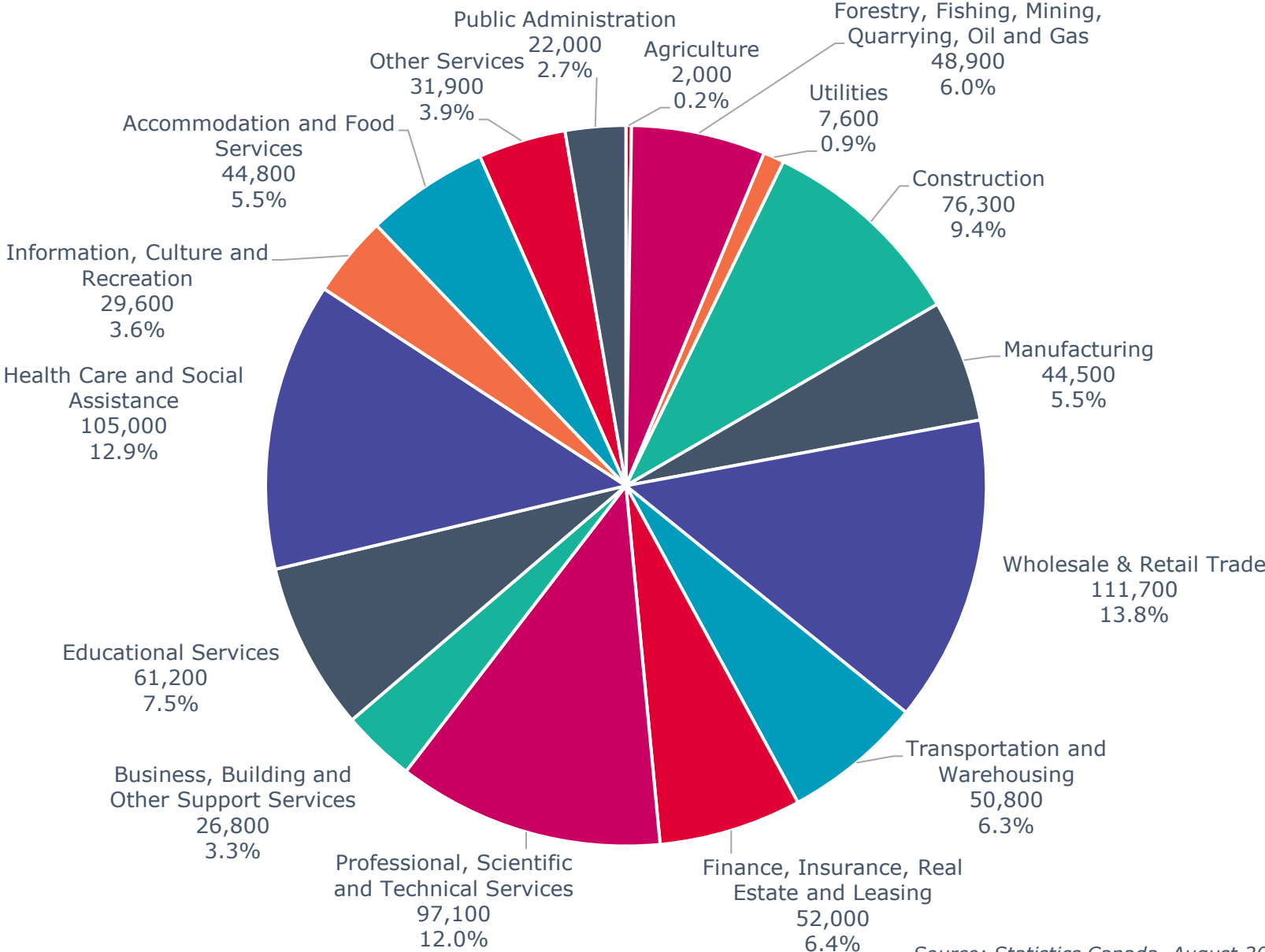
Source: Statistics Canada

Labour Force Participation Rate Across Canada



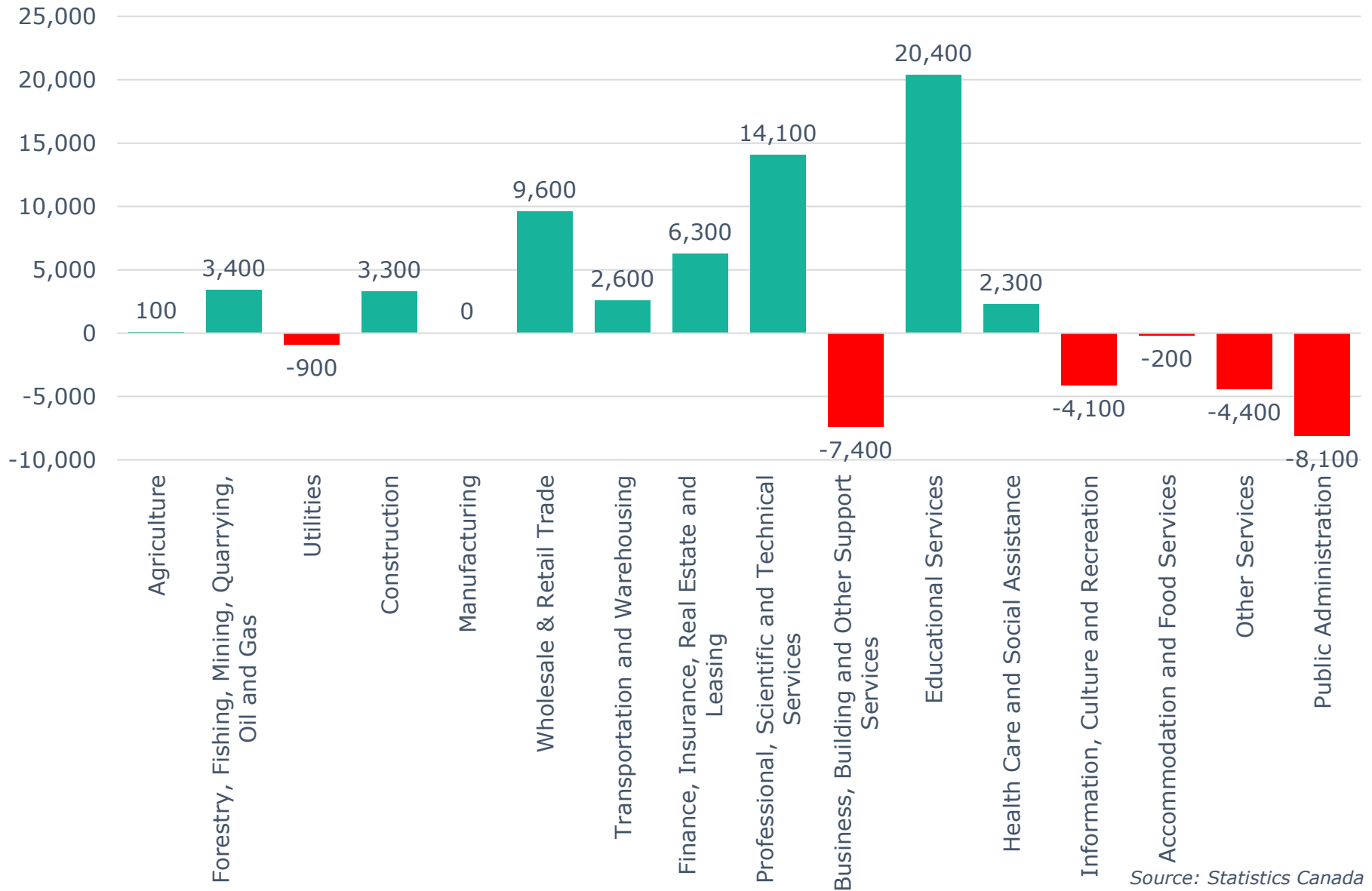
Source: Statistics Canada

Calgary CMA Employment by Industry (812,100)



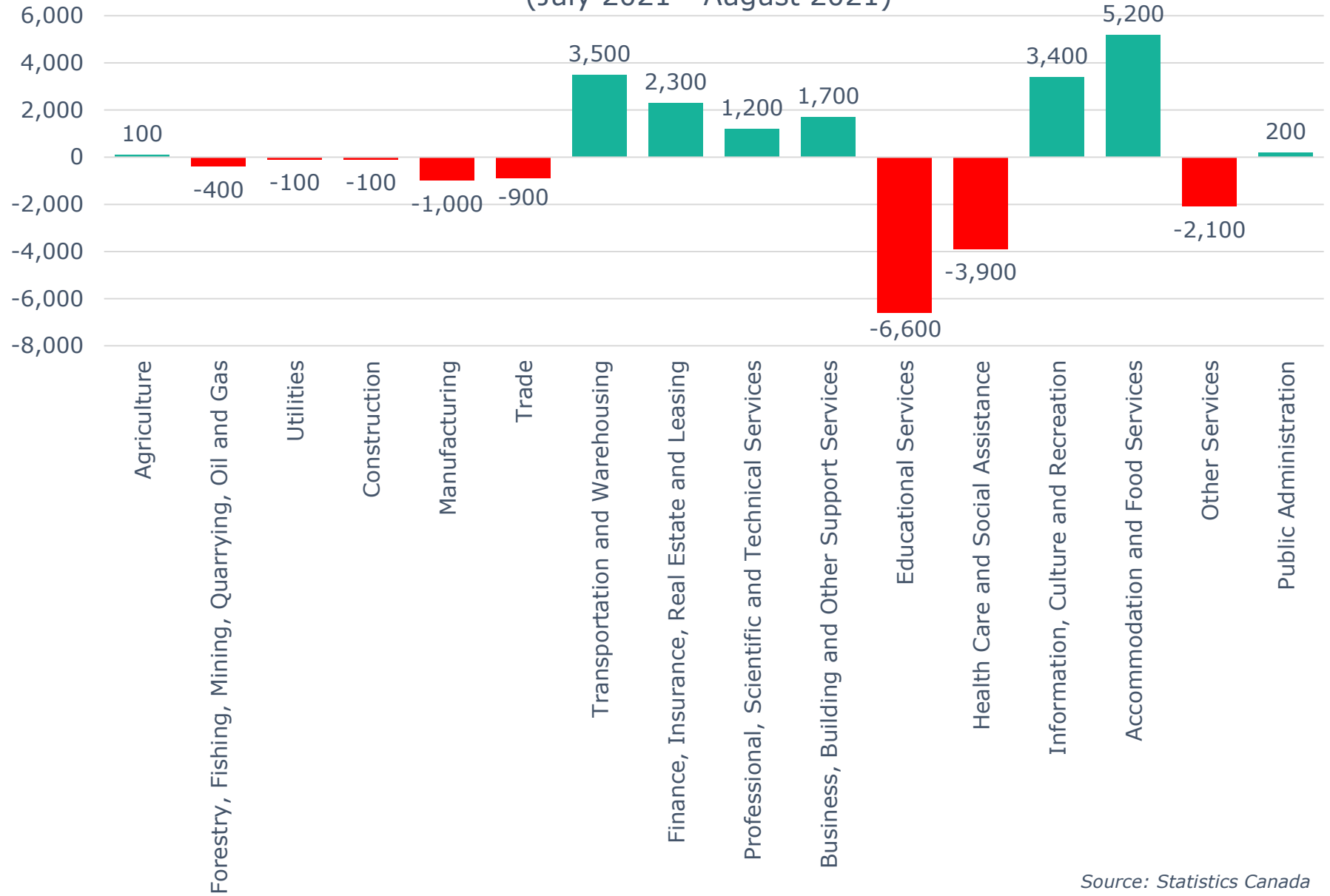
Source: Statistics Canada, August 2021

Calgary CMA 12-Month Net Jobs Gained or Lost by Industry (August 2021)



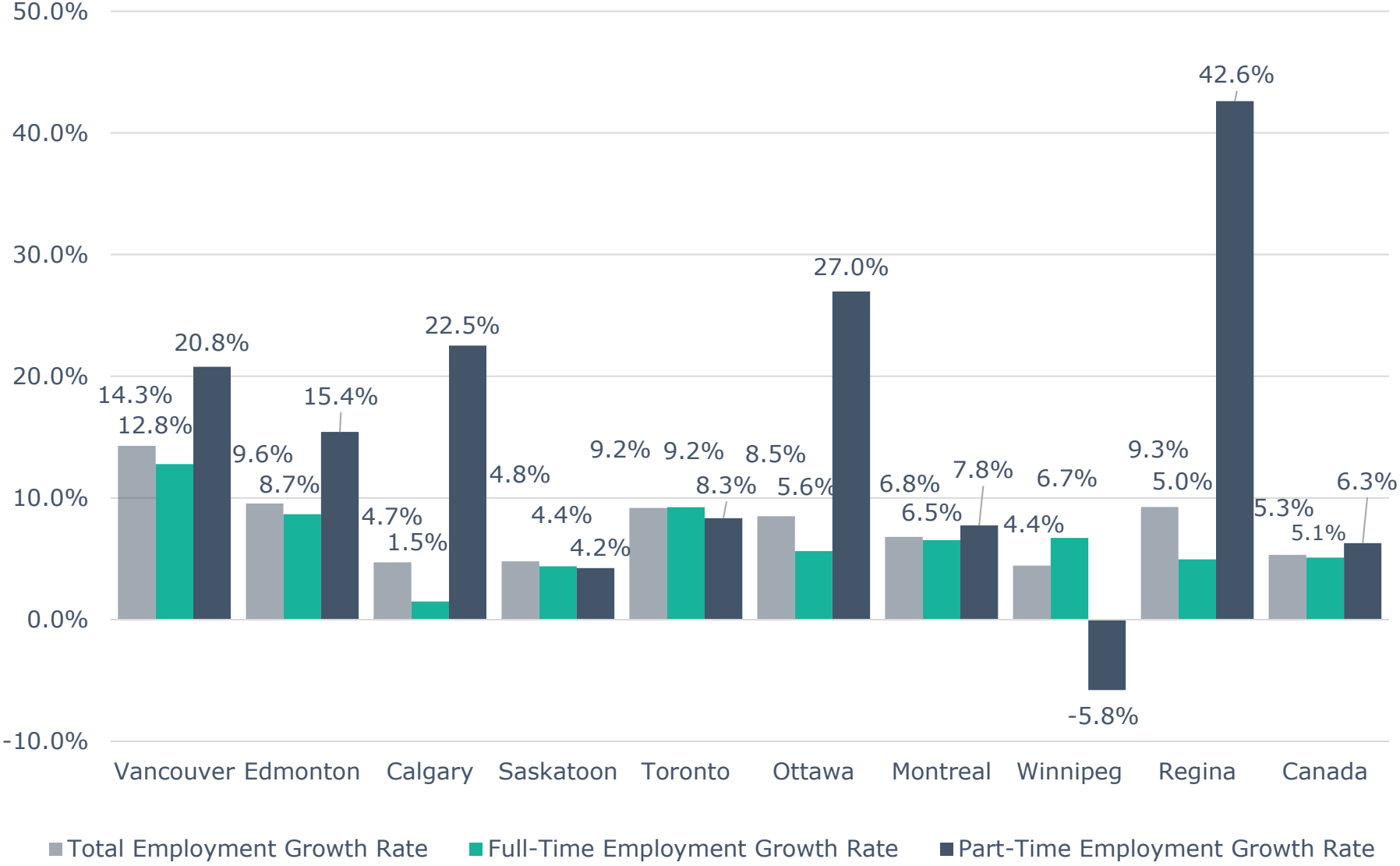
Source: Statistics Canada

Calgary CMA Monthly Net Jobs Gained or Lost by Industry (July 2021 - August 2021)



Source: Statistics Canada

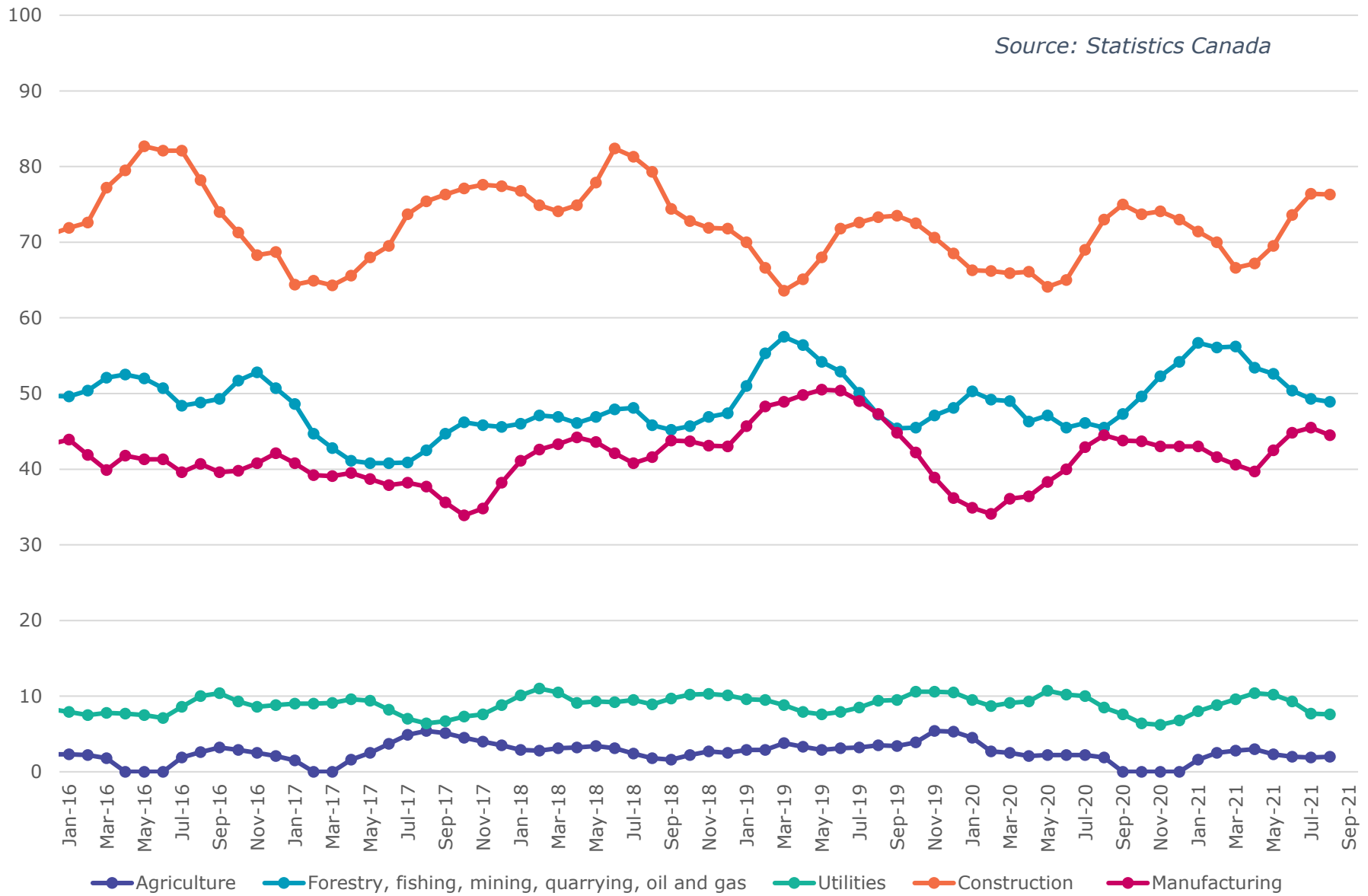
Annual Employment Growth



Source: Statistics Canada, August 2020 - August 2021

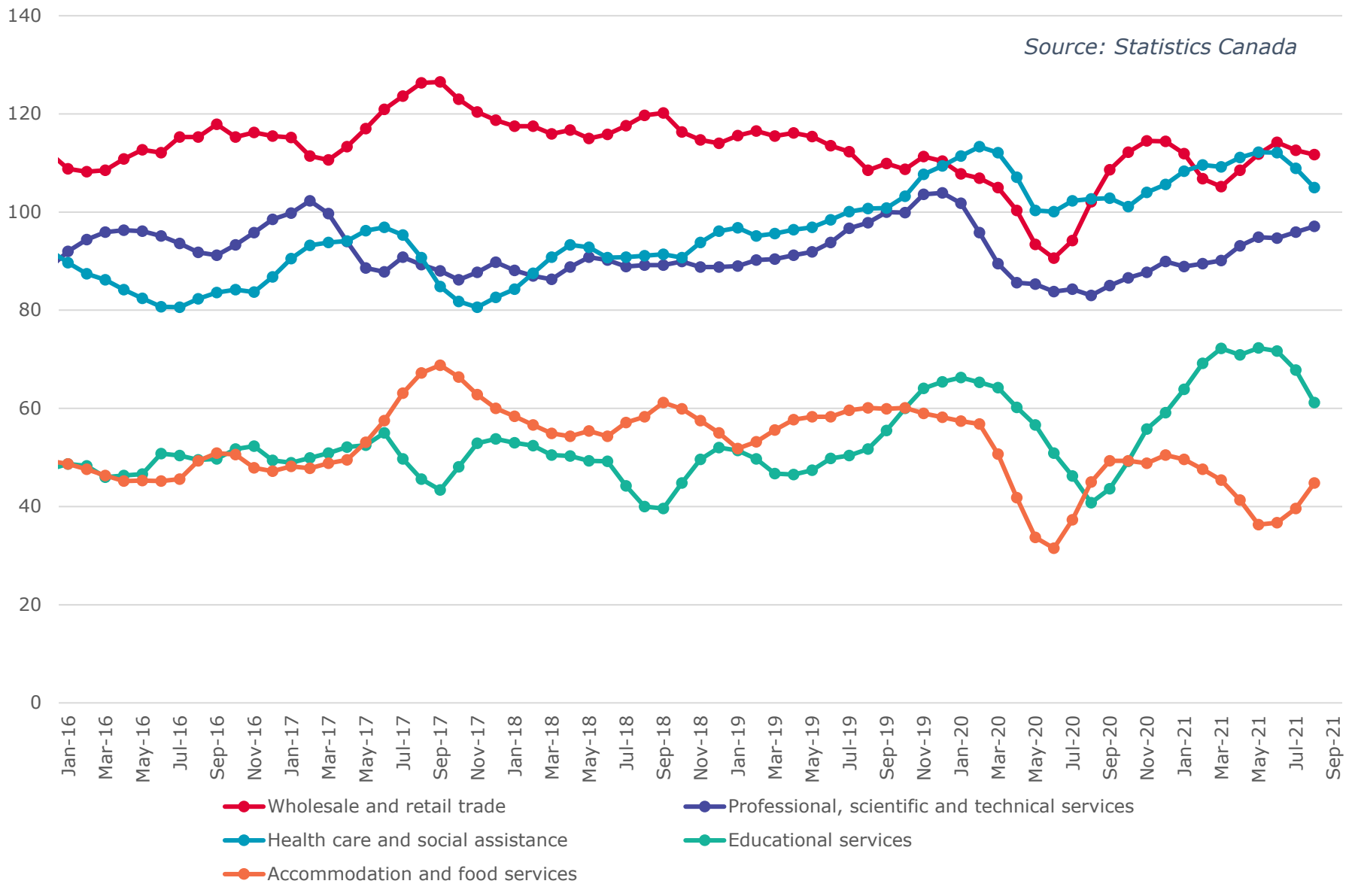
Calgary CMA Goods Producing Sectors - Number of Employees (In thousands)

Source: Statistics Canada



Calgary CMA Largest 5 Services Sector by Number of Employees (In thousands)

Source: Statistics Canada



Calgary CMA Smallest 6 Service Sectors by Number of Employees (In thousands)

