



## **Labour Force Survey Statistics November 2021**

## CALGARY CMA

<b>Table 14-10-0380-02 (282-0135) Labour force survey estimates (LFS), by census metropolitan area based on 2011 census boundaries, 3-month moving average, seasonally adjusted, monthly (persons unless otherwise noted)</b>							
	November 2020	October 2021	November 2021	# Change October 2021 - November 2021	% Change October 2021 - November 2021	# Change November 2020 - November 2021	% Change November 2020 - November 2021
Population (x 1,000)	1,254.5	1,270.5	1,272.9	2.4	0.2%	18.4	1.5%
Labour force (x 1,000)	922.5	905.0	906.9	1.9	0.2%	-15.6	-1.7%
Employment (x 1,000)	821.8	832.4	833.0	0.6	0.1%	11.2	1.4%
Unemployment (x 1,000)	100.6	72.7	73.9	1.2	1.7%	-26.7	-26.5%
Unemployment rate (rate)	10.9%	8.0%	8.1%	0.1%		-2.8%	
Participation rate (rate)	73.5%	71.2%	71.2%	0.0%		-2.3%	
Employment rate (rate)	65.5%	65.5%	65.4%	-0.1%		-0.1%	

## CALGARY CMA

<b>Table 14-10-0378-01 (282-0128) Labour force survey estimates (LFS), by census metropolitan area based on 2011 census boundaries, 3-month moving average, unadjusted for seasonality, monthly (persons unless otherwise noted)</b>							
	November 2020	October 2021	November 2021	# Change October 2021 - November 2021	% Change October 2021 - November 2021	# Change November 2020 - November 2021	% Change November 2020 - November 2021
Population (x 1,000)	1,254.5	1,270.5	1,272.9	2.4	0.2%	18.4	1.5%
Labour force (x 1,000)	921.3	910.8	906.4	-4.4	-0.5%	-14.9	-1.6%
Employment (x 1,000)	822.6	834.7	834.8	0.1	0.0%	12.2	1.5%
Full-time employment (x 1,000)	668.6	681.1	678.1	-3.0	-0.4%	9.5	1.4%
Part-time employment (x 1,000)	154.1	153.6	156.7	3.1	2.0%	2.6	1.7%
Unemployment (x 1,000)	98.7	76.1	71.6	-4.5	-5.9%	-27.1	-27.5%
Not in labour force (x 1,000)	333.2	359.7	366.5	6.8	1.9%	33.3	10.0%
Unemployment rate (rate)	10.7%	8.4%	7.9%	-0.5%		-2.8%	
Participation rate (rate)	73.4%	71.7%	71.2%	-0.5%		-2.2%	
Employment rate (rate)	65.6%	65.7%	65.6%	-0.1%		0.0%	

## CALGARY CMA

**Table: 14-10-0397-01 (282-0130) Labour force survey estimates (LFS), employment by census metropolitan area based on 2011 census boundaries and North American Industry Classification System (NAICS), 3-month moving average, unadjusted for seasonality, monthly (persons x 1,000)**

	November 2020	October 2021	November 2021	# Change October 2021 - November 2021	% Change October 2021 - November 2021	# Change November 2020 - November 2021	% Change November 2020 - November 2021
Total Employed - All Industries	822.6	834.7	834.8	0.1	0.0%	12.2	1.5%
Goods-Producing Sector	176.8	180.7	179.6	-1.1	-0.6%	2.8	1.6%
Agriculture	x	1.6	1.8	0.2	12.5%	Data unavailable	Data unavailable
Forestry, Fishing, Mining, Quarrying, Oil and Gas	52.3	48.5	48.2	-0.3	-0.6%	-4.1	-7.8%
Utilities	6.2	8.7	8.7	0.0	0.0%	2.5	40.3%
Construction	74.1	78.6	80.4	1.8	2.3%	6.3	8.5%
Manufacturing	43.0	43.3	40.4	-2.9	-6.7%	-2.6	-6.0%
Services-Producing Sector	645.8	654.0	655.2	1.2	0.2%	9.4	1.5%
Wholesale & Retail Trade	114.5	120.1	124.5	4.4	3.7%	10.0	8.7%
Transportation and Warehousing	56.2	56.8	57.4	0.6	1.1%	1.2	2.1%
Finance, Insurance, Real Estate and Leasing	47.7	55.7	54.7	-1.0	-1.8%	7.0	14.7%
Professional, Scientific and Technical Services	87.7	98.8	98.2	-0.6	-0.6%	10.5	12.0%
Business, Building and Other Support Services	28.0	28.5	27.6	-0.9	-3.2%	-0.4	-1.4%
Educational Services	55.8	61.3	63.3	2.0	3.3%	7.5	13.4%
Health Care and Social Assistance	104.0	109.5	112.3	2.8	2.6%	8.3	8.0%
Information, Culture and Recreation	37.6	32.3	29.8	-2.5	-7.7%	-7.8	-20.7%
Accommodation and Food Services	48.8	42.7	40.2	-2.5	-5.9%	-8.6	-17.6%
Other Services	37.3	26.5	24.1	-2.4	-9.1%	-13.2	-35.4%
Public Administration	28.1	21.8	23.1	1.3	6.0%	-5.0	-17.8%

## Province of Alberta

<b>Table: 14-10-0287-01 (282-0087) Labour force survey estimates (LFS), by sex and age group, seasonally adjusted, monthly (persons unless otherwise noted)</b>							
	November 2020	October 2021	November 2021	# Change October 2021 - November 2021	% Change October 2021 - November 2021	# Change November 2020 - November 2021	% Change November 2020 - November 2021
Population (x 1,000)	3,522.0	3,556.1	3,562.1	6.0	0.2%	40.1	1.1%
Labour force (x 1,000)	2,446.1	2,449.8	2,465.6	15.8	0.64%	19.5	0.8%
Employment (x 1,000)	2,173.9	2,263.9	2,279.3	15.4	0.7%	105.4	4.8%
Employment full-time (x 1,000)	1,730.8	1,852.7	1,848.9	-3.8	-0.2%	118.1	6.8%
Employment part-time (x 1,000)	443.1	411.1	430.5	19.4	4.7%	-12.6	-2.8%
Unemployment (x 1,000)	272.3	185.9	186.2	0.3	0.2%	-86.1	-31.6%
Unemployment rate (rate)	11.1%	7.6%	7.6%	0.0%		-3.5%	
Participation rate (rate)	69.5%	68.9%	69.2%	0.3%		-0.3%	
Employment rate (rate)	61.7%	63.7%	64.0%	0.3%		2.3%	

## Province of Alberta

**Table: 14-10-0355-01 (282-0088) Labour force survey estimates (LFS), employment by North American Industry Classification System (NAICS), seasonally adjusted, monthly (persons x 1,000)**

	November 2020	October 2021	November 2021	# Change October 2021 - November 2021	% Change October 2021 - November 2021	# Change November 2020 - November 2021	% Change November 2020 - November 2021
Total Employed - All Industries	2,173.9	2,263.9	2,279.3	15.4	0.7%	105.4	4.8%
Goods-Producing Sector	540.4	526.4	529.4	3.0	0.6%	-11.0	-2.0%
Agriculture	38.7	33.2	33.6	0.4	1.2%	-5.1	-13.2%
Forestry, Fishing, Mining, Quarrying, Oil and Gas	134.3	140.7	139.1	-1.6	-1.1%	4.8	3.6%
Utilities	22.8	18.8	19.0	0.2	1.1%	-3.8	-16.7%
Construction	222.9	213.5	219.6	6.1	2.9%	-3.3	-1.5%
Manufacturing	121.6	120.2	118.2	-2.0	-1.7%	-3.4	-2.8%
Services-Producing Sector	1,633.5	1,737.4	1,750.0	12.6	0.7%	116.5	7.1%
Wholesale & Retail Trade	321.5	354.6	361.7	7.1	2.0%	40.2	12.5%
Transportation and Warehousing	130.0	136.6	139.4	2.8	2.0%	9.4	7.2%
Finance, Insurance, Real Estate and Leasing	112.0	121.0	121.2	0.2	0.2%	9.2	8.2%
Professional, Scientific and Technical Services	173.6	193.4	193.0	-0.4	-0.2%	19.4	11.2%
Business, Building and Other Support Services	60.2	71.6	71.4	-0.2	-0.3%	11.2	18.6%
Educational Services	148.9	171.8	166.3	-5.5	-3.2%	17.4	11.7%
Health Care and Social Assistance	298.4	299.6	303.6	4.0	1.3%	5.2	1.7%
Information, Culture and Recreation	73.0	70.0	69.2	-0.8	-1.1%	-3.8	-5.2%
Accommodation and Food Services	113.1	119.1	118.6	-0.5	-0.4%	5.5	4.9%
Other Services	100.3	91.0	98.7	7.7	8.5%	-1.6	-1.6%
Public Administration	102.5	108.8	106.9	-1.9	-1.7%	4.4	4.3%

## CANADA

**Table: 14-10-0287-01 (282-0087) Labour force survey estimates (LFS), by sex and age group, seasonally adjusted, monthly (persons unless otherwise noted)**

	November 2020	October 2021	November 2021	# Change October 2021 - November 2021	% Change October 2021 - November 2021	# Change November 2020 - November 2021	% Change November 2020 - November 2021
Population (x 1,000)	31,161.3	31,430.0	31,466.5	36.5	0.1%	305.2	1.0%
Labour force (x 1,000)	20,279.9	20,528.0	20,560.0	32.0	0.16%	280.1	1.4%
Employment (x 1,000)	18,537.5	19,162.4	19,316.1	153.7	0.802%	778.6	4.2%
Employment full-time (x 1,000)	15,077.0	15,601.0	15,680.9	79.9	0.5%	603.9	4.0%
Employment part-time (x 1,000)	3,460.5	3,561.4	3,635.2	73.8	2.1%	174.7	5.0%
Unemployment (x 1,000)	1,742.5	1,365.6	1,243.8	-121.8	-8.9%	-498.7	-28.6%
Unemployment rate (rate)	8.6%	6.7%	6.0%	-0.7%		-2.6%	
Participation rate (rate)	65.1%	65.3%	65.3%	0.0%		0.2%	
Employment rate (rate)	59.5%	61.0%	61.4%	0.4%		1.9%	

## CANADA

**Table: 14-10-0355-01 (282-0088) Labour force survey estimates (LFS), employment by North American Industry Classification System (NAICS), seasonally adjusted, monthly (persons x 1,000)**

	November 2020	October 2021	November 2021	# Change October 2021 - November 2021	% Change October 2021 - November 2021	# Change November 2020 - November 2021	% Change November 2020 - November 2021
Total Employed - All Industries	18,537.5	19,162.4	19,316.1	153.7	0.8%	778.6	4.2%
Goods-Producing Sector	3,872.9	3,857.0	3,883.4	26.4	0.7%	10.5	0.3%
Agriculture	281.5	241.9	239.2	-2.7	-1.1%	-42.3	-15.0%
Forestry, Fishing, Mining, Quarrying, Oil and Gas	319.7	322.6	319.8	-2.8	-0.9%	0.1	0.0%
Utilities	139.0	141.6	137.8	-3.8	-2.7%	-1.2	-0.9%
Construction	1,399.6	1,425.9	1,426.7	0.8	0.1%	27.1	1.9%
Manufacturing	1,733.1	1,725.0	1,759.9	34.9	2.0%	26.8	1.5%
Services-Producing Sector	14,664.5	15,305.5	15,432.7	127.2	0.8%	768.2	5.2%
Wholesale and retail trade	2,796.1	2,919.9	2,948.2	28.3	1.0%	152.1	5.4%
Transportation and Warehousing	961.0	1,004.9	1,023.1	18.2	1.8%	62.1	6.5%
Finance, Insurance, Real Estate and Leasing	1,268.5	1,323.0	1,328.7	5.7	0.4%	60.2	4.7%
Professional, Scientific and Technical Services	1,589.1	1,699.3	1,727.6	28.3	1.7%	138.5	8.7%
Business, Building and Other Support Services	711.9	699.6	707.0	7.4	1.1%	-4.9	-0.7%
Educational Services	1,409.6	1,471.9	1,458.8	-13.1	-0.9%	49.2	3.5%
Health Care and Social Assistance	2,483.0	2,565.4	2,609.2	43.8	1.7%	126.2	5.1%
Information, Culture and Recreation	696.7	777.1	787.4	10.3	1.3%	90.7	13.0%
Accommodation and Food Services	968.3	1,014.0	1,019.2	5.2	0.5%	50.9	5.3%
Other Services	768.7	732.1	716.1	-16.0	-2.2%	-52.6	-6.8%
Public Administration	1,011.7	1,098.0	1,107.5	9.5	0.9%	95.8	9.5%

## Unemployment Rates for Key Markets

	November 2020	October 2021	November 2021
<b>Calgary</b>	10.9%	8.0%	8.1%
<b>Alberta</b>	11.1%	7.6%	7.6%
<b>Canada</b>	8.6%	6.7%	6.0%
<b>Montreal</b>	8.6%	6.4%	5.8%
<b>Ottawa</b>	7.2%	5.1%	4.4%
<b>Toronto</b>	10.7%	5.1%	4.4%
<b>Edmonton</b>	11.5%	8.0%	7.6%
<b>Vancouver</b>	8.1%	6.2%	5.9%
<b>Winnipeg</b>	8.2%	6.1%	5.7%
<b>Regina</b>	5.4%	6.1%	5.5%
<b>Saskatoon</b>	8.0%	7.1%	6.4%
<b>Wood Buffalo</b>			



# Facts & Figures

**Highest Unemployment Rate during 2008-2010 downturn:** 7.5% in January 2010

**Highest Unemployment Rate during 1992-1996 downturn:** 10.8% in July 1993  
Number of additional jobs we would need to lose to reach this level: 24,045  
(or amount labour force would need to grow by with no additional new jobs)

**Highest Unemployment Rate during 1982-1985 downturn:** 13.2% in March 1983  
Number of additional jobs we would need to lose to reach this level: 45,811  
(or amount labour force would need to grow by with no additional new jobs)

## **The last time Calgary had negative employment growth:**

Between November 2009 and May 2010 Calgary lost 12,900 jobs.

Between November 2008 and July 2009 Calgary lost 27,000 jobs.

From peak employment in November 2008 to the lowest level reached in May 2010 - 33,400 jobs were lost in Calgary.

Calgary lost a small number of jobs July-August 2012 (2,400), again in March 2013 (3,200), and again (3,300) in February to April 2014.

## **Calgary**

<b>Number of jobs gained/lost in 2014:</b>	11,300
<b>Number of jobs gained/lost in 2015:</b>	(16,200)
<b>Number of jobs gained/lost December 2014 to June 2016:</b>	(23,100)
<b>Number of jobs gained/lost in 2016:</b>	12,700
<b>Number of jobs gained/lost in 2017:</b>	14,400
<b>Number of jobs gained/lost in 2018:</b>	8,800
<b>Number of jobs gained/lost in 2019:</b>	14,400
<b>Number of jobs gained/lost in 2020:</b>	(5,600)
<b>Number of jobs gained/lost in 2021 (to-date):</b>	11,900

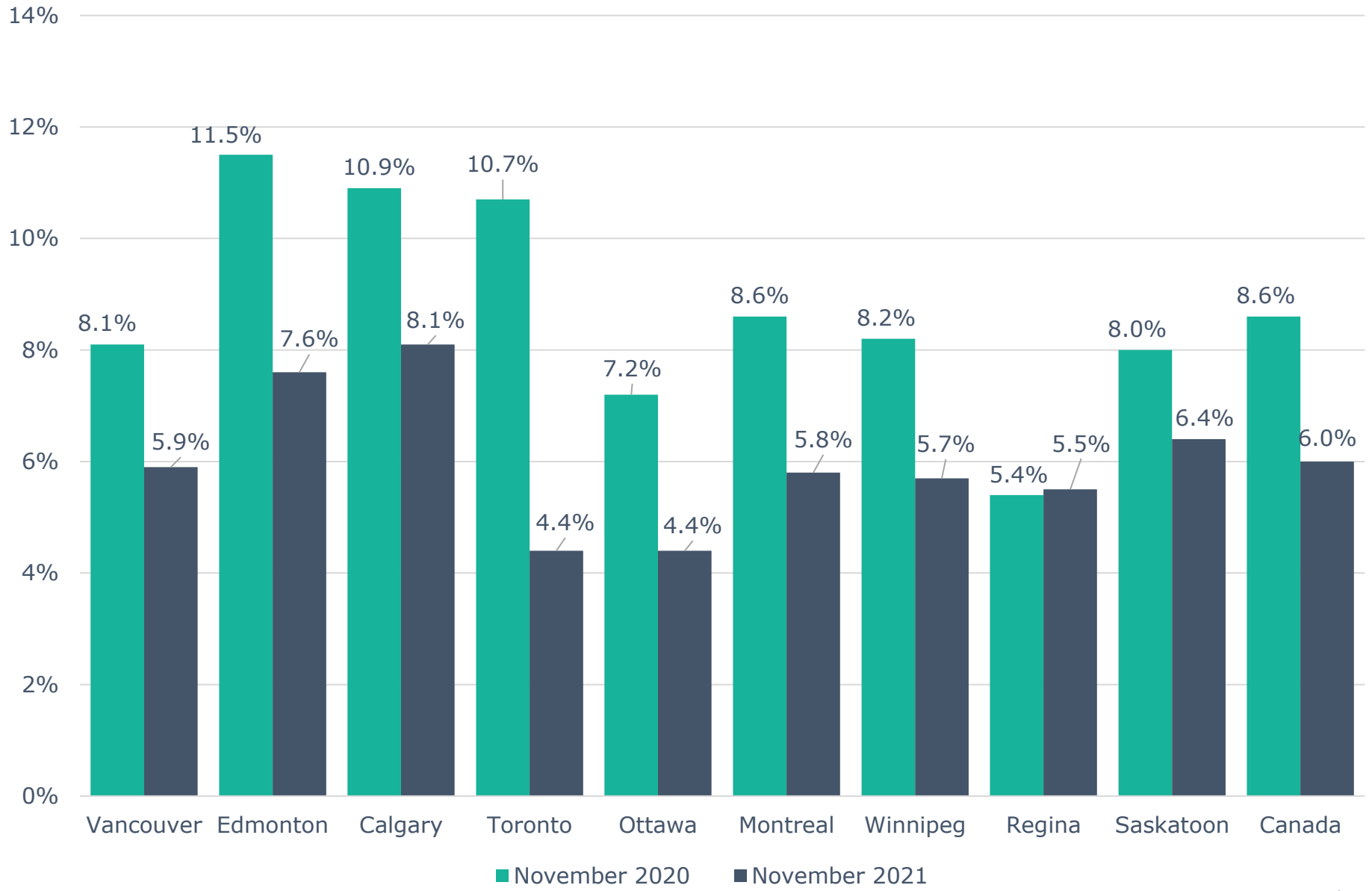
## **Alberta**

<b>Number of jobs gained/lost in 2014:</b>	46,000
<b>Number of jobs gained/lost in 2015:</b>	(40,100)
<b>Number of jobs gained/lost December 2014 to June 2016:</b>	(73,800)
<b>Number of jobs gained/lost in 2016:</b>	(21,500)
<b>Number of jobs gained/lost in 2017:</b>	57,300
<b>Number of jobs gained/lost in 2018:</b>	21,000
<b>Number of jobs gained/lost in 2019:</b>	1,500
<b>Number of jobs gained/lost in 2020:</b>	(109,900)
<b>Number of jobs gained/lost in 2021 (to-date):</b>	118,700

Source: Calgary - Table 14-10-0294-02 (282-0135); Alberta - 14-10-0287-01 (282-0087); Statistics Canada

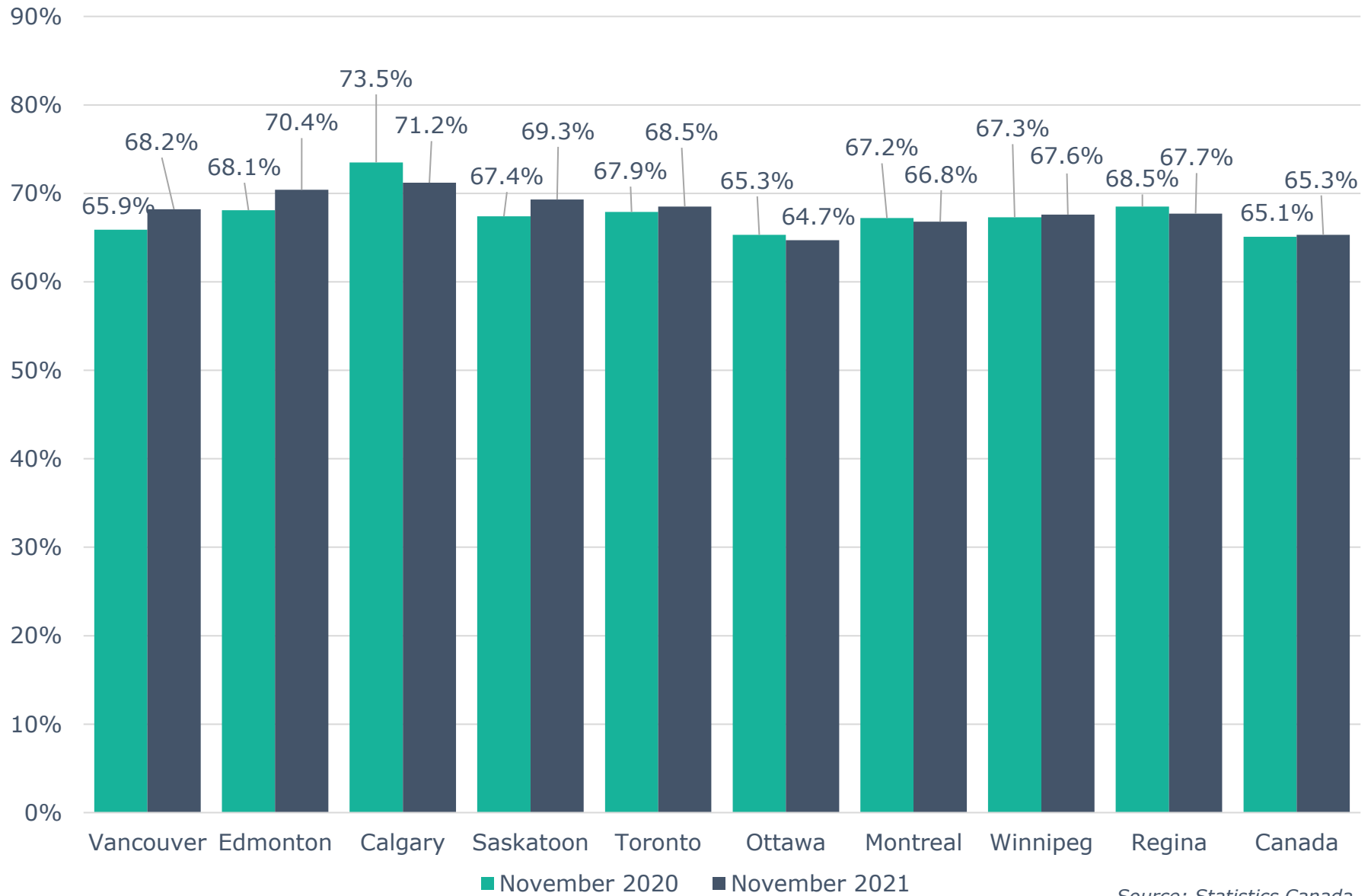
Note: Labour Force Survey, Employment, Seasonally Adjusted

# Unemployment Rate Across Canada



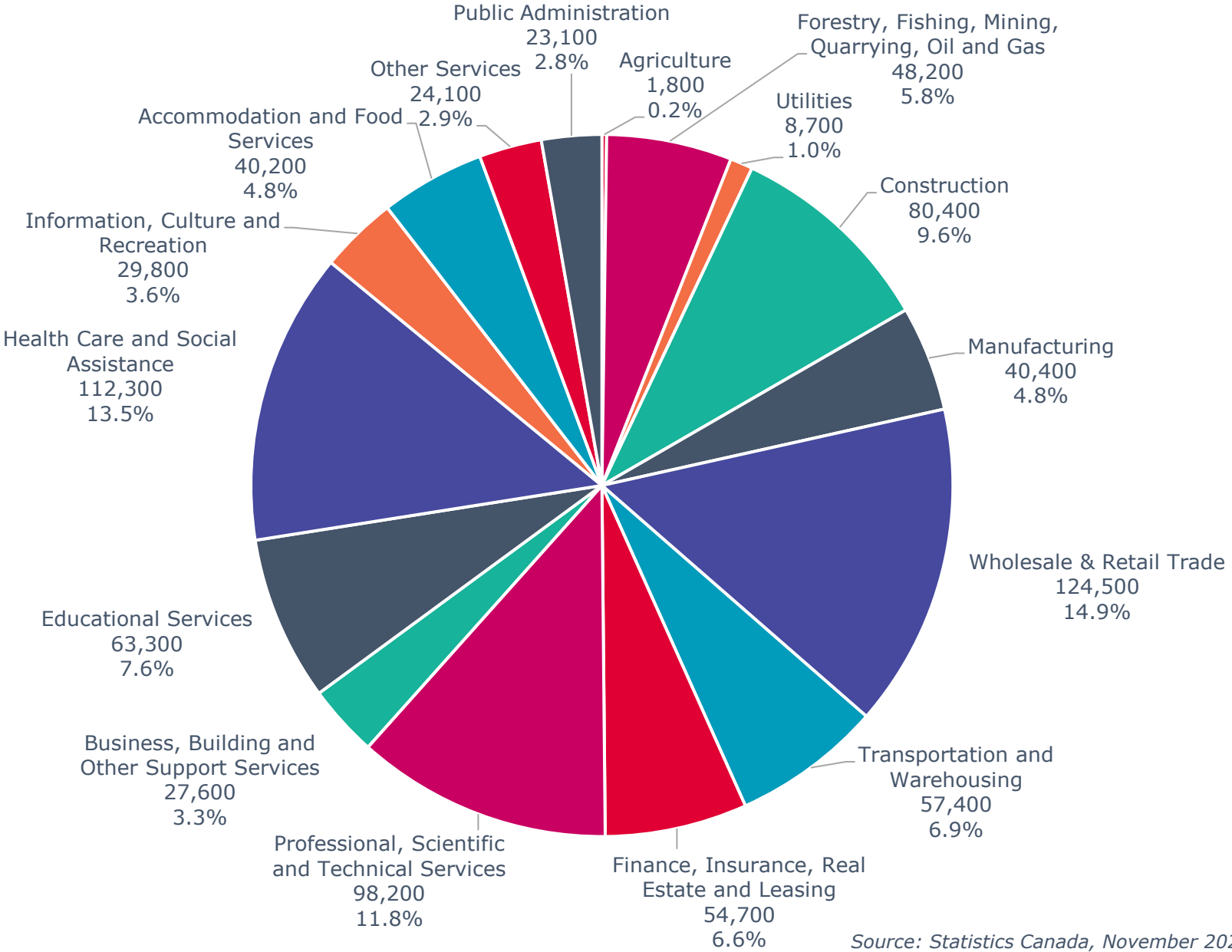
Source: Statistics Canada

# Labour Force Participation Rate Across Canada



Source: Statistics Canada

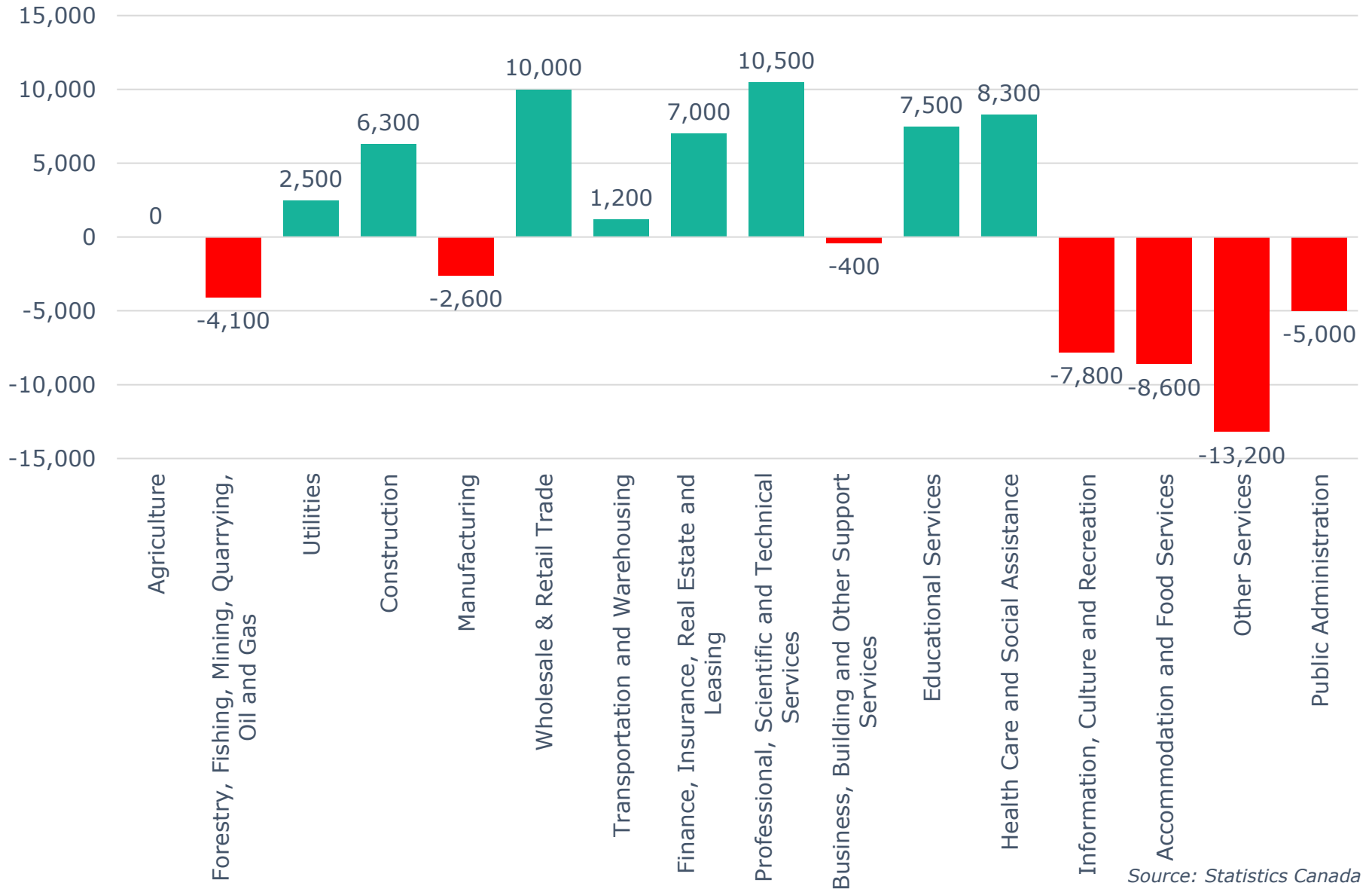
# Calgary CMA Employment by Industry (834,800)



Source: Statistics Canada, November 2021

# Calgary CMA 12-Month Net Jobs Gained or Lost by Industry

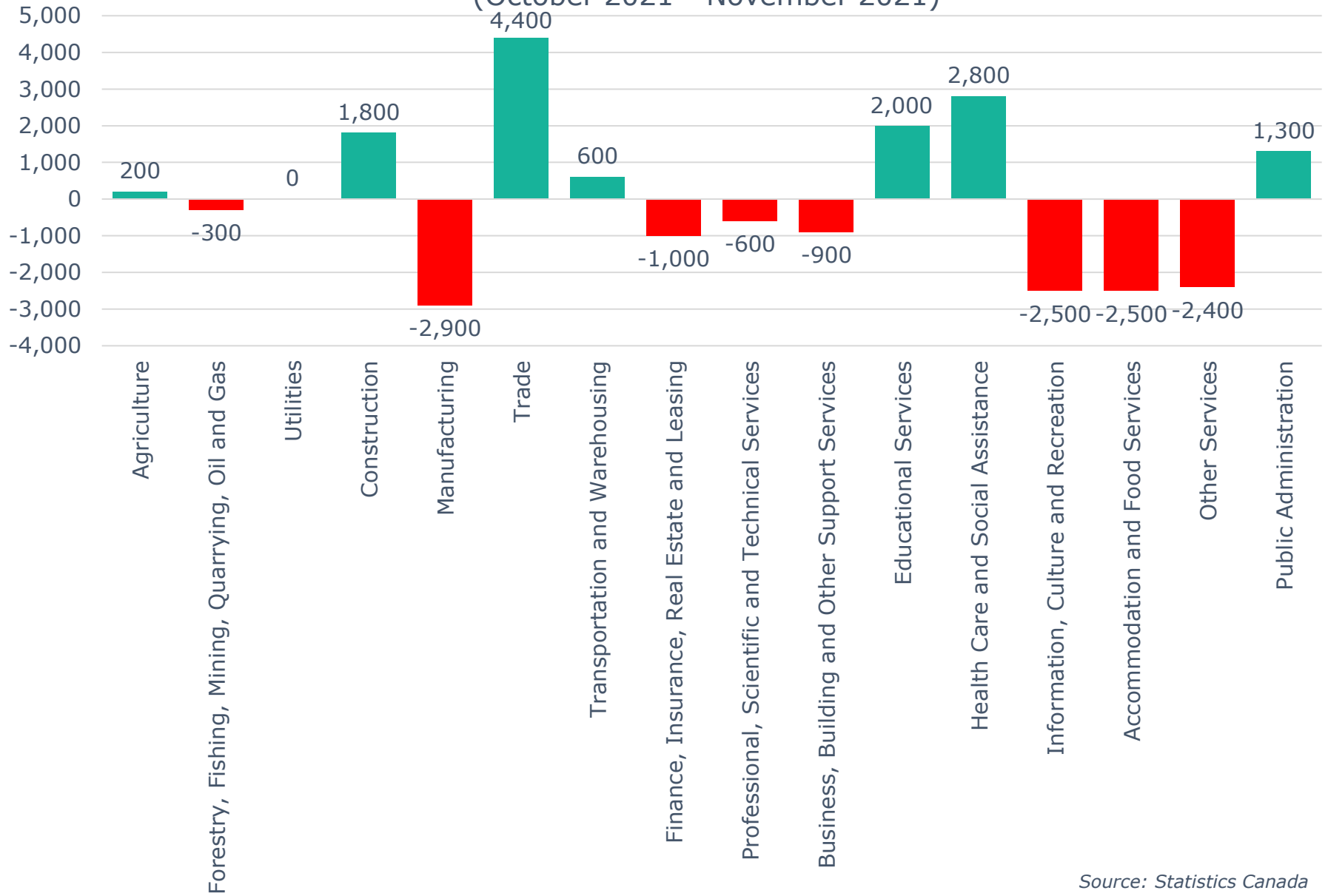
(November 2021)



Source: Statistics Canada

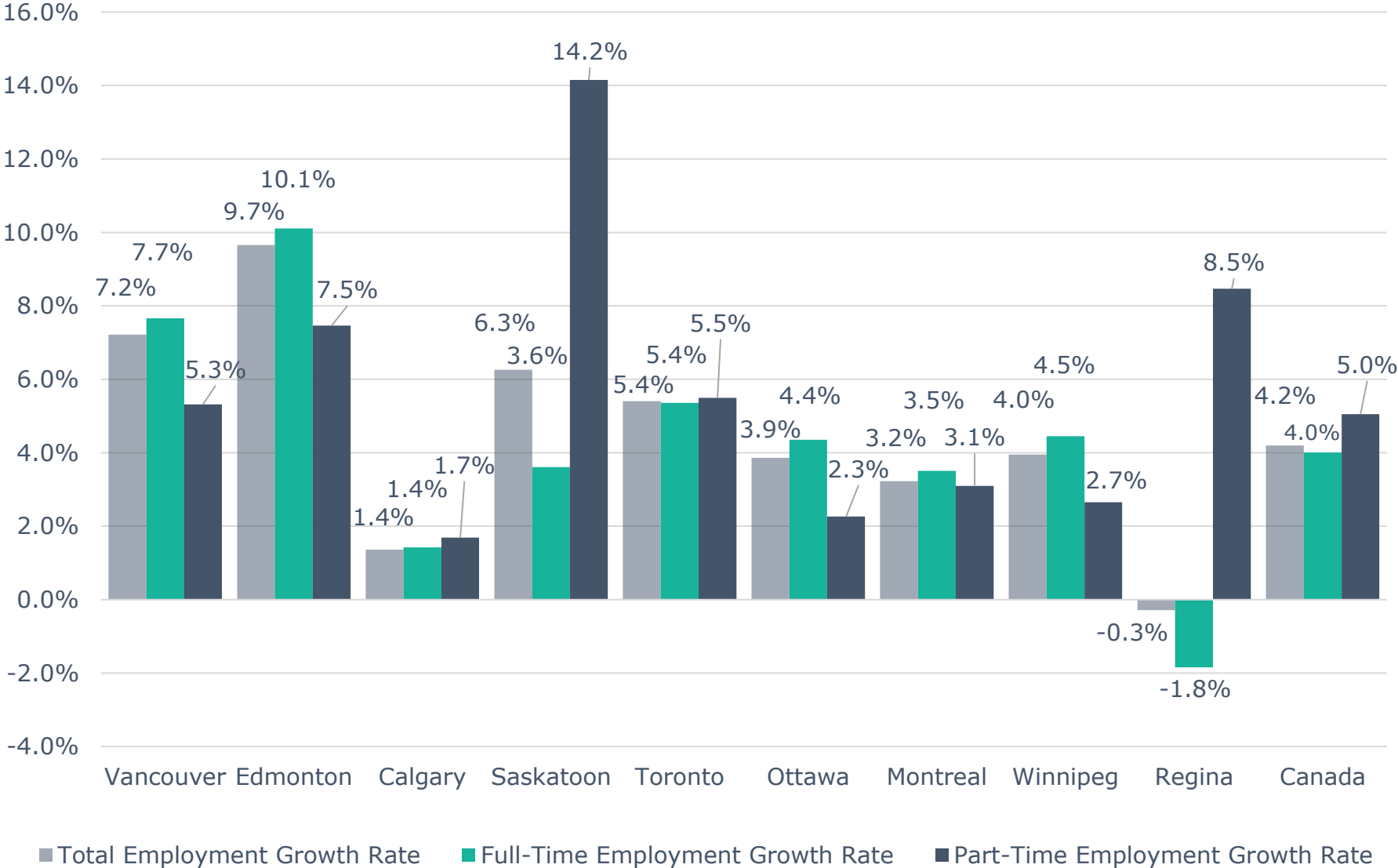
# Calgary CMA Monthly Net Jobs Gained or Lost by Industry

(October 2021 - November 2021)



Source: Statistics Canada

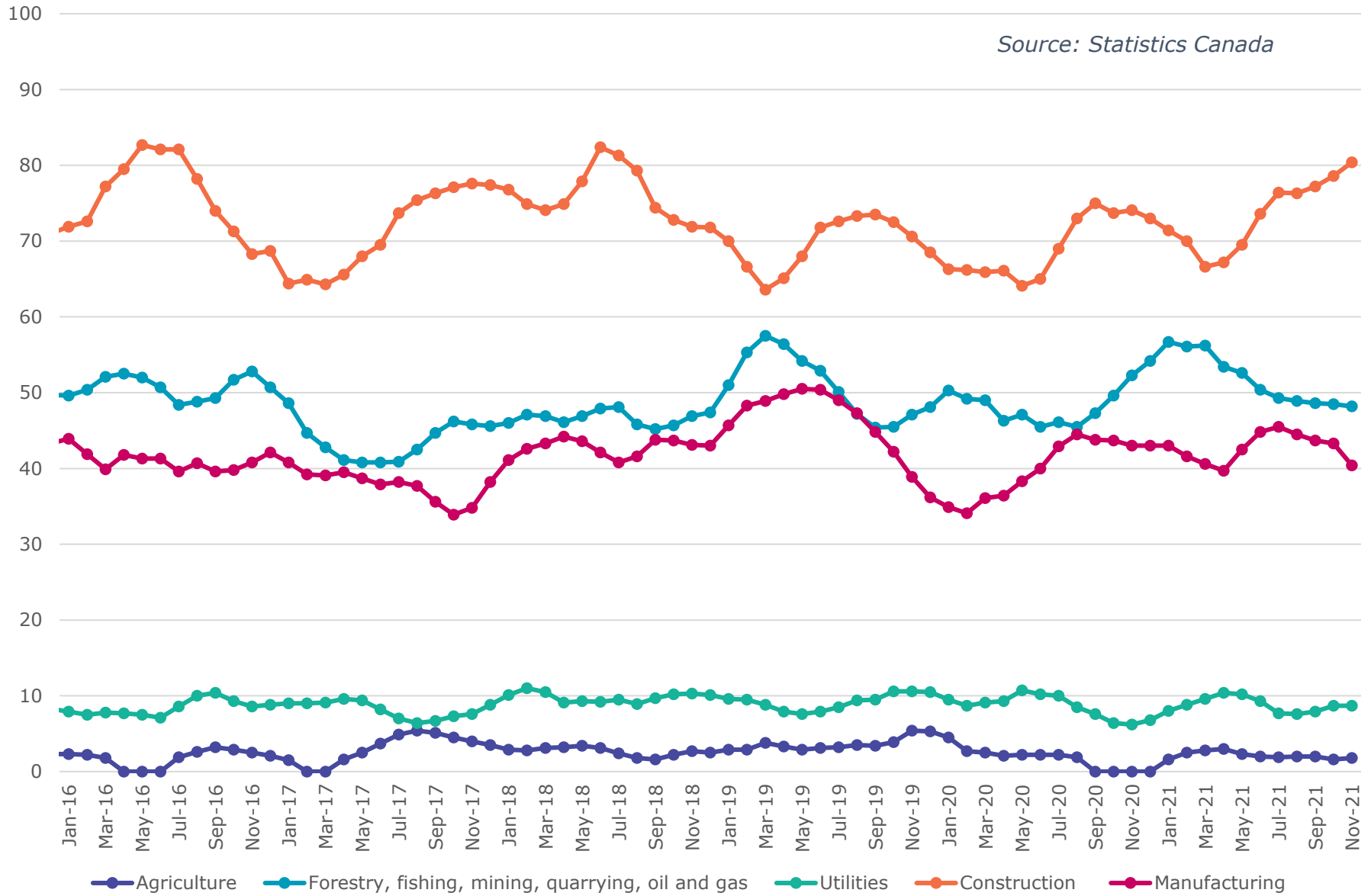
# Annual Employment Growth



Source: Statistics Canada, November 2020 - November 2021

# Calgary CMA Goods Producing Sectors - Number of Employees (In thousands)

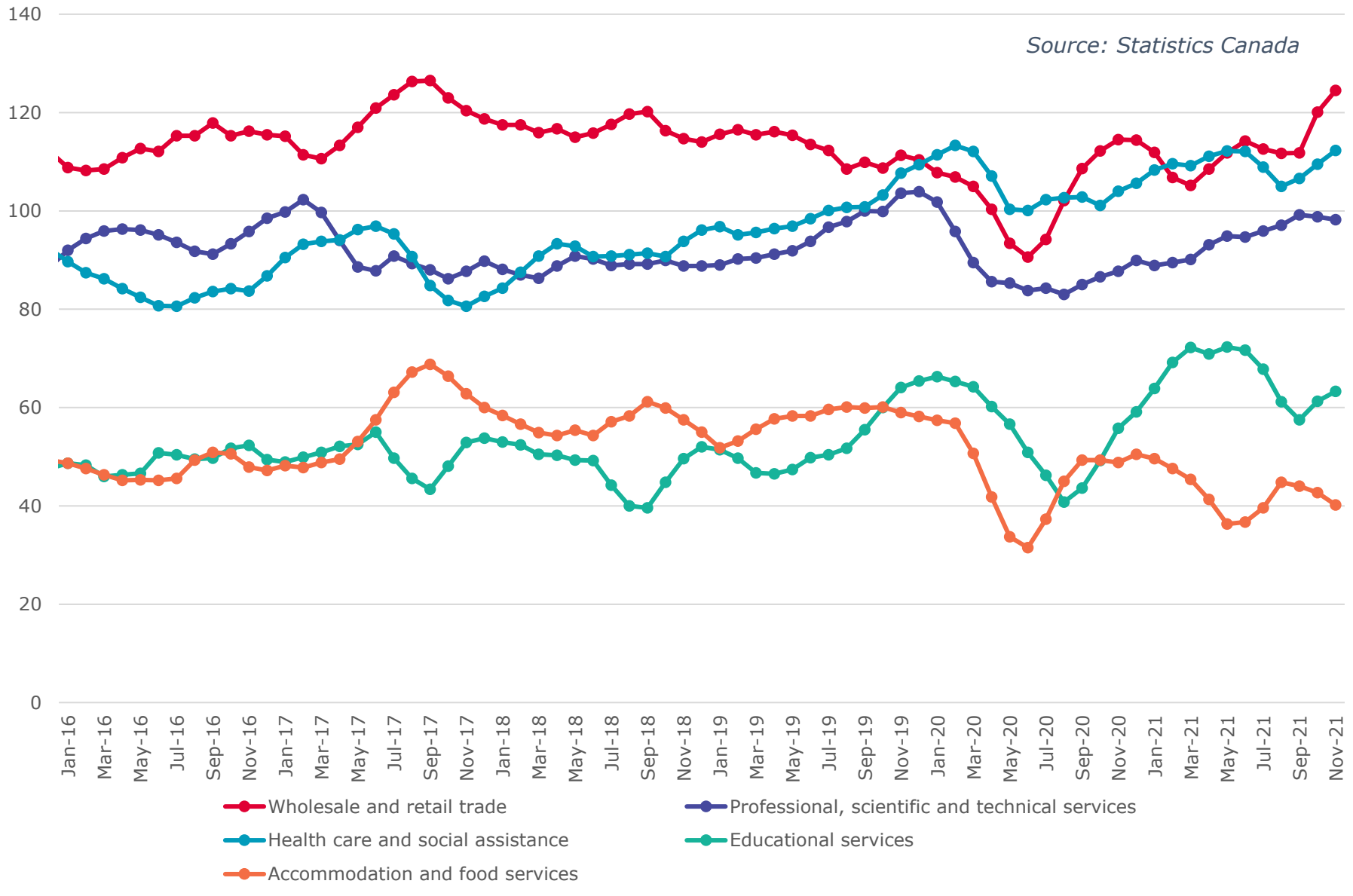
Source: Statistics Canada





## Calgary CMA Largest 5 Services Sector by Number of Employees (In thousands)

*Source: Statistics Canada*



### Calgary CMA Smallest 6 Service Sectors by Number of Employees (In thousands)

